

INTERUTTORI A PUNTALE

SWITCH WITH SOCKET CONNECTOR

CODICE FAMIGLIA
FAMILY CODE

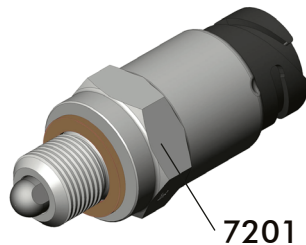
311-001

DIN 72585

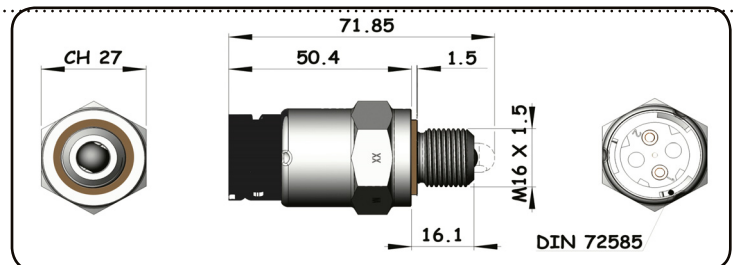
- Interruttore meccanico a puntale da utilizzarsi unicamente con carico max. sui contatti:
 - 5A lampada a 12V / 3A a 24V
oppure con carico minimo sui contatti:
 - 50 / 150 mA carico resistivo 12V / 24V.
- Interruttore NON idoneo per impiego in ambiente con pressione.
- Tenuta lato connettore DIN 72585: IP64K e IPX9K secondo NORMA DIN 40050 pat. 9 e NORMA CEI EN 60529.
- Mechanical push button switch only to be used with max load on contacts:
 - 5A bulb at 12V / 3A at 24V
or with minimum load on the contacts:
 - 50 / 150 mA resistive load 12V / 24V.
- Switch NOT suitable for use in pressurised environments.
- Socket connector DIN 72585: IP64K and IPX9K in accordance with DIN 40050 pat.9 and CEI EN 60529 standards.

CODICE / Order code
311-001-00125

CONTATTO / Contact
Normalmente chiuso
Normally closed

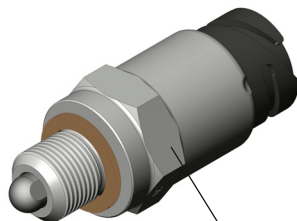


7201

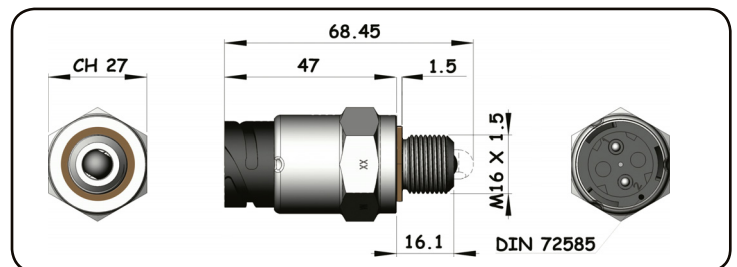


CODICE / Order code
311-001-00134

CONTATTO / Contact
Normalmente aperto
Normally open



7200

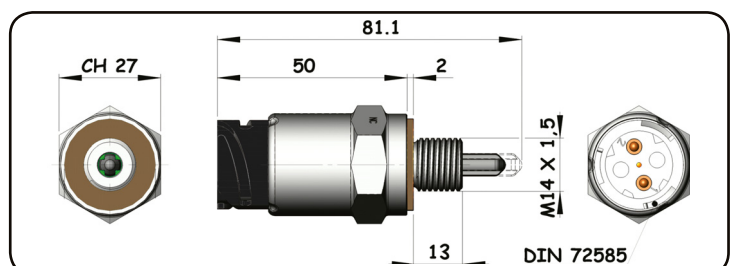


CODICE / Order code
311-001-00170

CONTATTO / Contact
Normalmente chiuso
Normally closed

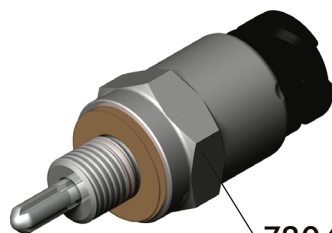


7206

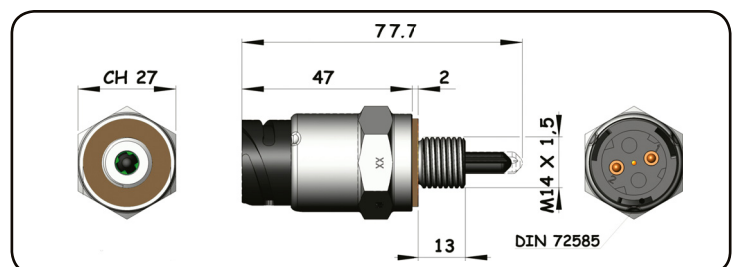


CODICE / Order code
311-001-00189

CONTATTO / Contact
Normalmente aperto
Normally open



7204



pag.1

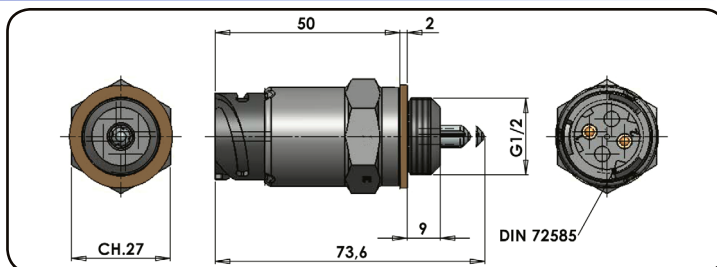
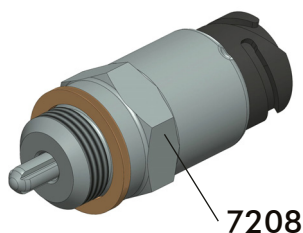
OMFB
HYDRAULIC COMPONENTS

O.M.F.B. S.p.A. Hydraulic Components
We reserve the right to make any changes without notice.
Edition 2013.11 No reproduction, however partial, is permitted.
Via Cave, 7/9 25050 Provaglio d'Iseo (Brescia) Italy Tel.: +39.030.9830611
Fax: +39.030.9839207-208 Internet:www.omfb.it e-mail:info@omfb.it

COMPANY WITH
QUALITY SYSTEM
CERTIFIED BY DNV GL
= ISO 9001 =

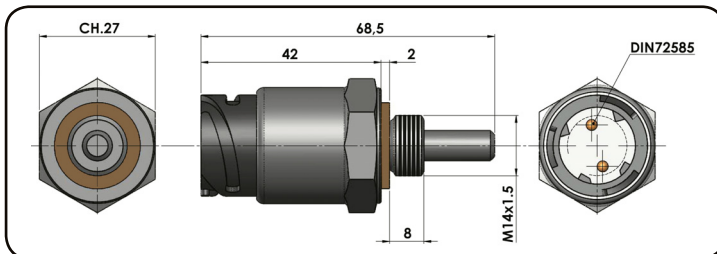
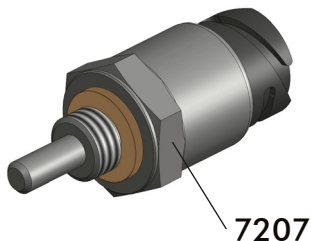
CODICE / Order code
311-001-00198

CONTATTO / Contact
Normalmente chiuso
Normally closed



CODICE / Order code
311-001-00205

CONTATTO / Contact
Normalmente aperto
Normally open



PACKARD

- Interruttore meccanico a puntale da utilizzarsi unicamente con carico max. sui contatti:

- 3W lampada
- Tensione 12V - 24V
- Temperatura di esercizio: -25°C +80°C

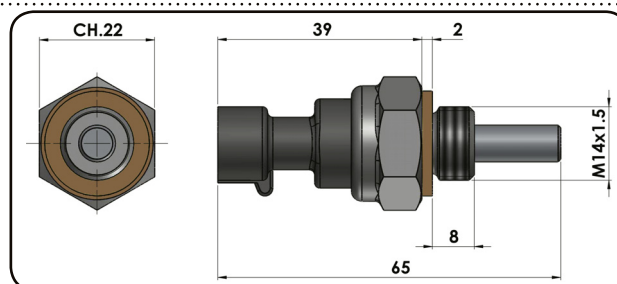
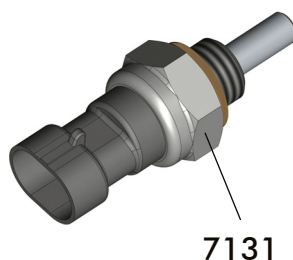
- Mechanical push button switch only to be used with max load on contacts:

- 3W bulb
- Voltage 12V - 24V
- Working temperature: -25°C +80°C

CODICE / Order code
311-001-00107

CONTATTO / Contact
Normalmente chiuso
Normally closed

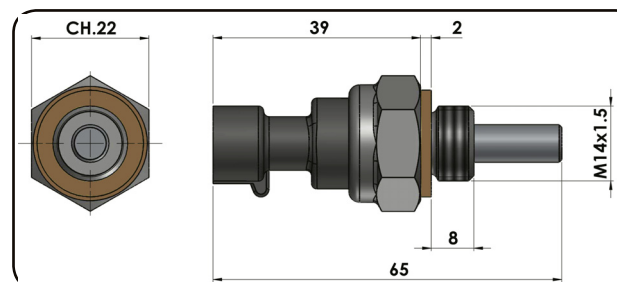
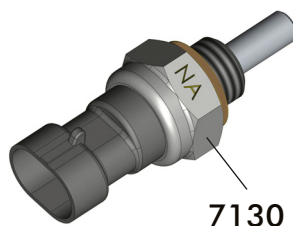
- Interruttore NON idoneo per impiego in ambiente con pressione.
- Switch NOT suitable for use in pressurised environments.



CODICE / Order code
311-001-00116

CONTATTO / Contact
Normalmente aperto
Normally open

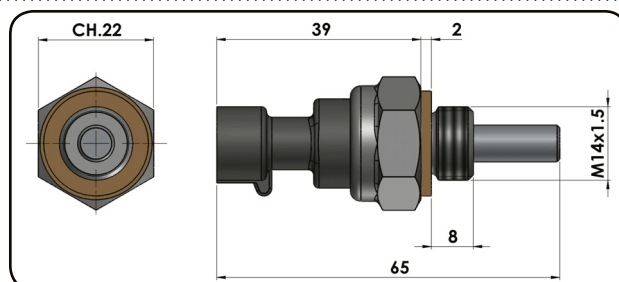
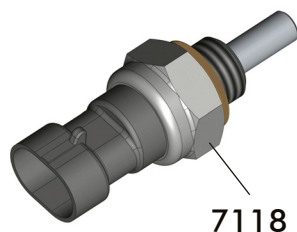
- Interruttore NON idoneo per impiego in ambiente con pressione.
- Switch NOT suitable for use in pressurised environments.



CODICE / Order code
311-001-00081

CONTATTO / Contact
Normalmente chiuso
Normally closed

ALTA PRESSIONE
HIGH PRESSURE
MAX. 12,5 bar



pag.2

COMPANY WITH
QUALITY SYSTEM
CERTIFIED BY DNV GL
= ISO 9001 =

O.M.F.B. S.p.A. Hydraulic Components
We reserve the right to make any changes without notice.
Edition 2013.11 No reproduction, however partial, is permitted.
Via Cave, 7/9 25050 Provaglio d'Iseo (Brescia) Italy Tel.: +39.030.9830611
Fax: +39.030.9839207-208 Internet:www.omfb.it e-mail:info@omfb.it

OMFB
HYDRAULIC COMPONENTS