

FHL (light) / Smooth PTFE

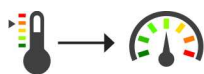


Composition: ·Inner tube: smooth tube in PTFE. Fine thickness. Resistant to fire, chemically inert. Suitable for food use according to FDA norm.
·Reinforcement: stainless steel AISI 304L braid.

Working temperature: From -70° C to +260° C.

Part n°	DN	Ø in	Ø out	Working Pressure (bar)	Working pressure (psi)	Burst pressure (bar)	Burst pressure (psi)	Bending radius (mm)	Weight (kg/m)
M290003	1/8"	3,9	5,8	270	3916	1080	15664	25	0,055
M290005	3/16"	5,1	7,4	200	2900	800	11600	35	0,070
M290006	1/4"	6,35	9	175	2537	700	10150	45	0,090
M290008	5/16"	7,9	10,8	150	2175	600	8700	50	0,125
M290009	3/8"	9,5	12,4	135	1957	540	7830	55	0,145
M290013	1/2"	12,7	15,7	120	1740	480	6960	70	0,215
M290016	5/8"	15,9	19,1	100	1450	400	5800	130	0,265
M290020	3/4"	19	22,2	90	1305	360	5220	190	0,320
M290025	1"	25,4	29,3	65	942	260	3770	270	0,460

Temperature: 20° C / Tolerance SAE 100 R14



50°C	100%
100°C	90%
150°C	80%
200°C	70%
260°C	60%