

POMPE AD INGRANAGGI FISSAGGIO 3 FORI-UNI 3 HOLES-UNI HYDRAULIC GEAR PUMPS

CODICE FAMIGLIA
FAMILY CODE

105-067

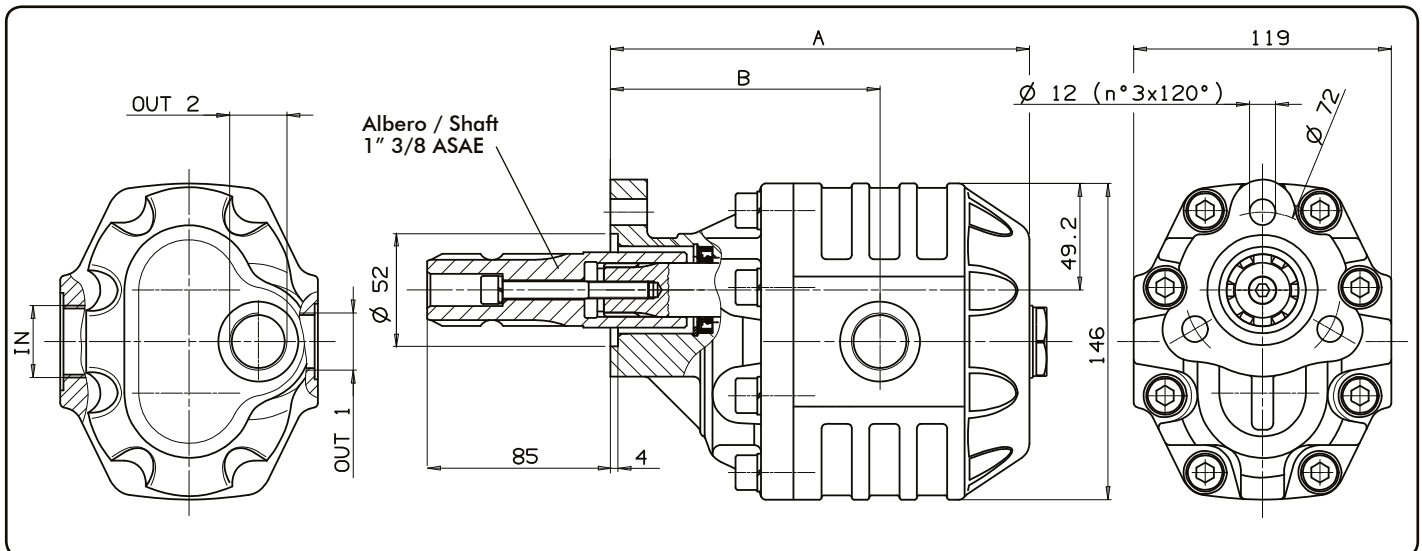
NPH
UNI-F/ALBERO-SHAFT ASAE

Codice fascicolo:997-400-10515



Fluido idraulico <i>Fluid</i>	Minerale o sintetico compatibile con guarnizioni: <i>Mineral or synthetic compatible with the following seals:</i> NBR, FKM, FPM, Nylon				
Viscosità cinematica consigliata <i>Kinematic viscosity suggested</i>	T media ambiente (°C) <i>Average ambient temp. (°C)</i>	< -10	-10 ÷ 10	10 ÷ 35	> 35
	VG (cSt = mm ² /s)	22	32	46	68
Viscosità cinematica ottimale di esercizio <i>Optimale kinematic viscosity</i>			VG= 10 cSt ÷ 100 cSt		
Viscosità cinematica max consentita all'avviamento <i>Max kinematic viscosity suggested at the start-up</i>			VG= 750 cSt		
Indice di viscosità consigliato <i>Viscosity index suggested</i>		VI > 100	Temperatura di esercizio <i>Working temperature</i>		
			-15°C +100°C		
Grado di filtrazione <i>Oil filtering</i>			> 200 bar: 10 µm < 200 bar: 25 µm		
Pressione di aspirazione <i>Inlet pressure</i>			-0,3 ÷ 2 bar		
Senso di rotazione <i>Pump rotation</i>			Unidirezionale (DX o SX) <i>Unidirectional (Right or Left)</i>		

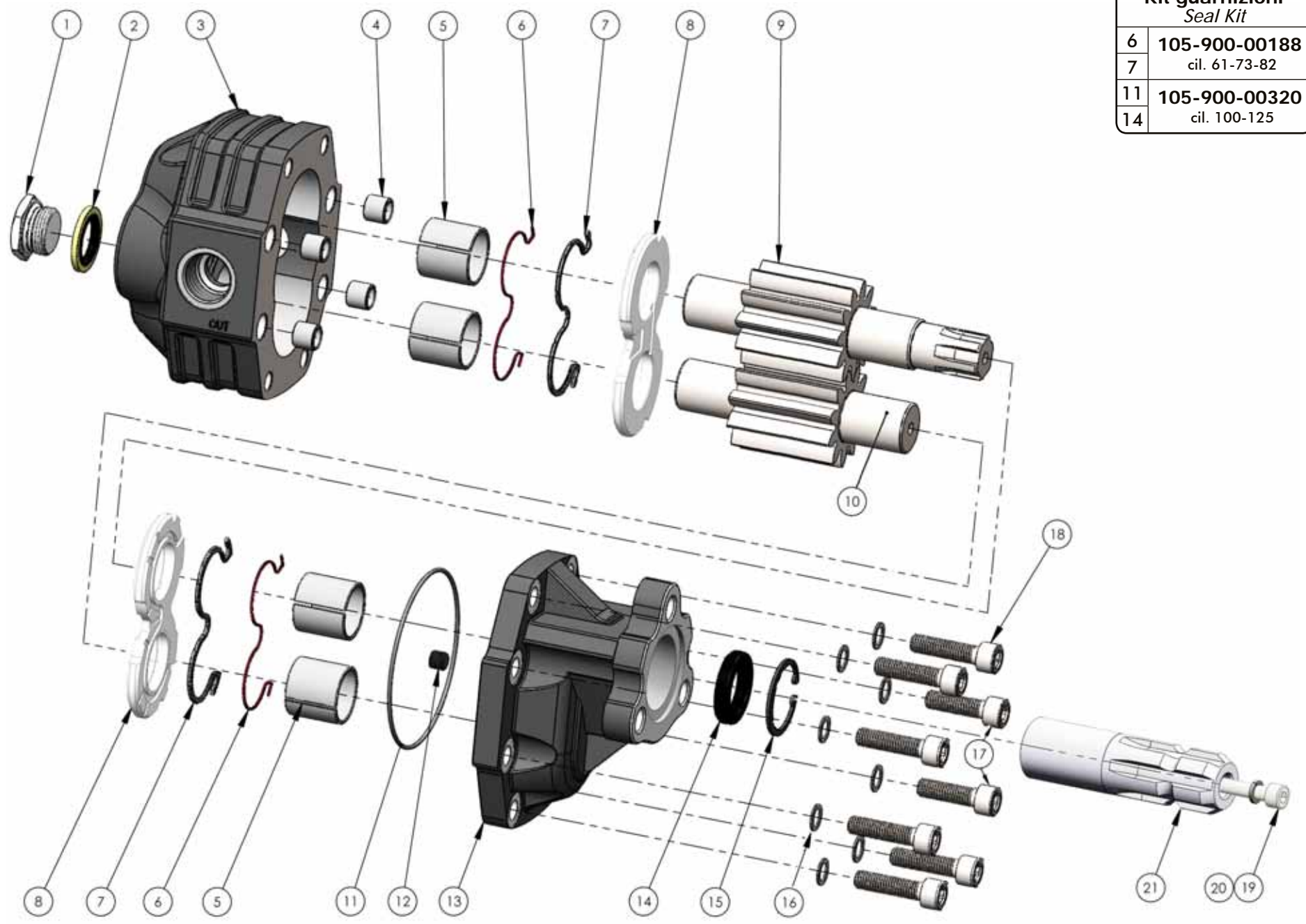
Data: Mercoledì 28 gennaio 2015



Codice foglio:997-105-06701 Rev: AA

Tipo pompa <i>Pump type</i>	Rotazione <i>Rotation</i>		IN	OUT 1	OUT 2	A	B	Peso <i>Weight</i>
	Destra <i>Right</i>	Sinistra <i>Left</i>						
NPH-34	105-067-00348	105-067-00357	G 3/4	ISO 228	ISO 228	mm	mm	Kg
NPH-43	105-067-00437	105-067-00446						
NPH-51	105-067-00517	105-067-00526	G 1	G 3/4	mm	mm	Kg	
NPH-61	105-067-00615	105-067-00624						
NPH-73	105-067-00731	105-067-00740						
NPH-82	105-067-00820	105-067-00839						
NPH-100	105-067-01007	105-067-01016	G 1-1/4	G 1	G 3/4	mm	mm	Kg
NPH-125	105-067-01258	105-067-01267						

Kit guarnizioni Seal Kit	
6	105-900-00188
7	cil. 61-73-82
11	105-900-00320
14	cil. 100-125



COMPANY WITH
QUALITY SYSTEM
CERTIFIED BY DNV GL
= ISO 9001:2015 =

O.M.F.B. Hydraulic Components
We reserve the right to make any changes without notice.
Edition 2003.02 No reproduction, however partial, is permitted.
Via Cava, 7/9 25050 Poggio di Iso (Brescia) Italy Tel.: +39 030 9830611
Fax: +39 030 9839207-208 Internet: www.omfb.it e-mail: info@omfb.it

pag. 28





O.M.F.B. Hydraulic Components
 We reserve the right to make any changes without notice.
 Edition 2003.02 No reproduction, however partial, is permitted.
 Via Cave - 719 25050 Poggio di Iseo (Brescia) Italy Tel.: +39 030 9830611
 Fax: +39 030 9839207-208 Internet: www.omfb.it e-mail: info@omfb.it

pag. 29

COMPANY WITH
 QUALITY SYSTEM
 CERTIFIED BY DNV GL
 = ISO 9001:2015 =

N°	34	43	51	61	73	82	100	125	Codice/P. Number	Descrizione / Description		Q
1	•	•	•	•	•	•	•	•	540-002-00129	Tappo Acciaio 3/4"	Steel plug 3/4"	1
2	•	•	•	•	•	•	•	•	116-009-10343	Rondella acciaio-gomma 3/4"	Steel-rubber washer 3/4"	1
3									517-010-00342	Corpo pompa	Gear housing	1
									517-010-00431			
									517-010-00511			
									517-010-00619			
									517-010-00717			
									517-010-00824			
									517-010-00995			
517-010-01252												
4	•	•	•	•	•	•	•	•	501-003-00282	Spine forate di centraggio 14x12.5	Pins 14x12.5	4
5	•	•	•	•	•	•	•	•	533-004-00033	Boccola autolub. 28x32x30	Bushing 28x32x30	4
									533-004-00060	Boccola autolub. 30x34x35	Bushing 30x34x35	
6	•	•	•	•	•	•	•	•	506-000-01097	Guarnizione antiestrusione	Back-up ring	2
									506-000-01284			
7	•	•	•	•	•	•	•	•	506-000-01088	Guarnizione per rasamento	Thrust plate seal	2
									506-000-01275			
8	•	•	•	•	•	•	•	•	510-010-00293	Rasamento ad occhiale	Thrust plate	2
									510-010-00346			
9									523-042-00341	Albero dentato conduttore	Drive shaft	1
									523-042-00430			
									523-042-00510			
									523-042-00618			
									523-042-00716			
									523-042-00823			
									523-042-01000			
523-042-01251												
10									523-021-00346	Albero dentato condotto	Driven shaft	1
									523-021-00435			
									523-021-00515			
									523-021-00613			
									523-021-00711			
									523-021-00828			
									523-023-01012			
									523-023-01263			
11	•	•	•	•	•	•	•	•	506-000-01579	Guarnizione OR (2x95)	O-ring (2x95)	1
12	•	•	•	•	•	•	•	•	504-010-00063	Grano conico 1/8"	Plug 1/8"	1
13	•	•	•	•	•	•	•	•	518-003-00063	Coperchio anteriore	Mounting cover	1
									518-003-00072			
14	•	•	•	•	•	•	•	•	506-024-25401	Guarnizione paraolio	Oil seal	1
15	•	•	•	•	•	•	•	•	501-001-00373	Anello elastico	Circlip	1
16	•	•	•	•	•	•	•	•	501-020-00101	Rondella elastica	Washer	8
17						•			502-004-00565	Vite TCE M10x35 UNI 5931	Screw M10x35 UNI 5931	2
18									502-004-00574	Vite TCE M10x40 UNI 5931	Screw M10x40 UNI 5931	8
									6			
									8			
19	•	•	•	•	•	•	•	•	502-003-00655	Vite TCE M8x70 UNI 5931	Screw M8x70 UNI 5931	1
20	•	•	•	•	•	•	•	•	501-008-00045	Rondella elastica x M8 DIN 7980	Washer x M8 DIN 7980	1
21	•	•	•	•	•	•	•	•	114-005-00487	Manicotto M.1-3/8"ASAE F. 21x25 UNI	Hub M.1-3/8"ASAE F. 21x25 UNI	1

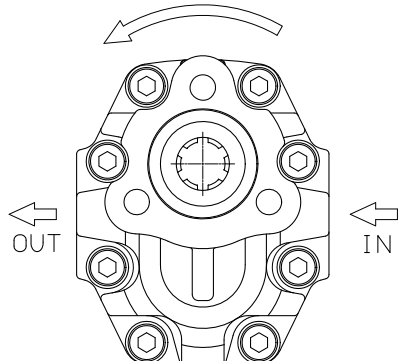
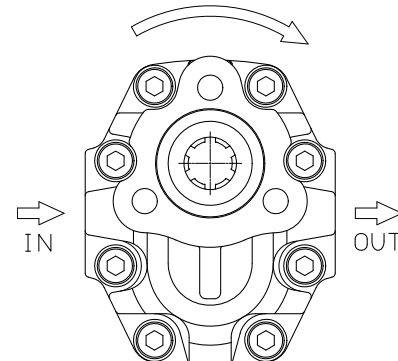
CARATTERISTICHE TECNICHE DI FUNZIONAMENTO / TECHNICAL FEATURES

Tipo pompa <i>Pump type</i>	Cilindrata <i>Displacement</i>	Pressione <i>Pressure</i>			Velocità max. continua <i>Max. continuous speed</i>	Velocità max. intermittente <i>Max. intermittent speed</i>	Velocità min. <i>Min. speed</i>
		P1	P2	P3			
	cm ³ /rev	bar	bar	bar	rpm	rpm	rpm
NPH-34	33.88	280	300	310	2200	2800	300
NPH-43	43.12	270	290	300	2000	2500	
NPH-51	50.82	240	260	280			
NPH-61	60.06	220	240	250	1800	2000	
NPH-73	72.88	200	220	230	1600	1800	
NPH-82	81.08	190	210	220			
NPH-100	98.18	180	200	220	1500		
NPH-125	122.72	160	180	200			

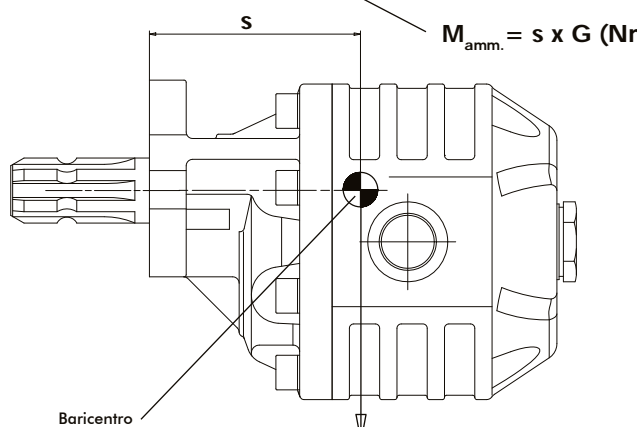
P1 = Pressione max. continua (100%)
 P2 = Pressione max. intermittente (20 sec. max.)
 P3 = Pressione max. di punta (6 sec. max.)

Max. continuous pressure
Max. Intermittent pressure
Max. peak pressure

SENSO DI ROTAZIONE POMPA - DIRECTION OF ROTATION:

<p>Rotazione antioraria, pompa sinistra <i>Anti-clockwise rotation, left pump</i></p>  <p>Vista FRONTALE FRONT</p>	<p>Rotazione oraria, pompa destra <i>Clockwise rotation, right pump</i></p>  <p>Vista FRONTALE FRONT</p>
---	--

MOMENTO PESO / MASS MOMENT



$M_{amm} = s \times G \text{ (Nm)}$

Baricentro
Center of mass

$G = \text{Peso in N (Peso in Kg} \times 9.81)$
 $G = \text{Weight in N (Weight in Kg} \times 9.81)$

Tipo pompa - <i>Pump type</i>	S
NPH-34	99
NPH-43	101
NPH-51	103
NPH-61	106
NPH-73	110
NPH-82	113
NPH-100	122
NPH-125	130

PER MODIFICARE IL SENSO DI ROTAZIONE VEDERE ISTRUZ. 997-2-42
TO CHANGE THE DIRECTION OF ROTATION SEE INSTRUCTION 997-2-42