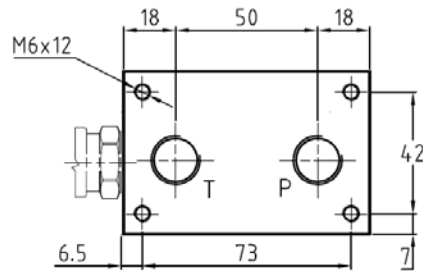
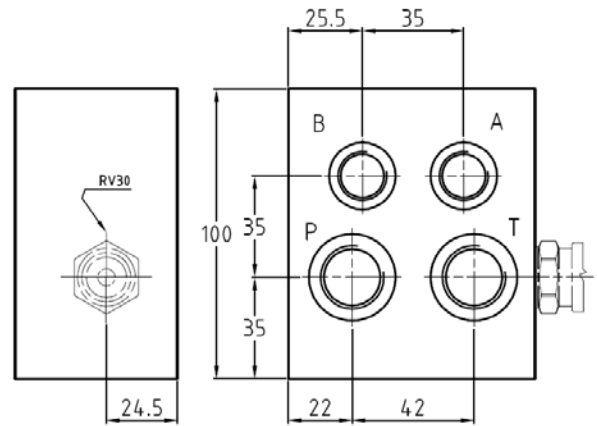
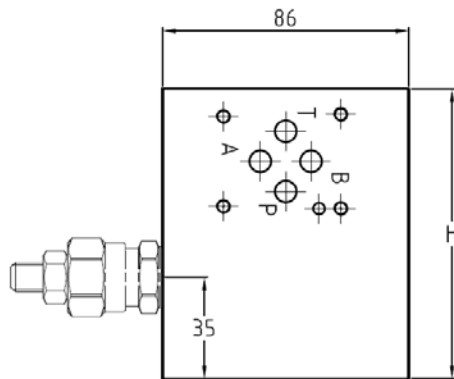
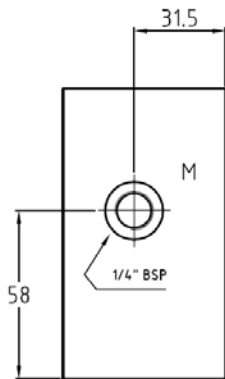
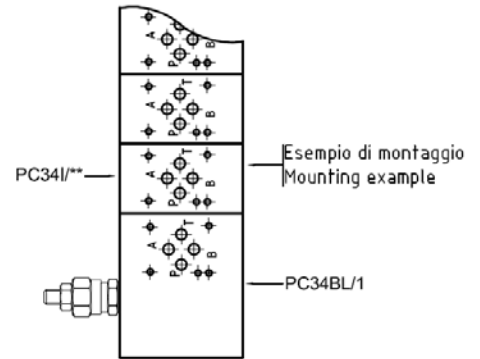
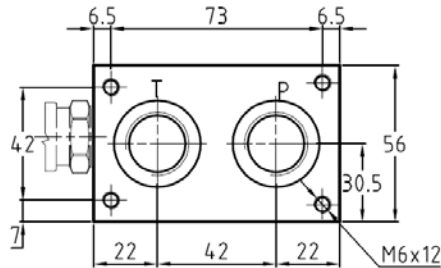


PC34BL Packing plate Cetop 03

Basic element 4 tie-rods with 1 or more pos. Cetop 03

N° Stat.	H	Kg
1	100	3
2	150	5
3	200	7
4	250	9



Esempio di ordinazione - ordering code

PC3 4 BL / 1 2 B

Piastra componibile Cetop 03
Packing plate Cetop 03

N° 4 tiranti
N° 4 tie-rods

Piastra di base
Basic element

1-2-3-4 numero di posizioni
1-2-3-4 number position

A=30-100 bar B=50-210 bar C=100-350 bar

1 = pred. per valvola di max. RV 30
1 = prearranged for relief valve RV 30
2 = con valvola di max. RV 30
2 = with relief valve RV 30