

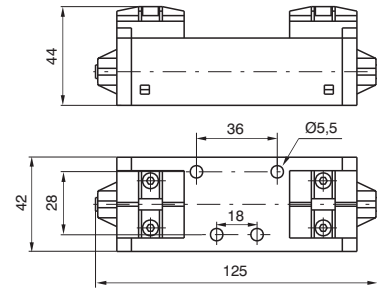
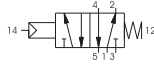
Pneumatic - Spring - 5/2

Ordering code

1011.52.1.9



Weight gr. 230
Minimum operating pressure 2,5 bar



Operational characteristic

Fluid	Max working pressure (bar)	Temperature °C	Flow rate at 6 bar with Δp=1 (NI/min)
Filtered and lubricated air	10	-5 - +50	900

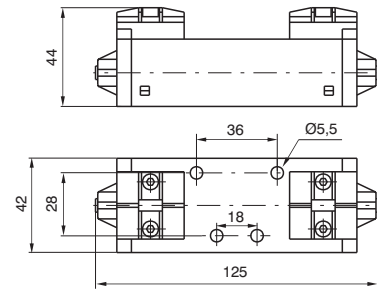
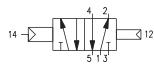
Pneumatic - Differential - 5/2

Ordering code

1011.52.1.6



Weight gr. 240
Minimum operating pressure 2 bar



Operational characteristic

Fluid	Max working pressure (bar)	Temperature °C	Flow rate at 6 bar with Δp=1 (NI/min)
Filtered and lubricated air	10	-5 - +50	900

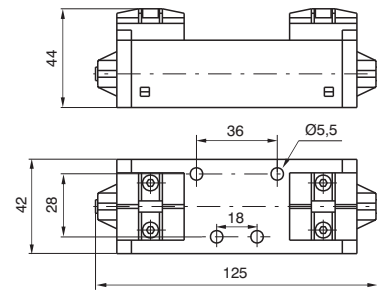
Pneumatic - Pneumatic - 5/2

Ordering code

1011.52.1.8



Weight gr. 240
Minimum operating pressure 1,5 bar



Operational characteristic

Fluid	Max working pressure (bar)	Temperature °C	Flow rate at 6 bar with Δp=1 (NI/min)
Filtered and lubricated air	10	-5 - +50	900

Pneumatic - Pneumatic - 5/3

Ordering code

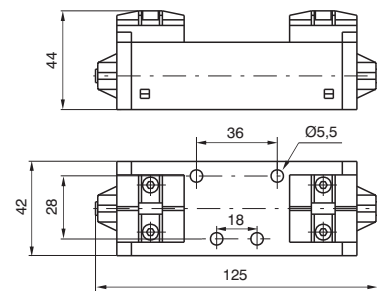
1011.53.F.1.8

FUNCTION

- 31 = Closed centres
- 32 = Open centres
- 33 = Pressured centres



Weight gr. 240
Minimum operating pressure 3 bar



Operational characteristic

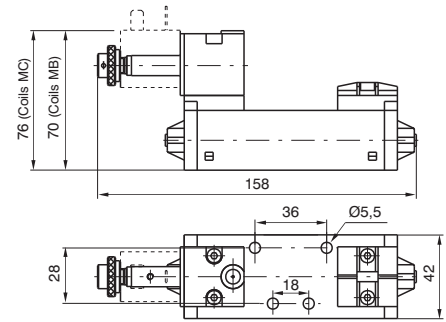
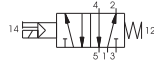
Fluid	Max working pressure (bar)	Temperature °C	Flow rate at 6 bar with Δp=1 (NI/min)
Filtered and lubricated air	10	-5 - +50	900



Solenoid - Spring - 5/2

Ordering code
1011.52.3.9.M
M MECHANICAL CODE
See Valves Series 300 CNOMO

Weight gr. 290
Minimum operating pressure 2,5 bar

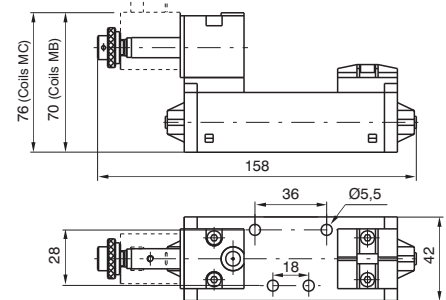


Operational characteristic	Fluid	Max working pressure (bar)	Temperature °C	Flow rate at 6 bar with Δp=1 (Nl/min)
	Filtered and lubricated air	10	-5 - +50	900

Solenoid - Differential - 5/2

Ordering code
1011.52.3.6.M
M MECHANICAL CODE
See Valves Series 300 CNOMO

Weight gr. 290
Minimum operating pressure 2 bar

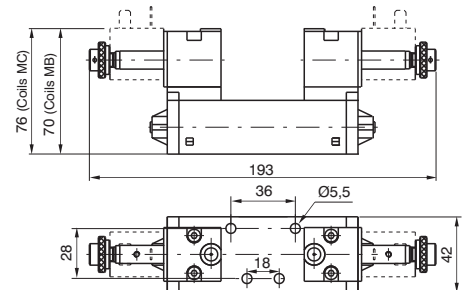
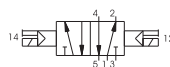


Operational characteristic	Fluid	Max working pressure (bar)	Temperature °C	Flow rate at 6 bar with Δp=1 (Nl/min)
	Filtered and lubricated air	10	-5 - +50	900

Solenoid - Solenoid - 5/2

Ordering code
1011.52.3.5.M
M MECHANICAL CODE
See Valves Series 300 CNOMO

Weight gr. 350
Minimum operating pressure 1,5 bar

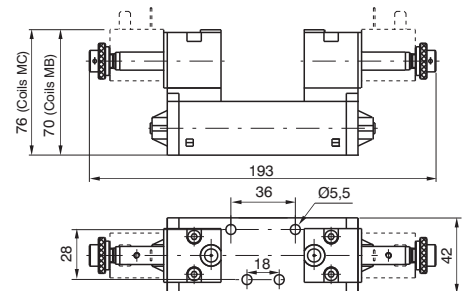


Operational characteristic	Fluid	Max working pressure (bar)	Temperature °C	Flow rate at 6 bar with Δp=1 (Nl/min)
	Filtered and lubricated air	10	-5 - +50	900

Solenoid - Solenoid - 5/3

Ordering code
1011.53.F.3.5.M
F FUNCTION
31 = Closed centres
32 = Open centres
33 = Pressured centres
M MECHANICAL CODE
See Valves Series 300 CNOMO

Weight gr. 350
Minimum operating pressure 3 bar



Operational characteristic	Fluid	Max working pressure (bar)	Temperature °C	Flow rate at 6 bar with Δp=1 (Nl/min)
	Filtered and lubricated air	10	-5 - +50	900

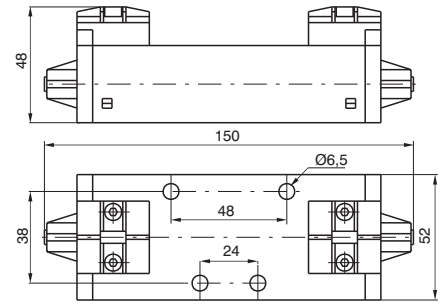
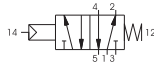
2

Pneumatic - Spring - 5/2

Ordering code
1012.52.1.9



Weight gr. 300
Minimum operating pressure 2,5 bar



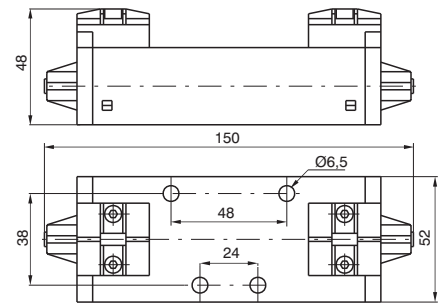
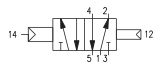
Operational characteristic	Fluid	Max working pressure (bar)	Temperature °C	Flow rate at 6 bar with Δp=1 (NI/min)
	Filtered and lubricated air	10	-5 - +50	1600

Pneumatic - Differential - 5/2

Ordering code
1012.52.1.6



Weight gr. 310
Minimum operating pressure 2 bar



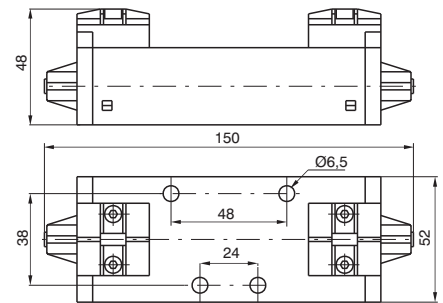
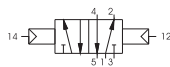
Operational characteristic	Fluid	Max working pressure (bar)	Temperature °C	Flow rate at 6 bar with Δp=1 (NI/min)
	Filtered and lubricated air	10	-5 - +50	1600

Pneumatic - Pneumatic - 5/2

Ordering code
1012.52.1.8



Weight gr. 310
Minimum operating pressure 1,5 bar



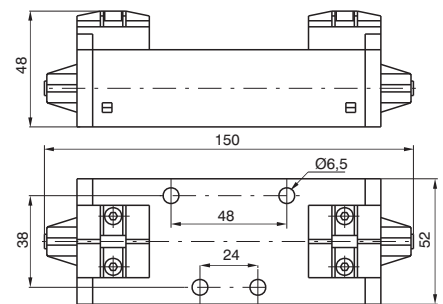
Operational characteristic	Fluid	Max working pressure (bar)	Temperature °C	Flow rate at 6 bar with Δp=1 (NI/min)
	Filtered and lubricated air	10	-5 - +50	1600

Pneumatic - Pneumatic - 5/3

Ordering code
1012.53.F.1.8
FUNCTION
F 31=Closed centres
32=Open centres
33=Pressured centres



Weight gr. 310
Minimum operating pressure 3 bar



Operational characteristic	Fluid	Max working pressure (bar)	Temperature °C	Flow rate at 6 bar with Δp=1 (NI/min)
	Filtered and lubricated air	10	-5 - +50	1600

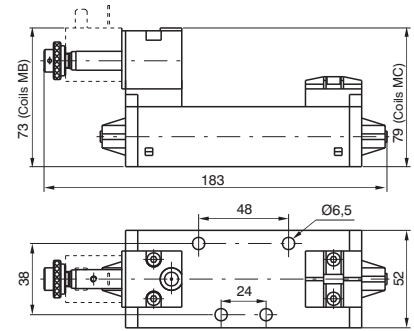
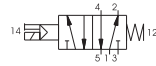


Solenoid - Spring - 5/2

Ordering code
1012.52.3.9.M
M MECHANICAL CODE See Valves Series 300 CNOMO



Weight gr. 360
Minimum operating pressure 2,5 bar



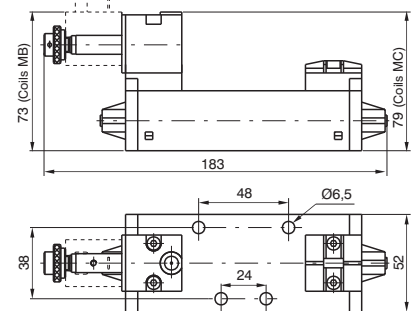
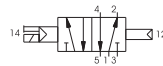
Operational characteristic	Fluid	Max working pressure (bar)	Temperature °C	Flow rate at 6 bar with $\Delta p=1$ (l/min)
	Filtered and lubricated air	10	-5 - +50	1600

Solenoid - Differential - 5/2

Ordering code
1012.52.3.6.M
M MECHANICAL CODE See Valves Series 300 CNOMO



Weight gr. 360
Minimum operating pressure 2 bar



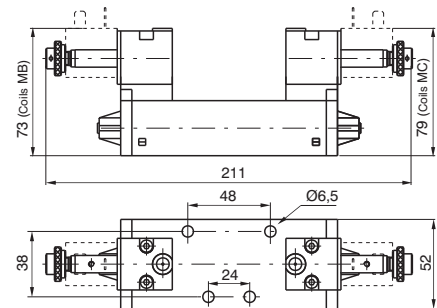
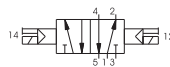
Operational characteristic	Fluid	Max working pressure (bar)	Temperature °C	Flow rate at 6 bar with $\Delta p=1$ (l/min)
	Filtered and lubricated air	10	-5 - +50	1600

Solenoid - Solenoid - 5/2

Ordering code
1012.52.3.5.M
M MECHANICAL CODE See Valves Series 300 CNOMO



Weight gr. 420
Minimum operating pressure 1,5 bar



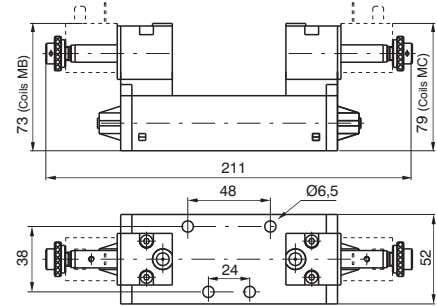
Operational characteristic	Fluid	Max working pressure (bar)	Temperature °C	Flow rate at 6 bar with $\Delta p=1$ (l/min)
	Filtered and lubricated air	10	-5 - +50	1600

Solenoid - Solenoid - 5/3

Ordering code
1012.53.F.3.5.M
F FUNCTION 31 = Closed centres 32 = Open centres 33 = Pressured centres
M MECHANICAL CODE See Valves Series 300 CNOMO



Weight gr. 420
Minimum operating pressure 3 bar



Operational characteristic	Fluid	Max working pressure (bar)	Temperature °C	Flow rate at 6 bar with $\Delta p=1$ (l/min)
	Filtered and lubricated air	10	-5 - +50	1600

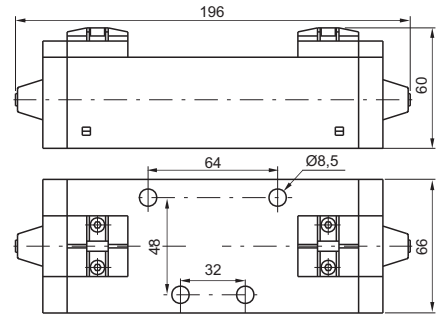
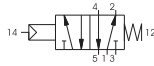
Pneumatic - Spring - 5/2

Ordering code

1013.52.1.9



Weight gr. 1000
Minimum operating pressure 2,5 bar



Operational characteristic

Fluid	Max working pressure (bar)	Temperature °C	Flow rate at 6 bar with Δp=1 (NI/min)
Filtered and lubricated air	10	-5 - +50	3600

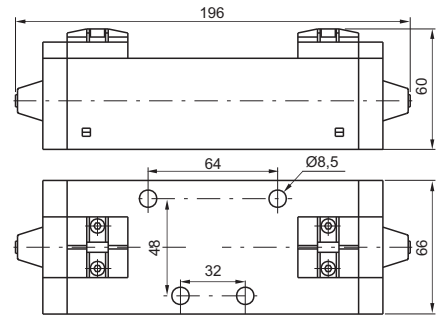
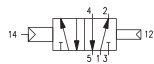
Pneumatic - Differential - 5/2

Ordering code

1013.52.1.6



Weight gr. 1020
Minimum operating pressure 2 bar



Operational characteristic

Fluid	Max working pressure (bar)	Temperature °C	Flow rate at 6 bar with Δp=1 (NI/min)
Filtered and lubricated air	10	-5 - +50	3600

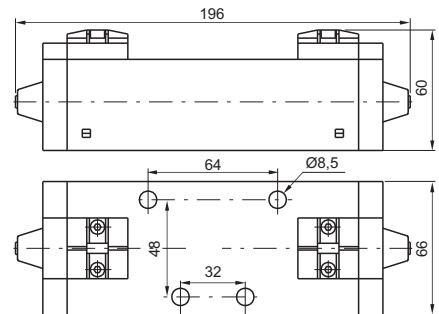
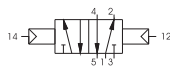
Pneumatic - Pneumatic - 5/2

Ordering code

1013.52.1.8



Weight gr. 1050
Minimum operating pressure 1,5 bar



Operational characteristic

Fluid	Max working pressure (bar)	Temperature °C	Flow rate at 6 bar with Δp=1 (NI/min)
Filtered and lubricated air	10	-5 - +50	3600

Pneumatic - Pneumatic - 5/3

Ordering code

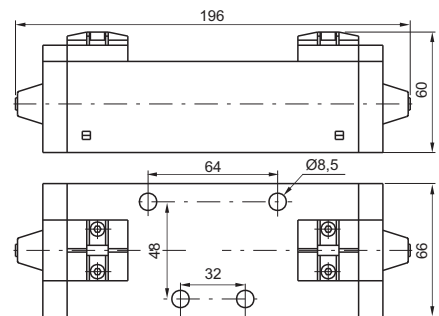
1013.53.F.1.8

FUNCTION

- 31=Closed centres
- 32=Open centres
- 33=Pressured centres



Weight gr. 1050
Minimum operating pressure 3 bar



Operational characteristic

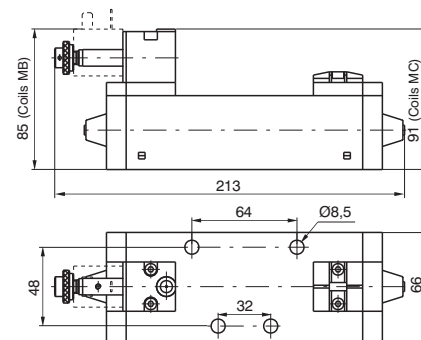
Fluid	Max working pressure (bar)	Temperature °C	Flow rate at 6 bar with Δp=1 (NI/min)
Filtered and lubricated air	10	-5 - +50	3000

Solenoid - Spring - 5/2

Ordering code
1013.52.3.9.M
M MECHANICAL CODE See Valves Series 300 CNOMO



Weight gr. 1060
Minimum operating pressure 2,5 bar



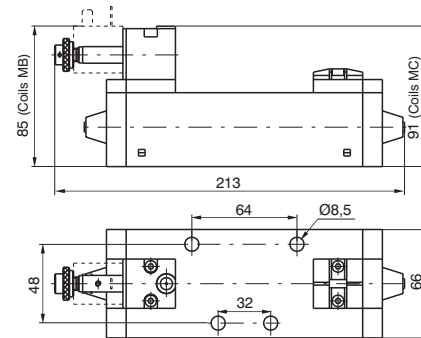
Operational characteristic	Fluid	Max working pressure (bar)	Temperature °C	Flow rate at 6 bar with $\Delta p=1$ (l/min)
	Filtered and lubricated air	10	-5 - +50	3600

Solenoid - Differential - 5/2

Ordering code
1013.52.3.6.M
M MECHANICAL CODE See Valves Series 300 CNOMO



Weight gr. 1080
Minimum operating pressure 2 bar



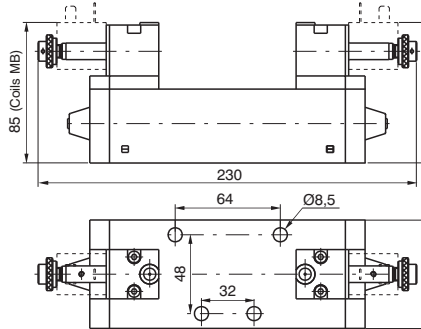
Operational characteristic	Fluid	Max working pressure (bar)	Temperature °C	Flow rate at 6 bar with $\Delta p=1$ (l/min)
	Filtered and lubricated air	10	-5 - +50	3600

Solenoid - Solenoid - 5/2

Ordering code
1013.52.3.5.M
M MECHANICAL CODE See Valves Series 300 CNOMO



Weight gr. 1170
Minimum operating pressure 1,5 bar



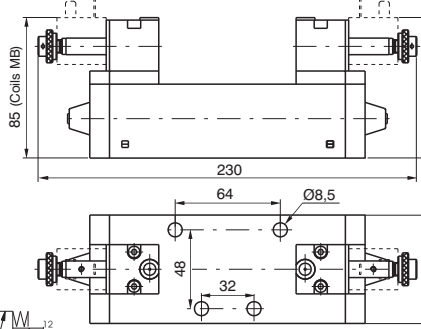
Operational characteristic	Fluid	Max working pressure (bar)	Temperature °C	Flow rate at 6 bar with $\Delta p=1$ (l/min)
	Filtered and lubricated air	10	-5 - +50	3600

Solenoid - Solenoid - 5/3

Ordering code
1013.53.F.3.5.M
F FUNCTION 31=Closed centres 32=Open centres 33=Pressured centres
M MECHANICAL CODE See Valves Series 300 CNOMO



Weight gr. 1170
Minimum operating pressure 3 bar



Operational characteristic	Fluid	Max working pressure (bar)	Temperature °C	Flow rate at 6 bar with $\Delta p=1$ (l/min)
	Filtered and lubricated air	10	-5 - +50	3000