

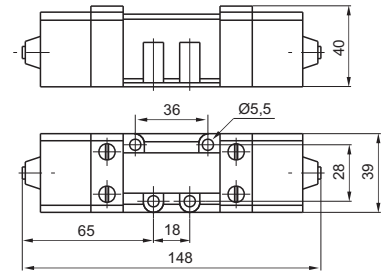
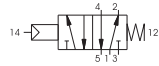


**Pneumatic - Spring - 5/2**

Ordering code
<b>1001.52.1.9</b>



Weight gr. 780  
Minimum operating pressure 2,5 bar



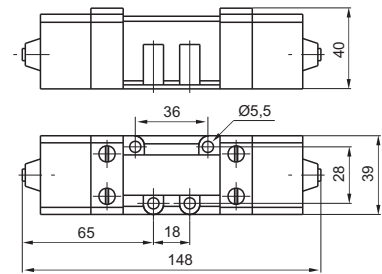
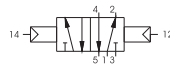
Operational characteristic	Fluid	Max working pressure (bar)	Temperature °C	Flow rate at 6 bar with Δp=1 (NI/min)
	Filtered and lubricated air	10	-5 - +70	840

**Pneumatic - Differential - 5/2**

Ordering code
<b>1001.52.1.6</b>



Weight gr. 790  
Minimum operating pressure 2 bar



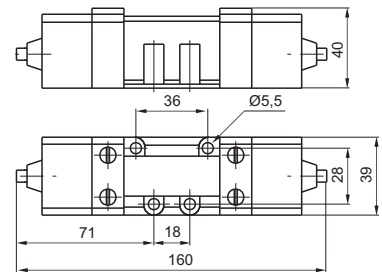
Operational characteristic	Fluid	Max working pressure (bar)	Temperature °C	Flow rate at 6 bar with Δp=1 (NI/min)
	Filtered and lubricated air	10	-5 - +70	840

**Pneumatic - Pneumatic - 5/2**

Ordering code
<b>1001.52.1.8</b>



Weight gr. 800  
Minimum operating pressure 1,5 bar



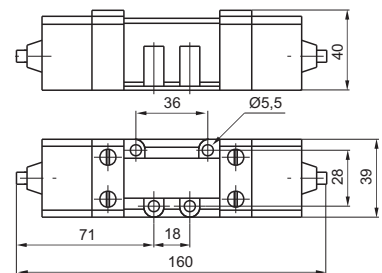
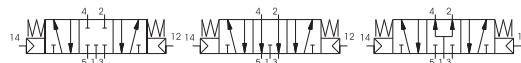
Operational characteristic	Fluid	Max working pressure (bar)	Temperature °C	Flow rate at 6 bar with Δp=1 (NI/min)
	Filtered and lubricated air	10	-5 - +70	840

**Pneumatic - Pneumatic - 5/3**

Ordering code
<b>1001.53.Ⓡ.1.8</b>
FUNCTION
Ⓡ 31=Closed centres
Ⓡ 32=Open centres
Ⓡ 33=Pressured centres



Weight gr. 800  
Minimum operating pressure 3 bar



Operational characteristic	Fluid	Max working pressure (bar)	Temperature °C	Flow rate at 6 bar with Δp=1 (NI/min)
	Filtered and lubricated air	10	-5 - +70	720

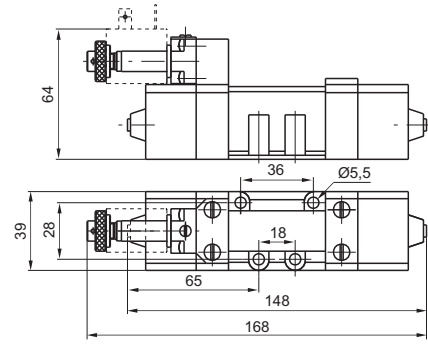
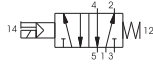
2

**Solenoid - Spring - 5/2**

Ordering code
<b>1051.52.3.9.M2</b>



Weight gr. 890  
Minimum operating pressure 2,5 bar



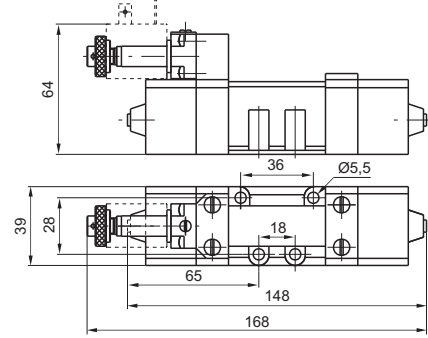
Operational characteristic	Fluid	Max working pressure (bar)	Temperature °C	Flow rate at 6 bar with Δp=1 (NI/min)
	Filtered and lubricated air	10	-5 - +50	840

**Solenoid - Differential - 5/2**

Ordering code
<b>1051.52.3.6.M2</b>



Weight gr. 900  
Minimum operating pressure 2 bar



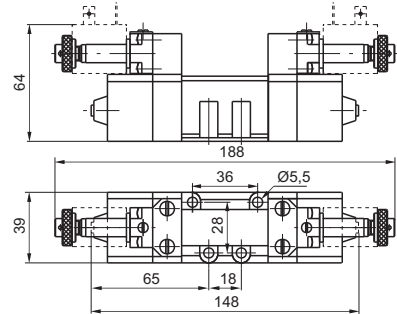
Operational characteristic	Fluid	Max working pressure (bar)	Temperature °C	Flow rate at 6 bar with Δp=1 (NI/min)
	Filtered and lubricated air	10	-5 - +50	840

**Solenoid - Solenoid - 5/2**

Ordering code
<b>1051.52.3.5.M2</b>



Weight gr. 1040  
Minimum operating pressure 1,5 bar



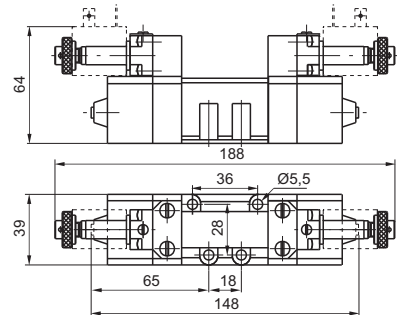
Operational characteristic	Fluid	Max working pressure (bar)	Temperature °C	Flow rate at 6 bar with Δp=1 (NI/min)
	Filtered and lubricated air	10	-5 - +50	840

**Solenoid - Solenoid - 5/3**

Ordering code
<b>1051.53.3.5.M2</b>
FUNCTION
31 = Closed centres
32 = Open centres
33 = Pressured centres



Weight gr. 1040  
Minimum operating pressure 3 bar

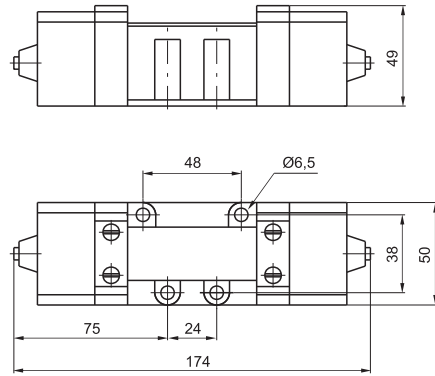


Operational characteristic	Fluid	Max working pressure (bar)	Temperature °C	Flow rate at 6 bar with Δp=1 (NI/min)
	Filtered and lubricated air	10	-5 - +50	720

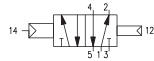


**Pneumatic - Differential - 5/2**

Ordering code
<b>1002.52.1.6</b>



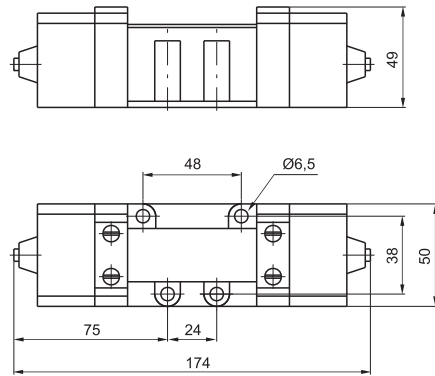
Weight gr. 730  
Minimum operating pressure 2 bar



Operational characteristic	Fluid	Max working pressure (bar)	Temperature °C	Flow rate at 6 bar with Δp=1 (l/min)
	Filtered and lubricated air	10	-5 - +70	1700

**Pneumatic - Pneumatic - 5/2**

Ordering code
<b>1002.52.1.8</b>



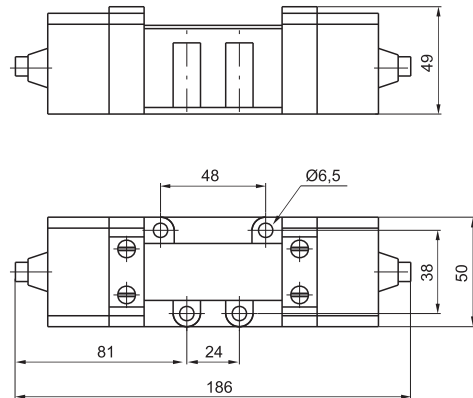
Weight gr. 800  
Minimum operating pressure 1,5 bar



Operational characteristic	Fluid	Max working pressure (bar)	Temperature °C	Flow rate at 6 bar with Δp=1 (l/min)
	Filtered and lubricated air	10	-5 - +70	1700

**Pneumatic - Pneumatic - 5/3**

Ordering code
<b>1002.53.F.1.8</b>
FUNCTION
<b>F</b> 31=Closed centres
32=Open centres
33=Pressured centres



Weight gr. 740  
Minimum operating pressure 3 bar



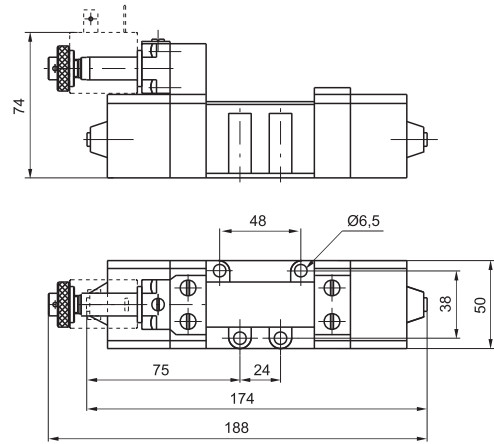
Operational characteristic	Fluid	Max working pressure (bar)	Temperature °C	Flow rate at 6 bar with Δp=1 (l/min)
	Filtered and lubricated air	10	-5 - +70	1700



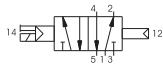
**Solenoid - Differential - 5/2**

Ordering code

**1052.52.3.6.M2**



Weight gr. 850  
Minimum operating pressure 2 bar



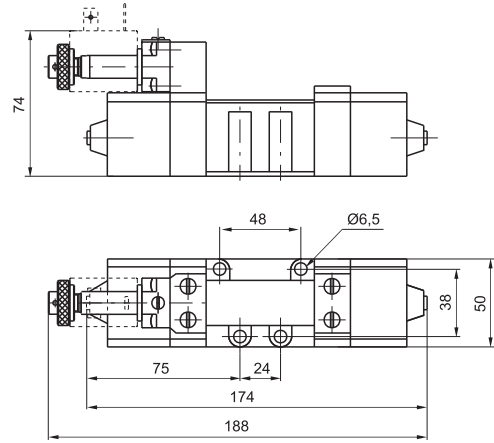
**Operational characteristic**

Fluid	Max working pressure (bar)	Temperature °C	Flow rate at 6 bar with Δp=1 (NI/min)
Filtered and lubricated air	10	-5 - +50	1700

**Solenoid - Solenoid - 5/2**

Ordering code

**1052.52.3.5.M2**



Weight gr. 980  
Minimum operating pressure 1,5 bar



**Operational characteristic**

Fluid	Max working pressure (bar)	Temperature °C	Flow rate at 6 bar with Δp=1 (NI/min)
Filtered and lubricated air	10	-5 - +50	1700

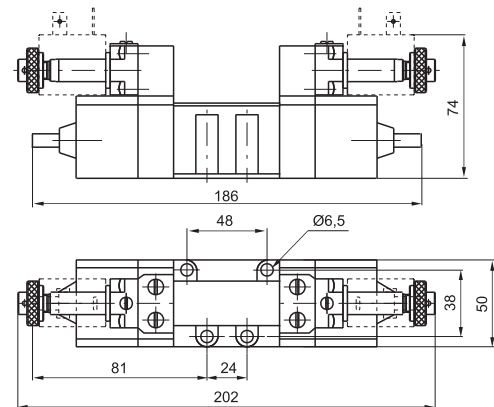
**Solenoid - Solenoid - 5/3**

Ordering code

**1052.53.F.3.5.M2**

**FUNCTION**

- F** 31=Closed centres
- 32=Open centres
- 33=Pressured centres



Weight gr. 980  
Minimum operating pressure 3 bar



**Operational characteristic**

Fluid	Max working pressure (bar)	Temperature °C	Flow rate at 6 bar with Δp=1 (NI/min)
Filtered and lubricated air	10	-5 - +50	1700