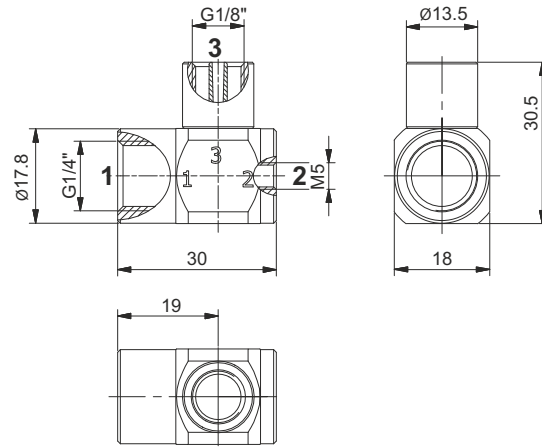
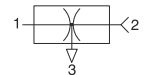


Single stage vacuum generator M5



Ordering code

19M05.S.08.SS.L0

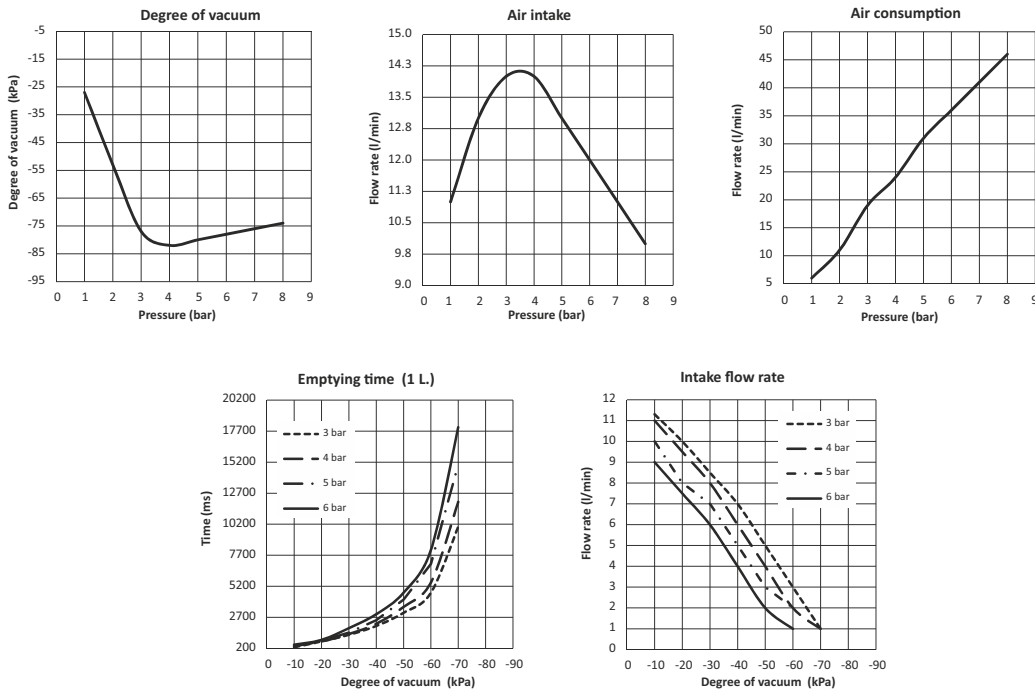


Single stage generators, with operation based on the Venturi principle; their main feature is the presence of feed pressure and connection for the vacuum, on the same axis. This makes it possible to connect the suction cups directly to the generator or through the suction cup holder, so therefore still on the same axis with obvious advantages in terms of system layout and simplicity. The outlet connection has a female thread G 1/8", or on circumference of the T06.

Performance characteristics

| | | | |
|----------------------------|----|----|----|
| - Supply pressure (bar) | 2 | 4 | 6 |
| - Degree of Vacuum (-kPa) | 53 | 82 | 78 |
| - Intake flow rate (l/min) | 13 | 14 | 12 |
| - Air consumption (l/min) | 11 | 24 | 36 |

Performance Charts



Technical features

| | |
|------------------|---------------------------|
| Fluid | Unlubricated filtered air |
| Pressure (bar) | 1 ÷ 8 |
| Temperature (°C) | -10 ÷ +80 |
| Weight (gr.) | 24 |