
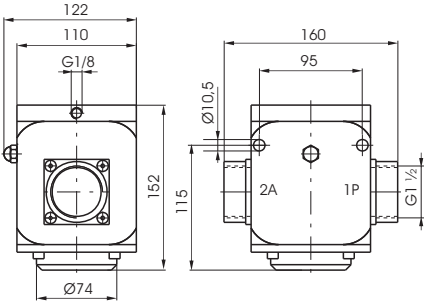
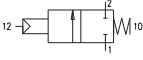


**Pneumatic - Spring**

Ordering code							
<b>776.22.11.1C</b>							


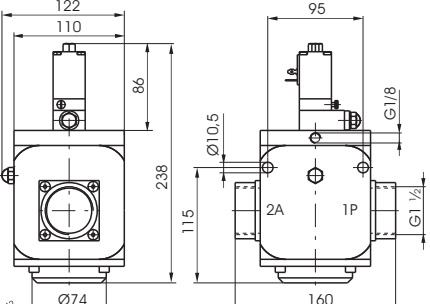
Weight gr. 3950  
Normally Closed  
Minimum piloting pressure 2,5 bar



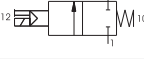

Operational characteristic	Fluid	Max working pressure (bar)	Temperature °C	Flow rate at 6 bar with Δp=1 (NI/min)	Orifice size (mm)	Working ports size	Pilot ports size
		Filtered and lubricated air	10	-5 - +70	33500	38	G1 1/2"

**Solenoid - Spring**

Ordering code							
<b>776.22.0.F.S</b>							
FUNCTION							
<b>F</b> 1AC=Internal Pilot Normally Closed							
1C=External Pilot Normally Closed							
<b>S</b> SOLENOID CODE							
See Valves Series 300 Type "S"							


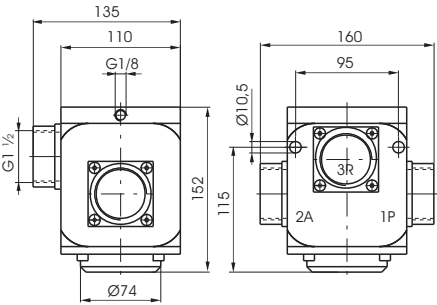
Weight gr. 4450  
Minimum piloting pressure 2,5 bar (External Pilot) - 3 bar (Internal Pilot)

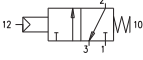
Operational characteristic	Fluid	Max working pressure (bar)	Temperature °C	Flow rate at 6 bar with Δp=1 (NI/min)	Orifice size (mm)	Working ports size	Pilot ports size
		Filtered and lubricated air	10	-5 - +50	33500	38	G1 1/2"

**Pneumatic - Spring**

Ordering code							
<b>776.32.11.1C</b>							


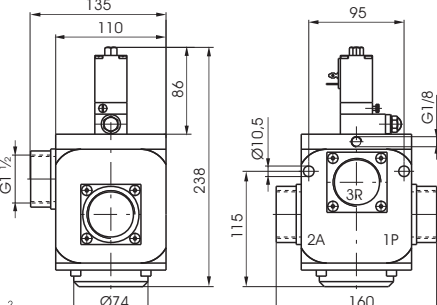
Weight gr. 3900  
Normally Closed  
Minimum piloting pressure 2,5 bar



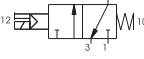

Operational characteristic	Fluid	Max working pressure (bar)	Temperature °C	Flow rate at 6 bar with Δp=1 (NI/min)	Orifice size (mm)	Working ports size	Pilot ports size
		Filtered and lubricated air	10	-5 - +70	33500	38	G1 1/2"

**Solenoid - Spring**

Ordering code							
<b>776.32.0.F.S</b>							
FUNCTION							
<b>F</b> 1AC=Internal Pilot Normally Closed							
1C=External Pilot Normally Closed							
<b>S</b> SOLENOID CODE							
See Valves Series 300 Type "S"							

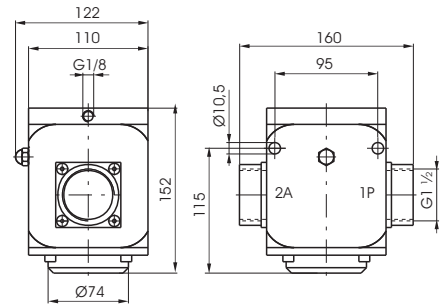
Weight gr. 4450  
Minimum piloting pressure 2,5 bar (External Pilot) - 3 bar (Internal Pilot)

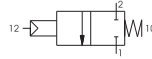
Operational characteristic	Fluid	Max working pressure (bar)	Temperature °C	Flow rate at 6 bar with Δp=1 (NI/min)	Orifice size (mm)	Working ports size	Pilot ports size
		Filtered and lubricated air	10	-5 - +50	33500	38	G1 1/2"

**Pneumatic - Spring**

Ordering code
<b>776/V.22.11.1C</b>



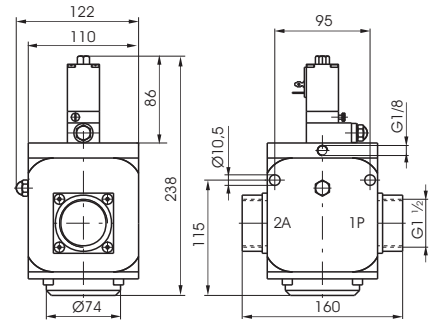
Weight gr. 3950  
Normally Closed  
Minimum piloting pressure 2 bar



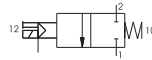
Operational characteristic	Fluid	Temperature °C	Orifice size (mm)	Working ports size	Pilot ports size
	Vacuum		-5 - +70	38	G1 1/2"

**Solenoid - Spring**

Ordering code
<b>776/V.22.0.1C.S</b>
<b>S</b> SOLENOID CODE See Valves Series 300 Type "S"



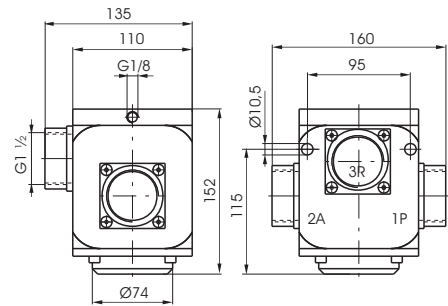
Weight gr. 4450  
External Pilot Normally Closed  
Minimum piloting pressure 2 bar



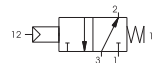
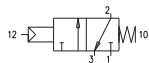
Operational characteristic	Fluid	Temperature °C	Orifice size (mm)	Working ports size	Pilot ports size
	Vacuum		-5 - +50	38	G1 1/2"

**Pneumatic - Spring**

Ordering code
<b>776/V.32.11.F</b>
<b>F</b> FUNCTION 1C=Normally Closed 1A=Normally Open



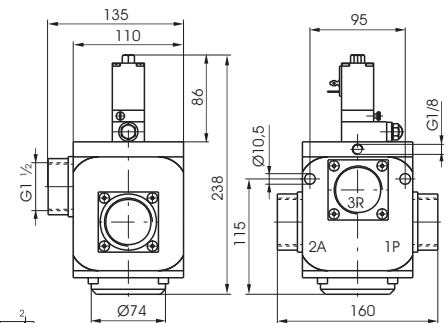
Weight gr. 3900  
Minimum piloting pressure 2 bar



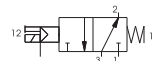
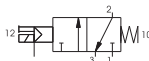
Operational characteristic	Fluid	Temperature °C	Orifice size (mm)	Working ports size	Pilot ports size
	Vacuum		-5 - +70	38	G1 1/2"

**Solenoid - Spring**

Ordering code
<b>776/V.32.0.F.S</b>
<b>F</b> FUNCTION 1C=External Pilot Normally Closed 1A=External Pilot Normally Open
<b>S</b> SOLENOID CODE See Valves Series 300 Type "S"



Weight gr. 4500  
Minimum piloting pressure 2 bar



Operational characteristic	Fluid	Temperature °C	Orifice size (mm)	Working ports size	Pilot ports size
	Vacuum		-5 - +50	38	G1 1/2"