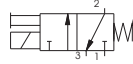


Solenoid valve S and S/1

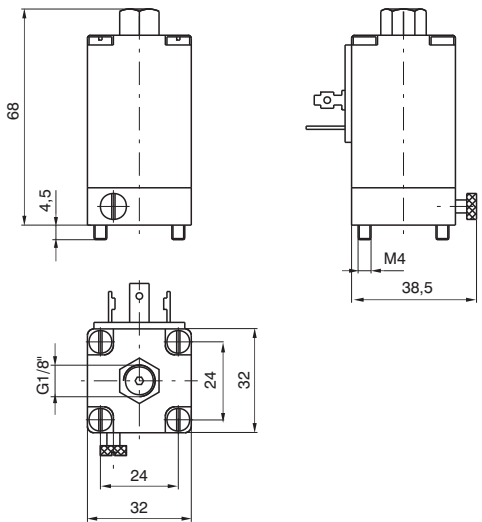
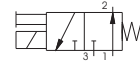


Weight 220 gr.

Normally Closed
(N.C.) - **S**



Normally Open
(N.O.) - **S/1**



Ordering code		Available voltages Coil	
S 2	S 2/1	6 D.C.	Direct current
S 4	S 4/1	12 D.C.	
S 5	S 5/1	24 D.C.	
S 6	S 6/1	48 D.C.	
S 16	S 16/1	12/50	Alternating current 50 Hz
S 17	S 17/1	24/50	
S 19	S 19/1	32/50	
S 20	S 20/1	42/50	
S 21	S 21/1	48/50	
S 22	S 22/1	110/50	
S 23	S 23/1	115/50	
S 24	S 24/1	230/50	
S 36	S 36/1	12/60	Alternating current 60 Hz
S 37	S 37/1	24/60	
S 38	S 38/1	48/60	
S 39	S 39/1	110/60	
S 40	S 40/1	115/60	
S 41	S 41/1	230/60	
S 56	S 56/1	24/50-60	Alternating current 50/60 Hz
S 57	S 57/1	110/50-60	
S 58	S 58/1	230/50-60	

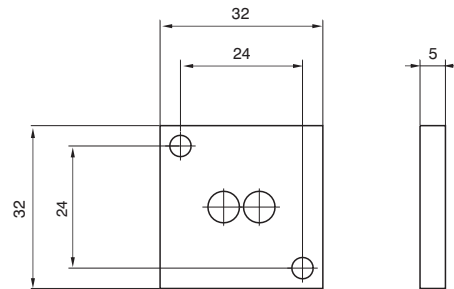
Closing plate

Ordering code

300.12.00



Weight 14 gr.



External feeding base

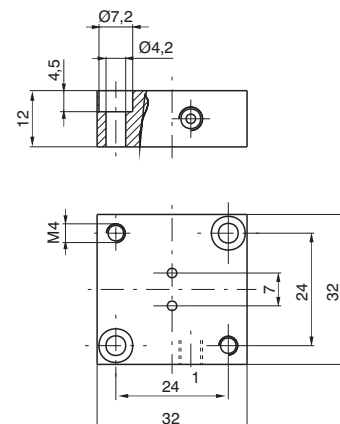
To be used with electrodistributeurs to get a different piloting pressure from the line one.

Ordering code

300.10.05

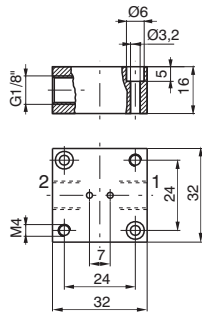


Weight 35 gr.





Individual base

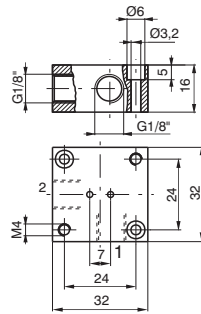


Weight 40 gr.

In line port - thread G 1/8"
 1 = INLET PORT (N.C.)
 2 = OUTLET PORT (N.C.)
 With solenoid valve N.O.
 1 = EXHAUST PORT
 2 = OUTLET PORT

Ordering code

300.04.00



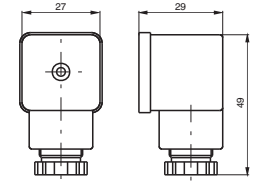
Weight 40 gr.

90° Port - thread G 1/8"
 1 = INLET PORT (N.C.)
 2 = OUTLET PORT (N.C.)
 With solenoid valve N.O.
 1 = EXHAUST PORT
 2 = OUTLET PORT

Ordering code

300.04.90

Electrical connector



Weight 25 gr.

Ordering code

300.11.00 Standard
300.11.0 L Led
 1 = 24 V D.C. / A.C.
 2 = 110 V 50/60 Hz
 3 = 230 V 50/60 Hz

Modular bases for series mounting

Ordering code

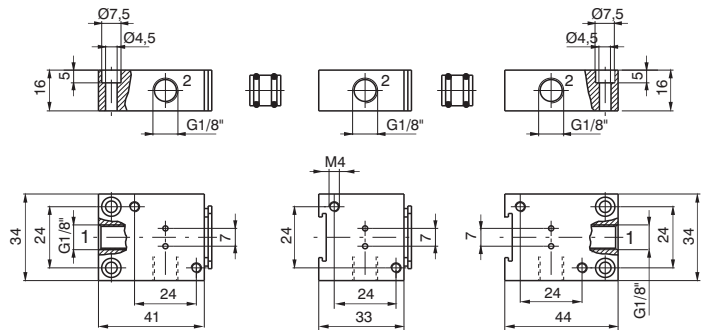
Initial base
300.05.00

Intermediate base
300.06.00

Last base
300.07.00

Bored spacer
300.05.01
 Weight 5 gr.

Solid spacer
300.05.02
 Weight 6 gr.



Initial base

Intermediate base

Last base



Weight 52 gr.

Weight 40 gr.

Weight 52 gr.

Multiple integral bases for series mounting



Ordering code

300.08.02 2 positions
300.08.03 3 positions
300.08.04 4 positions
300.08.05 5 positions

