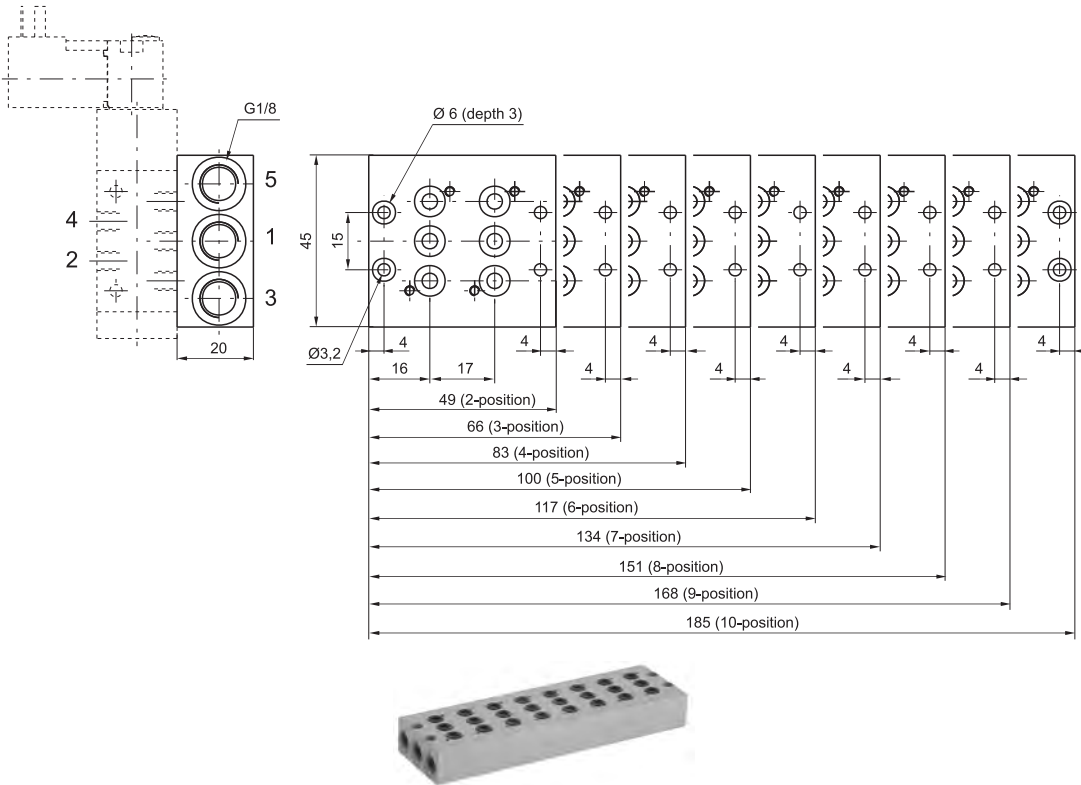


Manifolds



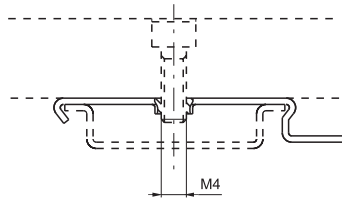
Ordering code

805.P

N. POSITIONS	
02=2 pos.	(weight gr. 95)
03=3 pos.	(weight gr. 130)
04=4 pos.	(weight gr. 160)
05=5 pos.	(weight gr. 190)
06=6 pos.	(weight gr. 225)
07=7 pos.	(weight gr. 260)
08=8 pos.	(weight gr. 290)
09=9 pos.	(weight gr. 325)
10=10 pos.	(weight gr. 365)

Clip

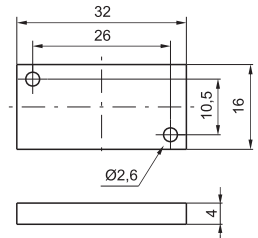
Closing plate



Ordering code

800.00

Weight gr. 5 - (for mounting the distributors groups on guide DIN 46277/3)



Ordering code

805.00

Weight gr. 15