



**60** kN

**FORGED STEEL IN MY BODY**

**DOUBLE ROLLER/TAPPER BEARING**

**-50** kN

**30** kN

**-25** kN

**1850** nm

**57** kg

**25** l/min

**ø130** M12(x10) mm

**1/2"** BSP

**300** bar

**1/2"** BSP

**250** bar

**300** bar

Hydraulic rotator FHR 6FF4X is ideal for professional use in forestry, agriculture, road and building construction, recycling industry, general cargo and material handling.



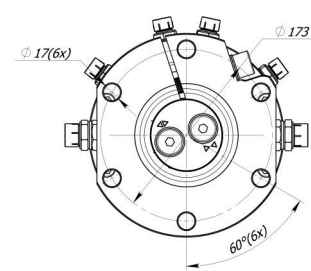
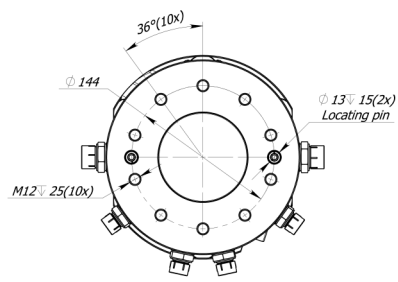
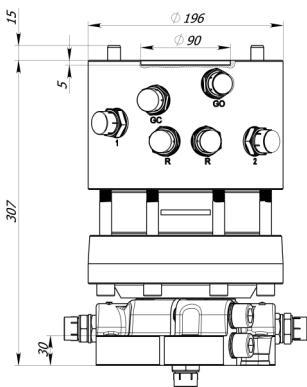
Rotator's upper mount is applied in FLANGE form factor. Rotator commonly is used for rigid mounting on the crane tip or in assembly with tilt equipment. Rotator is equipped with locating pins for ease mounting. top.flange.diameter 130mm. top.flange.screw.count 10 12 screws.

Rotator lower mount is applied in FLANGE form factor to mount direct on grapple / tool surface by fixing with screws

**ø173** 17(x6) mm

**1/2"** BSP

**1/2"** BSP



For additional information relating to price levels and technical data, please contact [sales@formiko.lv](mailto:sales@formiko.lv)


**Formiko Hydraulic s Ltd**  
Dzircema Str. 119 k-1,  
Rīga LV1055 LATVIA  
  
+371 294 49 552  
+371 264 59 383  
[sales@formiko.lv](mailto:sales@formiko.lv)  
[www.formiko.lv](http://www.formiko.lv)


On request by special conditions there are metric nipples available for rotator FHR 6FF4X








Hydraulic rotator FHR 6FF4X is ideal for professional use in forestry, agriculture, road and building construction, recycling industry, general cargo and material handling.


 Rotator's upper mount is applied in FLANGE form factor. Rotator commonly is used for rigid mounting on the crane tip or in assembly with tilt equipment. Rotator is equipped with locating pins for ease mounting. top.flange.diameter 130mm. top.flange.screw.count 10 12 screws.


 Rotator lower mount is applied in FLANGE form factor to mount direct on grapple / tool surface by fixing with screws

 Rotator FHR 6FF4X based on reliable vane type hydraulic motor which delivers torque up to 1850Nm at 25MPa.

 Formiko Hydraulics rotator FHR 6FF4X is equipped with double bearings to withstand both tensional and pushing loads.

 Some parts in rotator are built from shock resistant and deformation resistant forged steel.

 Rotator for shipping is packed in compact solid cardboard box with dimensions 400x250x250mm.

 We providing TWO year warranty for this rotator.

For additional information relating to price levels and technical data, please contact [sales@formiko.lv](mailto:sales@formiko.lv)

**Formiko Hydraulics Ltd**

Dzirciema Str. 119 k-1,  
Riga LV1055 LATVIA

+371 294 49 552  
+371 264 59 383  
[sales@formiko.lv](mailto:sales@formiko.lv)  
[www.formiko.lv](http://www.formiko.lv)

On request by special conditions there are metric nipples available for rotator FHR 6FF4X

