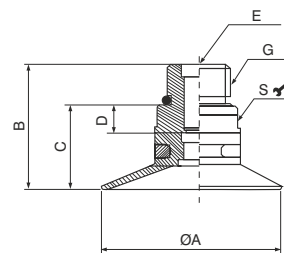
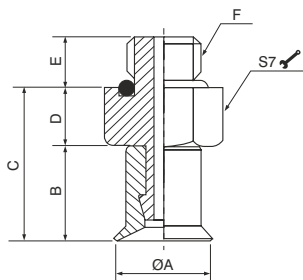


Standard round suction cup



Code	ØA	B	C	D	E	F
19VTN.V.05.004.00	5	6.1	10.1	4	3.5	M5
19VTN.V.05.008.00	9	7	11	4	3.5	M5
19VTN.V.05.010.00	11	10.5	15.5	5	3.5	M5

Code	ØA	B	C	D	E	G	S
19VTN.V.18.020.00	22	15.5	9.5	1.5	M5	G1/8"	S12
19VTN.V.18.030.00	32	17	11	1.5	M5	G1/8"	S12
19VTN.V.18.040.00	42	25	18	5	-	G1/8"	S17
19VTN.V.14.050.00	53	32.5	23.5	6	-	G1/8"	S24

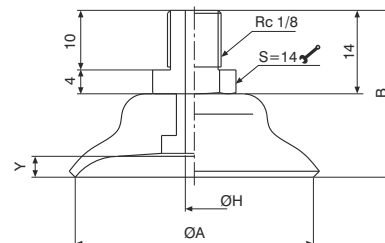
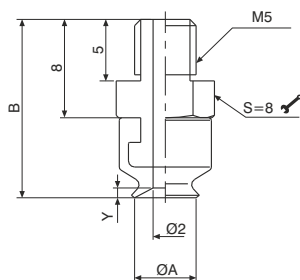
Standard round suction cup, suitable for gripping and moving with vacuum, objects with flat or slightly curved surfaces, allows gripping on concave surfaces.

Table of lifting forces

Code	Volume cm <sup>3</sup>	Lifting force in vertical direction (N)			Lifting force in parallel direction (N)			Weight (gr.)
		-20kPa	-60kPa	-90kPa	-20kPa	-60kPa	-90kPa	
19VTN.V.05.004.00	0.03	0.198	0.885	1.275	0.198	0.78	1	2.3
19VTN.V.05.008.00	0.1	1	2.55	3.8	1	2.85	3.35	2
19VTN.V.05.010.00	0.18	1.48	4.4	6.85	1.5	4.4	4.9	2.7
19VTN.V.18.020.00	1	5.9	12.2	16	5.9	8.8	9.8	3
19VTN.V.18.030.00	2	13	25	33	7.8	9.8	11	4.2
19VTN.V.18.040.00	5.5	20	37.5	60	13.8	22	27.5	11
19VTN.V.14.050.00	12	35.5	74	95	20	37	44	26.6

Material	Colour	Hardness °Shore A	Operating temperature °C
NBR	black	55	-20 ÷ 110
Silicone	red	50	-40 ÷ 200

Cup-style round suction cup



Code	ØA	B	Y
19VTC.N.05.006.00	6	14.5	0.8
19VTC.N.05.008.00	8	15	1.2
19VTC.N.05.010.00	10	15.5	1.5

Code	ØA	B	ØH	Y
19VTC.N.18.015.00	15	22	2	1.9
19VTC.N.18.020.00	20	24	3	2.3
19VTC.N.18.030.00	30	26	3	2
19VTC.N.18.040.00	40	28	3	3.5
19VTC.N.18.050.00	50	29	4	4

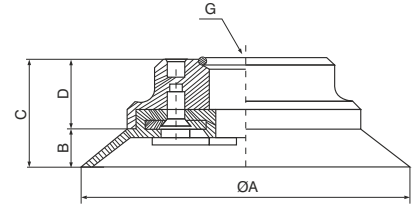
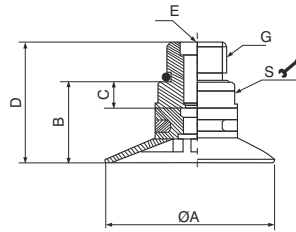
Typical cup-shaped suction cup, suitable for gripping and moving with vacuum, objects with flat or slightly curved surfaces, allows gripping on concave surfaces.

Table of lifting forces

Code	Volume cm <sup>3</sup>	Lifting force in vertical direction (N)		Weight (gr.)
		-60kPa	-90kPa	
19VTC.N.05.006.00	0.03	0.5	0.8	2.3
19VTC.N.05.008.00	0.1	1	1.5	2.4
19VTC.N.05.010.00	0.18	1.5	2	2.5
19VTC.N.18.015.00	0.9	5	7.5	11.5
19VTC.N.18.020.00	2.5	8.5	11	13.6
19VTC.N.18.030.00	5	18	23	14.9
19VTC.N.18.040.00	12	30	35	19.4
19VTC.N.18.050.00	15	45	60	29.4

Material	Colour	Hardness °Shore A	Operating temperature °C
NBR	black	55	-20 ÷ 110

Round flat suction cup



Code	ØA	B	C	D	E	G	S
19VTP:V.18.020.00	22	9.5	1.5	15.5	M5	G1/8"	S12
19VTP:V.18.025.00	27	10.5	1.5	16.5	M5	G1/8"	S12
19VTP:V.18.030.00	32	11.5	1.5	17.5	M5	G1/8"	S12
19VTP:V.18.040.00	42	18	5	25	-	G1/8"	S17
19VTP:V.14.050.00	53	22.5	6	32.5	-	G1/4"	S24

Code	ØA	B	C	D	G
19VTP:V.14.075.00	77	8	26	18	G1/4"
19VTP:V.12.110.00	112	14	29	15	G1/2"
19VTP:V.12.150.00	152	18	33	14	G1/2"

Flat round suction cup, suitable for gripping and moving with vacuum, objects with flat surfaces, offers good stability and minimal displacement. Recommended for applications with force parallel to grip plane, suitable for moving glass, wood, steel and plastic sheets. Internal reinforcements prevent thin objects from deforming and increase friction in applications with forces parallel to grip plane.

Table of lifting forces

Code V = Version N = NBR / S = Silicone	Volume cm <sup>3</sup>	Lifting force in vertical direction (N)			Lifting force in parallel direction (N)			Weight (gr.)
		-20kPa	-60kPa	-90kPa	-20kPa	-60kPa	-90kPa	
19VTP:V.18.020.00	1	6	15	18.7	5	7.95	8.45	3.1
19VTP:V.18.025.00	1.1	9.2	19.3	24.9	7.95	8.95	10	3.6
19VTP:V.18.030.00	2	13	24.8	30.8	11	15.98	20	4.5
19VTP:V.18.040.00	4.8	20	40	50	15	25	29.5	11.5
19VTP:V.14.050.00	10	37	74	96	24	40	50	27.9
19VTP:V.14.075.00	20	80	201	272	60	110	140	121.3
19VTP:V.12.110.00	70	141	418.5	562	140	248	299.7	245.3
19VTP:V.12.150.00	160	300	845	1098	250	600	800	605

Material	Colour	Hardness °Shore A	Operating temperature °C
NBR	black	55	-20 ÷ 110
Silicone	red	50	-40 ÷ 200