

SCHEDA TECNICA “ASTINE” PER RACCORDI

Le astine, serie 407 e superiori e 15A, per l'impiego con i nostri raccordi tipo anelli girevoli, automatici e non, sono realizzati in Italia, a garanzia di elevati standard di qualità, secondo le normative ISO di riferimento, e rispondono alle seguenti specifiche tecniche e applicative:

FLUIDO

Aria compressa, acqua fino a 100 °C (per altri fluidi contattare il nostro UT)

APPLICAZIONI

Pneumatica, idraulica a bassa pressione, secondo normativa DIN 3861-3870

TEMPERATURE E PRESSIONI

Le temperature e le pressioni dipendono generalmente dalle caratteristiche del tubo impiegato

FILETTATURE

BSP cilindrica UNI-ISO 228
BSP conica UNI-ISO 7
Metrica ISO/R 262

MATERIALI UTILIZZATI

Ottone nichelato UNI EN 12164 CW614N (corpo)
NBR 70 DWGV-EN549 UL157 (guarnizioni tenuta)
Nylon/Alluminio (rondelle)

“STEMS” SERIES TECHNICAL SHEET

Stems, 407 series and higher, and 15A series, employed with our banjo fittings (push-in type, quick type, etc.) are produced in Italy according to the reference ISO norms as warranty of high quality level and answer to the followings technical specifications and applications:

FLUIDS

Compressed air, water up to 100 °C (for different fluid pls contact our Technical Dept.)

APPLICATIONS

Pneumatic circuits, low pressure hydraulic applications, according to DIN 3861-3870 norms

TEMPERATURES AND PRESSURES

Temperatures and pressures usually depend by the technical features of the employed tubes

THREAD TYPE

*BSP parallell UNI-ISO 228
BSP tapered UNI-ISO 7
Metric ISO/R 262*

MATERIALS

*Nickel plated brass UNI EN 12164 CW614N (body)
NBR 70 DWGV-EN549 UL157 (seals)
Nylon/Aluminium (washers)*

1 O-RING ESTERNO
EXTERNAL O-RING

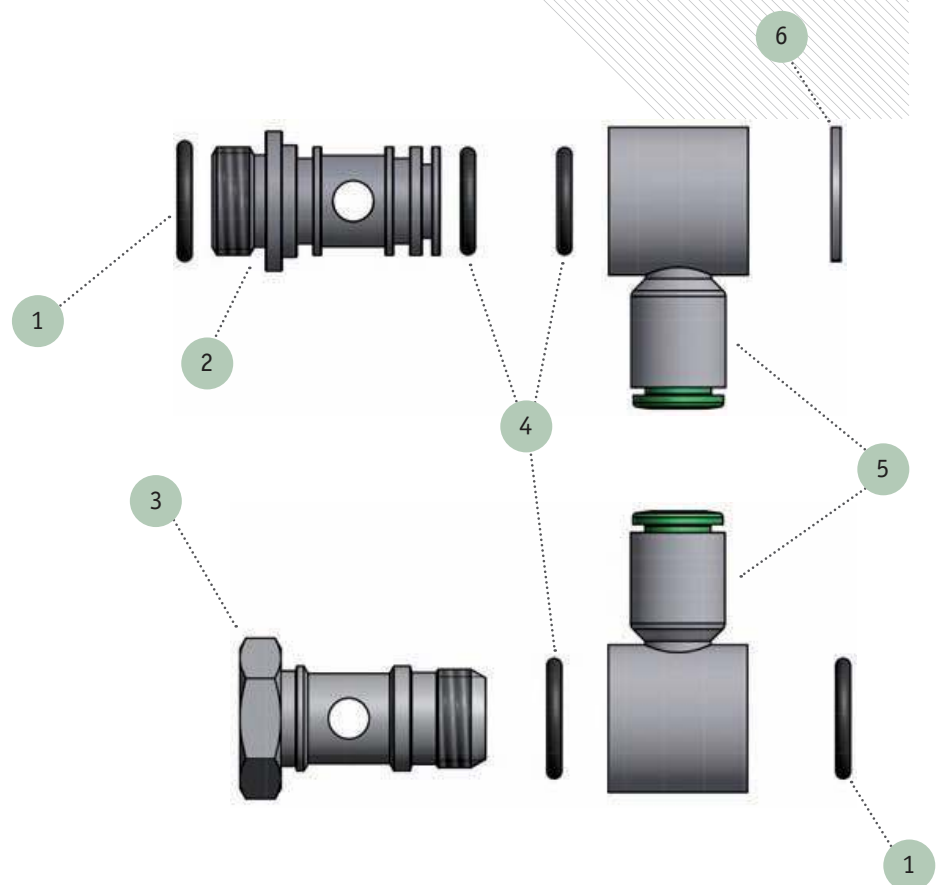
2 ASTINA GIREVOLE MODELLO 15A
SWIVEL STEM 15A TYPE

3 ASTINA FISSA MODELLO 407
FIX STEM 407 TYPE

4 O-RING INTERNO
INTERNAL O-RING

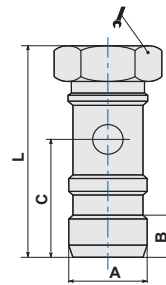
5 ANELLO GIREVOLE MODELLO T13
SWIVEL BANJO T13 TYPE

6 ANELLO ELASTICO
ELASTIC RING



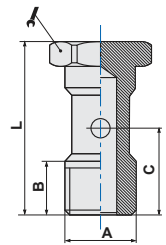
ART. 407 Vite cava semplice con O-Ring
Banjo stem single with O-Ring

CODICE	A	B	C	L		
40718	G1/8	4,5	13,75	25	14	100
40714	G1/4	9,9	16,7	30	17	50
40738	G3/8	6	18	34	22	25
40712	G1/2	7,4	21,5	39,5	27	25



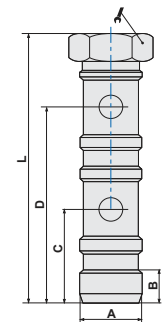
ART. 407V Vite cava semplice
Banjo stem single

CODICE	A	B	C	L		
407M5	M5	5,8	9,6	18	8	100
40718V	G1/8	9	15	28	14	100
40714V	G1/4	11	18	33	17	50
40738V	G3/8	12	21,5	37	22	50
40712V	G1/2	14	24	42	27	25



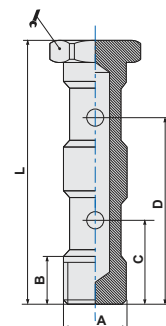
ART. 408 Vite cava doppia con O-Ring
Banjo stem double with O-Ring

CODICE	A	B	C	D	L		
40818	G1/8	4,5	13	29	40	14	50
40814	G1/4	6	16,5	33,5	47	17	50
40838	G3/8	8,5	18	37,6	52,5	22	25
40812	G1/2	7,4	21,5	45	63	27	10



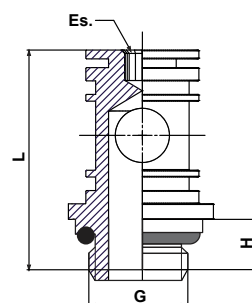
ART. 408V Vite cava doppia
Banjo stem double

CODICE	A	B	C	D	L		
40818V	G1/8	9	15	31	44,5	14	50
40814V	G1/4	11	17	36	51,5	17	50
40838V	G3/8	12	20,5	42	58,6	22	25
40812V	G1/2	14	24	50	68	24	10



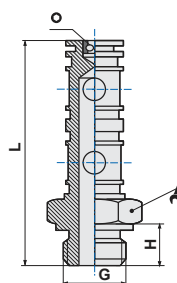
ART. 15A Asta singola per anello girevole
Single stem for swivel banjo

CODICE	G	L	ES.	H	
15AM5	M5	17	2,5	4,0	10
15AM5L	M5	18	2,5	4,0	10
15AM6L	M6	19	2,5	5,0	10
15A18	1/8	24,5	3	5,5	10
15A14	1/4	28	4	6,5	10
15A38	3/8	32,5	5	7,5	10
15A12	1/2	39	8	10,0	10



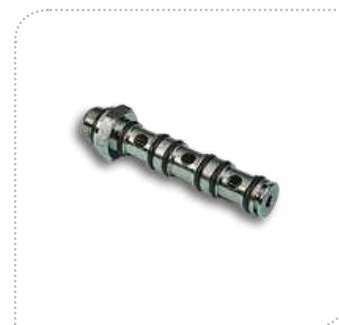
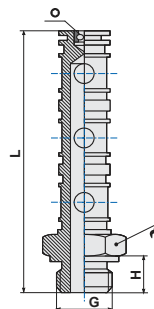
ART. 33A Asta doppia per anello girevole
Double stem for swivel banjo

CODICE	G	H	L				
33AM5L	M5	4,0	28,0		N.C.	2,5	50
33A18	1/8	5,5	43,3		14	3	50
33A14	1/4	6,5	50,0		18	4	50



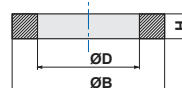
ART. 34A Asta tripla per anello girevole
Triple stem for swivel banjo

CODICE	G	H	L				
34A18	1/8	5,5	58,4		14	3	50
34A14	1/4	6,5	67,1		18	4	25



ART. 411 Rondella distanziatrice
Spacer washer

CODICE	A	ØB	ØD	H	
411PM5	M5	9	5,1	1,5	100
411P18	G1/8	14	9,8	1,5	100
411P14	G1/4	18	13,5	1,5	100
411P38	G3/8	21	16,7	1,5	100
411P12	G1/2	26	21,1	2	100
411M5	M5	8,8	5,2	1	100
41118	G1/8	13,8	9,8	1,5	100
41114	G1/4	18	13,2	1,5	100
41138	G3/8	21	16,8	1,5	100
41112	G1/2	26	20,8	1,5	100
41134	G3/4	32,8	26,8	1,5	100



P = versione in nylon
P = nylon material
A = taglia - A = size