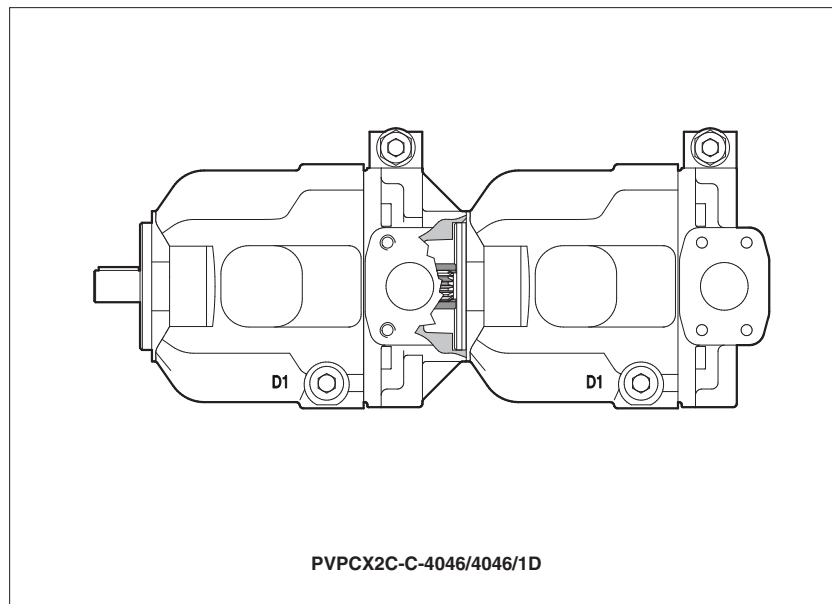


Multiple axis piston pumps type PVPCX2C

variable displacement

Available only on request



PVPCX2C are combined groups made by two variable displacement axial piston pumps type PVPC coupled together by means of a special intermediate flange and joint.

The pumps are available with standard max displacement 29, 46, 71 and 88 cc/rev and with standard mechanical controls (see KT catalog, tab. A160)

Other executions with proportional controls are available on request.

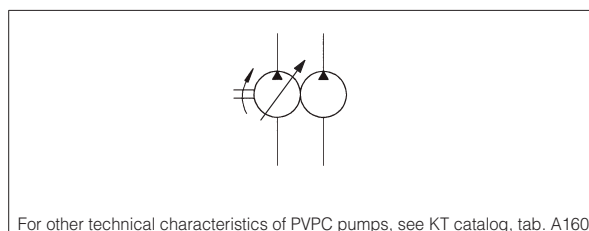
1 MODEL CODE

080***	PVPCX2C	-	CH	-	4	046	/	3	029	/	1	D	-I	X	24DC	*	/*	
Special code																		Seals material: - = NBR PE = FKM
Axial piston pumps multiple execution																		
Type of control first / second pump (1): C = manual pressure compensator CH = manual pressure compensator, with venting R = remote pressure compensator L = load sensing (pressure & flow) LW = constant power (combined pressure & flow)																		
Size of first pump see section 2: 3 = for displacement 029 4 = for displacement 046 5 = for displacement 073 and 090																		
Max displacement of first pump see section 2: 029 = 29 cm ³ /rev 046 = 46 cm ³ /rev 073 = 73 cm ³ /rev 090 = 88 cm ³ /rev																		
Size of second pump see section 2: 3 = for displacement 029 4 = for displacement 046 5 = for displacement 073 and 090																		
Max displacement of second pump see section 2: 029 = 29 cm ³ /rev 046 = 46 cm ³ /rev 073 = 73 cm ³ /rev 090 = 88 cm ³ /rev																		
(1) proportional controls available on request, consult our technical office																		
Direction of rotation (viewed at the shaft end) D = clockwise S = counterclockwise																		
Solenoid of pilot valve (only for control type CH): -I = solenoid OI (DHI) for AC and DC supply																		
X = without connector (only for control type CH)																		
Supply voltage (only for control type CH): see KT catalog, tab. A160, section 5:																		
Series number																		
Shaft (SAE Standard): 1 = keyed (7/8" for 029 - 1" for 046 - 1 1/4" for 073 and 090) 5 = splined (13 teeth for 029 - 15 for 046 - 14 for 073 and 090)																		

2 PUMPS SIZE AND DISPLACEMENT

size code	displacement code	max displacement [cm ³ /rev]
3	029	29
4	046	46
5	073	73
	090	88

3 HYDRAULIC SYMBOL



4 PUMPS COMBINATIONS AND SHAFT TORQUE

Multiple pump	First pump	1 st shaft max torque [Nm]		Second pump	2 nd shaft max torque [Nm]
		type 1	type 5		
080*** PVPCX2C-*/*-3029/3029	PVPCXB-*.3029/*	200	190	PVPC-X-3029/5*	135
080*** PVPCX2C-*/*-4046/3029	PVPCXB-*.4046/*	230	330	PVPC-X-3029/5*	250
080*** PVPCX2C-*/*-4046/4046	PVPCXB-*.4046/*	230	330	PVPC-X-4046/5*	250
080*** PVPCX2C-*/*-5073/3029	PVPCXB-*.5073/*	490	620	PVPC-X-3029/5*	330
080*** PVPCX2C-*/*-5073/4046	PVPCXB-*.5073/*	490	620	PVPC-X-4046/5*	330
080*** PVPCX2C-*/*-5073/5073	PVPCXC-*.5073/*	490	620	PVPC-X-5073/5*	440
080*** PVPCX2C-*/*-5090/3029	PVPCXB-*.5090/*	490	620	PVPC-X-3029/5*	330
080*** PVPCX2C-*/*-5090/4046	PVPCXB-*.5090/*	490	620	PVPC-X-4046/5*	330
080*** PVPCX2C-*/*-5090/5073	PVPCXC-*.5090/*	490	620	PVPC-X-5073/5*	440
080*** PVPCX2C-*/*-5090/5090	PVPCXC-*.5090/*	490	620	PVPC-X-5090/5*	440

5 DIMENSIONS [mm]

080* PVPCX2C-C/C-3029/3029**

IN 221.7 182.7 39 231.2 221.7

PVPC-C-3029 PVPC-C-3029

080* PVPCX2C-C/C-4046/3029**

IN 227.7 182.7 45 260.5 221.7

PVPC-C-4046 PVPC-C-3029

080* PVPCX2C-C/C-4046/4046**

IN 251 206 45 260.5 251

PVPC-C-4046 PVPC-C-4046

080* PVPCX2C-C/C-5073/3029**

IN 238.4 182.7 55.7 303.6 221.7

PVPC-C-5073 PVPC-C-3029
PVPC-C-5090

080* PVPCX2C-C/C-5073/4046**

IN 261.7 206 55.7 303.6 251

PVPC-C-5073 PVPC-C-4046
PVPC-C-5090

080* PVPCX2C-C/C-5073/5073**

IN 290.9 235.2 55.7 303.6 290.9

PVPC-C-5073 PVPC-C-5073
PVPC-C-5090

Note:
The above dimensions are referred to the basic pumps with control type C.
For other type of controls (CH, R, L, LW) the reported dimensions remains uncharged