

RM4-*-MP

SUBPLATE WITH PRESSURE RELIEF VALVE

SERIES 40

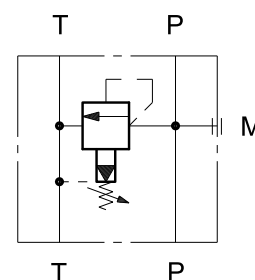
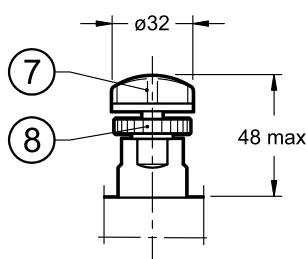
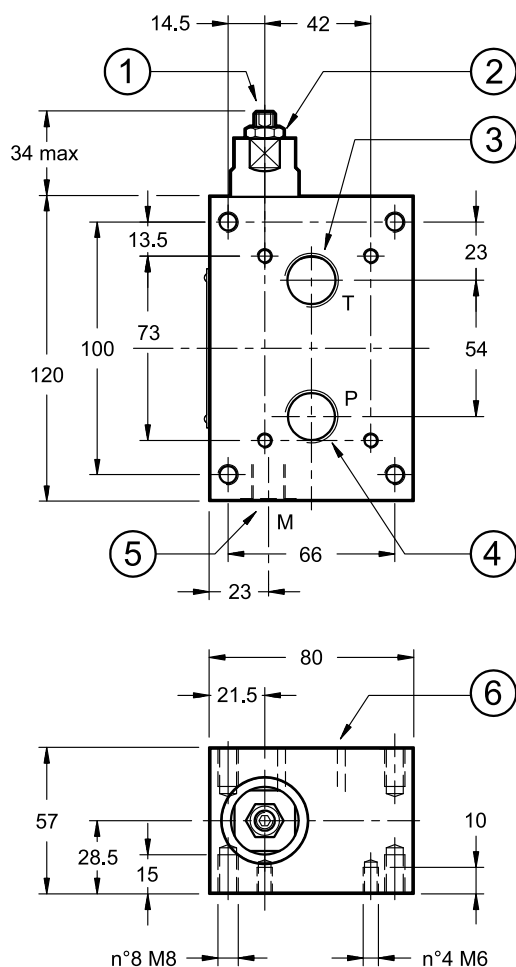
- The RM4-*-MP subplate includes a pressure relief valve with P and T threaded ports.
- It is used as mounting surface for P2D and P4D subplates on power packs.
- It is available in four pressure adjustment ranges up to 350 bar.
- It is supplied with a socket set screw with locking nut, or alternatively with knob and maximum adjustment limiting device.

THREADED PORTS

p max 350 bar
Q max 100 l/min

1 - OVERALL AND MOUNTING DIMENSIONS

dimensions in mm



1	Socket hex adjustment screw: Hex key 4. Rotate clockwise to increase pressure
2	Locking nut: spanner 13
3	Tank port 1/2" BSP
4	Pressure port 1/2" BSP
5	Pressure gauge port 1/4" BSP
6	Tank port 3/4" BSP
7	Locking ring
8	Adjustment knob: K

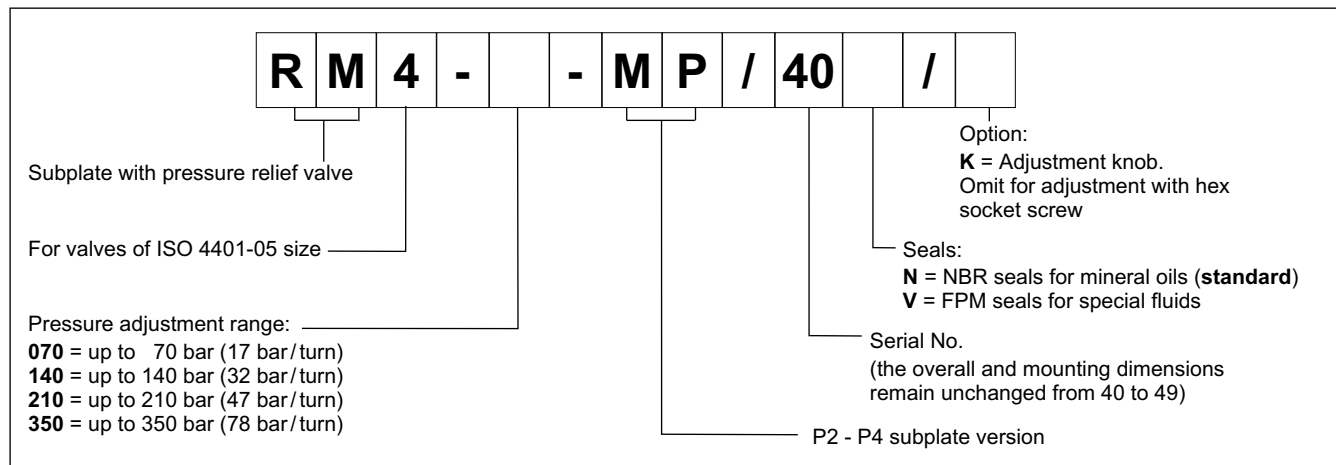
Mass: kg 3,5



RM4-*-MP

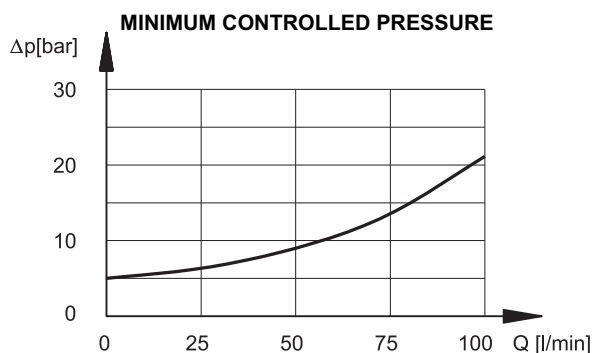
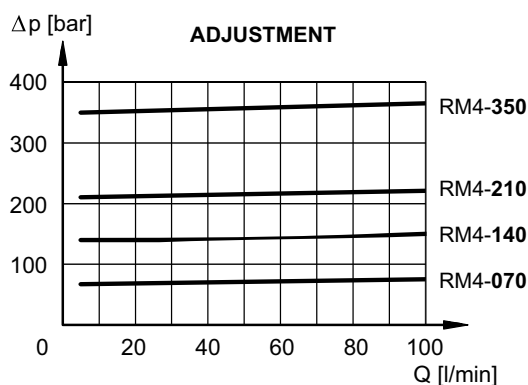
SERIES 40

2 - IDENTIFICATION CODE



3 - CHARACTERISTIC CURVES

(values obtained with viscosity of 36 cSt at 50°C)



4 - HYDRAULIC FLUIDS

Use mineral oil-based hydraulic fluids HL or HM type, according to ISO 6743-4. For these fluids, use NBR seals (code N). For fluids HFDR type (phosphate esters) use FPM seals (code V). For the use of other kinds of fluid such as HFA, HFB, HFC, please consult our technical department.

Using fluids at temperatures higher than 80 °C causes a faster degradation of the fluid and of the seals characteristics. The fluid must be preserved in its physical and chemical characteristics.