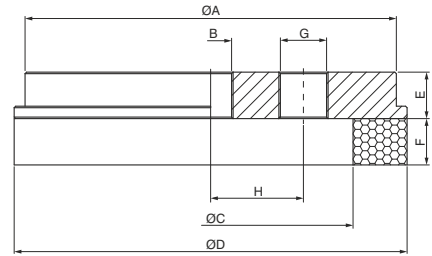
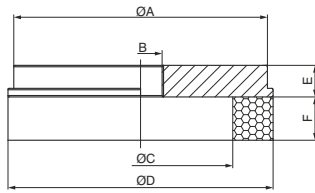


Foam rubber round suction cup



Code	ØA	B	ØC	ØD	E	F
19VTN.G.14.040.00	40	G1/4"	20	40	10	15
19VTN.G.14.064.00	60	G1/4"	40	64	10	15
19VTN.G.14.092.00	88	G1/4"	64	92	11	15

Code	ØA	B	ØC	ØD	E	F	G	H
19VTN.G.14.127.00	120	G1/4"	92	127	15	15	G3/8"	30

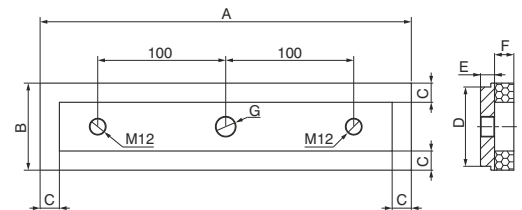
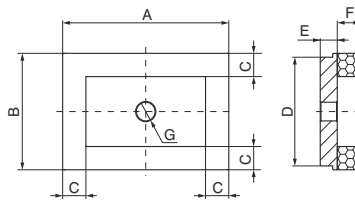
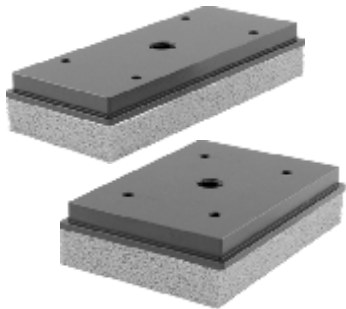
Foam rubber round suction cup is made from a special mixture called "NR", which has a density that allows for gripping even on very rough and irregular surfaces, and allows its elasticity to be maintained even after several working cycles. Especially suited for moving loads with coarse or very rough surfaces such as: sawn, bush-hammered or flamed marble, textured, non-slip or ribbed/corrugated sheets, brick, items made of rough concrete, garden walkway tiles, etc., and in general in all cases where traditional suction cups cannot be used. Recommended for handling loads with lifting force parallel to the surface and for the movement of loads with oiled surfaces.

Table of lifting forces

Code	Lifting force in vertical direction (N)	Weight (gr.)
	-60kPa	
19VTN.G.14.040.00	7.8	33.4
19VTN.G.14.064.00	35	82.4
19VTN.G.14.092.00	84	197.8
19VTN.G.14.127.00	172	489.3

Material	Colour	Hardness °Shore A	Operating temperature °C
Foam rubber "NR"	Orange	30	-20 ÷ 80

Foam rubber rectangular suction cup



Code	A	B	C	D	E	F	G
19VRN.G.22.NxH.00	107	75	15	70	11	15	M12
19VRN.G.22.RxF.00	135	60	15	55	11	15	M12

Code	A	B	C	D	E	F	G
19VRN.G.12.SxR.00	290	140	15	134	11	15	G1/2"

Foam rubber rectangular suction cup is made from a special mixture called "NR", which has a density that allows for gripping even on very rough and irregular surfaces, and allows its elasticity to be maintained even after several working cycles. Especially suited for movement of loads with coarse or very rough surfaces such as: sawn, bush-hammered or flamed marble, textured, non-slip or ribbed/corrugated sheets, brick, items made of rough concrete, garden walkway tiles, etc. and in general in all cases where traditional suction cups cannot be used. Not recommended for handling loads with lifting force parallel to the surface or for the movement of loads with oiled surfaces.

Table of lifting forces

Code	Lifting force in vertical direction (N)	Weight (gr.)
	-60kPa	
19VRN.G.22.NxH.00	88	236.7
19VRN.G.22.RxF.00	79	231.7
19VRN.G.12.SxR.00	706	1175.1

Material	Colour	Hardness °Shore A	Operating temperature °C
Foam rubber "NR"	Orange	30	-20 ÷ 80