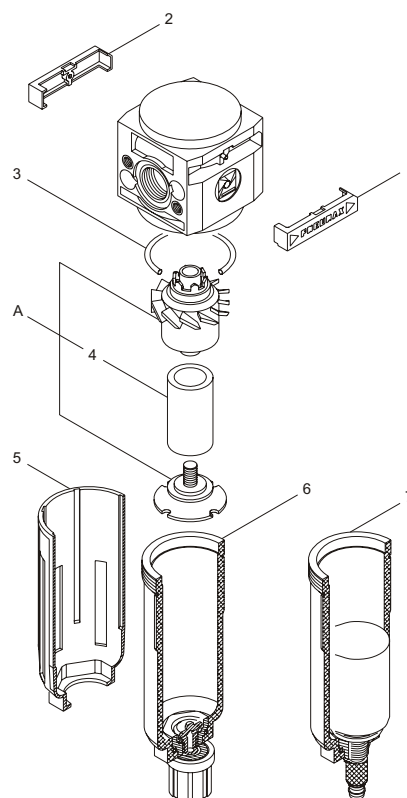


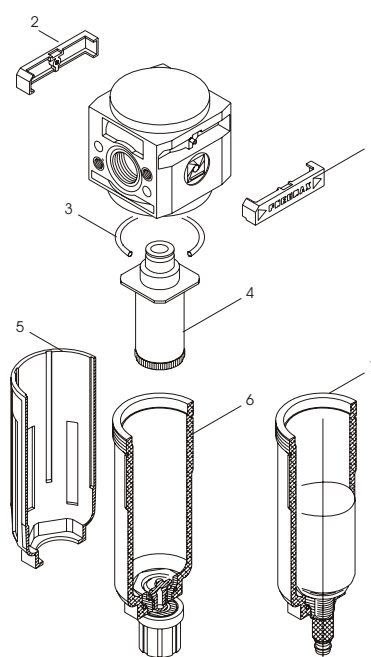
Filter

Pos.	Codice	Descrizione
1	RS/1701/10	Front tab
2	RS/1701/11	Rear tab
3	RS/OR 2125	Seal
4	RS/1701/13	Porous filter element 20μ
	RS/1701/52	Porous filter element 5μ
	RS/1701/53	Porous filter element 50μ
5	RS/1701/7	Bowl protection
6	RK1701A/013	Filter bowl c/w drain valve
7	RK1701A/018	Filter bowl c/w automatic drain
A	RK1701A/014	Filter group assembly 20μ
	RK1701A/021	Filter group assembly 5μ
	RK1701A/022	Filter group assembly 50μ



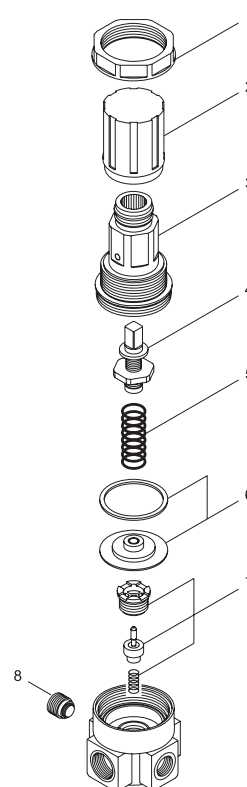
Coalescing filter

Pos.	Codice	Descrizione
1	RS/1701/93	Front tab
2	RS/1701/94	Rear tab
3	RS/OR 2125	Seal
4	RK1701A/027	Coalescent group 0.1μ
5	RS/1701/7	Bowl protection
6	RK1701A/013	Filter bowl c/w drain valve
7	RK1701A/018	Filter bowl c/w automatic drain



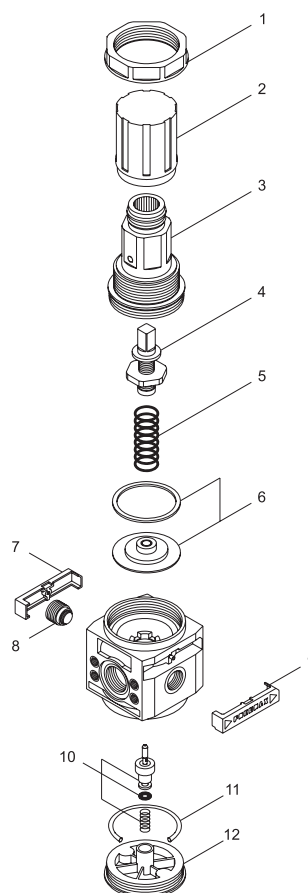
Panel mounting pressure regulator

Pos.	Codice	Descrizione
1	RS/1701/12	Lock nut
2	RS/1701/3	Adjusting knob
3	RS/1701/2	Adjusting support
4	RK1701A/016	Adjusting screw assembly
5	RS/1701/30	Spring 0- 2 bar range
	RS/1701/29	Spring 0- 4 bar range
	RS/1701/28	Spring 0- 8 bar range
	RS/1701/31	Spring 0- 12 bar range
6	RK1701A/012	Diaphragm assembly
	RK1701A/024	Diaphragm assembly w/o relieving
7	RK1701A/023	Ugello completo di otturatore
8	RK1701A/020	Plug c/w seal G1/8



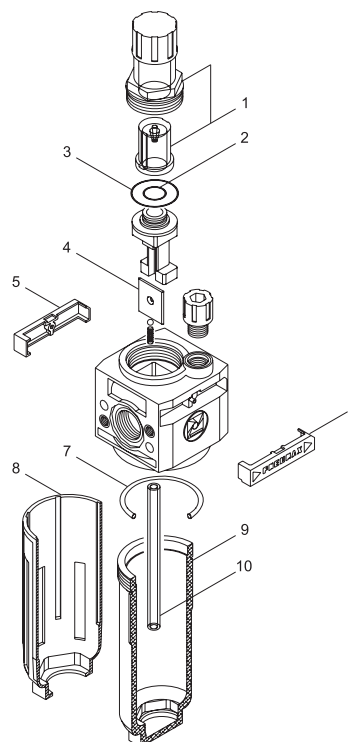
Modular pressure regulator

Pos.	Codice	Descrizione
1	RS/1701/12	Lock nut
2	RS/1701/3	Adjusting knob
3	RS/1701/2	Adjusting support
4	RK1701A/016	Adjusting screw assembly
5	RS/1701/30	Spring 0- 2 bar range
	RS/1701/29	Spring 0- 4 bar range
	RS/1701/28	Spring 0- 8 bar range
	RS/1701/31	Spring 0- 12 bar range
6	RK1701A/012	Diaphragm assembly
	RK1701A/024	Diaphragm assembly w/o relieving
7	RS/1701/11	Rear tab
8	RK1701A/020	Plug c/w seal G1/8
9	RS/1701/10	Front tab
10	RK1701A/025	Poppet c/w spring
11	RS/OR 2125	Seal
12	RS/1701/32	Plug



Lubricator

Pos.	Codice	Descrizione
1	RK1701A/026	Lubricator sight dome assembly
2	RS/OR 5x1,5	Seal
3	RS/OR 2075	
4	RS/1701/43	Venturi diaphragm
5	RS/1701/11	Rear tab
6	RS/1701/10	Front tab
7	RS/OR 2125	Seal
8	RS/1701/7	Bowl protection
9	RS/1701/41	Lubricator bowl
10	RS/1701/47	Oil tube



Filter-pressure regulator

Pos.	Codice	Descrizione
1	RS/1701/12	Lock nut
2	RS/1701/3	Adjusting knob
3	RS/1701/2	Adjusting support
4	RK1701A/016	Adjusting screw assembly
5	RS/1701/30	Spring 0- 2 bar range
	RS/1701/29	Spring 0- 4 bar range
	RS/1701/28	Spring 0- 8 bar range
	RS/1701/31	Spring 0- 12 bar range
6	RK1701A/012	Diaphragm assembly
	RK1701A/024	Gruppo memb. compl. senza relieving
7	RS/1701/11	Rear tab
8	RK1701A/020	Plug c/w seal G1/8
9	RS/1701/10	Front tab
10	RK1701A/025	Poppet c/w spring and seal
11	RS/OR 2125	Seal
12	RS/1701/13	Porous filter element 20μ
	RS/1701/52	Porous filter element 5μ
	RS/1701/53	Porous filter element 50μ
13	RS/1701/7	Bowl protection
14	RK1701A/013	Filter bowl c/w drain valve
15	RK1701A/018	Filter bowl c/w automatic drain
A	RK1701A/014	Filter group assembly 20μ
	RK1701A/021	Filter group assembly 5μ
	RK1701A/022	Filter group assembly 50μ

