

# PRESA DI FORZA A COMANDO PNEUMATICO "POWER-TRUCK"

**PNEUMATIC CLUTCH POWER TAKE-OFF**

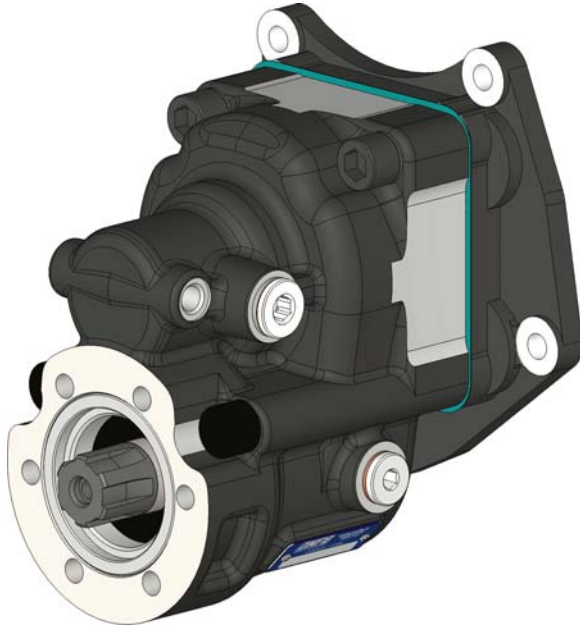
**CODICE PTO**  
PTO CODE

**16-41/42**

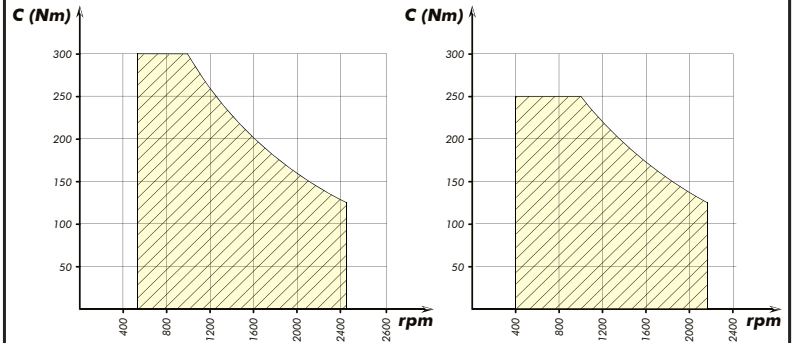
**CAMBIO**  
GEARBOX

**MERCEDES**  
**G 3-40 ... G 3-60**

Codice fascicolo: 997-400-00030



## DIAGRAMMA DI UTILIZZO WORKING CONDITION

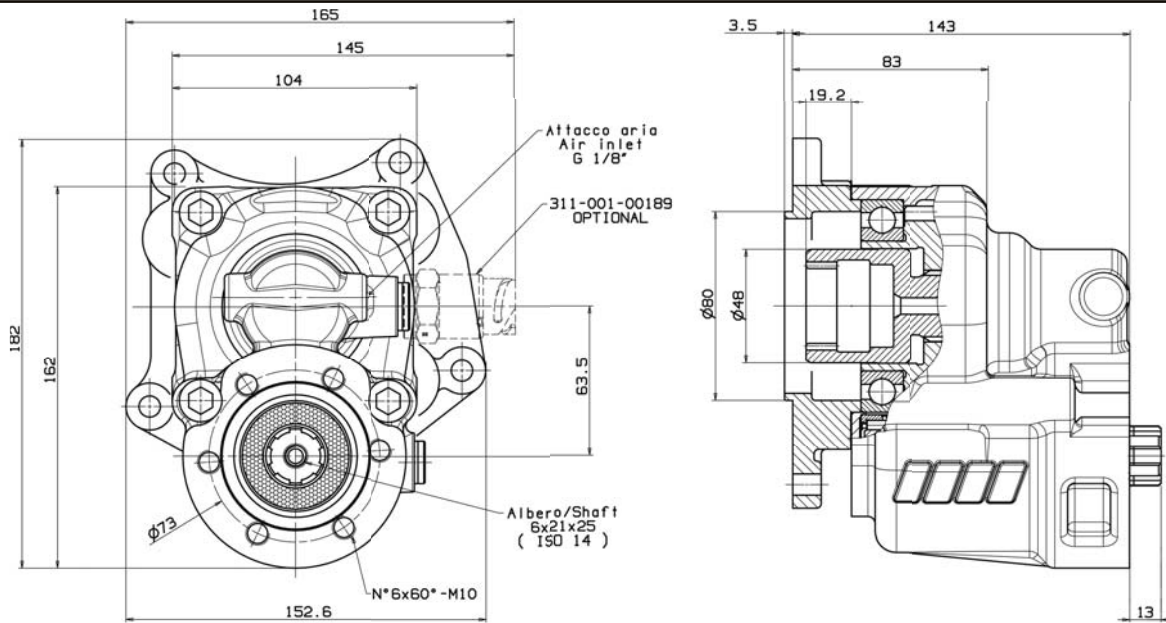


016-041-00132

016-042-00131

Data: Venerdì 12 Luglio 2013

Codice foglio: 997-216-04113 Rev: AA



Tipo cambio Gearbox	Codice PTO PTO code	Versione Version	Rapporto interno Internal ratio	Giri pto a 1000 giri motore Pto ratio@1000 eng.rpm	Coppia massima Max torque	Lato montaggio Mounting side	Uscita Output	Rotazione Rotation	Kit di montaggio Mounting kit	Peso Weight
				rpm	Nm					Kg
<b>MERCEDES</b> <b>G 3-40...</b> <b>G 3-60</b>	<b>16-41-132</b>	13	1:1,81	Vedi indice See index	<b>300</b>	Poster. Rear	Poster. Rear	Ant. Acw	154-3-2063	9,2
	<b>16-42-131</b>		1:1,53		<b>250</b>					

pag.27

**OMFB**  
HYDRAULIC COMPONENTS

O.M.F.B. S.p.A. Hydraulic Components  
We reserve the right to make any changes without notice.  
Edition 2003.02 No reproduction, however partial, is permitted.  
Via Cave, 7/9 25050 Provaglio d'Iseo (Brescia) Italy Tel.: +39.030.9830611  
Fax: +39.030.9839207-208 Internet:www.omfb.it e-mail:info@omfb.it

**COMPANY WITH  
QUALITY SYSTEM  
CERTIFIED BY DNV GL  
= ISO 9001 =**