

**CARATTERISTICHE**

Luce nominale  
 Portata min/max  
 Pressione max. di picco  
 Pressione max. di taratura  
 Rapporto di pilotaggio standard  
 Temperatura ambiente  
 Temperatura olio  
 Filtraggio consigliato  
 Coppia di serraggio  
 Peso

**DN 6**  
**1/25 l/min - 0.26/6.6 GPM**  
**350 bar - 5075 PSI**  
**350 bar - 5075 PSI**  
**4 : 1**  
**-30°C + 50°C**  
**-30°C + 80°C**  
**30 micron**  
**0.300 Kg**

**PERFORMANCE**

Rated size  
 Min/max flow-rate  
 Max peak pressure  
 Max setting pressure  
 Standard pilot ratio  
 Room temperature  
 Oil temperature  
 Recommended filtration  
 Tightening torque  
 Weight

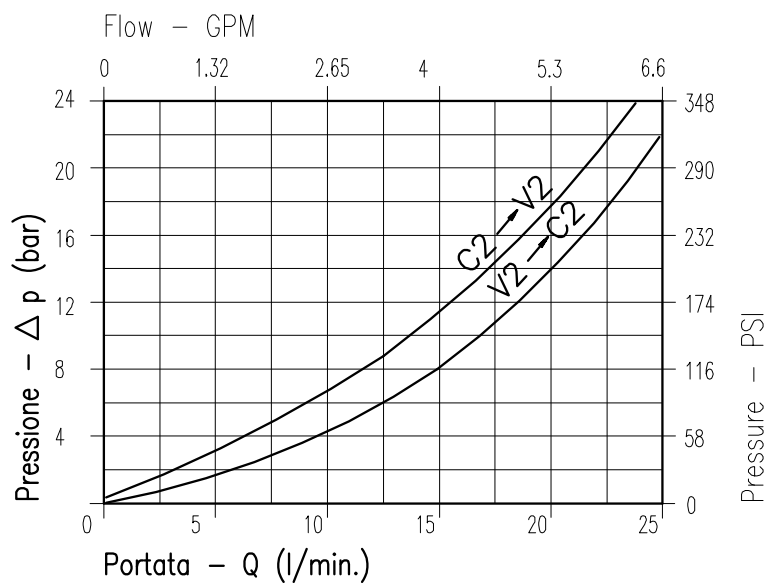
**NOTE:**

La taratura deve essere **1.3** volte maggiore della pressione indotta dal carico.

Valve should be set at **1.3** times load induced pressure.

**ESEMPIO/EXAMPLE:**

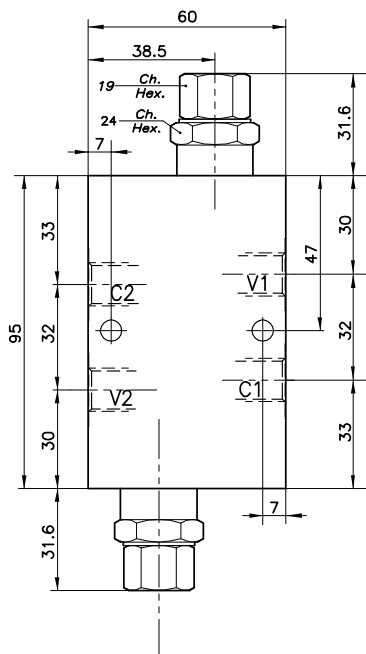
Pressione di lavoro max:  
 Max working pressure:  
**350 bar / 1.3 = 270 bar**



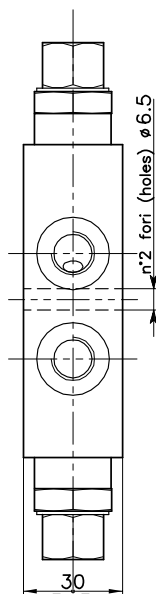
Viscosità olio 46 cSt a 50°C  
 Oil viscosity 46 cSt at 50°C

**DOUBLE COUNTERBALANCE  
VALVE WITH IN LINE BODY**

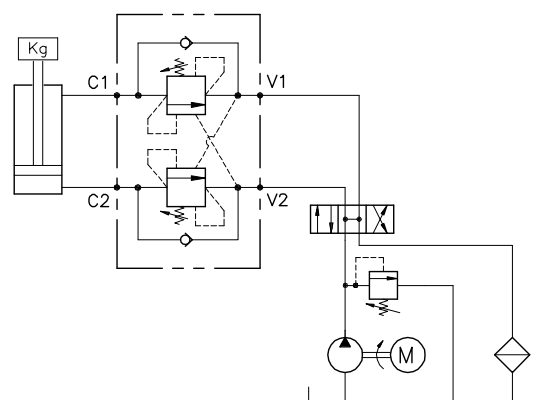
REGOLAZIONE  
ADJUSTMENT



Grano  
Dowel  
(X)



**ESEMPIO TIPICO DI CIRCUITO  
TYPICAL CIRCUIT EXAMPLE**



**DIMENSIONI  
DIMENSIONS**

Campo taratura Setting range	Attacchi Port size V1-C1 V2-C2 GAS (BSPP)	Luce nominale Rated size	Portata max Max flow-rate
626	1/4"	DN 6	l/min - GPM 25-6

**CODICE DI ORDINAZIONE  
HOW TO ORDER**

001 . 626 . 0 X 0 . A

Campo taratura / Setting range

626

Campo taratura 60÷350 bar (molla colore verde)  
Setting range 60÷350 bar (green spring)

Taratura standard (Q=5 l/1')  
Std. bar setting Q=5 l/1')

250 bar

Incr. press. - bar giro/vite  
Pressure rise - turn of screw  
(75)

Rapporto di pilotaggio  
Pilot ratios

O 4 : 1  
F 7 : 1

Regolazione  
Adjustment

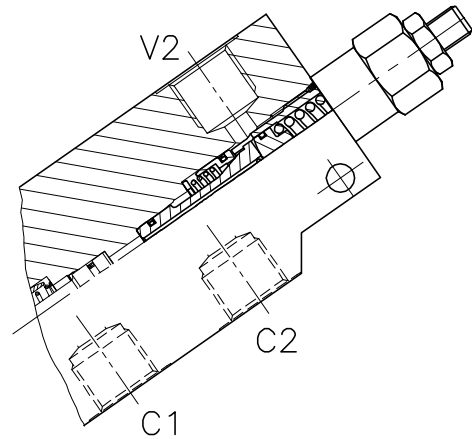
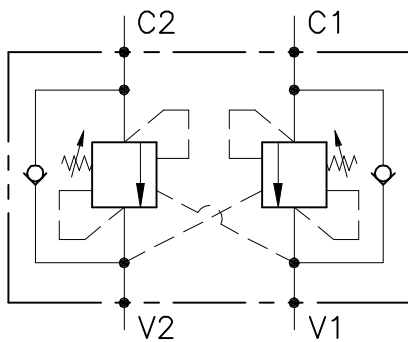
X Grano - Dowel

Collettore  
Body

A Acciaio zincato  
Zinc plated steel

626

Collettore possibile in AL togliendo "A"  
Available aluminium body without "A"



## CARATTERISTICHE

Luce nominale  
 Portata min/max  
 Pressione max. di picco  
 Pressione max. di taratura  
 Rapporto di pilotaggio standard  
 Temperatura ambiente  
 Temperatura olio  
 Filtraggio consigliato  
 Coppia di serraggio  
 Peso

**DN 6/8/10**  
**1/60 l/min - 0.26/15.9 GPM**  
**350 bar - 5075 PSI**  
**350 bar - 5075 PSI**  
**4.25 : 1**  
**-30°C + 50°C**  
**-30°C + 80°C**  
**30 micron**

## PERFORMANCE

Rated size  
 Min/max flow-rate  
 Max peak pressure  
 Max setting pressure  
 Standard pilot ratio  
 Room temperature  
 Oil temperature  
 Recommended filtration  
 Tightening torque  
 Weight

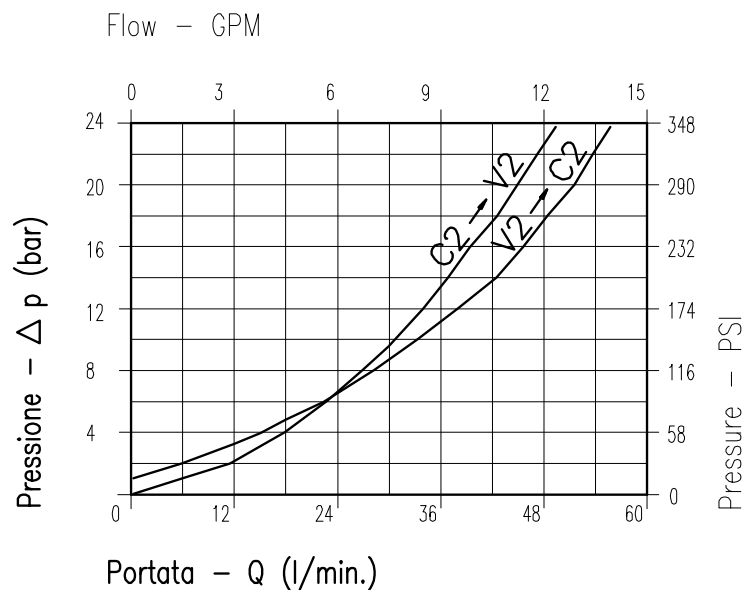
### NOTE:

La taratura deve essere **1.3** volte maggiore della pressione indotta dal carico.

Valve should be set at **1.3** times load induced pressure.

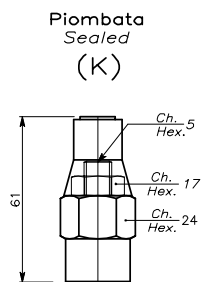
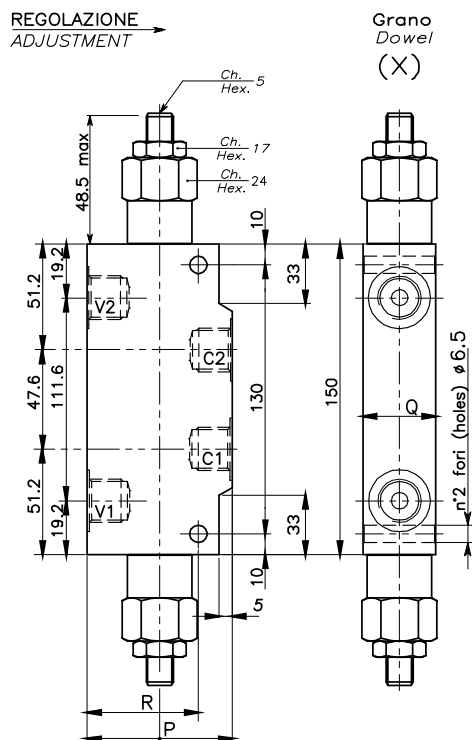
### ESEMPIO/EXAMPLE:

Pressione di lavoro max:  
 Max working pressure:  
**350 bar / 1.3 = 270 bar**

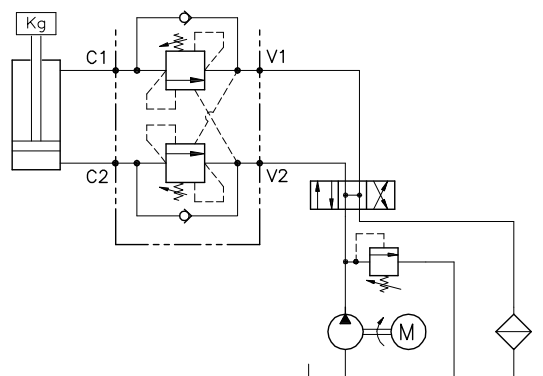


**Viscosità olio 46 cSt a 50°C**  
**Oil viscosity 46 cSt at 50°C**

**DOUBLE COUNTERBALANCE  
VALVE WITH IN LINE BODY**



**ESEMPIO TIPICO DI CIRCUITO  
TYPICAL CIRCUIT EXAMPLE**



**DIMENSIONI  
DIMENSIONS**

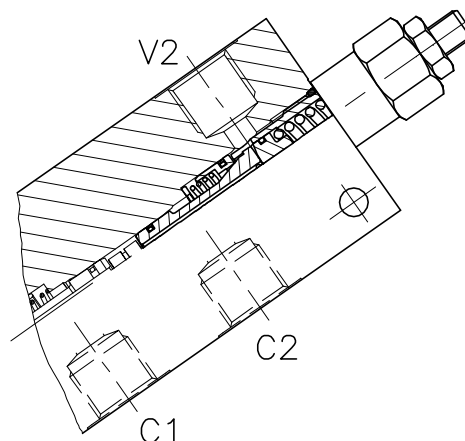
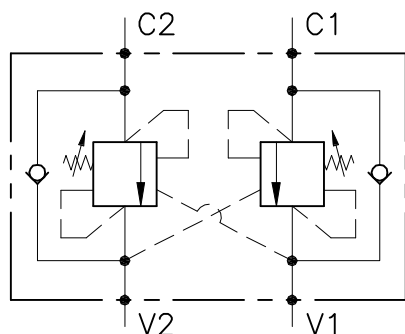
Campo taratura Setting range		P	Q	R	Attacchi Port size V2-C2 V1-C1 GAS (BSPP)	Luce nominale Rated size DN	Portata max Max flow-rate l/min - GPM
079	078	60	30	47,5	1/4"	6	20-5
081	080	60	30	47,5	3/8"	8	40-10
083	082	70	35	55	1/2"	10	60-15

**CODICE DI ORDINAZIONE  
HOW TO ORDER**

**N01 . 079 . 0 X 0 . A**

Campo taratura / Setting range	
079	078
081	080
083	082
Campo taratura 30÷220 bar (molla colore verde) Setting range 30÷220 bar (green spring)	Campo taratura 60÷350 bar (molla colore giallo) Setting range 60÷350 bar (yellow spring)
Taratura standard (Q=5 l/1') Std. bar setting (Q=5 l/1')	Taratura standard (Q=5 l/1') Std. bar setting (Q=5 l/1')
Incr. press. - bar giro/vite (50)	Incr. press. - bar giro/vite (90)
180 bar	250 bar

Rapporto di pilotaggio Pilot ratios	Regolazione Adjustment	Collettore Body
O 4,25 : 1 D 8 : 1	X Grano - Dowel K Piombata - Sealed	A Acciaio zincato Zinc plated steel



### CARATTERISTICHE

Luce nominale	<b>DN 6/8/10</b>
Portata min/max	<b>1/60 l/min - 0.26/15.9 GPM</b>
Pressione max. di picco	<b>350 bar - 5075 PSI</b>
Pressione max. di taratura	<b>350 bar - 5075 PSI</b>
Rapporto di pilotaggio standard	<b>4.25 : 1</b>
Temperatura ambiente	<b>-30°C + 50°C</b>
Temperatura olio	<b>-30°C + 80°C</b>
Filtraggio consigliato	<b>30 micron</b>
Coppia di serraggio	
Peso	

### PERFORMANCE

Rated size
Min/max flow-rate
Max peak pressure
Max setting pressure
Standard pilot ratio
Room temperature
Oil temperature
Recommended filtration
Tightening torque
Weight

#### NOTE:

La taratura deve essere **1.3** volte maggiore della pressione indotta dal carico.

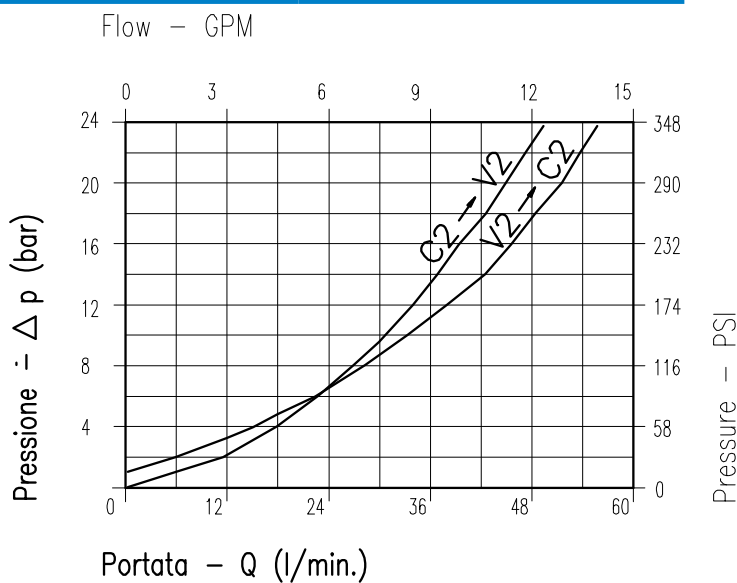
Valve should be set at **1.3** times load induced pressure.

#### ESEMPIO/EXAMPLE:

Pressione di lavoro max:

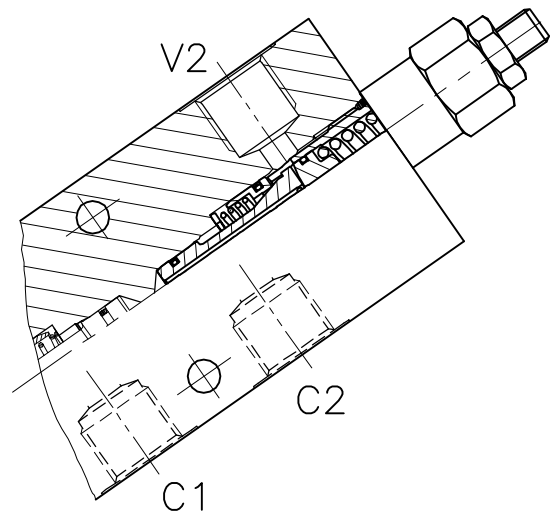
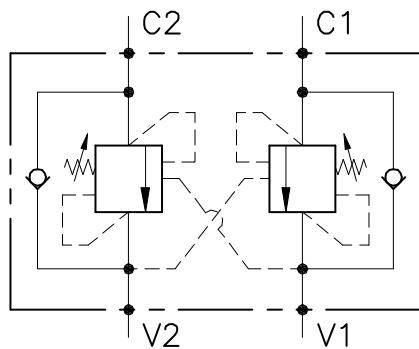
Max working pressure:

**350 bar / 1.3 = 270 bar**



Viscosità olio 46 cSt a 50°C  
Oil viscosity 46 cSt at 50°C





## CARATTERISTICHE

Luce nominale	<b>DN 8/10</b>
Portata min/max	<b>1/60 l/min - 0.26/15.9 GPM</b>
Pressione max. di picco	<b>350 bar - 5075 PSI</b>
Pressione max. di taratura	<b>350 bar - 5075 PSI</b>
Rapporto di pilotaggio standard	<b>4.25 : 1</b>
Temperatura ambiente	<b>-30°C + 50°C</b>
Temperatura olio	<b>-30°C + 80°C</b>
Filtraggio consigliato	<b>30 micron</b>
Peso	<b>2.586 Kg</b>

## PERFORMANCE

Rated size
Min/max flow-rate
Max peak pressure
Max setting pressure
Standard pilot ratio
Room temperature
Oil temperature
Recommended filtration
Weight

### NOTE:

La taratura deve essere **1.3** volte maggiore della pressione indotta dal carico.

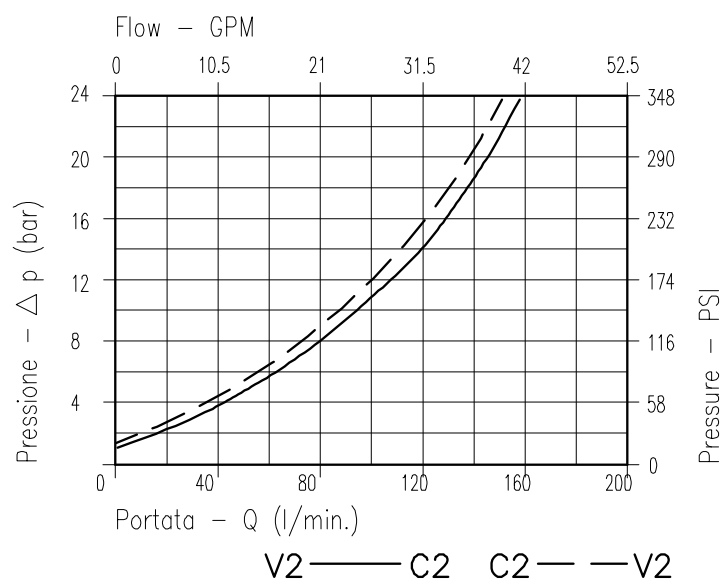
Valve should be set at **1.3** times load induced pressure.

### ESEMPIO/EXAMPLE:

Pressione di lavoro max:

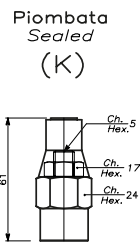
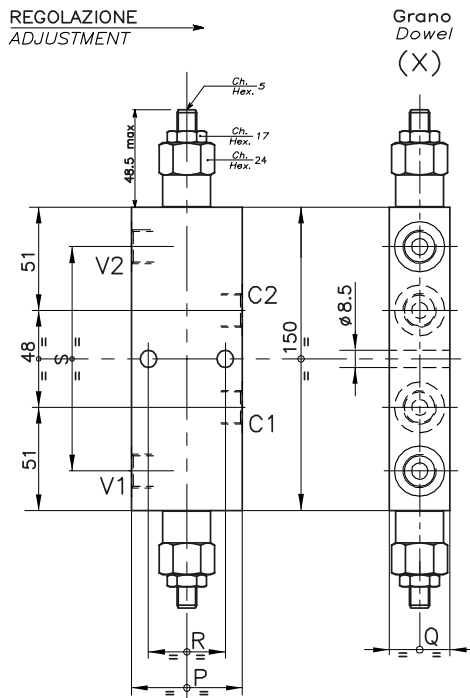
Max working pressure:

**350 bar / 1.3 = 270 bar**

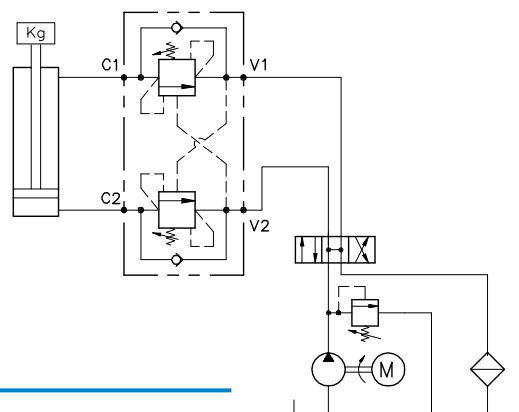


**Viscosità olio 46 cSt a 50°C**  
**Oil viscosity 46 cSt at 50°C**

**DOUBLE COUNTERBALANCE  
VALVE WITH IN LINE BODY**



**ESEMPIO TIPICO DI CIRCUITO  
TYPICAL CIRCUIT EXAMPLE**



**DIMENSIONI  
DIMENSIONS**

Campo taratura Setting range		P	Q	R	S	Attacchi Port size V2-C2 V1-C1 GAS (BSPP)	Luce nominale Rated size DN	Portata max Max flow-rate l/min - GPM
697	660	55	30	38	109,6	3/8"	8	40-10
696	695	65	35	43	112	1/2"	10	60-15

**CODICE DI ORDINAZIONE  
HOW TO ORDER**

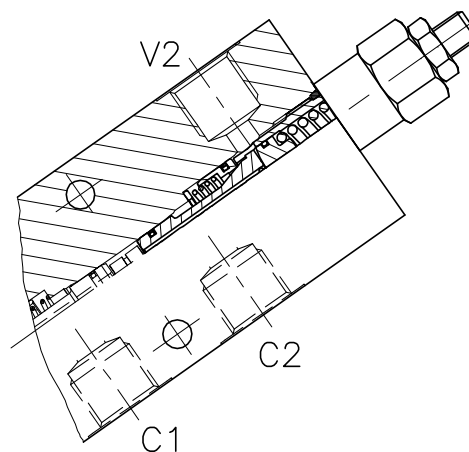
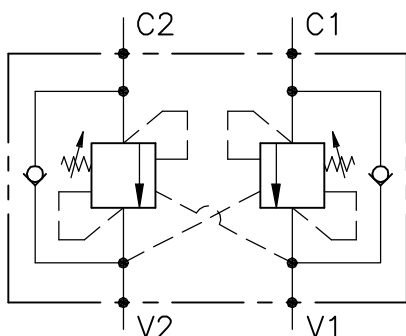
**N01 . 697 . 0 X 0 . A**

Campo taratura / Setting range			
697		660	
696		695	
Campo taratura 30÷220 bar (molla colore verde)		Campo taratura 60÷350 bar (molla colore giallo)	
Setting range 30÷220 bar (green spring)		Setting range 60÷350 bar (yellow spring)	
Taratura standard (Q=5 l/1')	Incr. press. - bar giro/vite	Taratura standard (Q=5 l/1')	Incr. press. - bar giro/vite
Std. bar setting (Q=5 l/1')	Pressure rise - turn of screw	Std. bar setting (Q=5 l/1')	Pressure rise - turn of screw
<b>180 bar</b>	<b>(50)</b>	<b>250 bar</b>	<b>(90)</b>

Rapporto di pilotaggio Pilot ratios	Regolazione Adjustment	Collettore Body
O 4.25 : 1	X Grano - Dowel	A Acciaio zincato Zinc plated steel
D 8 : 1	K Piombata - Sealed	

660	
697	Collettore possibile in AL togliendo "A"
695	Available aluminium body without "A"
696	





### CARATTERISTICHE

Luce nominale	<b>DN 8/10</b>
Portata min/max	<b>5/60 l/min - 0.26/15.9 GPM</b>
Pressione max. di picco	<b>350 bar - 5075 PSI</b>
Pressione max. di taratura	<b>350 bar - 5075 PSI</b>
Rapporto di pilotaggio standard	<b>4.25 : 1</b>
Temperatura ambiente	<b>-30°C + 50°C</b>
Temperatura olio	<b>-30°C + 80°C</b>
Filtraggio consigliato	<b>30 micron</b>
Peso	<b>3/8" Kg</b>
Peso	<b>1/2" Kg</b>

### PERFORMANCE

Rated size
Min/max flow-rate
Max peak pressure
Max setting pressure
Standard pilot ratio
Room temperature
Oil temperature
Recommended filtration
Weight
Weight

#### NOTE:

La taratura deve essere **1.3** volte maggiore della pressione indotta dal carico.

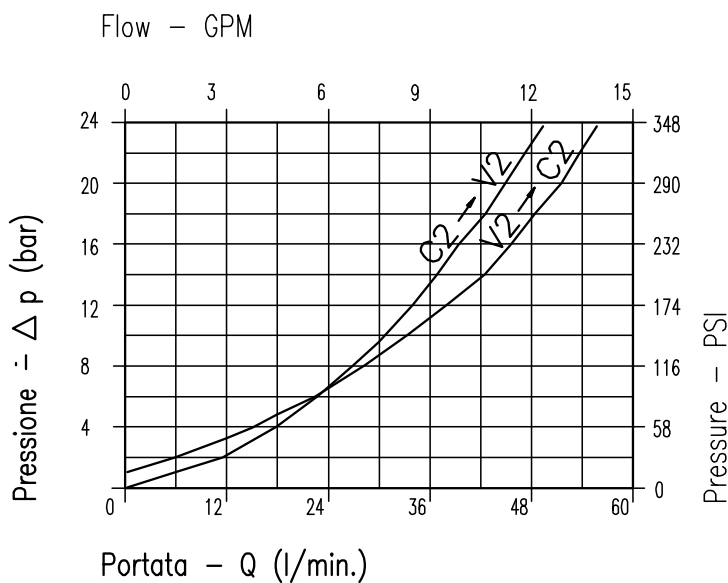
Valve should be set at **1.3** times load induced pressure.

#### ESEMPIO/EXAMPLE:

Pressione di lavoro max:

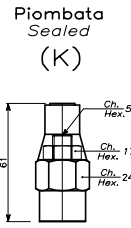
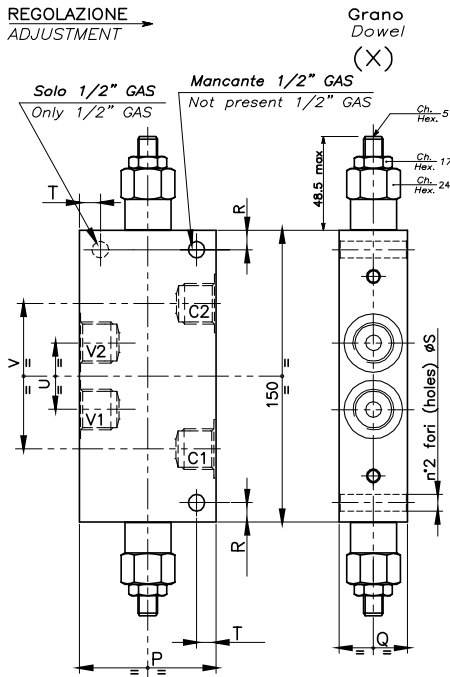
Max working pressure:

**350 bar / 1.3 = 270 bar**

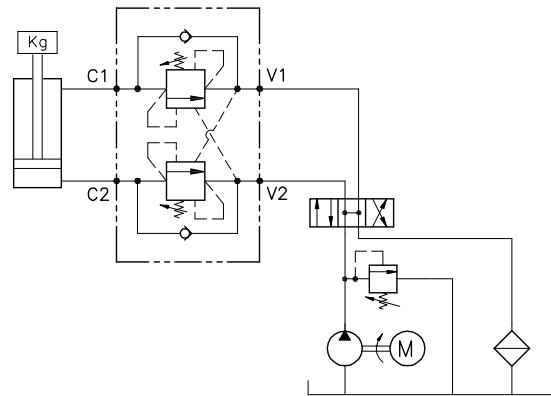


Viscosità olio 46 cSt a 50°C  
Oil viscosity 46 cSt at 50°C

**DOUBLE COUNTERBALANCE  
VALVE WITH IN LINE BODY**



**ESEMPIO TIPICO DI CIRCUITO  
TYPICAL CIRCUIT EXAMPLE**



**DIMENSIONI  
DIMENSIONS**

Campo taratura Setting range	P	Q	R	S	T	U	V	Attacchi Port size V2-C2 GAS (BSPP)	Portata max Max flow-rate l/min - GPM
651	60	30	23	6.5	14	34	69	3/8"	40-10
115	70	35	12.5	8.5	8	36	80	1/2"	60-15

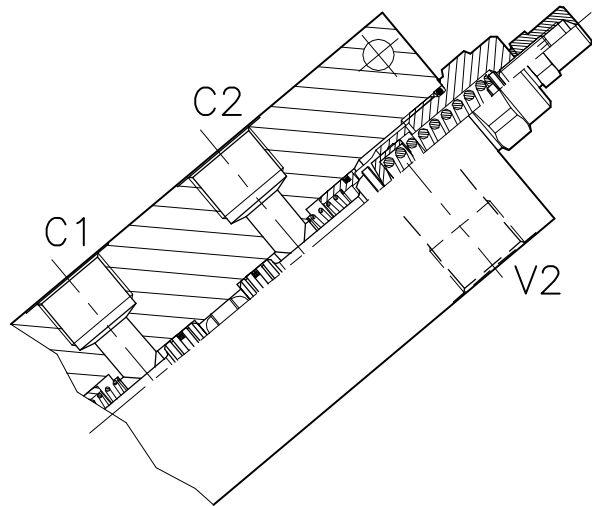
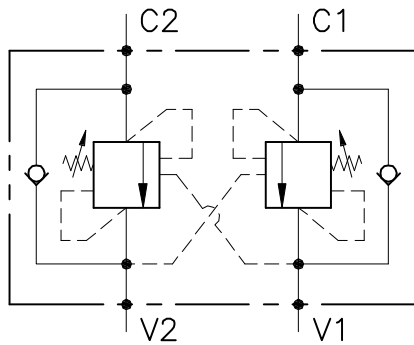
**CODICE DI ORDINAZIONE  
HOW TO ORDER**

**N01 . 651 . 0 X 0 . A**

Campo taratura / Setting range	
651	
115	
Campo taratura 60÷350 bar (molla colore giallo) Setting range 60÷350 bar (yellow spring)	
Taratura standard (Q=5 l/1') Std. bar setting Q=5 l/1')	Incr. press. - bar giro/vite Pressure rise - turn of screw
<b>250 bar</b>	<b>(90)</b>

Rapporto di pilotaggio Pilot ratios	Regolazione Adjustment	Collettore Body
O 4,25 : 1 D 8 : 1	X Grano - Dowel K Piombata - Sealed	A Acciaio zincato Zinc plated steel

**115** Collettore possibile in AL togliendo "A"  
Available aluminium body without "A"



**CARATTERISTICHE**

Luce nominale  
Portata min/max  
Pressione max. di picco  
Pressione max. di taratura  
Rapporto di pilotaggio standard  
Temperatura ambiente  
Temperatura olio  
Filtraggio consigliato  
Coppia di serraggio  
Peso

**DN 12/14**  
**1/160 l/min - 0.26/42.3 GPM**  
**350 bar - 5075 PSI**  
**350 bar - 5075 PSI**  
**6.2 : 1**  
**-30°C + 50°C**  
**-30°C + 80°C**  
**30 micron**

**PERFORMANCE**

Rated size  
Min/max flow-rate  
Max peak pressure  
Max setting pressure  
Standard pilot ratio  
Room temperature  
Oil temperature  
Recommended filtration  
Tightening torque  
Weight

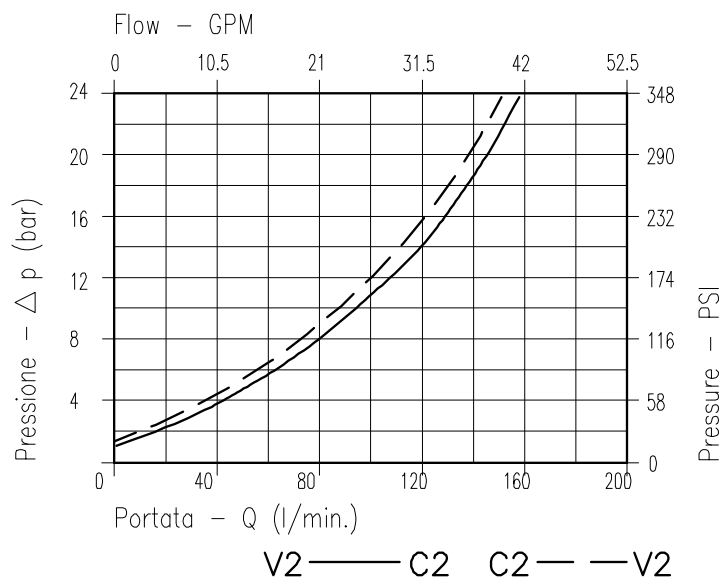
**NOTE:**

La taratura deve essere **1.3** volte maggiore della pressione indotta dal carico.

Valve should be set at **1.3** times load induced pressure.

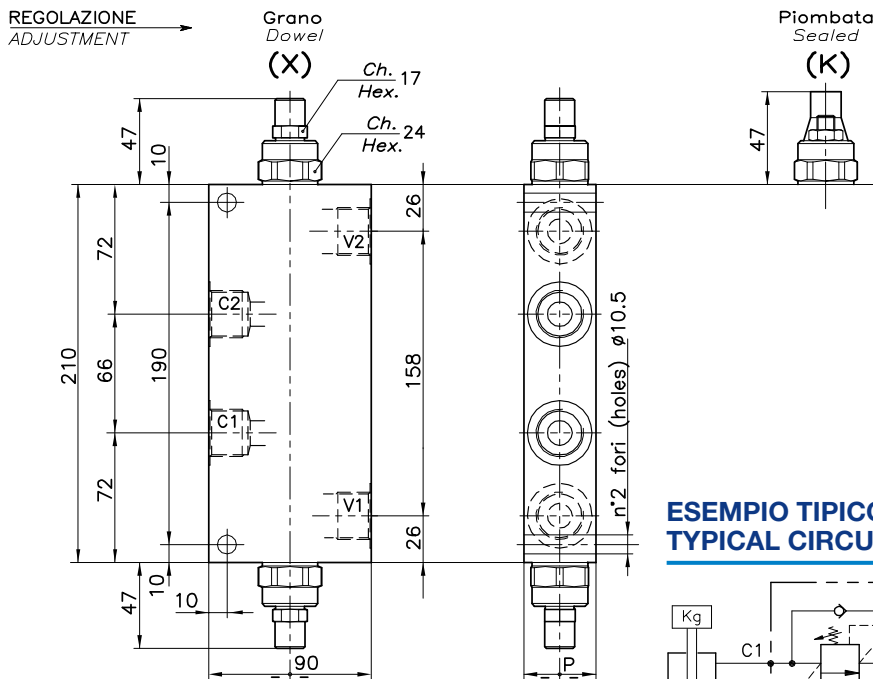
**ESEMPIO/EXAMPLE:**

Pressione di lavoro max:  
Max working pressure:  
**350 bar / 1.3 = 270 bar**

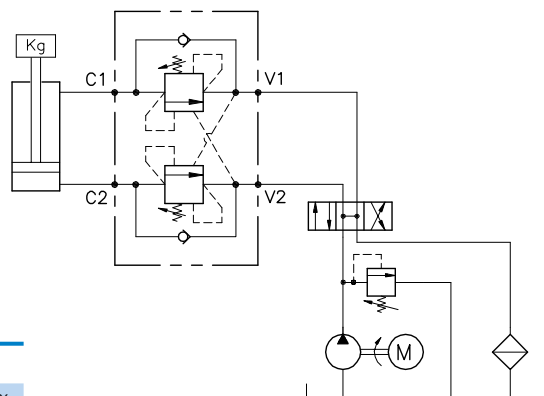


**Viscosità olio 46 cSt a 50°C**  
**Oil viscosity 46 cSt at 50°C**

**DOUBLE COUNTERBALANCE  
VALVE WITH IN LINE BODY**



**ESEMPIO TIPICO DI CIRCUITO  
TYPICAL CIRCUIT EXAMPLE**



**DIMENSIONI  
DIMENSIONS**

Campo taratura Setting range	P	Attacchi Port size V1-C1 V2-C2 GAS (BSPP)	Luce nominale Rated size	Portata max Max flow-rate
			DN	l/min - GPM
453	40	3/4"	12	120-31
454	50	1"	14	160-42

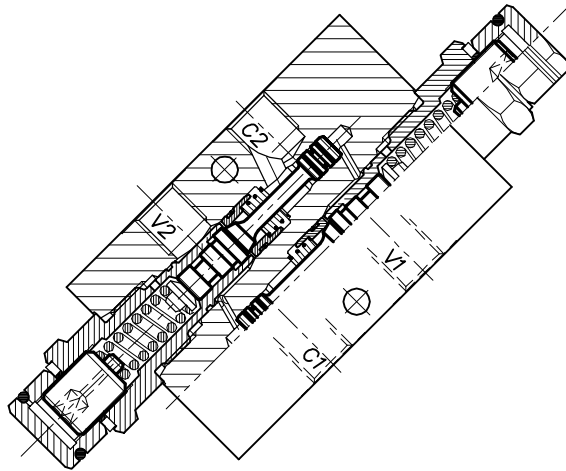
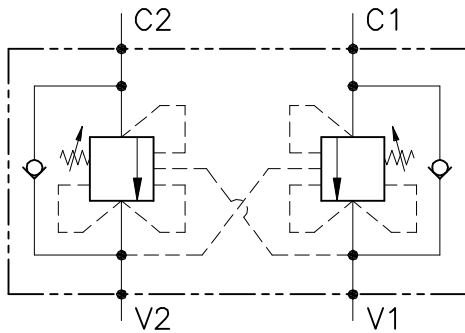
**CODICE DI ORDINAZIONE  
HOW TO ORDER**

001 . 453 . 0 X 0 . A

Campo taratura / Setting range	
453	
454	
Campo taratura 60÷350 bar (molla colore giallo) Setting range 60÷350 bar (yellow spring)	
Taratura standard (Q=5 l/1') Std. bar setting Q=5 l/1')	Incr. press. - bar giro/vite Pressure rise - turn of screw
<b>250 bar</b>	<b>(125)</b>

Rapporto di pilotaggio Pilot ratios	Regolazione Adjustment	Collettore Body
O 6.20 : 1	X Grano - Dowel	A Acciaio zincato Zinc plated steel
G 4 : 1	K Piombata - Sealed	

453 Collettore possibile in AL togliendo "A"  
Available aluminium body without "A"



**CARATTERISTICHE**

Luce nominale  
Portata min/max  
Pressione max. di picco  
Pressione max. di taratura  
Rapporto di pilotaggio standard  
Temperatura ambiente  
Temperatura olio  
Filtraggio consigliato  
Coppia di serraggio  
Peso

**DN 6**  
**1/25 l/min - 0.26/6.6 GPM**  
**350 bar - 5075 PSI**  
**350 bar - 5075 PSI**  
**4 : 1**  
**-30°C + 50°C**  
**-30°C + 80°C**  
**30 micron**  
**0.300 Kg**

**PERFORMANCE**

Rated size  
Min/max flow-rate  
Max peak pressure  
Max setting pressure  
Standard pilot ratio  
Room temperature  
Oil temperature  
Recommended filtration  
Tightening torque  
Weight

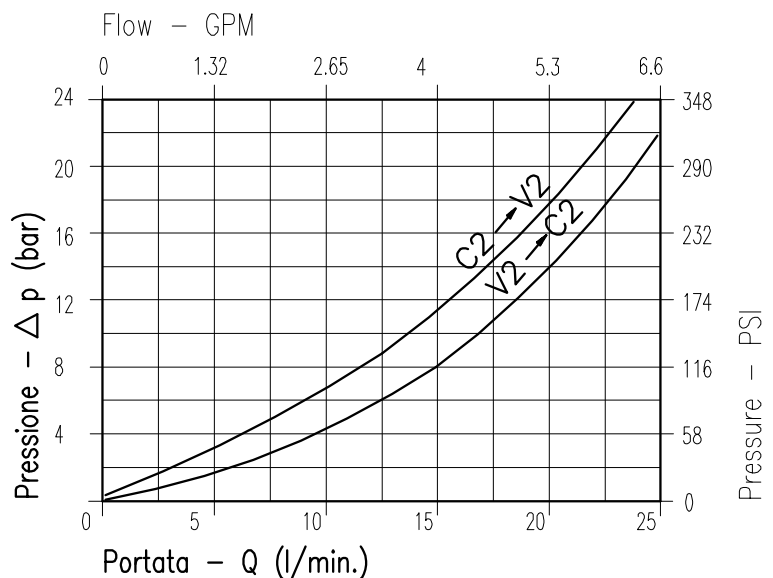
**NOTE:**

La taratura deve essere **1.3** volte maggiore della pressione indotta dal carico.

Valve should be set at **1.3** times load induced pressure.

**ESEMPIO/EXAMPLE:**

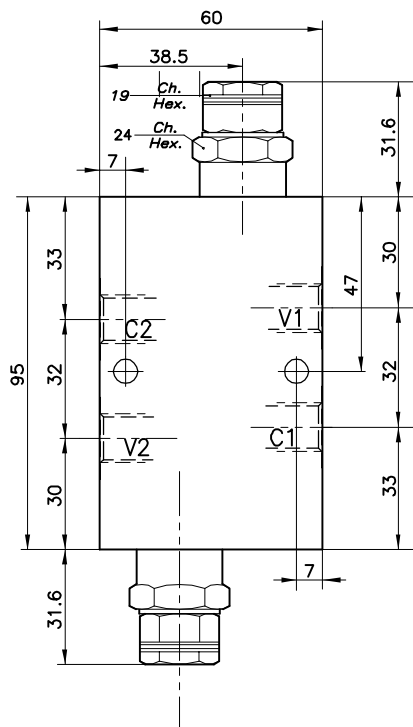
Pressione di lavoro max:  
Max working pressure:  
**350 bar / 1.3 = 270 bar**



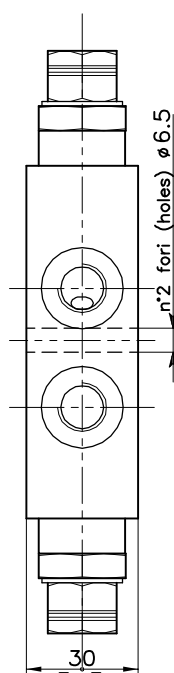
Viscosità olio 46 cSt a 50°C  
Oil viscosity 46 cSt at 50°C

DOUBLE COUNTERBALANCE  
VALVE FOR CLOSED CENTRE SPOOL WITH IN LINE BODY

REGOLAZIONE  
ADJUSTMENT



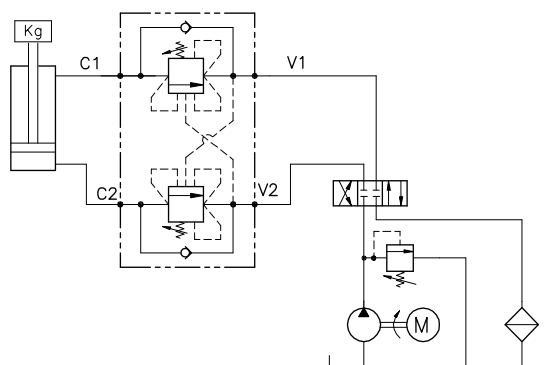
Grano  
Dowel  
(X)



DIMENSIONI  
DIMENSIONS

Campo taratura Setting range	Attacchi Port size V1-C1 V2-C2 GAS (BSP)	Luce nominale Rated size	Portata max Max flow-rate
669	1/4"	6	l/min - GPM 25-6

ESEMPIO TIPICO DI CIRCUITO  
TYPICAL CIRCUIT EXAMPLE



CODICE DI ORDINAZIONE  
HOW TO ORDER

001 . 669 . 0 X 0 . A

Campo taratura / Setting range

669

Campo taratura 60÷350 bar (molla colore giallo)  
Setting range 60÷350 bar (yellow spring)

Taratura standard (Q=5 l/1')  
Std. bar setting Q=5 l/1')

250 bar

Incr. press. - bar giro/vite  
Pressure rise - turn of screw

(75)

Rapporto di pilotaggio  
Pilot ratios

O 4 : 1  
F 7 : 1

Regolazione  
Adjustment

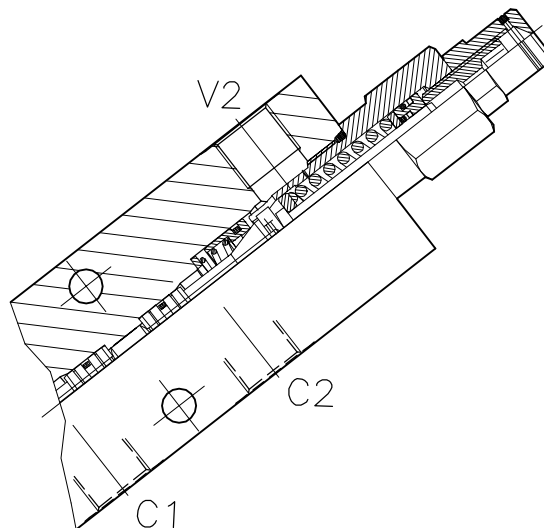
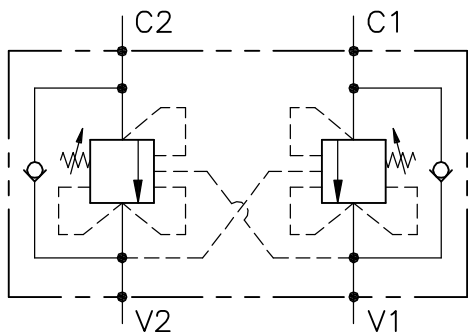
X Grano - Dowel

Collettore  
Body

A Acciaio zincato  
Zinc plated steel

669

Collettore possibile in AL togliendo "A"  
Available aluminium body without "A"



**CARATTERISTICHE**

Luce nominale	<b>DN 6/8/10</b>
Portata min/max	<b>1/60 l/min - 0.26/15.9 GPM</b>
Pressione max. di picco	<b>350 bar - 5075 PSI</b>
Pressione max. di taratura	<b>350 bar - 5075 PSI</b>
Rapporto di pilotaggio standard	<b>4.25 : 1</b>
Temperatura ambiente	<b>-30°C + 50°C</b>
Temperatura olio	<b>-30°C + 80°C</b>
Filtraggio consigliato	<b>30 micron</b>
Coppia di serraggio	
Peso	<b>0.300 Kg</b>

**PERFORMANCE**

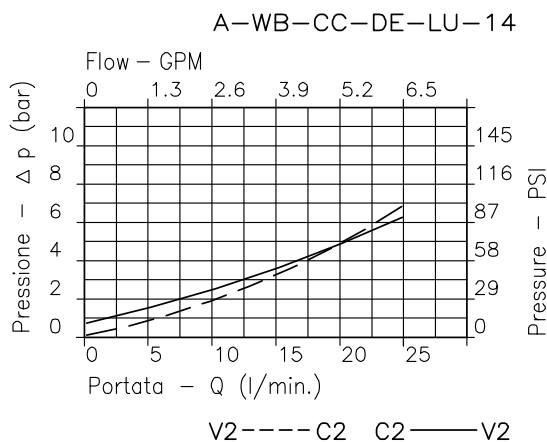
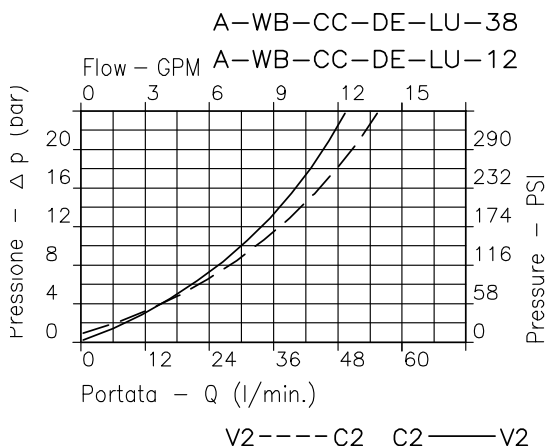
Rated size
Min/max flow-rate
Max peak pressure
Max setting pressure
Standard pilot ratio
Room temperature
Oil temperature
Recommended filtration
Tightening torque
Weight

**NOTE:**

La taratura deve essere 1.3 volte maggiore della pressione indotta dal carico. Valve should be set at 1.3 times load induced pressure.

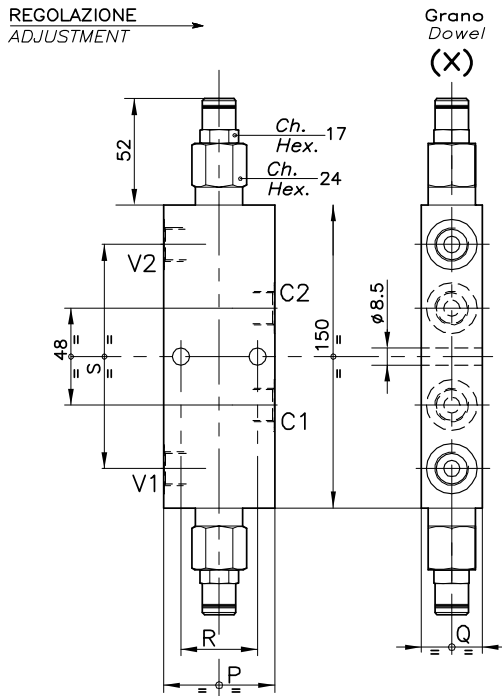
**ESEMPIO/EXAMPLE:**

Pressione di lavoro max **350 bar / 1.3 = 270 bar** Max working pressure  
 Fornitura standard valvola: corpo in acciaio. A richiesta corpo in alluminio. Steel body valves as standard, aluminium body on request

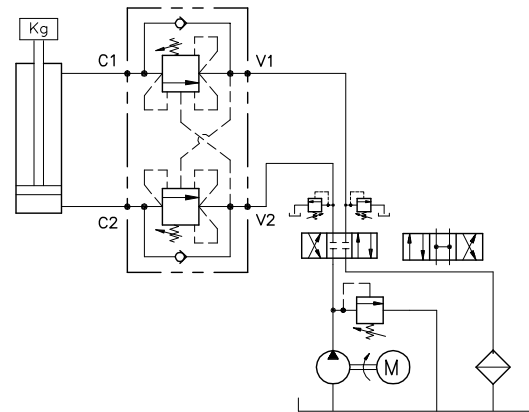


Viscosità olio 46 cSt a 50°C - Oil viscosity 46 cSt at 50°C

DOUBLE COUNTERBALANCE  
VALVE FOR CLOSED CENTRE SPOOL WITH IN LINE BODY



ESEMPIO TIPICO DI CIRCUITO  
TYPICAL CIRCUIT EXAMPLE



DIMENSIONI  
DIMENSIONS

Campo taratura Setting range		P	Q	R	S	Attacchi Port size V2-C2 V1-C1 GAS (BSPP)	Luce nominale Rated size DN	Portata max Max flow-rate l/min - GPM
460	459	55	30	38	109.6	3/8"	8	40-10
462	461	65	35	43	112	1/2"	10	60-15

CODICE DI ORDINAZIONE  
HOW TO ORDER

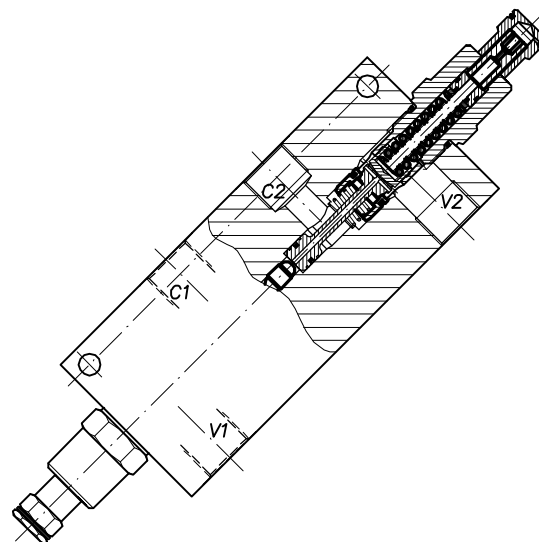
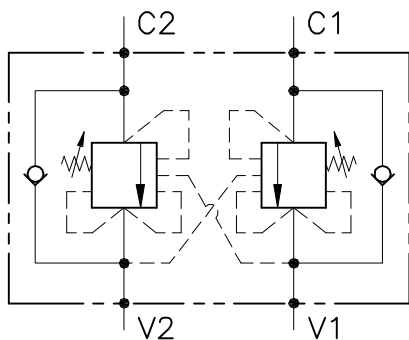
001 . 460 . 0 X 0 . A

Campo taratura / Setting range			
460		459	
462		461	
Campo taratura 30÷220 bar (molla colore verde)		Campo taratura 60÷350 bar (molla colore rosso)	
Setting range 30÷220 bar (green spring)		Setting range 60÷350 bar (red spring)	
Taratura standard (Q=5 l/1')	Incr. press. - bar giro/vite	Taratura standard (Q=5 l/1')	Incr. press. - bar giro/vite
Std. bar setting (Q=5 l/1')	Pressure rise - turn of screw	Std. bar setting (Q=5 l/1')	Pressure rise - turn of screw
<b>180 bar</b>	<b>(60)</b>	<b>250 bar</b>	<b>(140)</b>

Rapporto di pilotaggio Pilot ratios	Regolazione Adjustment	Collettore Body
O 4.25 : 1 D 8 : 1	X Grano - Dowel	A Acciaio zincato Zinc plated steel

461	Collettore possibile in AL togliendo "A" Available aluminium body without "A"
462	
460	
459	





**CARATTERISTICHE**

Luce nominale  
 Portata min/max  
 Pressione max. di picco  
 Pressione max. di taratura  
 Rapporto di pilotaggio standard  
 Temperatura ambiente  
 Temperatura olio  
 Filtraggio consigliato  
 Peso

**DN 12/14**  
**1/160 l/min - 0.26/42.3 GPM**  
**350 bar - 5075 PSI**  
**350 bar - 5075 PSI**  
**6.2 : 1**  
**-30°C + 50°C**  
**-30°C + 80°C**  
**30 micron**

**PERFORMANCE**

Rated size  
 Min/max flow-rate  
 Max peak pressure  
 Max setting pressure  
 Standard pilot ratio  
 Room temperature  
 Oil temperature  
 Recommended filtration  
 Weight

**NOTE:**

La taratura deve essere **1.3** volte maggiore della pressione indotta dal carico.

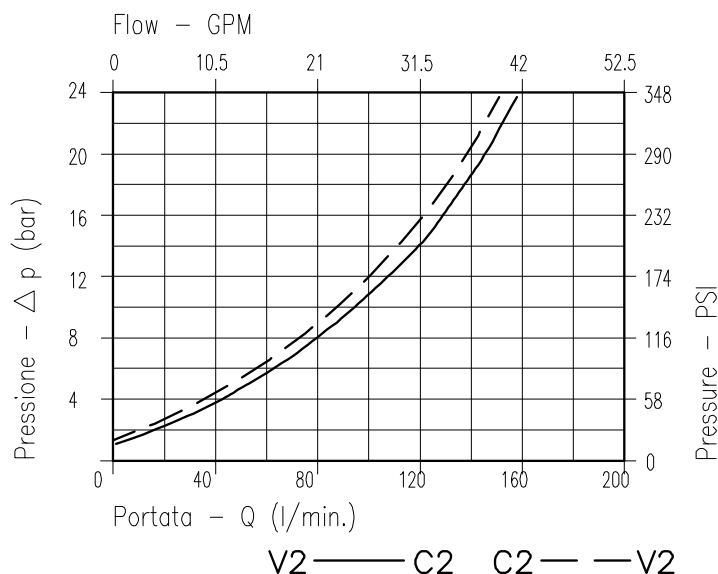
Valve should be set at **1.3** times load induced pressure.

**ESEMPIO/EXAMPLE:**

Pressione di lavoro max:

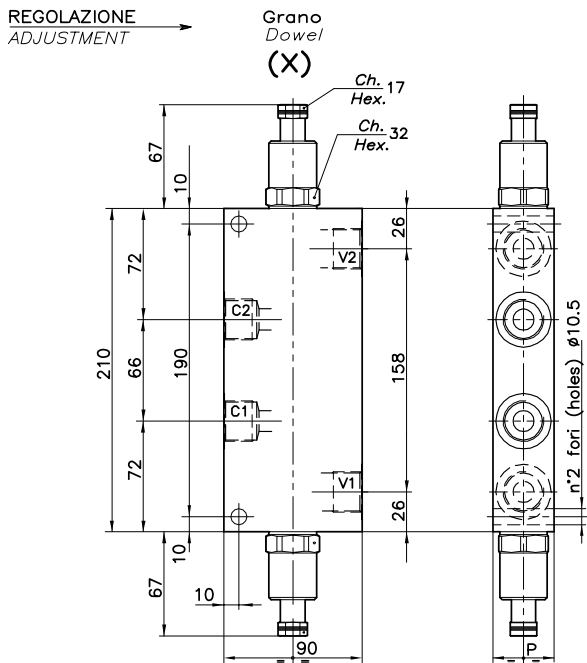
Max working pressure:

**350 bar / 1.3 = 270 bar**

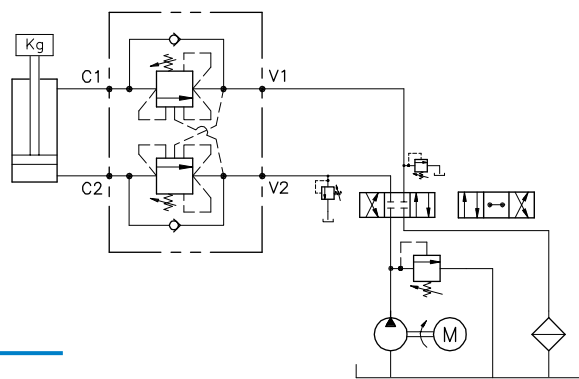


**Viscosità olio 46 cSt a 50°C**  
**Oil viscosity 46 cSt at 50°C**

DOUBLE COUNTERBALANCE  
VALVE FOR CLOSED CENTRE SPOOL WITH IN LINE BODY



ESEMPIO TIPICO DI CIRCUITO  
TYPICAL CIRCUIT EXAMPLE



DIMENSIONI  
DIMENSIONS

Campo taratura Setting range	P	Attacchi Port size V1-C1 V2-C2 GAS (BSPP)	Luce nominale Rated size DN	Portata max Max flow-rate l/min - GPM
463	40	3/4"	12	120-31
464	50	1"	14	180-47

CODICE DI ORDINAZIONE  
HOW TO ORDER

001 . 463 . 0 X 0 . A

Campo taratura / Setting range

463

464

Campo taratura 60÷350 bar (molla colore giallo)  
Setting range 60÷350 bar (yellow spring)

Taratura standard (Q=5 l/1')  
Std. bar setting Q=5 l/1')

250 bar

Incr. press. - bar giro/vite  
Pressure rise - turn of screw  
(140)

Rapporto  
di pilotaggio  
Pilot ratios

O 6.2 : 1  
G 4 : 1

Regolazione  
Adjustment

X Grano - Dowel

Collettore  
Body

A Acciaio  
zincato  
Zinc plated  
steel

463

Collettore possibile in AL togliendo "A"  
Available aluminium body without "A"