

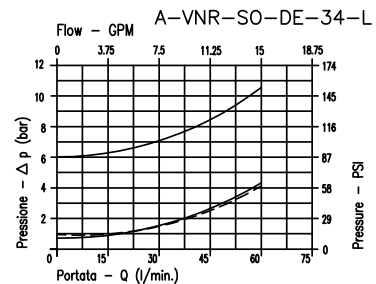
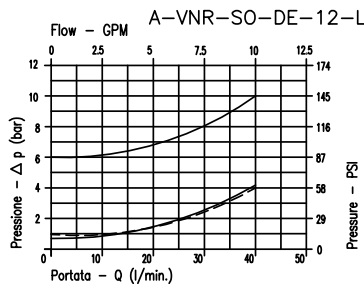
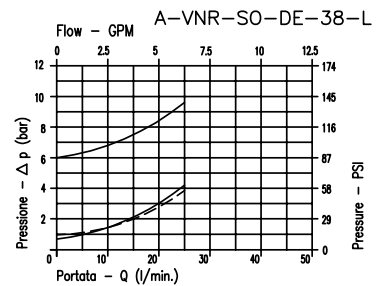
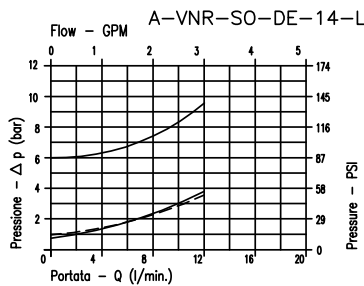
**CARATTERISTICHE**

- Luce nominale
- Portata min/max
- Pressione max. di picco
- Pressione max. di taratura
- Rapporto di pilotaggio standard
- Temperatura ambiente
- Temperatura olio
- Filtraggio consigliato
- Coppia di serraggio
- Peso

- Pagina seguente/next page**
- Pagina seguente/next page**
- 350 bar 5075 PSI**
- Pagina seguente/next page**
- Pagina seguente/next page**
- 30°C + 50°C**
- 30°C + 80°C**
- 30 + 50**
- Pagina seguente/next page**
- 0.7-0.9-0.1-2 kg**

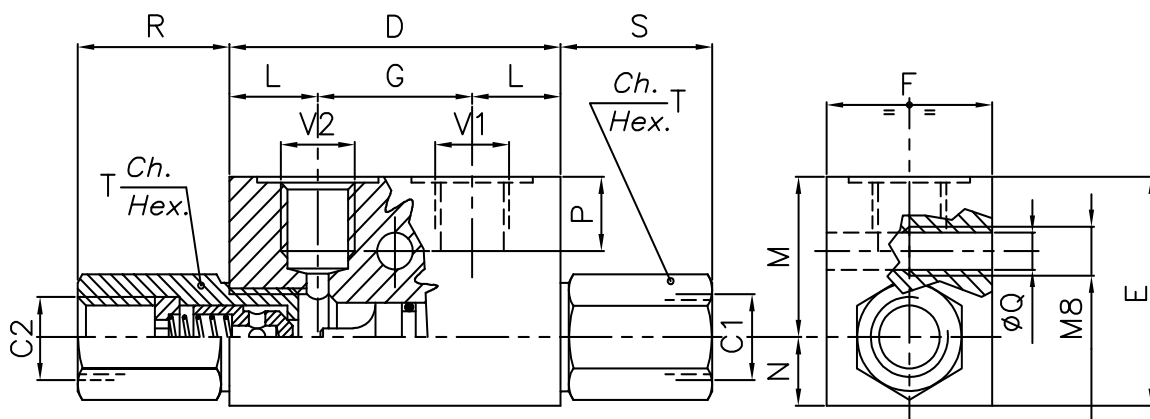
**PERFORMANCE**

- Rated size
- Min/max flow-rate
- Max peak pressure
- Max setting pressure
- Standard pilot ratio
- Room temperature
- Oil temperature
- Recommended filtration
- Tightening torque
- Weight



——— 8Bar Flusso libero (Free flow)  
 - - - - 1Bar Flusso libero (Free flow)  
 ——— Flusso pilotato (Piloted open)

Viscosita' olio 46 cSt a 50 °C  
 Oil viscosity 46 cSt at 50 °C



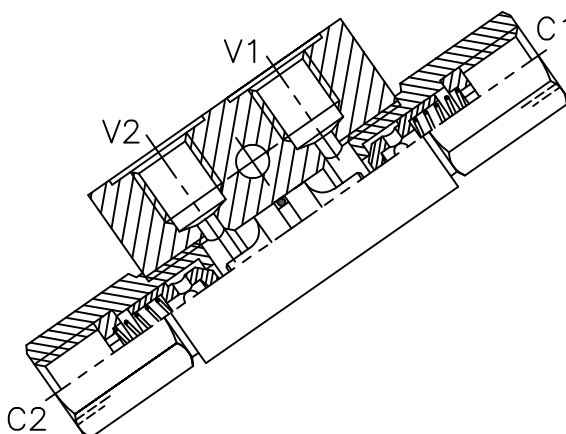
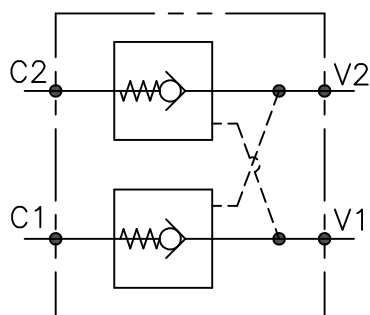
SOLO PER VERSIONI 1/4" E 3/8" GAS / ONLY FOR 1/4" 3/8" GAS VERSION

**DIMENSIONI  
DIMENSIONS**

NUMERO VALVOLA VALVE NUMBER	D	E	F	G	L	M	N	P	Q	R	S	T	Attacchi Port size V2-C2 V1-C1 GAS (BSPP)	Luce nominale Rated size DN	Rapporto di pilotaggio Pilot ratio	Portata max max flow-rate l/min-GPM
030	64	40	30	36	14	27	13	8	6,5	27	27	22	1/4"	6	6:1	12-3.2
031													3/8"	8	6:1	23-6
032	80	50	35	38	21	34	16	15	6,5	32	26	27	1/2"	11	4:1	40-10.6
033	100	60	40	50	25	39	21	15	8,5	41	33	38	3/4"	15	3.5:1	60-15.8

**CODICE DI ORDINAZIONE  
HOW TO ORDER**

<p>N03</p> <p>Numero valvola / Valve number</p> <p>030</p> <p>031</p>	<p>031</p> <p>A O-RING sul pist. di pilotaggio Pilot piston O-RING</p> <p>O Senza O-RING sul pist. di pilotaggio No pilot piston O-RING</p>	<p>0</p> <p>Inizio apertura Cracking pressure</p> <p>J 1 bar <b>Molla (colore nero)</b> <b>Spring (black)</b></p> <p>W 6÷8 bar <b>Molla (colore giallo)</b> <b>Spring (yellow)</b></p>	<p>W 0 . A</p> <p>Materiale collettore Body material</p> <p>Acciaio zincato Zinc plated steel</p>
<p>003</p> <p>Numero valvola / Valve number</p> <p>032</p> <p>033</p>	<p>033</p> <p>A O-RING sul pist. di pilotaggio Pilot piston O-RING</p> <p>O Senza O-RING sul pist. di pilotaggio No pilot piston O-RING</p>	<p>0</p> <p>Inizio apertura Cracking pressure</p> <p>J 1 bar <b>Molla (colore nero)</b> <b>Spring (black)</b></p> <p>W 6÷8 bar <b>Molla (colore giallo)</b> <b>Spring (yellow)</b></p>	<p>W 0 . A</p> <p>Materiale collettore Body material</p> <p>Acciaio zincato Zinc plated steel</p>



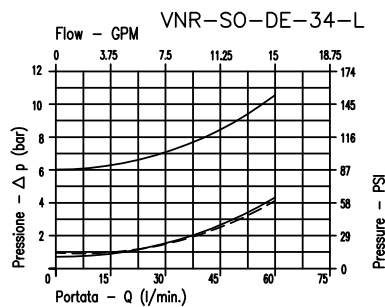
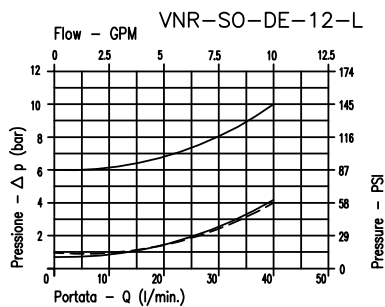
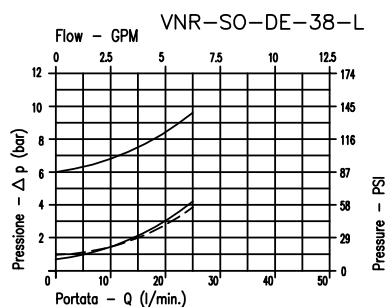
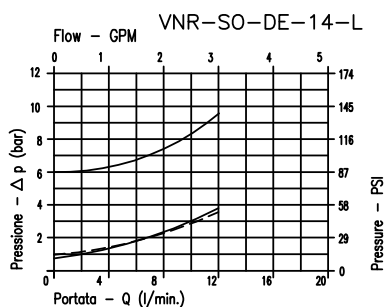
**CARATTERISTICHE**

Luce nominale  
Portata min/max  
Pressione max. di picco  
Pressione max. di taratura  
Rapporto di pilotaggio standard  
Temperatura ambiente  
Temperatura olio  
Filtraggio consigliato  
Coppia di serraggio  
Peso

**Pagina seguente/next page**  
**Pagina seguente/next page**  
**350 bar 5075 PSI**  
**Pagina seguente/next page**  
**Pagina seguente/next page**  
**-30°C + 50°C**  
**-30°C + 80°C**  
**30 + 50**  
**Pagina seguente/next page**  
**0.7-0.9-0.1-2 kg**

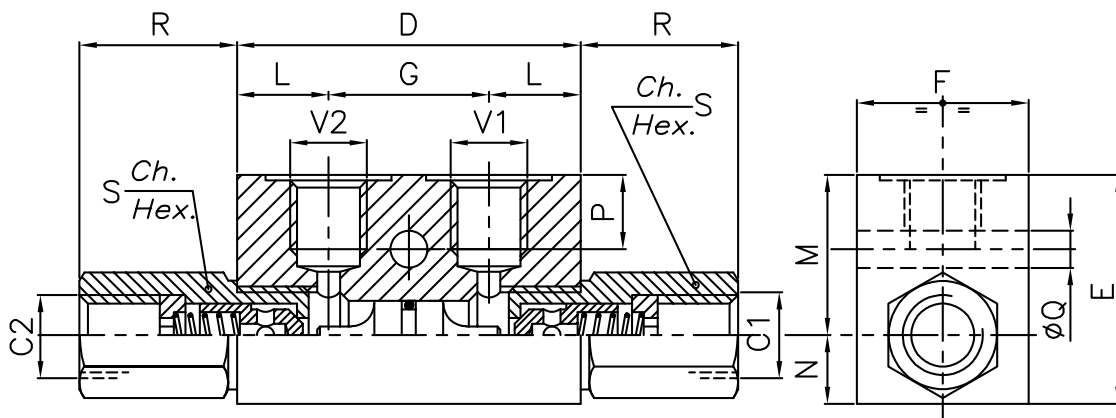
**PERFORMANCE**

Rated size  
Min/max flow-rate  
Max peak pressure  
Max setting pressure  
Standard pilot ratio  
Room temperature  
Oil temperature  
Recommended filtration  
Tightening torque  
Weight



———— 8Bar Flusso libero (Free flow)  
- - - - 1Bar Flusso libero (Free flow)  
———— Flusso pilotato (Piloted open)

Viscosita' olio 46 cSt a 50 °C  
Oil viscosity 46 cSt at 50 °C



## DIMENSIONI DIMENSIONS

NUMERO VALVOLA VALVE NUMBER	D	E	F	G	L	M	N	P	Q	R	S	Attacchi Port size V2-C2 V1-C1 GAS (BSPP)	Luce nominale Rated size DN	Rapporto di pilotaggio Pilot ratio	Portata max max flow-rate l/min-GPM
030	60	40	30	28	16	28	12	13	6.5	27	19	1/4"	6	4:1	10-3.2
031	70	50	35	38	16	35	15	15	6.5	29	24	3/8"	8	4:1	23-6
032	80	50	35	38	21	34	16	15	6.5	32	27	1/2"	11	4:1	40-10.6
033	100	60	40	50	25	39	21	15	8.5	41	38	3/4"	16	3.5:1	60-15.8

## COLLETTORE IN ALLUMINIO ALUMINIUM BODY

## CODICE DI ORDINAZIONE HOW TO ORDER

003                      033                      0                      W                      0

Numero valvola / Valve number

030

031

032

033

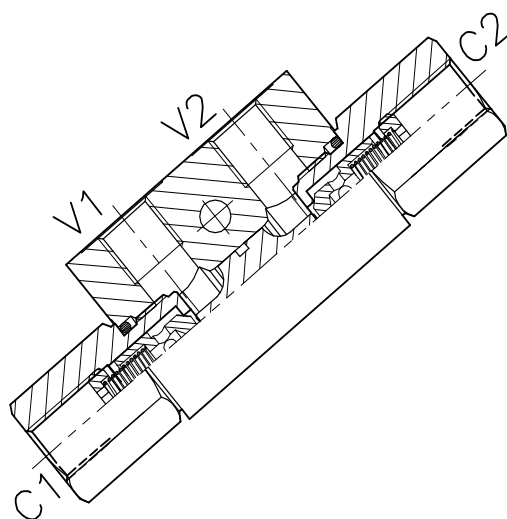
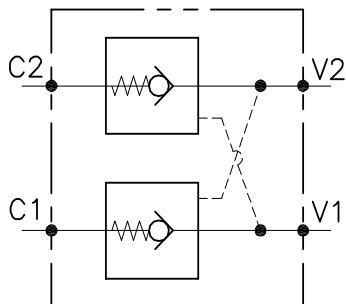
A O-RING sul pist. di pilotaggio  
Pilot piston O-RING

O Senza O-RING sul pist. di pilotaggio  
No pilot piston O-RING

Inizio apertura  
Cracking pressure

J 1 bar  
**Molla (colore nero)**  
**Spring (black)**

W 6÷8 bar  
**Molla (colore giallo)**  
**Spring (yellow)**



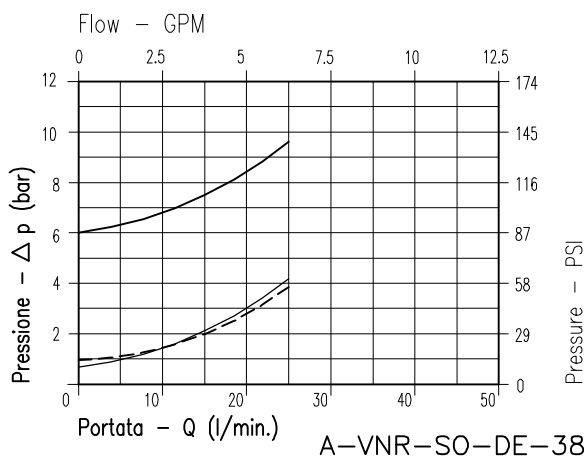
**CARATTERISTICHE**

Luce nominale min/max  
 Portata min/max  
 Pressione di lavoro max.  
 Rapporto di pilotaggio  
 Temperatura ambiente  
 Temperatura olio  
 Filtraggio consigliato  
 Peso  
 Peso

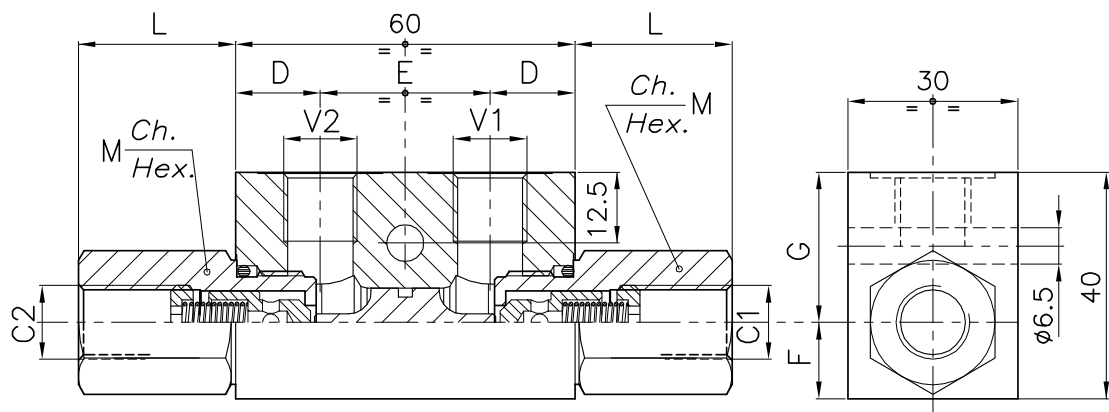
**Pagina seguente/next page**  
**Pagina seguente/next page**  
**350 bar - 5075 PSI**  
**4 : 1**  
**-30°C + 50°C**  
**-30°C + 80°C**  
**30÷50 micron**  
**0.645 Kg. 1/4" GAS**  
**0.657 Kg. 3/8" GAS**

**PERFORMANCE**

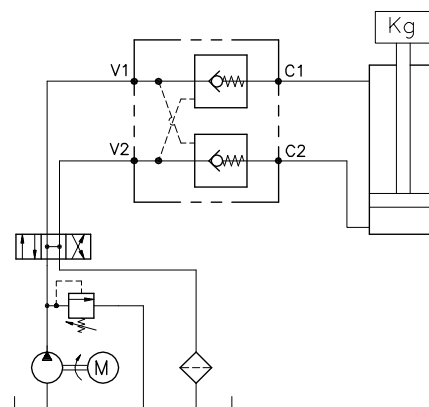
Min/max rated size  
 Min/max flow-rate  
 Max working pressure  
 Pilot ratio  
 Room temperature  
 Oil temperature  
 Recommended filtration  
 Weight  
 Weight



**Viscosità olio 46 cSt a 50°C**  
**Oil viscosity 46 cSt at 50°C**



**ESEMPIO TIPICO DI CIRCUITO  
TYPICAL CIRCUIT EXAMPLE**



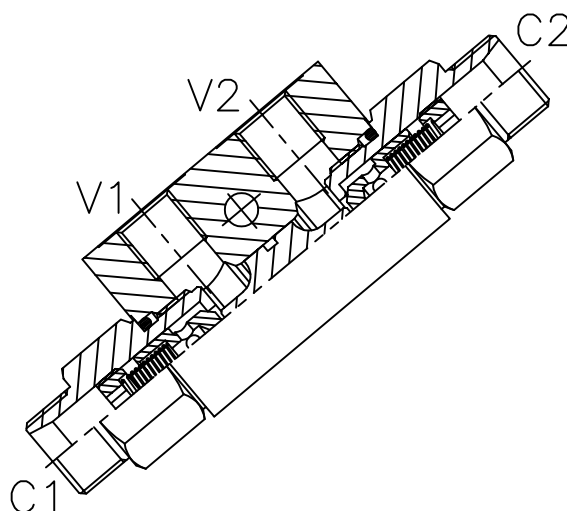
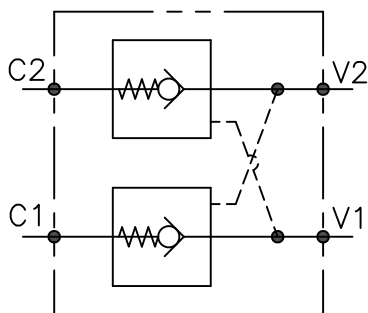
**DIMENSIONI  
DIMENSIONS**

NUMERO VALVOLA VALVE NUMBER	D	E	F	G	L	M	Attacchi Port size V2-C2 V1-C1 GAS (BSPP)	Luce nominale Rated size DN	Portata max Max flow-rate l/min - GPM
360	17	27	14.5	25.5	31.5	24	3/8"	6	35-9.2

**CODICE DI ORDINAZIONE  
HOW TO ORDER**

003      360      0      W      0 . A

Numero valvola / Valve number		Inizio apertura Cracking pressure	Materiale collettore Body material
360	A O-RING sul pist. di pilotaggio Pilot piston O-RING	J 1 bar <b>Molla (colore nero) Spring (black)</b>	Acciaio zincato Zinc plated steel
	O Senza O-RING sul pist. di pilotaggio No pilot piston O-RING	W 6÷8 bar <b>Molla (colore giallo) Spring (yellow)</b>	



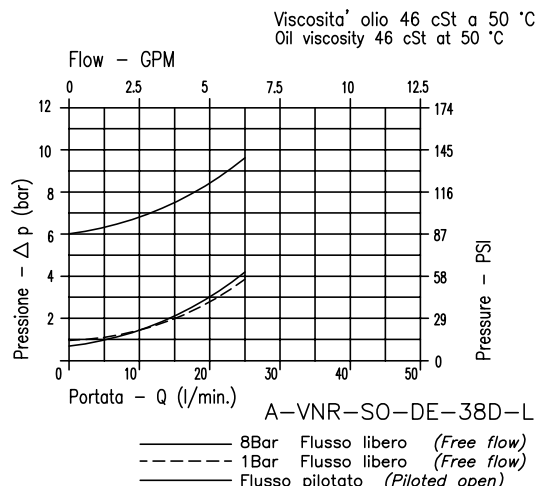
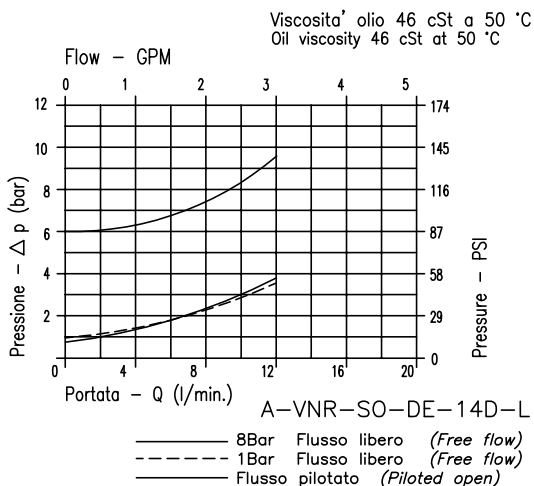
**CARATTERISTICHE**

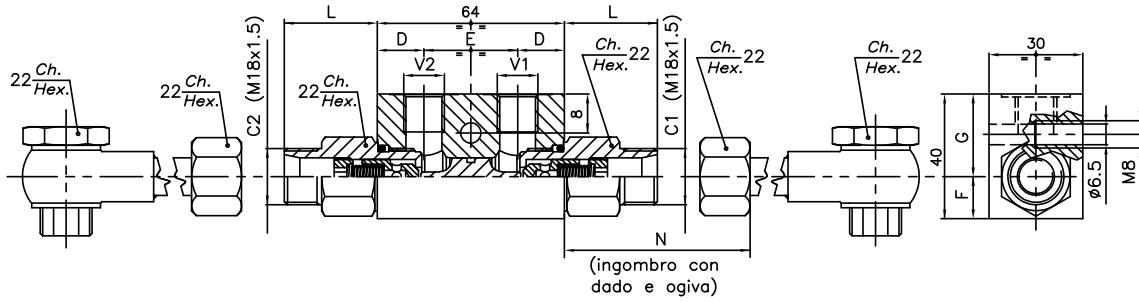
Luce nominale  
Portata min/max  
Pressione max. di picco  
Pressione max. di taratura  
Rapporto di pilotaggio standard  
Temperatura ambiente  
Temperatura olio  
Filtraggio consigliato  
Coppia di serraggio  
Peso

**Pagina seguente/next page**  
**Pagina seguente/next page**  
**350 bar 5075 PSI**  
**Pagina seguente/next page**  
**Pagina seguente/next page**  
**-30°C + 50°C**  
**-30°C + 80°C**  
**30 + 50**  
**Pagina seguente/next page**  
**0.7-0.9-0.1-2 kg**

**PERFORMANCE**

Rated size  
Min/max flow-rate  
Max peak pressure  
Max setting pressure  
Standard pilot ratio  
Room temperature  
Oil temperature  
Recommended filtration  
Tightening torque  
Weight





**A RICHIESTA  
ON REQUEST**

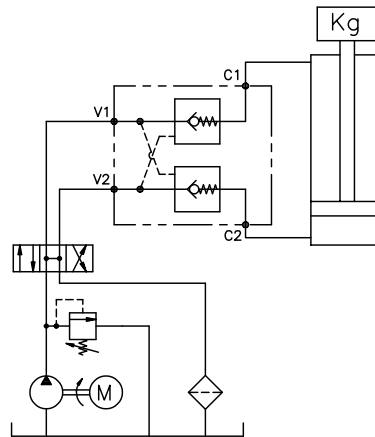
CODICE KIT RUBO: Bullone, Rondelle, Occhio, Tubo.  
PIPE KIT CODE: Bolt, Washers, Fitting, Pipe

KT-012-40 (M=40 mm)

KT-012-200 (M=200 mm)

KT-012-400 (M=400 mm)

**ESEMPIO TIPICO DI CIRCUITO  
TYPICAL CIRCUIT EXAMPLE**



**DIMENSIONI  
DIMENSIONS**

N° VALVOLA VALVE NUMBER	SIGLA VALVOLA VALVE CODE	D	E	F	G	L	N	Attacchi Port size V1-V2 GAS (BSPP)	Luce nominale Rated size DN	Portata max max flow-rate l/min-GPM
252	A-VNR-SO-DE-140-L-...	14	36	13	27	23	34	1/4"	6	16-4.2
368	A-VNR-SO-DE-380-L-...							3/8"	8	35-9.2

**CODICE DI ORDINAZIONE  
HOW TO ORDER**

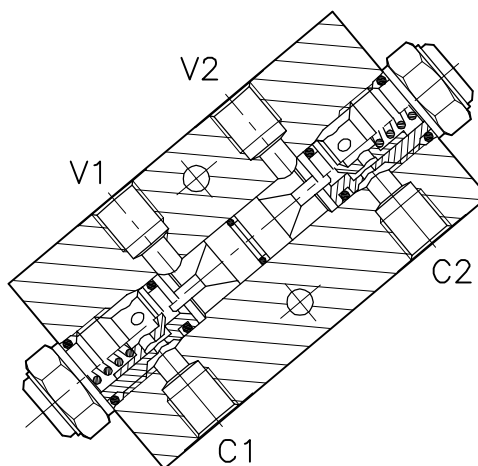
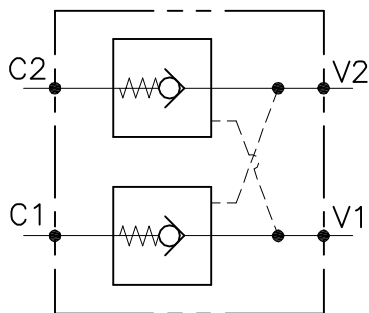
N03 252 0 W 0 . A } D  
003 368 0 W 0 . A } D

Dado e ogiva  
nut and cutting rings

Omettere per fornitura  
standard (solo DIN)  
Omit for standard  
(DIN only)

	Inizio apertura Cracking pressure	Materiale collettore Body material
A O-RING sul pist. di pilotaggio Pilot piston O-RING	J 1 bar Molla (colore nero) Spring (black)	Acciaio zincato Zinc plated steel
O Senza O-RING sul pist. di pilotaggio No pilot piston O-RING	W 6÷8 bar Molla (colore giallo) Spring (yellow)	





**CARATTERISTICHE**

Luce nominale min/max	<b>Vedi Pag. 18</b>
Portata min/max	<b>Vedi Pag. 18</b>
Pressione di lavoro max.	<b>350 bar - 5075 PSI</b>
Rapporto di pilotaggio	<b>4 : 1</b>
Temperatura ambiente	<b>-30°C + 50°C</b>
Temperatura olio	<b>-30°C + 80°C</b>
Filtraggio consigliato	<b>50 micron</b>
Peso	<b>0.610 Kg. 1/4" GAS</b>
Peso	<b>0.981 Kg. 3/8" GAS</b>
Peso	<b>0.957 Kg. 1/2" GAS</b>

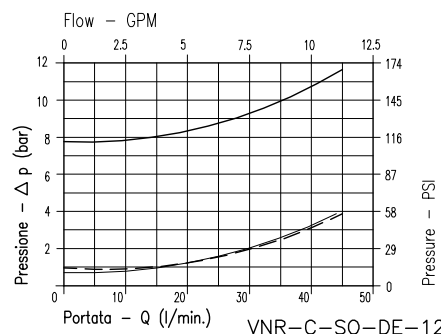
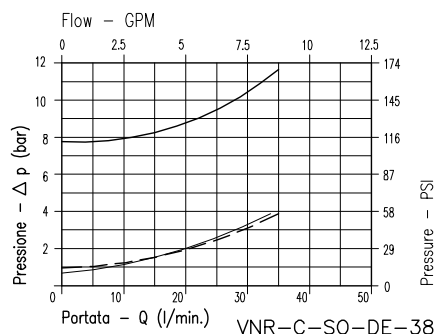
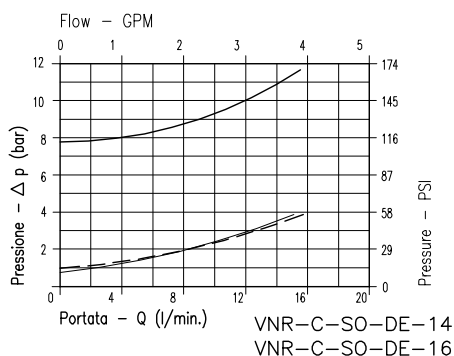
**PERFORMANCE**

Min/max rated size
Min/max flow-rate
Max working pressure
Pilot ratio
Room temperature
Oil temperature
Recommended filtration
Weight
Weight
Weight

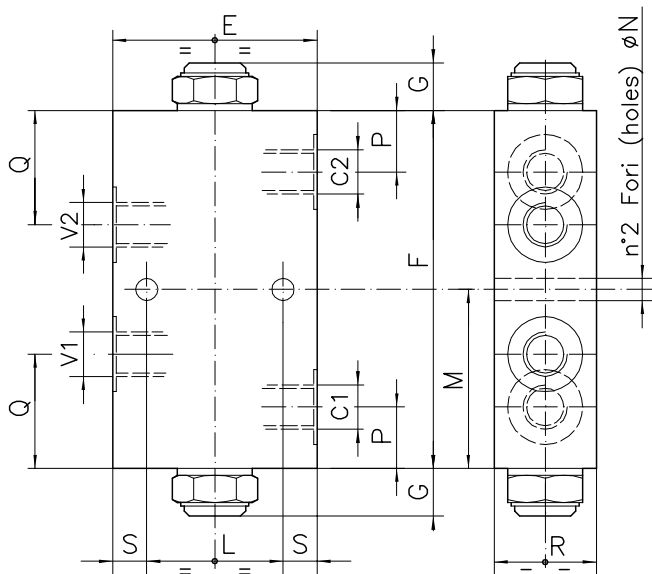
8Bar Flusso libero  
(free flow)

1Bar Flusso libero  
(free flow)

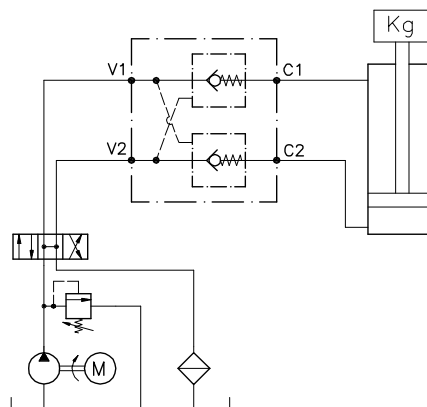
Flusso pilotato  
(piloted flow)



Viscosità olio 46 cSt a 50°C / Oil viscosity 46 cSt at 50°C



**ESEMPIO TIPICO DI CIRCUITO  
TYPICAL CIRCUIT EXAMPLE**



**DIMENSIONI  
DIMENSIONS**

NUMERO VALVOLA VALVE NUMBER	E	F	G	L	M	N	P	Q	R	S	Attacchi Port size V2-C2 V1-C1 GAS (BSPP)	Luce nominale Rated size DN	Portata max Max flow-rate l/min - GPM
047	60	105	15	40	52.5	6.5	18	33.5	30	10	1/4"	4	15-4
049	70	110	18	40	55	8.5	20.5	38	35	15	3/8"	6	35-9.2
050	70	110	18	40	55	8.5	20.5	38	35	15	1/2"	8	45-12

**CODICE DI ORDINAZIONE  
HOW TO ORDER**

003      047      0      J      0      . A

Numero valvola / Valve number

047

049

050

A O-RING sul pist. di pilotaggio  
Pilot piston O-RING

O Senza O-RING sul pist. di pilo-  
taggio No pilot piston O-RING

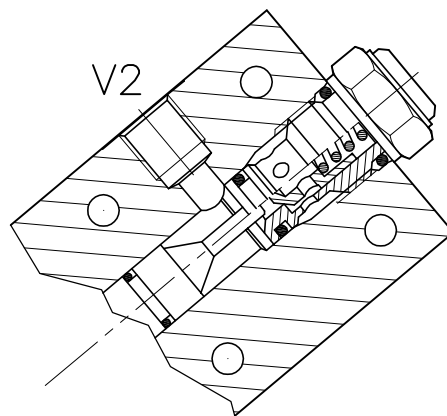
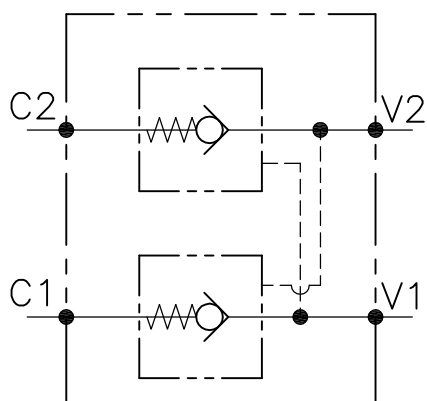
Inizio apertura  
Cracking pressure

J 1 bar  
**Molla (colore nero)  
Spring (black)**

W 6-8 bar  
**Molla (colore giallo)  
Spring (yellow)**

Materiale collettore  
Body material

Acciaio zincato  
Zinc plated steel



### CARATTERISTICHE

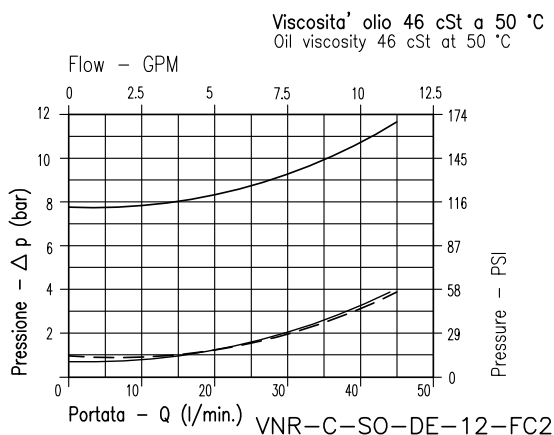
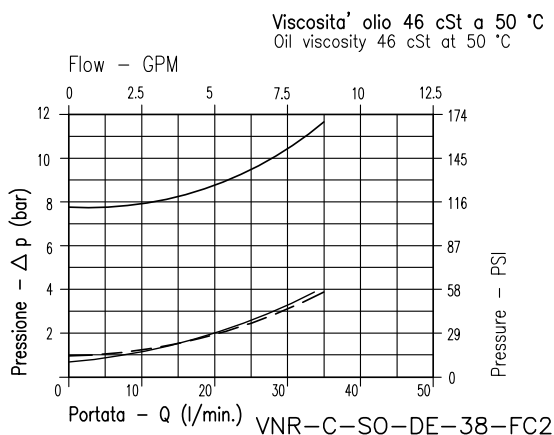
### PERFORMANCE

Luce nominale min/max	DN 6/10	Min/max rated size
Portata min/max	Vedi pag. seguente/next page	Min/max flow-rate
Pressione di lavoro max.	350 bar - 5075 PSI	Max working pressure
Rapporto di pilotaggio	4 : 1	Pilot ratio
Temperatura ambiente	-30°C + 50°C	Room temperature
Temperatura olio	-30°C + 80°C	Oil temperature
Filtraggio consigliato	50 micron	Recommended filtration
Peso	0.450 Kg. 1/4" GAS	Weight
Peso	0.740 Kg. 3/8" GAS	Weight
Peso	0.724 Kg. 1/2" GAS	Weight

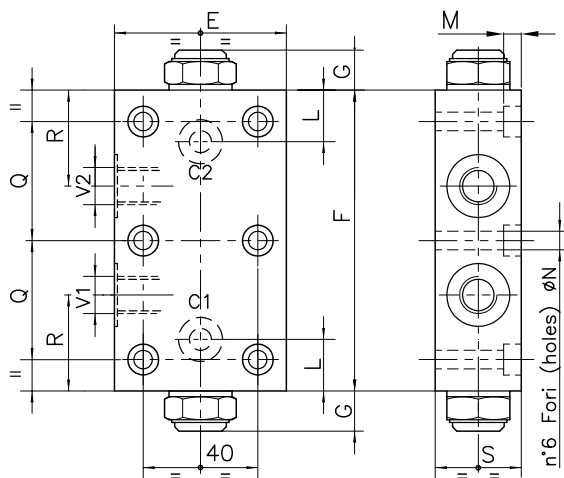
8Bar Flusso libero  
(free flow)

1Bar Flusso libero  
(free flow)

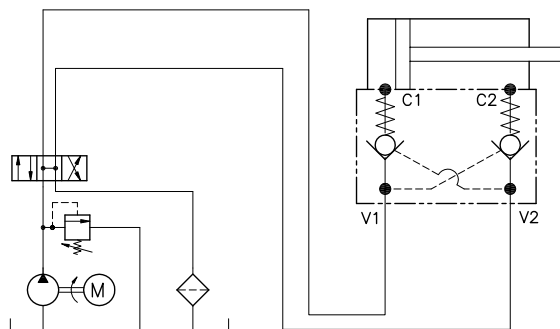
Flusso pilotato  
(piloted flow)



Viscosità olio 46 cSt a 50°C / Oil viscosity 46 cSt at 50°C



**ESEMPIO TIPICO DI CIRCUITO  
TYPICAL CIRCUIT EXAMPLE**



**DIMENSIONI  
DIMENSIONS**

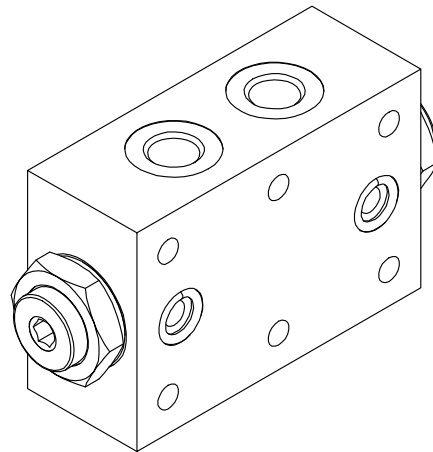
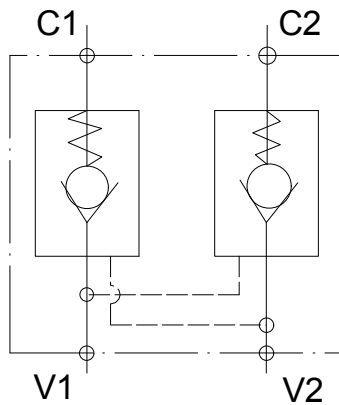
NUMERO VALVOLA VALVE NUMBER	E	F	G	L	M	N	Q	R	S	Attacchi Port size V2-C2 V1-C1 GAS (BSPP)	Rapporto di pilotaggio Pilot Ratio	Portata max Max flow-rate l/min - GPM
294	60	90	12	14	0	6.5	35	29	34.5	3/8"	5.4:1	30-7.9
349	69	110	17	22.5	0	8.5	40	38	34.5	1/2"	4:1	45-12

**CODICE DI ORDINAZIONE  
HOW TO ORDER**

003      349      0      J      0      .      A

Numero valvola / Valve number		Inizio apertura Cracking pressure	Materiale collettore Body material
294	A	J	Acciaio zincato Zinc plated steel
349	O	W	

**A** O-RING sul pist. di pilotaggio  
Pilot piston O-RING  
**O** Senza O-RING sul pist. di pilotaggio  
No pilot piston O-RING  
**J** 1 bar  
**Molla (colore nero)**  
**Spring (black)**  
**W** 6÷8 bar  
**Molla (colore giallo)**  
**Spring (yellow)**



### CARATTERISTICHE

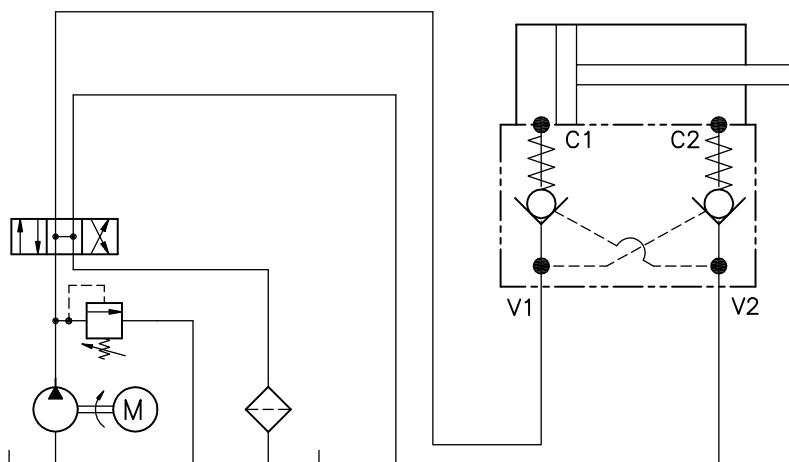
Portata min/max  
Pressione max. di picco  
Rapporto di pilotaggio  
Collettore in acciaio zincato

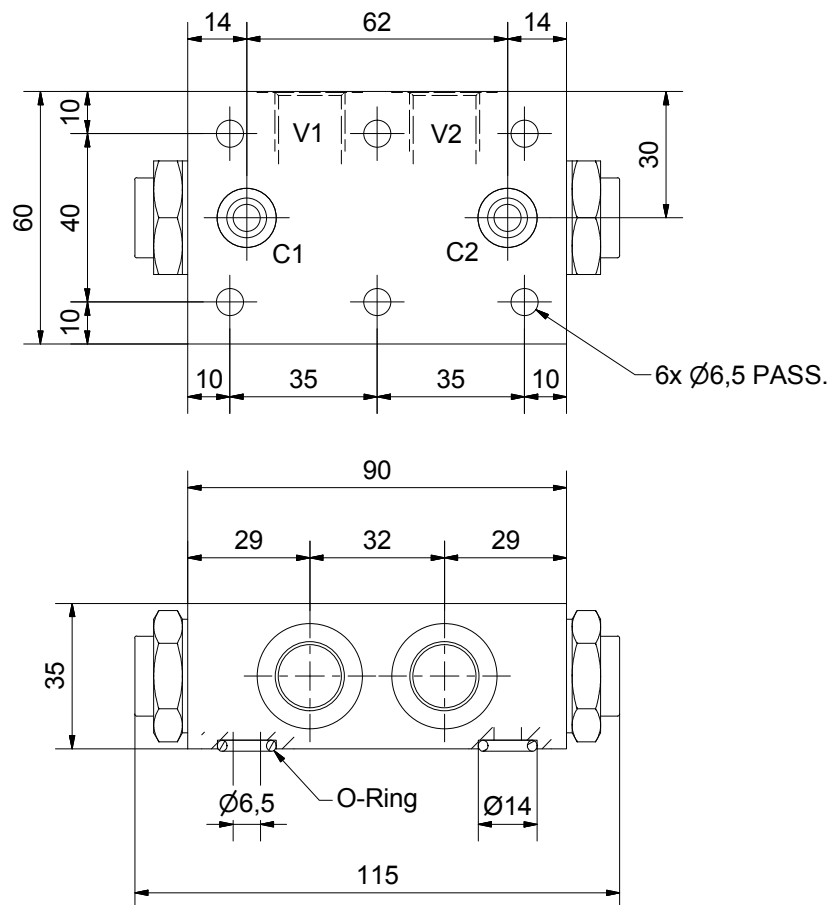
**30 litri/min**  
**350 bar**  
**7.1:1**

### PERFORMANCE

Min/max flow-rate  
Max peak pressure  
Pilot ratio  
Galvanized steel body

### ESEMPIO TIPICO DI CIRCUITO TYPICAL CIRCUIT EXAMPLE





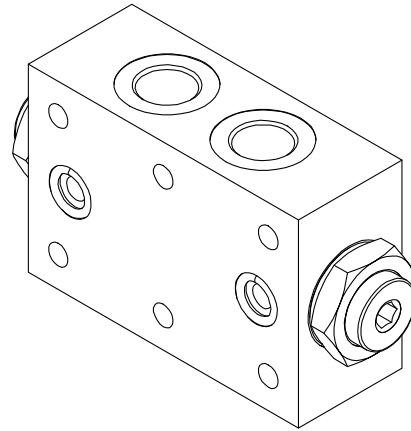
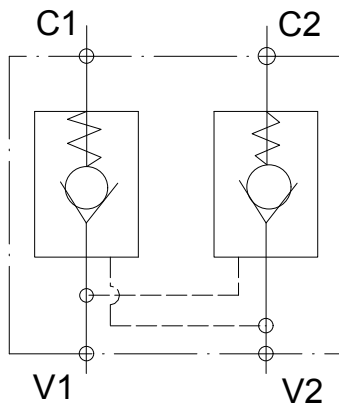
**DIMENSIONI  
DIMENSIONS**

ATTACCHI PORTS	V1-V2	C	Rapporto pilot. Pilot ratio	Peso valvola valve weight kg
GAS/bspp	1/4"	6.5	7.1:1	1.395

**CODICE DI ORDINAZIONE  
HOW TO ORDER**

003      514      0      W      0      .      A

	Inizio apertura Cracking pressure	Materiale collettore Body material
A	J	Acciaio zincato Zinc plated steel
O-RING sul pist. di pilotaggio Pilot piston O-RING	1 bar <b>Molla (colore nero) Spring (black)</b>	
Senza O-RING sul pist. di pilotaggio No pilot piston O-RING	W	
	6÷8 bar <b>Molla (colore giallo) Spring (yellow)</b>	

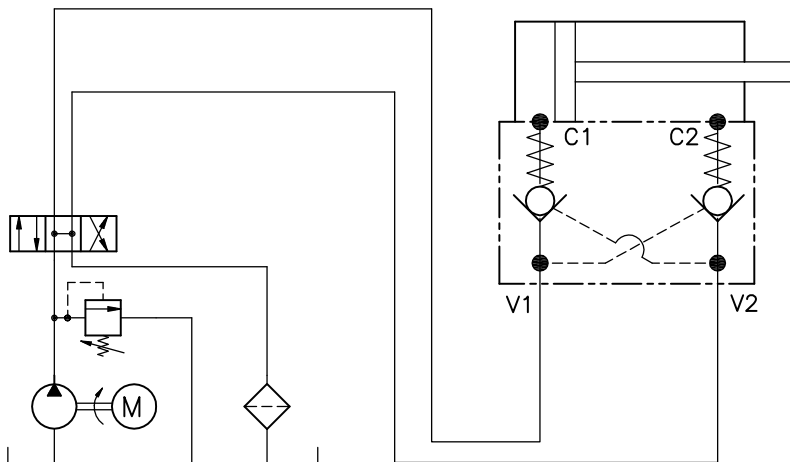
**CARATTERISTICHE**

Portata min/max  
Pressione max. di picco  
Rapporto di pilotaggio

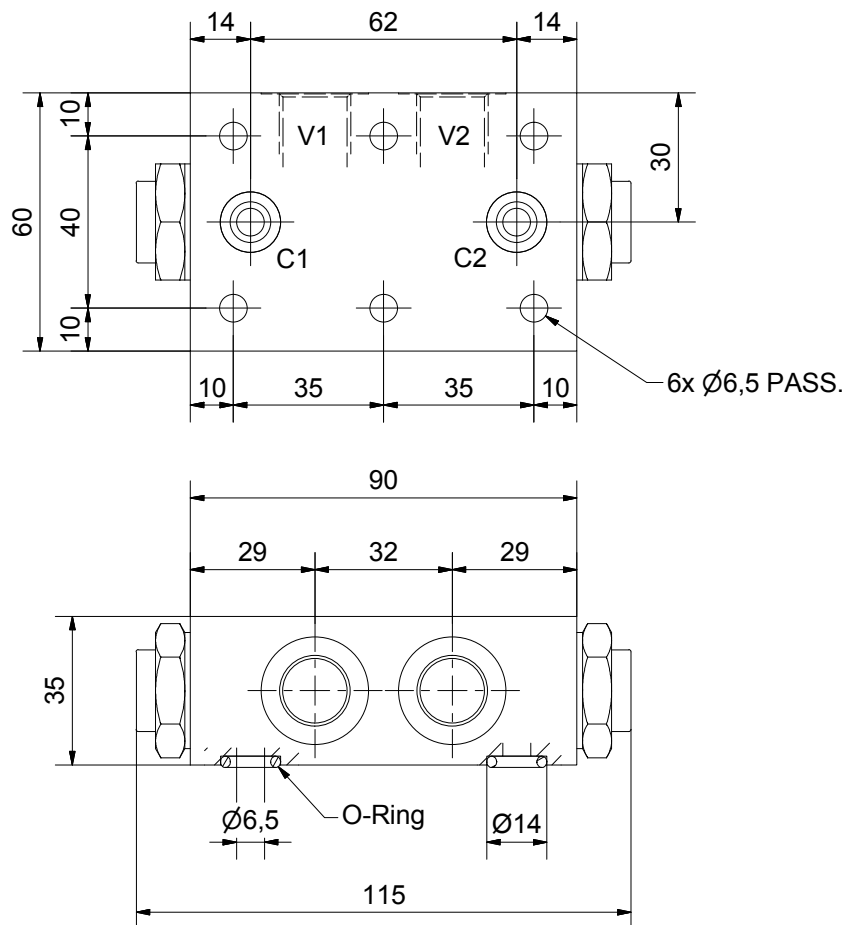
**30 litri/min**  
**350 bar**  
**7.1:1**

**PERFORMANCE**

Min/max flow-rate  
Max peak pressure  
Pilot ratio

**ESEMPIO TIPICO DI CIRCUITO**  
**TYPICAL CIRCUIT EXAMPLE**

DOUBLE CARTRIDGE PILOT CHECK VALVE  
WITH FLANGEABLE BODY



**DIMENSIONI  
DIMENSIONS**

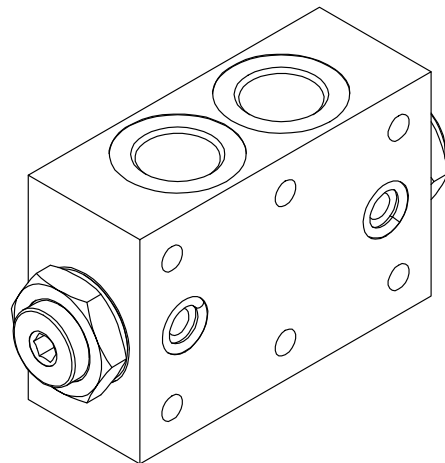
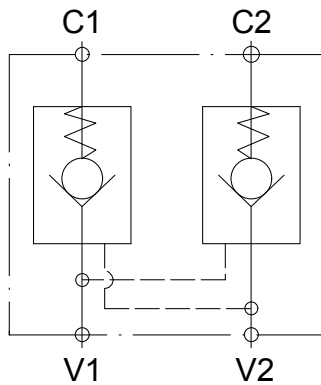
ATTACCHI PORTS	V1-V2	C	Rapporto pilot. Pilot ratio	Peso valvola valve weight kg
GAS/bspp	3/8"	6.5	7.1:1	1.374

**CODICE DI ORDINAZIONE  
HOW TO ORDER**

003      513      0      W      0      .      A

	Inizio apertura Cracking pressure	Materiale collettore Body material
A	1 bar <b>Molla (colore nero) Spring (black)</b>	Acciaio zincato Zinc plated steel
O	6÷8 bar <b>Molla (colore giallo) Spring (yellow)</b>	



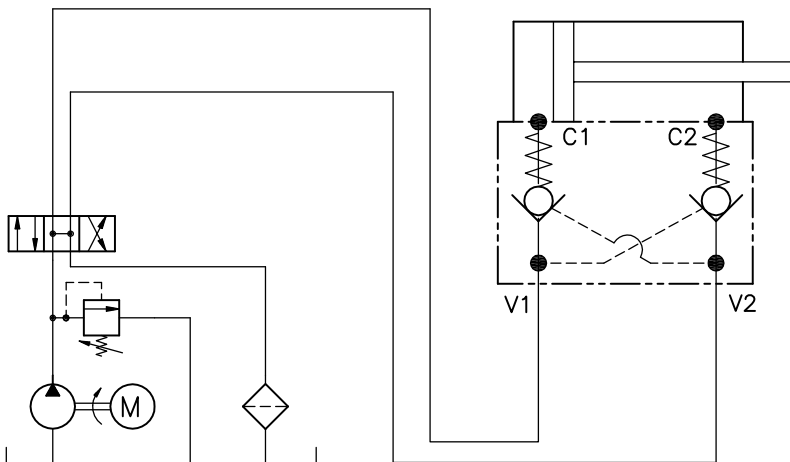
**CARATTERISTICHE**

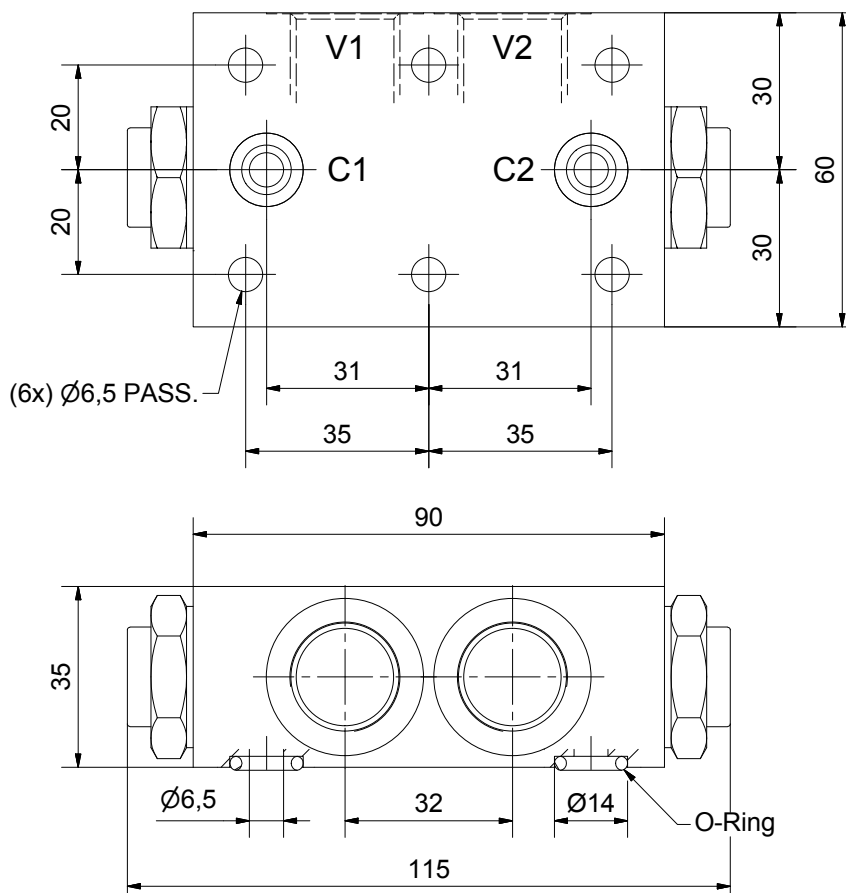
Portata min/max  
Pressione max. di picco  
Rapporto di pilotaggio

**35 litri/min**  
**350 bar**  
**7.1**

**PERFORMANCE**

Min/max flow-rate  
Max peak pressure  
Pilot ratio

**ESEMPIO TIPICO DI CIRCUITO**  
**TYPICAL CIRCUIT EXAMPLE**



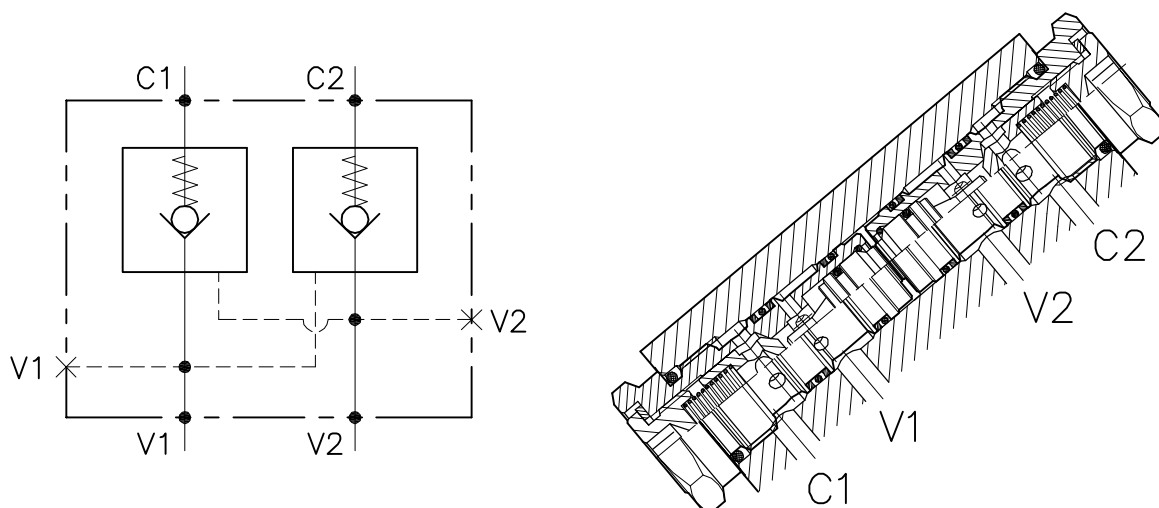
**DIMENSIONI  
DIMENSIONS**

ATTACCHI PORTS	V1-V2	C	Peso valvola valve weight kg
GAS/bspp	1/2"	6.5	1,329

**CODICE DI ORDINAZIONE  
HOW TO ORDER**

003 515 0 W 0 . A

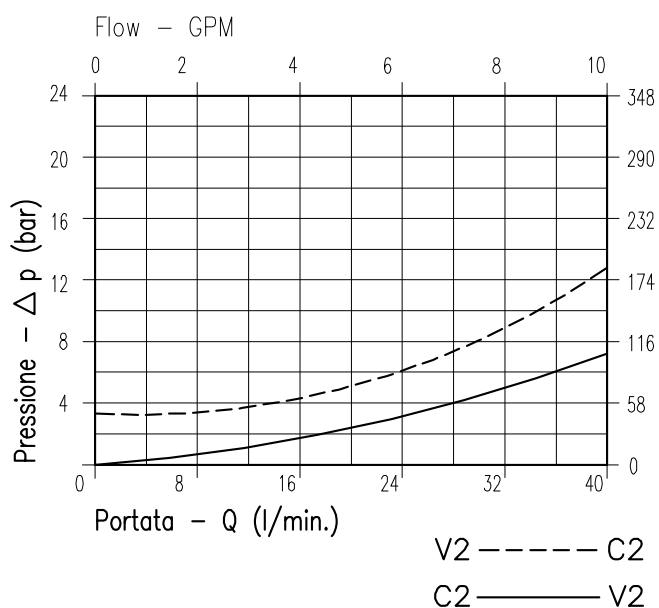
	Inizio apertura Cracking pressure	Materiale collettore Body material
A O-RING sul pist. di pilotaggio Pilot piston O-RING	J 1 bar <b>Molla (colore nero) Spring (black)</b>	Acciaio zincato Zinc plated steel
O Senza O-RING sul pist. di pilotaggio No pilot piston O-RING	W 6÷8 bar <b>Molla (colore giallo) Spring (yellow)</b>	

**CARATTERISTICHE**

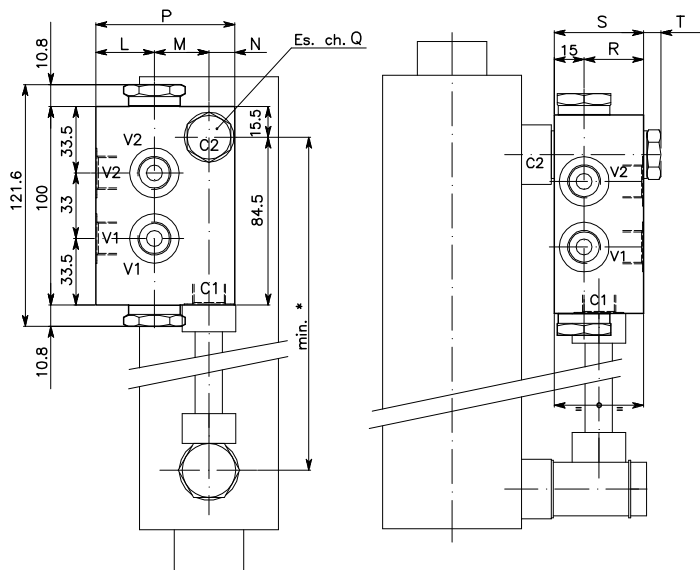
Luce nominale	<b>DN 6</b>
Portata min/max	<b>1/40 l/min. - 0.26/10.6 GPM</b>
Pressione di lavoro max.	<b>350 bar - 5075 PSI</b>
Rapporto di pilotaggio	<b>3 : 1</b>
Temperatura ambiente	<b>-30°C + 50°C</b>
Temperatura olio	<b>-30°C + 80°C</b>
Filtraggio consigliato	<b>50 micron</b>
Peso	<b>1.093 Kg 3/8" GAS</b>
Peso	<b>1.400 Kg 1/2" GAS</b>

**PERFORMANCE**

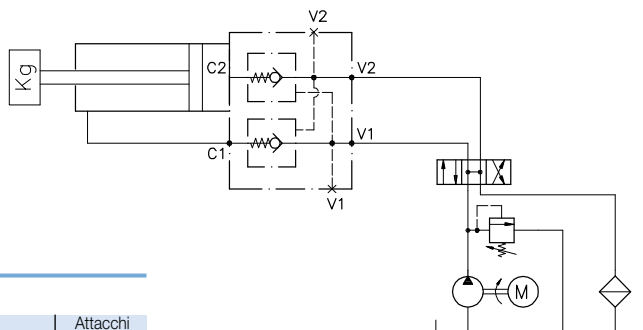
Rated size
Min/max flow-rate
Max working pressure
Pilot ratio
Room temperature
Oil temperature
Recommended filtration
Weight
Weight



**Viscosità olio 46 cSt a 50°C**  
**Oil viscosity 46 cSt at 50°C**



**ESEMPIO TIPICO DI CIRCUITO  
TYPICAL CIRCUIT EXAMPLE**



**DIMENSIONI  
DIMENSIONS**

NUMERO VALVOLA VALVE NUMBER	L	M	N	P	Q	R	S	T	Attacchi Port size V2-C2 V1-C1 GAS (BSPP)
232	29.5	27.5	13	70	22	30	45	9	3/8"
250	34	30	16	80	27	35	50	10	1/2"

**CODICE DI ORDINAZIONE  
HOW TO ORDER**

003      232      0      J      0      .      A

Numero valvola / Valve number		Inizio apertura Cracking pressure	Materiale collettore Body material
232	A	J 1 bar <b>Molla (colore nero) Spring (black)</b>	Acciaio zincato Zinc plated steel
250	O	W 6÷8 bar <b>Molla (colore giallo) Spring (yellow)</b>	

A O-RING sul pist. di pilotaggio  
Pilot piston O-RING  
 O Senza O-RING sul pist. di pilotaggio  
No pilot piston O-RING