

CARATTERISTICHE

Luce nominale	
Portata min/max	DN 6
Pressione max. di picco	1/50 l/min - 0.26/12.5 GPM
Pressione max. di taratura	350 bar - 5075 PSI
Rapporto di pilotaggio standard	350 bar - 5075 PSI
Temperatura ambiente	4.25 : 1
Temperatura olio	-30°C + 50°C
Filtraggio consigliato	-30°C + 80°C
Peso	30 micron
Peso	

PERFORMANCE

Rated size
Min/max flow-rate
Max peak pressure
Max setting pressure
Standard pilot ratio
Room temperature
Oil temperature
Recommended filtration
Weight
Weight

NOTE:

La taratura deve essere **1.3** volte maggiore della pressione indotta dal carico.

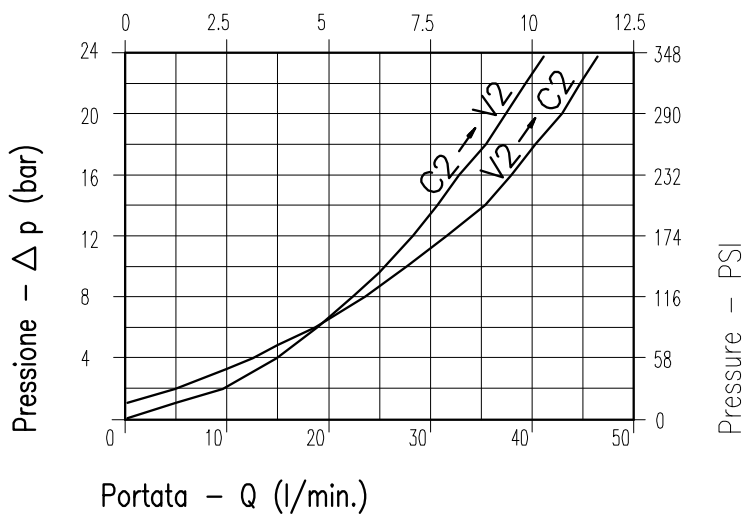
Valve should be set at **1.3** times load induced pressure.

ESEMPIO/EXAMPLE:

Pressione di lavoro max:

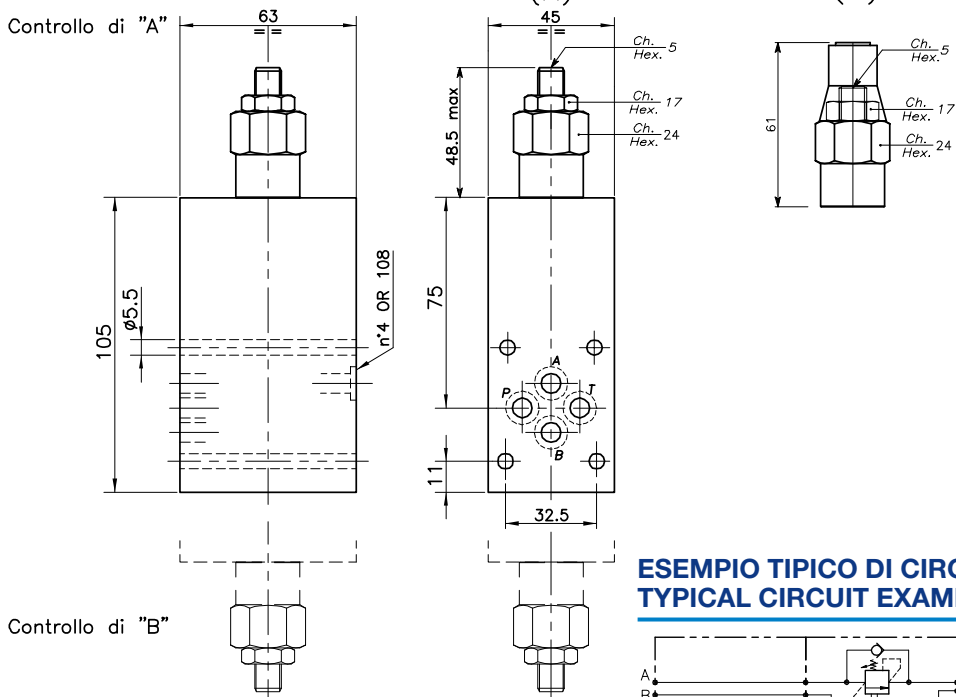
Max working pressure:

350 bar / 1.3 = 270 bar

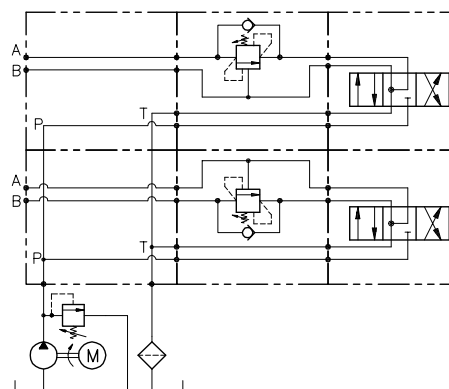


Viscosità olio 46 cSt a 50°C
Oil viscosity 46 cSt at 50°C

REGOLAZIONE
ADJUSTMENT



ESEMPIO TIPICO DI CIRCUITO
TYPICAL CIRCUIT EXAMPLE



DIMENSIONI
DIMENSIONS

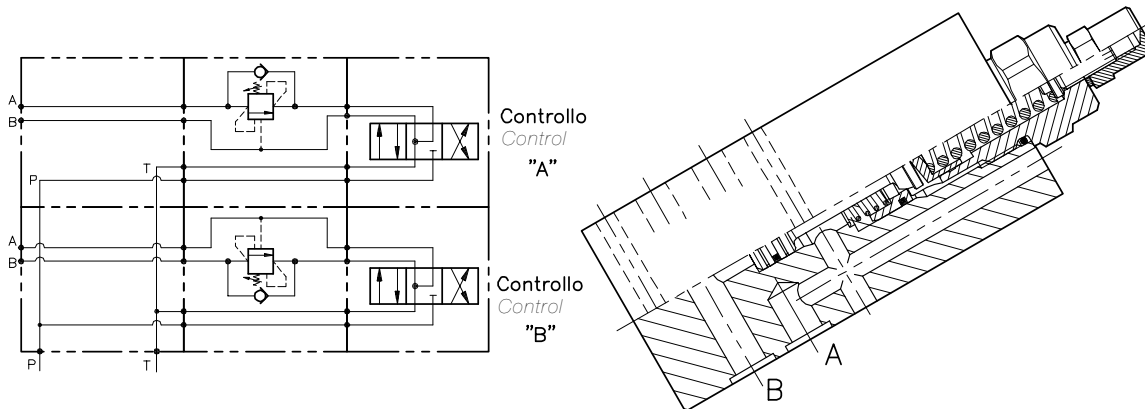
Campo taratura Setting range		Tipo flangia Flange type	Portata max Max flow-rate l/min - GPM	Controllo Control
229	228	CETOP 03	50-12.5	A
231	230	CETOP 03	50-12.5	B

CODICE DI ORDINAZIONE
HOW TO ORDER

N01 . 229 . 0 X 0 . A

Campo taratura / Setting range	
229	228
231	230
Campo taratura 30÷220 bar (molla colore verde) Setting range 30÷220 bar (green spring)	Campo taratura 60÷350 bar (molla colore giallo) Setting range 60÷350 bar (yellow spring)
Taratura standard (Q=5 l/1') Std. bar setting (Q=5 l/1') 180 bar	Incr. press. - bar giro/vite Pressure rise - turn of screw (50)
Taratura standard (Q=5 l/1') Std. bar setting (Q=5 l/1') 250 bar	Incr. press. - bar giro/vite Pressure rise - turn of screw (90)

Rapporto di pilotaggio Pilot ratios	Regolazione Adjustment	Collettore Body
O 4.25 : 1 D 8 : 1	X Grano - Dowel K Piombata - Sealed	A Acciaio zincato Zinc plated steel



CARATTERISTICHE

Luce nominale	DN 8/10
Portata min/max	1/90 l/min - 0.26/24 GPM
Pressione max. di picco	350 bar - 5075 PSI
Pressione max. di taratura	350 bar - 5075 PSI
Rapporto di pilotaggio standard	6.2 : 1
Temperatura ambiente	-30°C + 50°C
Temperatura olio	-30°C + 80°C
Filtraggio consigliato	30 micron
Peso	
Peso	

PERFORMANCE

Rated size
Min/max flow-rate
Max peak pressure
Max setting pressure
Standard pilot ratio
Room temperature
Oil temperature
Recommended filtration
Weight
Weight

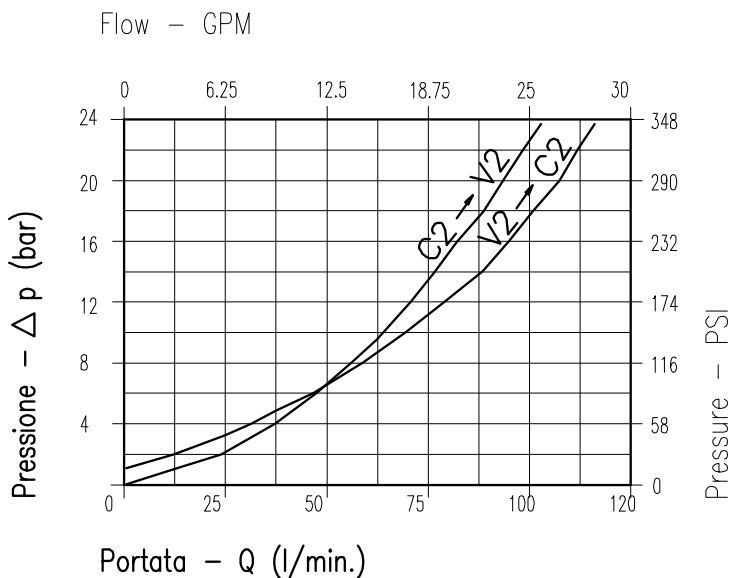
NOTE:

La taratura deve essere **1.3** volte maggiore della pressione indotta dal carico.

Valve should be set at **1.3** times load induced pressure.

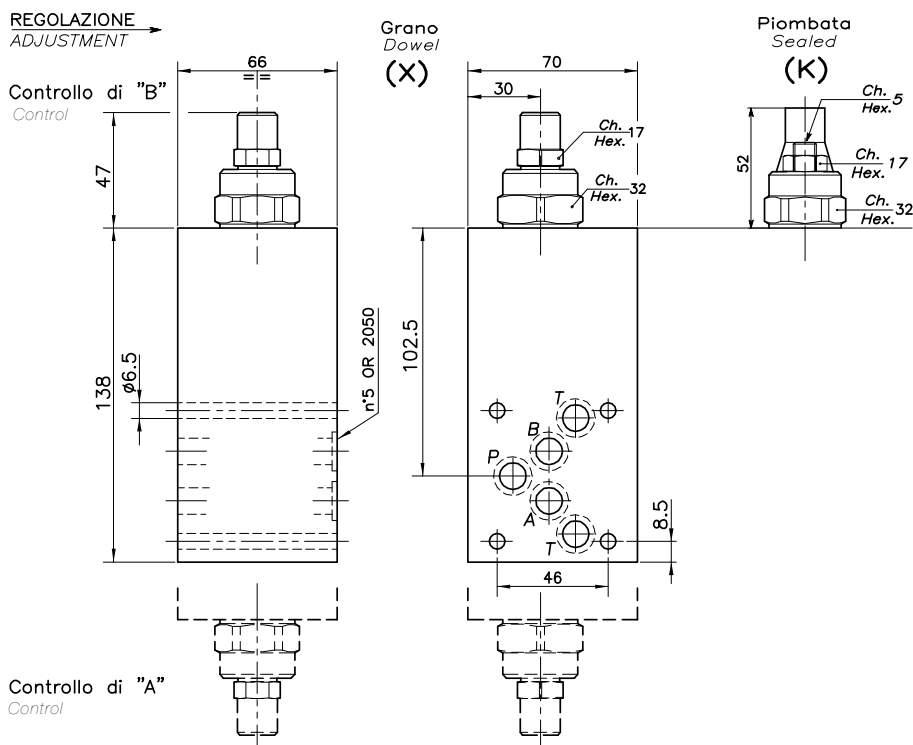
ESEMPIO/EXAMPLE:

Pressione di lavoro max:
Max working pressure:
350 bar / 1.3 = 270 bar



Viscosità olio 46 cSt a 50°C
Oil viscosity 46 cSt at 50°C

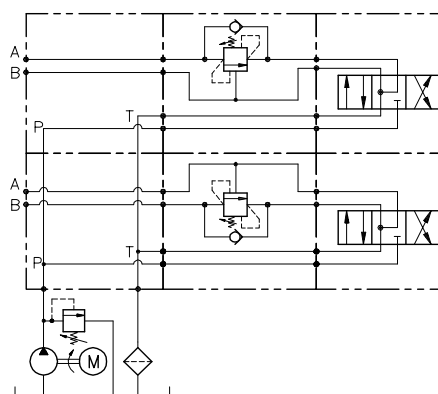
SINGLE COUNTERBALANCE WITH SANDWICH INSTALLATION (CETOP)



DIMENSIONI DIMENSIONS

Campo taratura Setting range	Tipo flangia Flange type	Portata max Max flow-rate	Controllo Control
		l/min - GPM	
483	CETOP 05	90-24	A
484	CETOP 05	90-24	B

ESEMPIO TIPICO DI CIRCUITO TYPICAL CIRCUIT EXAMPLE



CODICE DI ORDINAZIONE HOW TO ORDER

001 . 483 . 0 X 0 . A

Campo taratura / Setting range

483

484

Campo taratura 60÷350 bar (molla colore giallo)
Setting range 60÷350 bar (yellow spring)

Taratura standard (Q=5 l/1')
Std. bar setting Q=5 l/1')

250 bar

Incr. press. - bar giro/vite
Pressure rise - turn of screw
(125)

Rapporto di pilotaggio
Pilot ratios

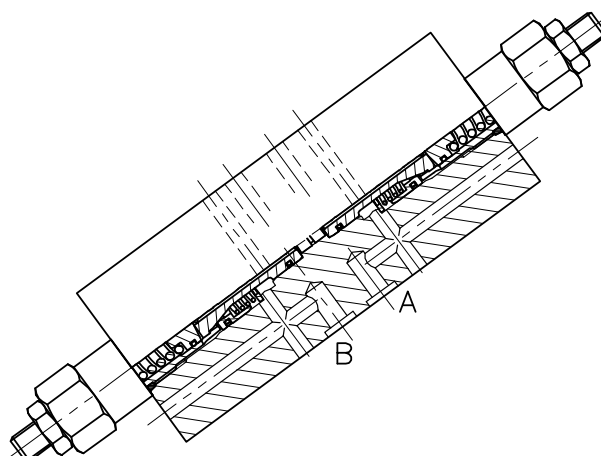
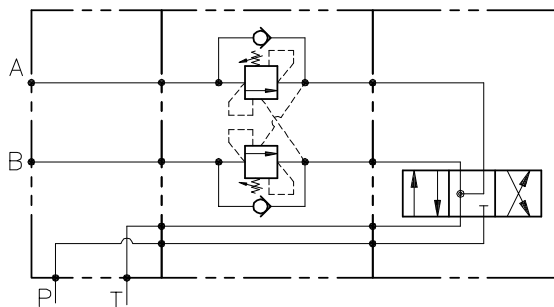
O | 6.2 : 1

Regolazione
Adjustment

X | Grano - Dowel
K | Piombata - Sealed

Collettore
Body

A | Acciaio
zincato
Zinc plated
steel



CARATTERISTICHE

PERFORMANCE

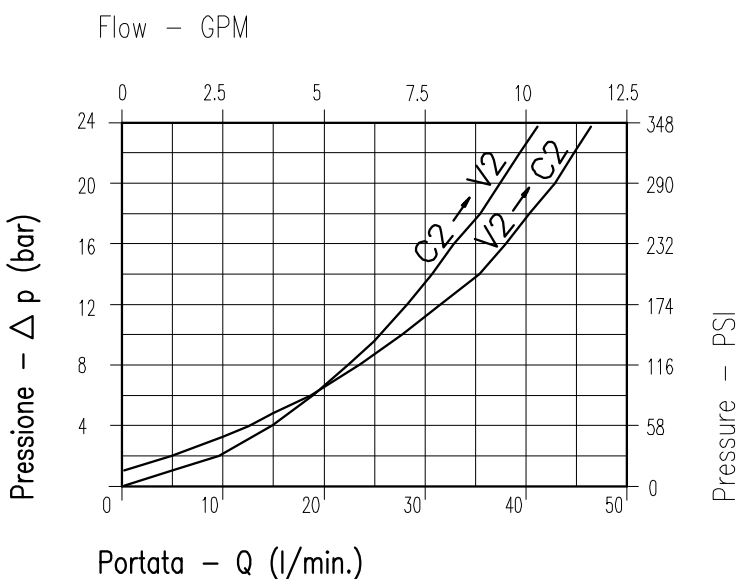
Luca nominale	DN 6	Rated size
Portata min/max	1/50 l/min - 0.26/12.5 GPM	Min/max flow-rate
Pressione max. di picco	350 bar - 5075 PSI	Max peak pressure
Pressione max. di taratura	350 bar - 5075 PSI	Max setting pressure
Rapporto di pilotaggio standard	4.25 : 1	Standard pilot ratio
Temperatura ambiente	-30°C + 50°C	Room temperature
Temperatura olio	-30°C + 80°C	Oil temperature
Filtraggio consigliato	30 micron	Recommended filtration
Peso		Weight
Peso		Weight

NOTE:

La taratura deve essere **1.3** volte maggiore della pressione indotta dal carico.
Valve should be set at **1.3** times load induced pressure.

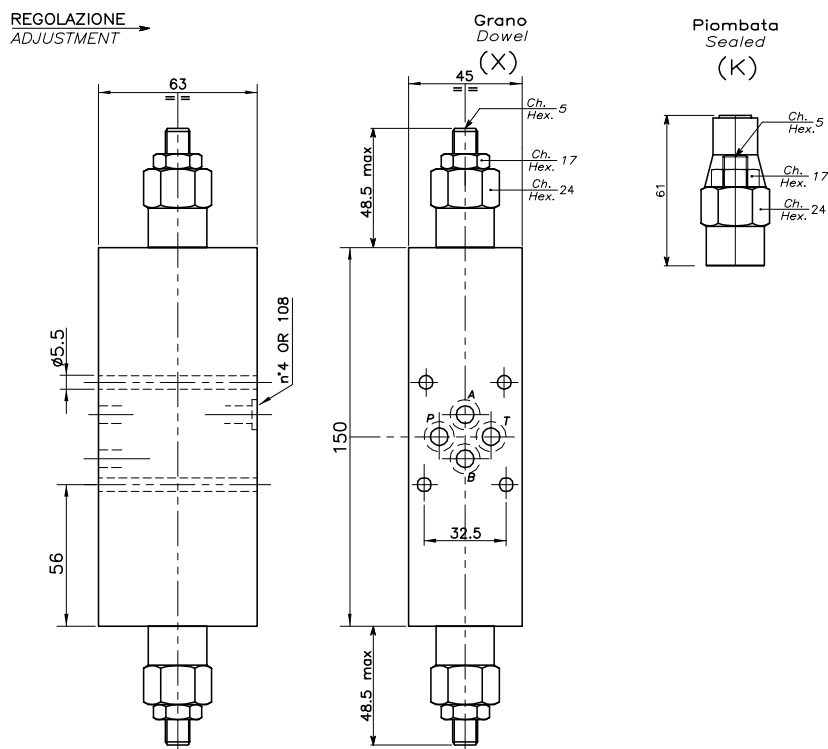
ESEMPIO/EXAMPLE:

Pressione di lavoro max:
Max working pressure:
350 bar / 1.3 = 270 bar



Viscosità olio 46 cSt a 50°C
Oil viscosity 46 cSt at 50°C

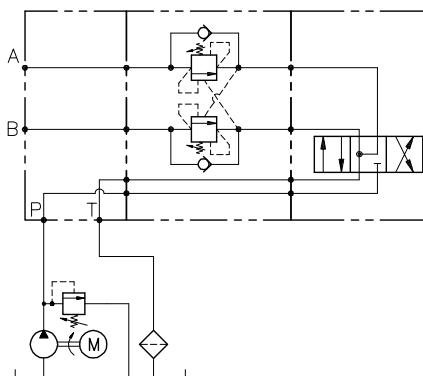
DOUBLE COUNTERBALANCE WITH SANDWICH INSTALLATION (CETOP)



DIMENSIONI DIMENSIONS

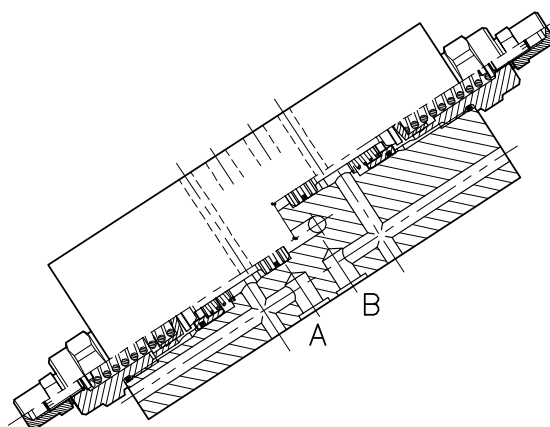
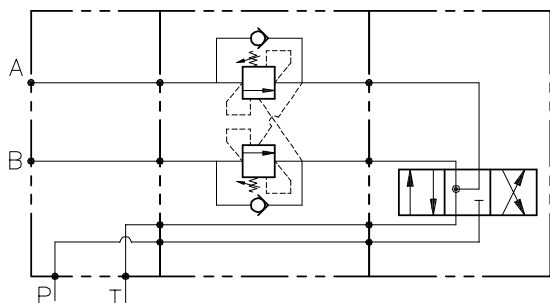
ESEMPIO TIPICO DI CIRCUITO TYPICAL CIRCUIT EXAMPLE

Campo taratura Setting range	Tipo flangia Flange type	Portata max Max flow-rate l/min - GPM
226	CETOP 03	50-12.5



CODICE DI ORDINAZIONE HOW TO ORDER

N01 . 226 . 0		X	0	A
Campo taratura / Setting range 226		Rapporto di pilotaggio Pilot ratios 0 4.25 : 1	Regolazione Adjustment X Grano - Dowel K Piombata - Sealed	Collettore Body A Acciaio zincato Zinc plated steel
Campo taratura 60÷350 bar (molla colore giallo) Setting range 60÷350 bar (yellow spring)				
Taratura standard (Q=5 l/1') Std. bar setting Q=5 l/1')	Incr. press. - bar giro/vite Pressure rise - turn of screw			
250 bar	(90)			
226		Collettore possibile in AL togliendo "A" Available aluminium body without "A"		



CARATTERISTICHE

Luce nominale
Portata min/max
Pressione max. di picco
Pressione max. di taratura
Rapporto di pilotaggio standard
Temperatura ambiente
Temperatura olio
Filtraggio consigliato
Peso
Peso

DN 12
1/90 l/min - 0.26/24 GPM
350 bar - 5075 PSI
350 bar - 5075 PSI
6.2 : 1
-30°C + 50°C
-30°C + 80°C
30 micron

PERFORMANCE

Rated size
Min/max flow-rate
Max peak pressure
Max setting pressure
Standard pilot ratio
Room temperature
Oil temperature
Recommended filtration
Weight
Weight

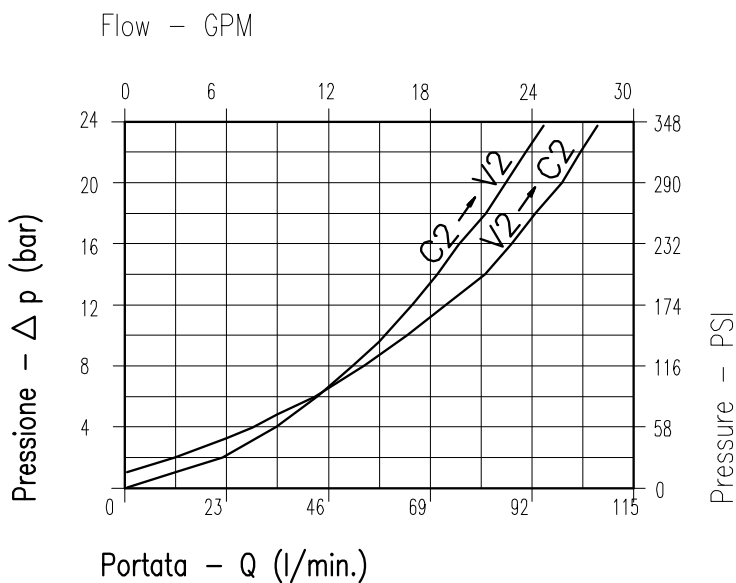
NOTE:

La taratura deve essere **1.3** volte maggiore della pressione indotta dal carico.

Valve should be set at **1.3** times load induced pressure.

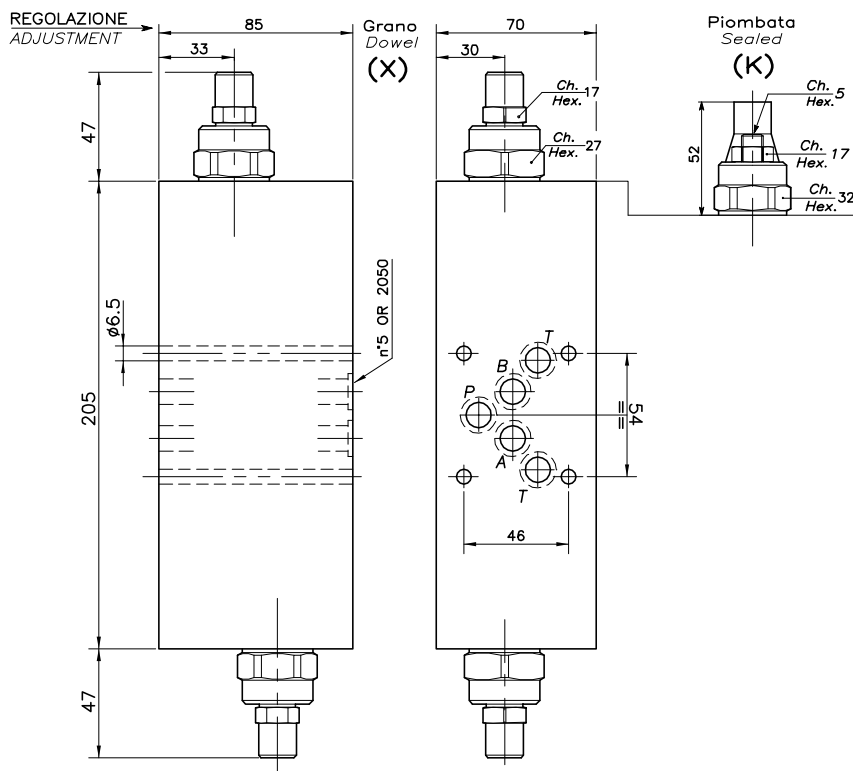
ESEMPIO/EXAMPLE:

Pressione di lavoro max:
Max working pressure:
350 bar / 1.3 = 270 bar



Viscosità olio 46 cSt a 50°C
Oil viscosity 46 cSt at 50°C

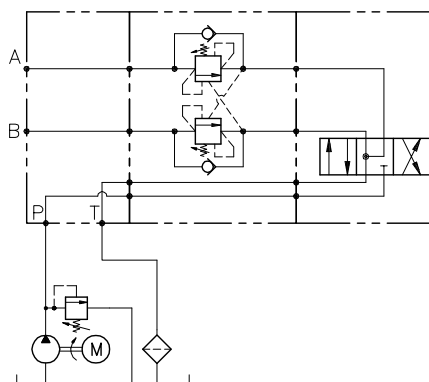
DOUBLE COUNTERBALANCE WITH SANDWICH INSTALLATION (CETOP)



DIMENSIONI DIMENSIONS

Campo taratura Setting range	Tipo flangia Flange type	Portata max Max flow-rate l/min - GPM
292	CETOP 05	90-24

ESEMPIO TIPICO DI CIRCUITO TYPICAL CIRCUIT EXAMPLE



CODICE DI ORDINAZIONE HOW TO ORDER

001 . 292 . 0 X 0 . A

Campo taratura / Setting range 292		Rapporto di pilotaggio Pilot ratios 0 6.2 : 1	Regolazione Adjustment X Grano - Dowel K Piombata - Sealed	Collettore Body A Acciaio zincato Zinc plated steel
Campo taratura 60÷350 bar (molla colore giallo) Setting range 60÷350 bar (yellow spring)	Taratura standard (Q=5 l/1') Std. bar setting Q=5 l/1') 250 bar	Incr. press. - bar giro/vite Pressure rise - turn of screw (125)		