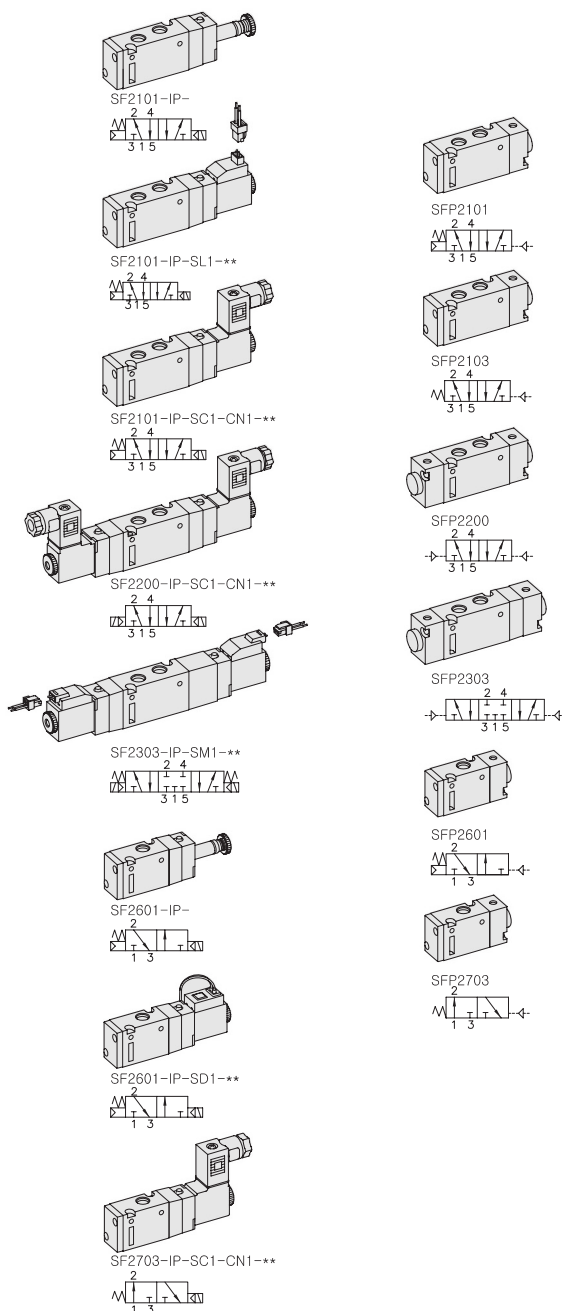


SF2000. 1/8

"F" FLEXIBLE Series
Solenoid / Pneumatic Valves

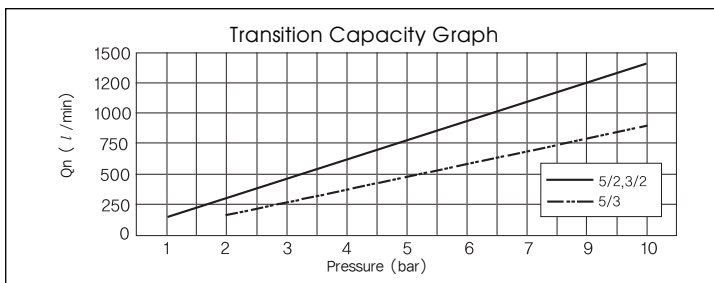
- 5/2, 5/3, 3/2 - 1/8
- 18mm Body Width
- Transition Flow 700ℓ/min (5bar)



** : Voltage Selection (see page 80)

SPECIFICATION

ITEM	SERIES	SOLENOID, PNEUMATIC	
		FUNCTION	
		5, 3 Port 2 Position	5 Port 3 Position
Fluids		Compressed Air & Inert Gases	
Pressure(bar)		1.5~10.0	2.0~10.0
Eff. Section Area(mm ²)-5bar		12.6	9.0
Ambient & Fluid Temp.		5~60°C (41~140°F)	
Response Time(5bar)		25ms or Less	35ms or Less
Max. Working Frequency		5c/sec	3c/sec
Lubrication		Not Required(Use ISO VG32 #)	
Manual Override		Push Button(Standard), Lever Lock(Option)	
Coil Insulation Class		F-Class or Equivalent	
Permissible Voltage Variation		±10% of Rated Voltage	
Off Min. Residual Voltage		AC:20% or Less / DC:10% or Less	
Power Consumption		Holding-AC:3.5VA(60Hz) / DC:2.5W	



- ### The Material of Parts
- Valve Body : Die-Cast Aluminium
 - Spool : Aluminium
 - Seals : NBR
 - Spring : Stainless
 - Cap : Zinc Pressure Die-Cast
 - Pilot Parts : Glass Filled Nylon
 - Armature : Stainless Steel
 - Armature Seals : Viton

Plug Connector With Clip

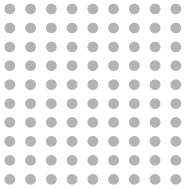
Ordering Code
 P62-06 (L : 600mm)
 P62-10 (L : 1,000mm)

* The specification on each item can be amended without any prenotice to improve a performance.
 * The specification on each item can be different from actual specification.

ORDERING NO.

SF2 1 0 1 - I P - SC1 - CN1 - A2

Valve Series	Function	Port Size & Thread	Return Method	Int/Ext. Pilot	Manual Operator	Solenoid Coil Type	Connector Type	Voltage
SF2 : Solenoid Valve	1 5/2 Single	0 G 1/8	0 None	I Internal Pilot	0 None	0 None	0 None	0 None
	2 5/2 Double	1 NPT 1/8	1 Air + Spring		P Push	SC1 3 Pin Connector Coil	CN1 Normal Connector	A2 AC 220V
	3 5/3 Closed Center		2 Air		Non-Locking	SG1 Grommet/Flying Leads	CD1 Connector With LED	A1 AC 110V
SFP2 : Pneumatic Valve	4 5/3 Open Center		3 Spring		L Lever Locking	SD1 Grommet/Flying Leads With LED	CZ1 Connector With LED & Surge Suppressor	A4 AC 24V
	5 5/3 Pressure Center					SL1 90 Degree Plug-in Wire Assembly With LED	D4 DC 24V	D4 DC 24V
	6 3/2 Normally Closed					SM1 180 Degree Plug-in Wire Assembly With LED	D2 DC 12V	D2 DC 12V
	7 3/2 Normally Open							

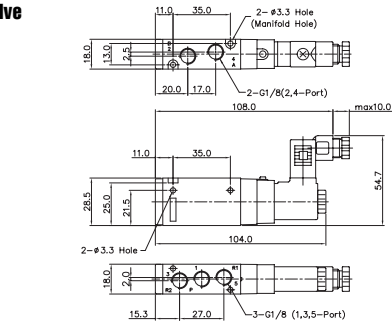


Solenoid & Pilot Actuated Spool Valves

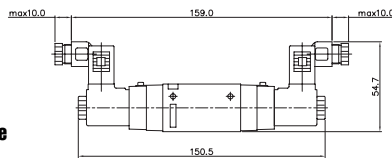
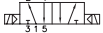
Port Thread **1/8**

5Port 2Position Solenoid Valve

Single Solenoid
SF2101-IP-SC1-CN1---

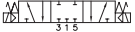


Double Solenoid
SF2200-IP-SC1-CN1---



5Port 3Position Solenoid Valve

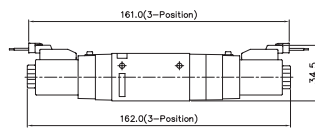
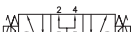
Closed Center
SF2303-IP-SM1---



Exhaust Center
SF2403-IP-SM1---



Pressure Center
SF2503-IP-SM1---

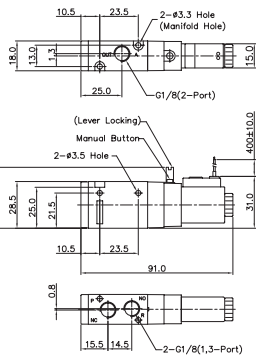


3Port 2Position Solenoid Valve

Normally Closed
SF2601-IP-SD1---

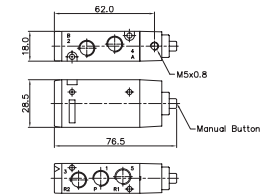


Normally Open
SF2701-IP-SD1---

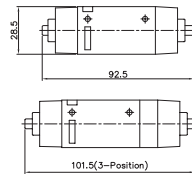


5Port 2Position Pneumatic Valve

Single Pneumatic
SFP2101

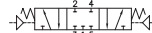


Double Pneumatic
SFP2200

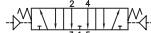


5Port 3Position Pneumatic Valve

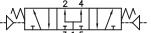
Closed Center
SFP2303



Exhaust Center
SFP2403



Pressure Center
SFP2503

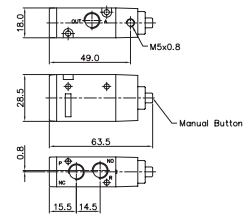


3Port 2Position Pneumatic Valve

Normally Closed
SFP2601



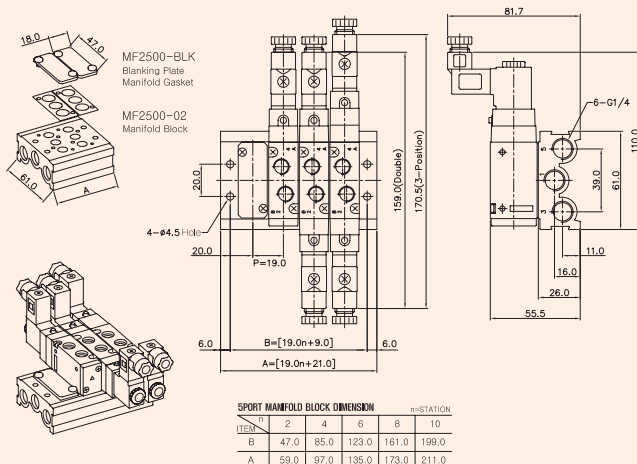
Normally Open
SFP2701



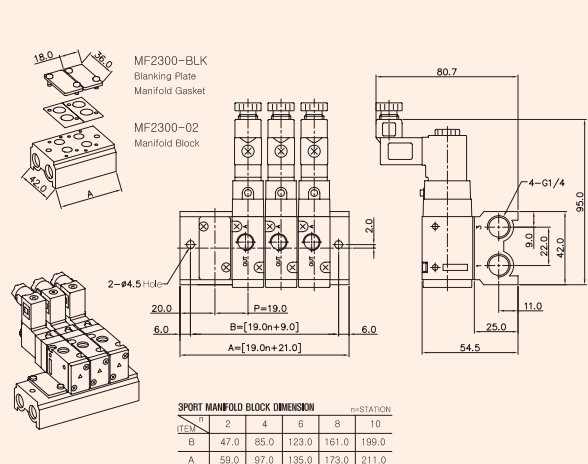
MF2000 MANIFOLD BLOCK

(SF2000 Solenoid & Pneumatic Valve Use)

5-Port Manifold Block MF2500-4



3-Port Manifold Block MF2300-4



Manifold Block Ordering Code

MF 2500		-		2	
Series	Manifold Station				
MF2500	5 Way	02	2-Station		
MF2300	3 Way	04	4-Station		
		06	6-Station		
		08	8-Station		
		10	10-Station		

Blanking Plate Ordering Code

MF2500-BLK	Blanking Plate. (Material : SCP1)
	Manifold Gasket. (Material : NBR)
MF2300-BLK	Blanking Plate. (Material : SCP1)
	Manifold Gasket. (Material : NBR)