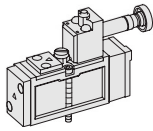


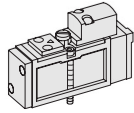
SIV200

ISO-0 15407-1 / VDMA 24563
Solenoid / Pneumatic Valves

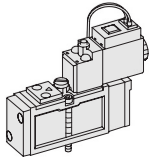
- 5/2, 5/3
- 18mm Body Width
- Sub-Base or Manifold Mounting Type
- Transition Flow 700ℓ/min (5bar)



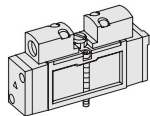
SIV211-IP-***



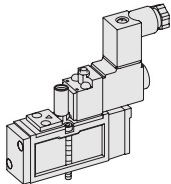
SIP211



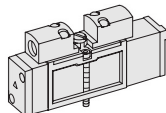
SIV211-IP-SD1-***



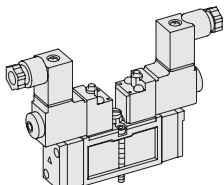
SIP220



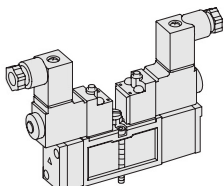
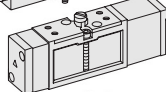
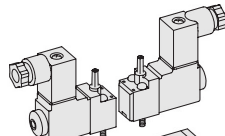
SIV211-EP-SC1-CN1-***



SIP233



SIV220-IP-SC1-CN1-***

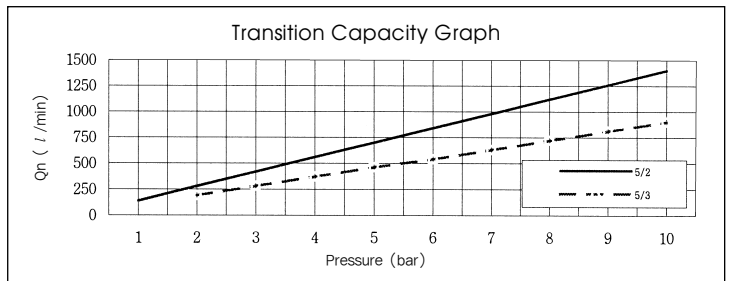


SIV233-IP-SC1-CN1-***

** : Voltage Selection (see page 80)

SPECIFICATION

ITEM	SERIES	SOLENOID, PNEUMATIC	
		5 Port 2 Position	5 Port 3 Position
Fluids		Compressed Air & Inert Gases	
Pressure(bar)		1.5~10.0	2.0~10.0
Eff. Section Area(mm ²)-5bar		12.0	8.5
Ambient & Fluid Temp.		5~60°C (41~140°F)	
Response Time(5bar)		25ms or Less	35ms or Less
Max. Working Frequency		5c/sec	3c/sec
Lubrication		Not Required(Use ISO VG32 #)	
Manual Override		Push Button(Standard), Lever Lock(Option)	
Coil Insulation Class		F-Class or Equivalent	
Permissible Voltage Variation		±10% of Rated Voltage	
Off Min. Residual Voltage		AC:20% or Less / DC:10% or Less	
Power Consumption		Holding-AC:3.5VA(60Hz) / DC:2.5W	



The Material of Parts

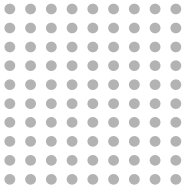
- Valve Body : Die-Cast Aluminium
- Spool : Aluminium
- Seals : NBR
- Spring : Stainless
- Cap : Zinc Pressure Die-Cast
- Pilot Parts : Glass Filled Nylon
- Armature : Stainless Steel
- Armature Seals : Viton

* The specification on each item can be amended without any prenotice to improve a performance.
* The specification on each item can be different from actual specification.

ORDERING NO.

SIV2 1 1 - I P - SC1 - CN1 - A2

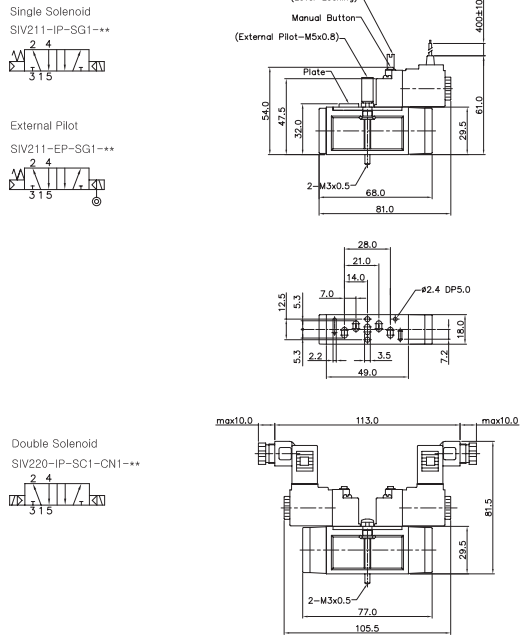
Valve Series	Function	Return Method	Int/Ext. Pilot	Manual Operator	Solenoid Coil Type	Connector Type	Voltage		
SIV2 : Solenoid Valve	1	5/2 Single	0	None	I	Internal Pilot	0	None	
	2	5/2 Double	1	Air + Spring	E	External Pilot	P	Push Non-Locking	
	3	5/3 Closed Center	2	Air	L	Lever Locking	SC1	3 Pin Connector Coil	
SIP2 : Pneumatic Valve	4	5/3 Open Center	3	Spring	SG1	Grommet/Flying Leads	CN1	Normal Connector	
	5	5/3 Pressure Center			SD1	Grommet/Flying Leads With LED	CD1	Connector With LED	
					SL1	90 Degree Plug-in Wire Assembly With LED	CZ1	Connector With LED & Surge Suppressor	
					SM1	180 Degree Plug-in Wire Assembly With LED		A4	AC 24V
								D4	DC 24V
							D2	DC 12V	



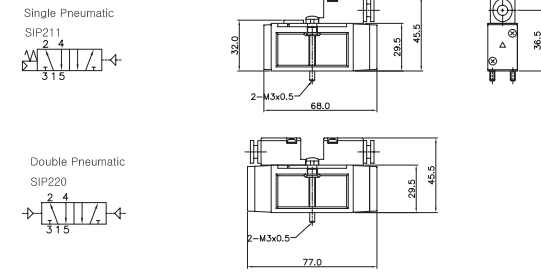
Solenoid & Pilot Actuated Spool Valves

18mm Body Width

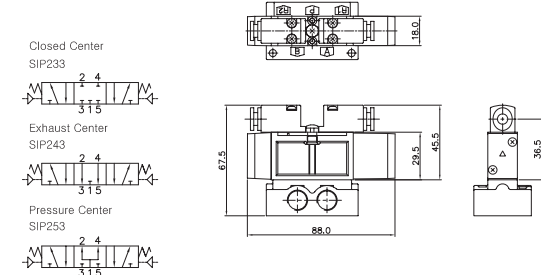
5Port 2Position Solenoid Valve



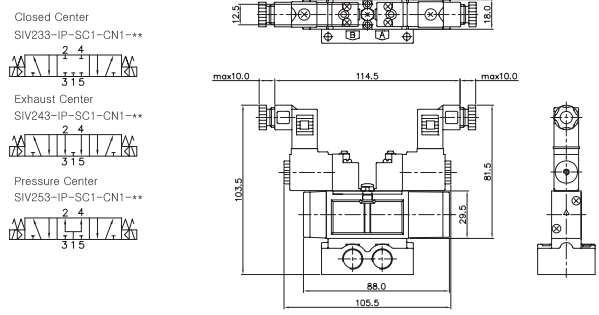
5Port 2Position Pneumatic Valve



5Port 3Position Pneumatic Valve



5Port 3Position Solenoid Valve

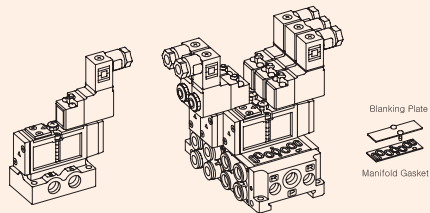


Sub Base Ordering Code

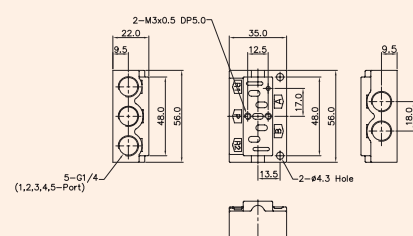
SIB2 1 - S		
Base Series	Port & Thread	Function
SIB2	0 None	S Single Station Sub Base, 1/4 Port Without Pilot Ports
SIV200 Solenoid Valve	1 G	SP Single Station Sub Base, 1/4 Port With Pilot Ports
	2 NPT	DB Single Station Sub Base, 1/8 Port Without Pilot Ports
		DC6 Double Modular Sub Base, Ø6 One-Touch Fitting
		E End Cover, 1/8 Port
		EB End Blanking Cover

SIB20 SINGLE, DOUBLE SUB BASE

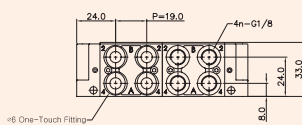
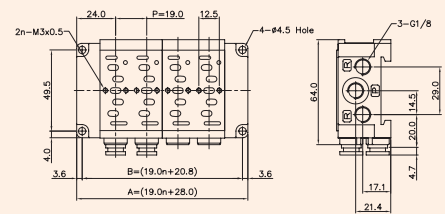
(SIV200 Solenoid & Pneumatic Valve Use Sub Base)



Single Station Sub Base Dimension



Double Modular Sub Base Dimension



DOUBLE MODULAR SUB BASE DIMENSION --STATION					
ITEM	2	4	6	8	10
B	58.8	96.8	134.8	172.8	210.8
A	66.0	104.0	142.0	180.0	218.0

Ordering Code SIB20-BLK		Blanking Plate (Material: STS304)
		Manifold Gasket. (Material: NBR)
Ordering Code SIB21-E		End Cover, 1/8 (Material: Al)
Ordering Code SIB20-EB		End Blanking Cover (Material: Al)
Ordering Code SIB21-DB		Double Modular Sub Base, 1/8 (Material: Al)
Ordering Code SIB20-DC6		Double Modular Sub Base Ø6 one-touch fitting (Material: Al)