

CARATTERISTICHE

Luce nominale min/max
Portata min/max
Pressione di lavoro max.
Temperatura ambiente
Temperatura olio
Filtraggio consigliato

Vedi pag. 2

Vedi pag. 2

350 bar - 5075 PSI

-30°C + 50°C

-30°C + 80°C

30÷50

PERFORMANCE

Min/max rated size

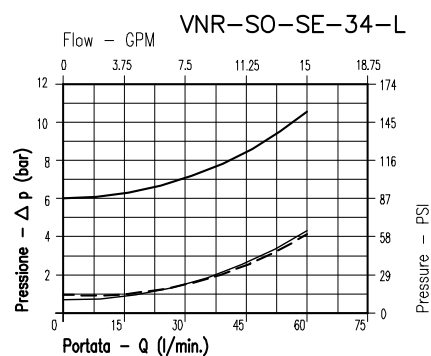
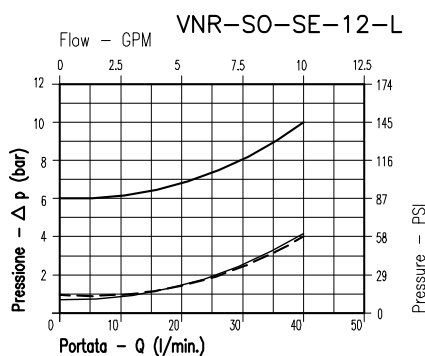
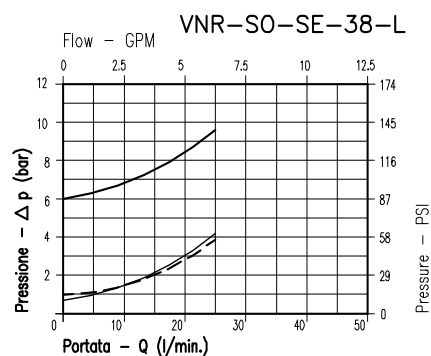
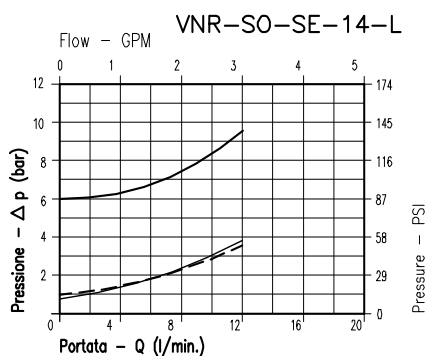
Min/max flow-rate

Max working pressure

Room temperature

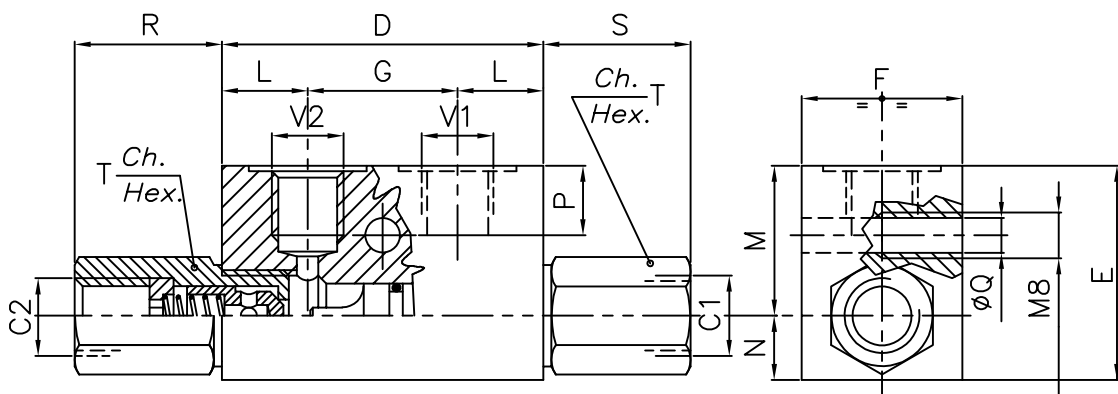
Oil temperature

Recommended filtration



— 8Bar Flusso libero (free flow)
- - - 1Bar Flusso libero (free flow)
— Flusso pilotato (piloted flow)

Viscosità olio 46 cSt a 50°C
Oil viscosity 46 cSt at 50°C



SOLO PER VERSIONI 1/4" E 3/8" GAS / ONLY FOR 1/4" 3/8" GAS VERSION

**DIMENSIONI
DIMENSIONS**

NUMERO VALVOLA VALVE NUMBER	D	E	F	G	L	M	N	P	Q	R	S	T	Attacchi Port size V2-C2 V1-C1 GAS (BSPP)	Luce nomi- nale Rated size DN	Rapporto di pilotaggio Pilot ratio	Portata max max flow-rate l/min-GPM
026	64	40	30	36	14	27	13	8	6,5	27	27	22	1/4"	6	6:1	12-3.2
027													3/8"	8	6:1	23-6
028	80	50	35	38	21	34	16	15	6,5	32	26	27	1/2"	11	4:1	40-10.6
029	100	60	40	50	25	39	21	15	8,5	41	33	38	3/4"	15	3.5:1	60-15.8

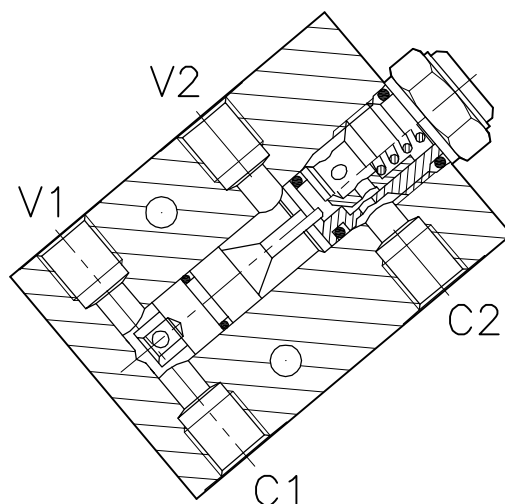
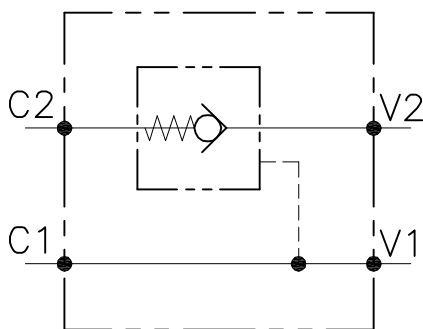
**CODICE DI ORDINAZIONE
HOW TO ORDER**

N03 027 0 W 0 . A

Numero valvola / Valve number		Inizio apertura Cracking pressure	Materiale collettore body material
026	A	J 1 bar Molla (colore nero) Spring (black)	Acciaio zincato Zinc plated steel
027	O	W 6÷8 bar Molla (colore giallo) Spring (yellow)	

003 029 0 W 0 . A

Numero valvola / Valve number		Inizio apertura Cracking pressure	Materiale collettore body material
028	A	J 1 bar Molla (colore nero) Spring (black)	Acciaio zincato Zinc plated steel
029	O	W 6÷8 bar Molla (colore giallo) Spring (yellow)	



CARATTERISTICHE

Luce nominale min/max	Vedi Pag. 6
Portata min/max	Vedi Pag. 6
Pressione di lavoro max.	350 bar - 5075 PSI
Rapporto di pilotaggio	4 : 1
Temperatura ambiente	-30°C + 50°C
Temperatura olio	-30°C + 80°C
Filtraggio consigliato	50 micron
Peso	0.459 Kg. 1/4" GAS
Peso	0.750 Kg. 3/8" GAS
Peso	0.724 Kg. 1/2" GAS

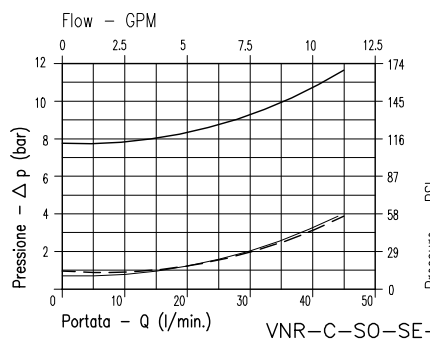
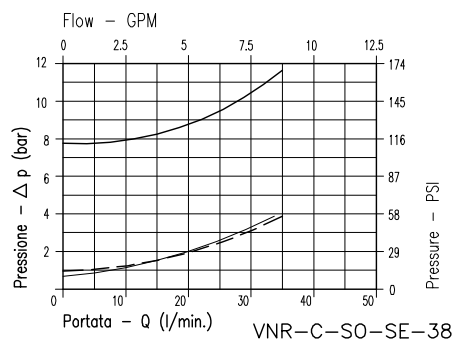
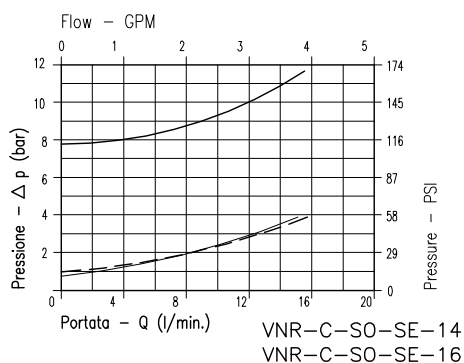
PERFORMANCE

Min/max rated size
Min/max flow-rate
Max working pressure
Pilot ratio
Room temperature
Oil temperature
Recommended filtration
Weight
Weight
Weight

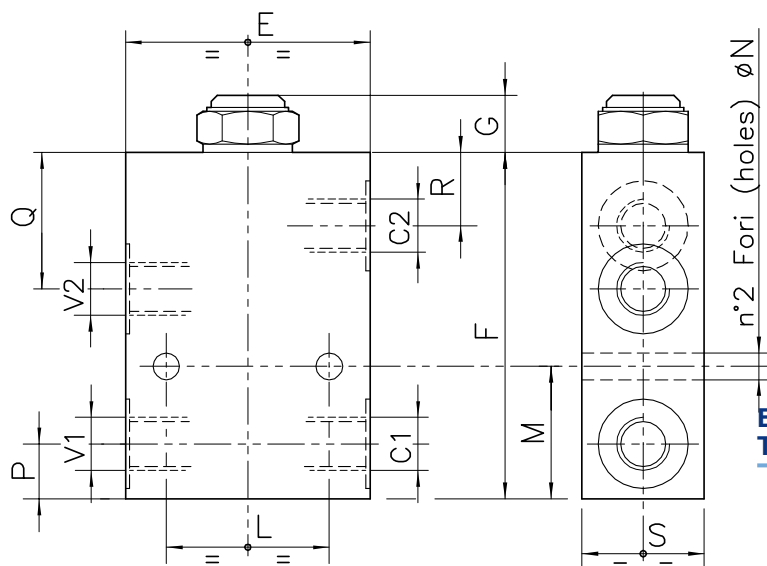
8Bar Flusso libero
(free flow)

1Bar Flusso libero
(free flow)

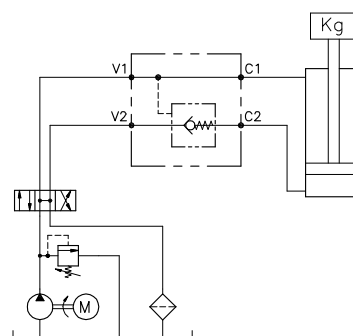
Flusso pilotato
(piloted flow)



Viscosità olio 46 cSt a 50°C / Oil viscosity 46 cSt at 50°C



**ESEMPIO TIPICO DI CIRCUITO
TYPICAL CIRCUIT EXAMPLE**



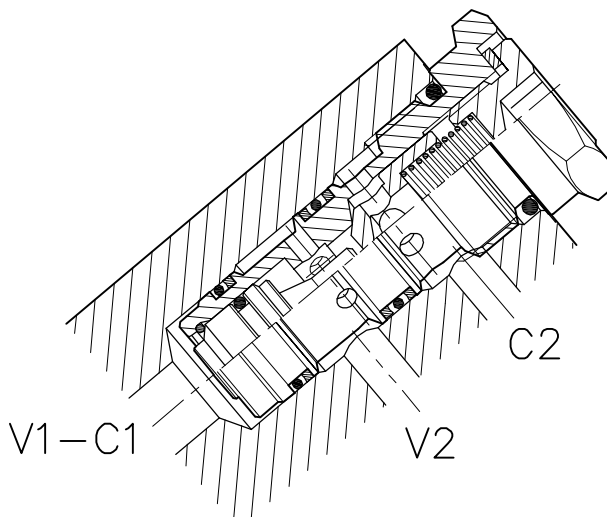
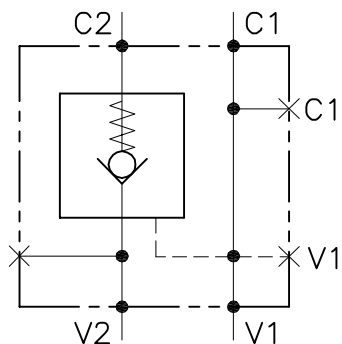
**DIMENSIONI
DIMENSIONS**

NUMERO VALVOLA VALVE NUMBER	E	F	G	L	M	N	P	Q	R	S	Attacchi Port size V2-C2 V1-C1 GAS (BSP)	Luce nominale Rated size DN	Portata max Max flow-rate l/min - GPM
036	60	85	15	40	32.5	6.5	13.5	33.5	18	30	1/4"	4	15-4
038	70	95	18	40	40	8.5	19	38	20.5	35	3/8"	6	35-9.2
039	70	95	18	40	40	8.5	19	38	20.5	35	1/2"	8	45-12

**CODICE DI ORDINAZIONE
HOW TO ORDER**

Numero valvola / Valve number		Inizio apertura Cracking pressure	Materiale collettore body material
003	036	0	J
036	A	1 bar	Acciaio Zincato
038	O	6÷8 bar	Zinc Plated Steel
039			

036
 A O-RING sul pist. di pilotaggio
 Pilot piston O-RING
038
 O Senza O-RING sul pist. di pilotaggio
 No pilot piston O-RING
0
 J 1 bar
Molla (colore nero)
Spring (black)
 W 6÷8 bar
Molla (colore giallo)
Spring (yellow)

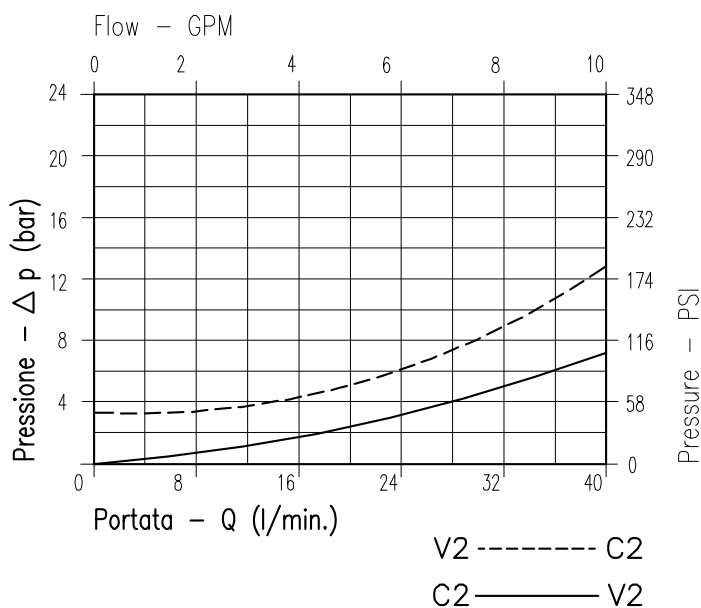


CARATTERISTICHE

PERFORMANCE

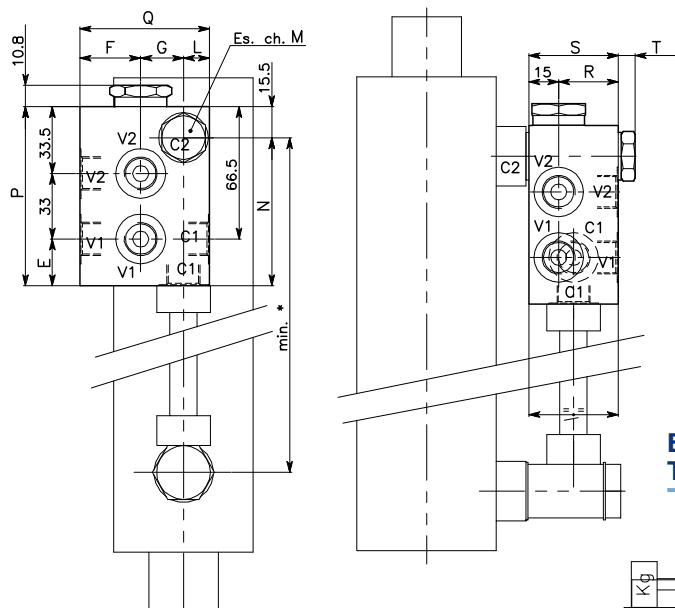
Luce nominale	DN 6
Portata min/max	1/40 l/min. - 0.26/10.6 GPM
Pressione di lavoro max.	350 bar - 5075 PSI
Rapporto di pilotaggio	3 : 1
Temperatura ambiente	-30°C + 50°C
Temperatura olio	-30°C + 80°C
Filtraggio consigliato	50 micron
Peso	0.865 Kg 3/8" GAS
Peso	1.179 Kg 1/2" GAS

Rated size
Min/max flow-rate
Max working pressure
Pilot ratio
Room temperature
Oil temperature
Recommended filtration
Weight
Weight

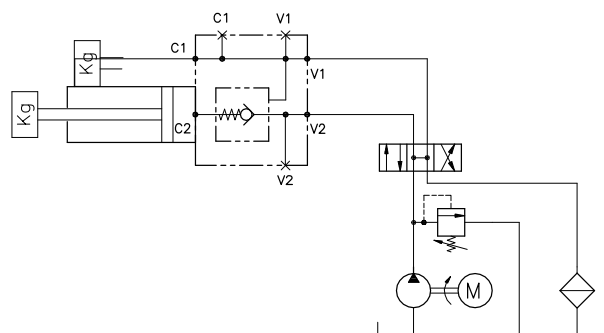


Viscosità olio 46 cSt a 50°C
Oil viscosity 46 cSt at 50°C

CARTRIDGE PILOT CHECK
VALVE WITH FLANGEABLE BODY



ESEMPIO TIPICO DI CIRCUITO
TYPICAL CIRCUIT EXAMPLE



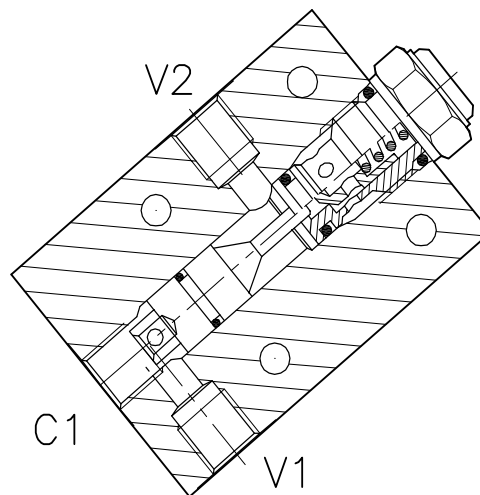
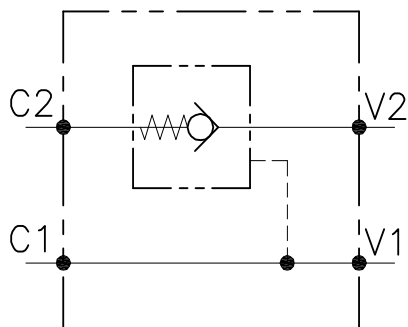
DIMENSIONI
DIMENSIONS

NUMERO VALVOLA VALVE NUMBER	E	F	G	L	M	N	P	Q	R	S	T	Attacchi Port size V2-C2 V1-C1 GAS (BSP)
233	23.5	30.5	21.5	13	22	74.5	90	65	30	45	9	3/8"
251	28.5	33	26	16	27	79.5	95	75	35	50	10	1/2"

CODICE DI ORDINAZIONE
HOW TO ORDER

003 233 0 J 0 . A

Numero valvola / Valve number	A	Inizio apertura Cracking pressure	Materiale collettore Body material
233	O-RING sul pist. di pilotaggio Pilot piston O-RING	J 1 bar Molla (colore nero) Spring (black)	Acciaio zincato Zinc plated steel
251	O Senza O-RING sul pist. di pilotaggio No pilot piston O-RING	W 6-8 bar Molla (colore giallo) Spring (yellow)	



CARATTERISTICHE

Luce nominale min/max	Vedi Pag. 10
Portata min/max	Vedi Pag. 10
Pressione di lavoro max.	350 bar - 5075 PSI
Rapporto di pilotaggio	4 : 1
Temperatura ambiente	-30°C + 50°C
Temperatura olio	-30°C + 80°C
Filtraggio consigliato	50 micron
Peso	0.459 Kg. 1/4" GAS
Peso	0.750 Kg. 3/8" GAS
Peso	0.724 Kg. 1/2" GAS

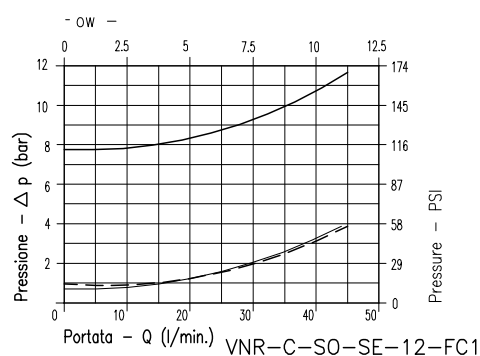
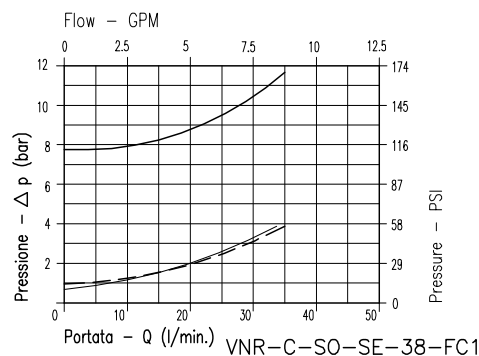
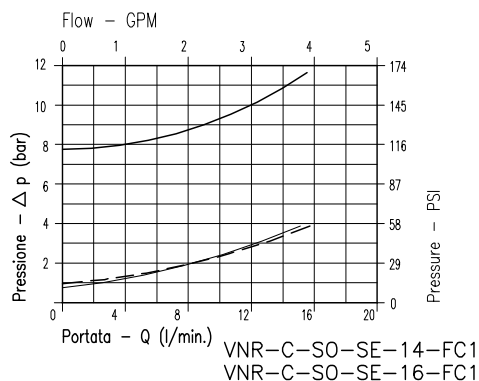
PERFORMANCE

Min/max rated size
Min/max flow-rate
Max working pressure
Pilot ratio
Room temperature
Oil temperature
Recommended filtration
Weight
Weight
Weight

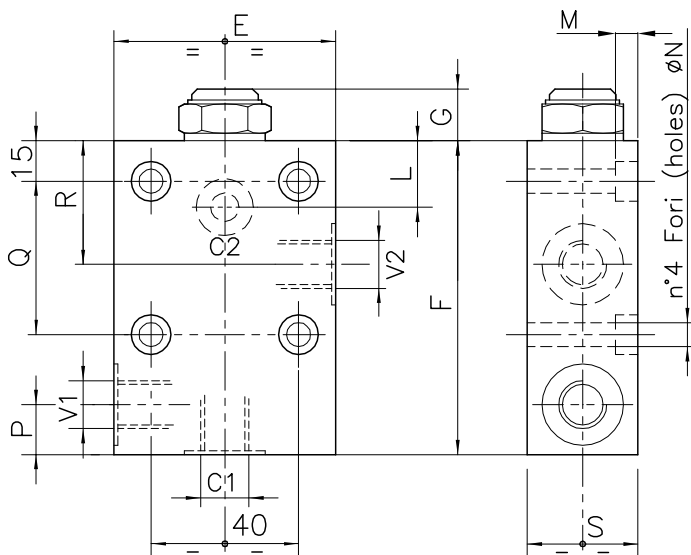
8Bar Flusso libero
(free flow)

1Bar Flusso libero
(free flow)

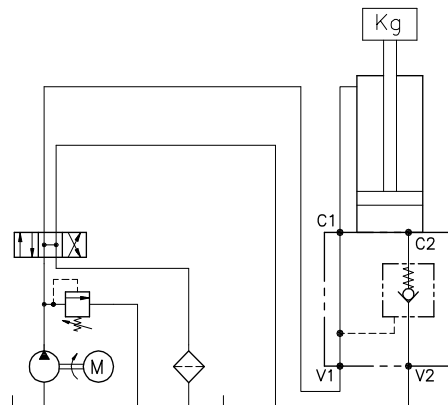
Flusso pilotato
(piloted flow)



Viscosità olio 46 cSt a 50°C / Oil viscosity 46 cSt at 50°C



**ESEMPIO TIPICO DI CIRCUITO
TYPICAL CIRCUIT EXAMPLE**



**DIMENSIONI
DIMENSIONS**

NUMERO VALVOLA VALVE NUMBER	E	F	G	L	M	N	P	Q	R	S	Attacchi Port size V2-C2 V1-C1 GAS (BSPP)	Luce nominale Rated size	Portata max Max flow-rate
											DN	l/min - GPM	
040	60	85	15	19	6	6,5	13,5	37,5	33,5	30	1/4"	4	15-4
042	70	95	18	20,5	3	8,5	19	40	38	35	3/8"	8	35-9.2
043	70	95	18	20,5	3	8,5	19	40	38	35	1/2"	8	45-12

**CODICE DI ORDINAZIONE
HOW TO ORDER**

003	040	0	J	0	.A
Numero valvola / Valve number			Inizio apertura Cracking pressure		Materiale collettore Body material
040	A	O-RING sul pist. di pilotaggio Pilot piston O-RING	J	1 bar Molla (colore nero) Spring (black)	Acciaio zincato Zinc plated steel
042	O	Senza O-RING sul pist. di pilotaggio No pilot piston O-RING	W	6÷8 bar Molla (colore giallo) Spring (yellow)	
043					