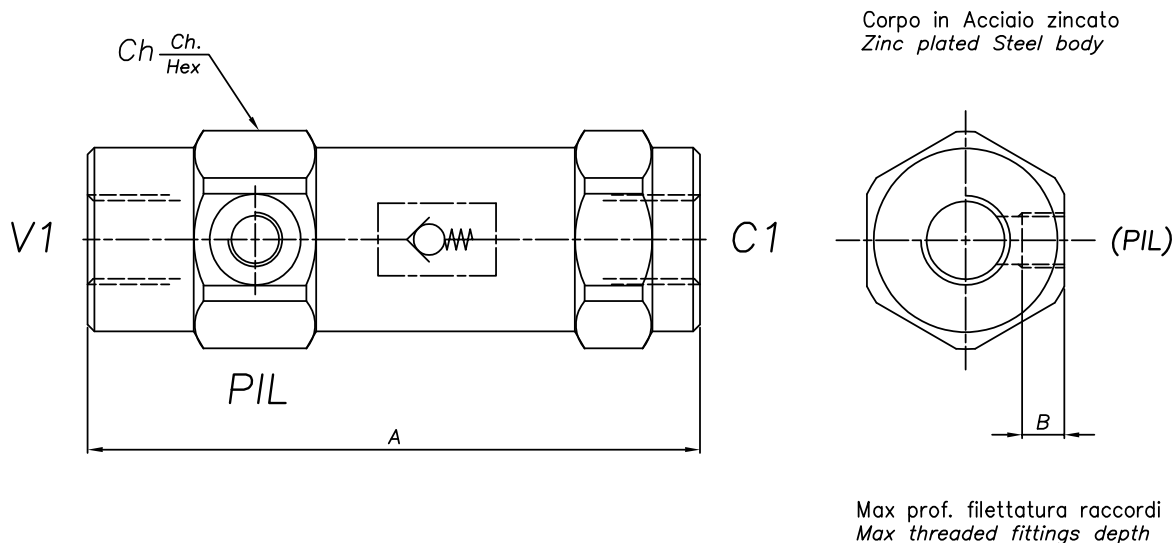


CARATTERISTICHE

Luce nominale	1/4" - 3/8" - 1/2" - 3/4"
Portata min/max	Vedi tabella/see table
Pressione max. di picco	Vedi tabella/see table
Temperatura ambiente	-30°C + 50°C
Temperatura olio	-30°C + 80°C
Filtraggio consigliato	30
Rapporto di pilotaggio	Vedi tabella/see table
Peso	Vedi tabella/see table

PERFORMANCE

Rated size
Min/max flow-rate
Max peak pressure
Room temperature
Oil temperature
Recommended filtration
Pilot ratio
Weight



DIMENSIONI DIMENSIONS

Cod. ord. ord. cod.	Descrizione description	A	Ch	B	PL	V1 - C1	Portata Max	Pressione Max	Peso	Rap di pilotaggio
							max Flow	max pressure		
		mm	mm	mm	GAS	GAS	l/min	bar		
461	VNR-SE-PIL-14	103	36	12	1/4"GAS	1/4"GAS	15	350	0,7	8,5:1
462	VNR-SE-PIL-38	109	40	12	1/4"GAS	3/8"GAS	30	300	0,9	6:1
463	VNR-SE-PIL-12	122	42	12	1/4"GAS	1/2"GAS	45	300	1,1	4,5:1
464	VNR-SE-PIL-34	131	55	14	1/4"GAS	3/4"GAS	80	250	2	4,5:1

CODICE DI ORDINAZIONE HOW TO ORDER

003 461 0 0 0

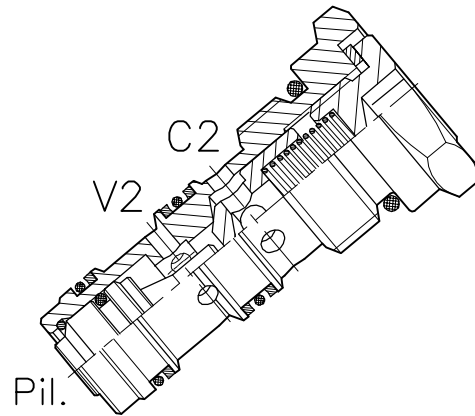
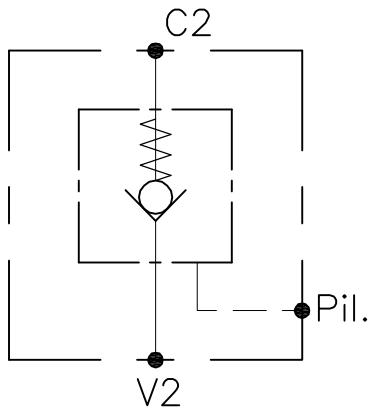
Numero valvola / Valve number

461

462

463

464

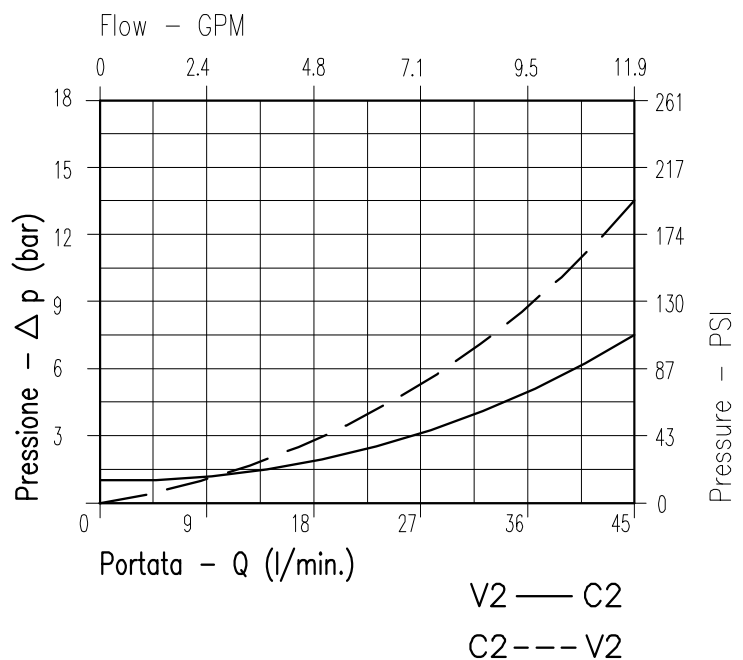


CARATTERISTICHE

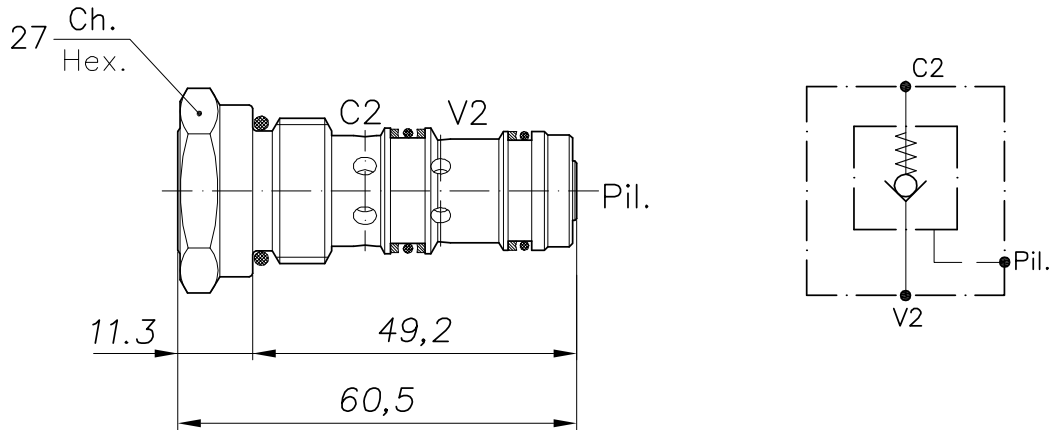
Luce nominale	DN 8
Portata min/max	1/45 l/min - 0.26/11.9 GPM
Pressione di lavoro max.	350 bar - 5075 PSI
Rapporto di pilotaggio	3 : 1
Temperatura ambiente	-30°C + 50°C
Temperatura olio	-30°C + 80°C
Filtraggio consigliato	50 micron
Coppia di serraggio	50÷59 Nm
Peso	0.122 Kg

PERFORMANCE

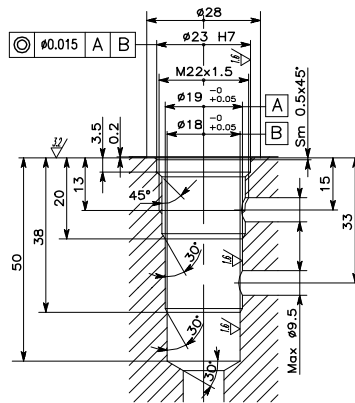
Rated size
Min/max flow-rate
Max working pressure
Pilot ratio
Room temperature
Oil temperature
Recommended filtration
Tightening torque
Weight



Viscosità olio 46 cSt a 50°C - Oil viscosity 46 cSt at 50°C



CAVITA' CAVITY CE.017.N

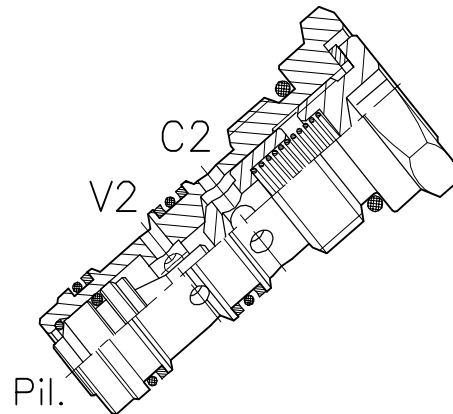
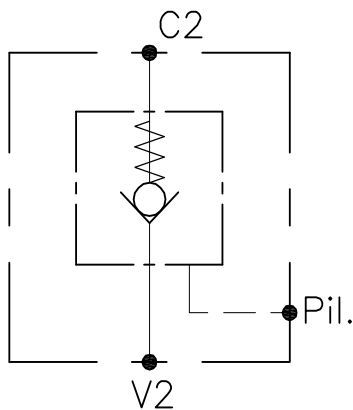


Si raccomanda l'esatta esecuzione della sede
The valve seat should be perfectly tooled

CODICE DI ORDINAZIONE HOW TO ORDER

003 265 0 J 0

Inizio apertura Cracking pressure	
J	1 bar Molla (colore nero) Spring (black)
W	6÷8 bar Molla (colore giallo) Spring (yellow)
U	8÷10 bar Molla (colore rosso) Spring (red)

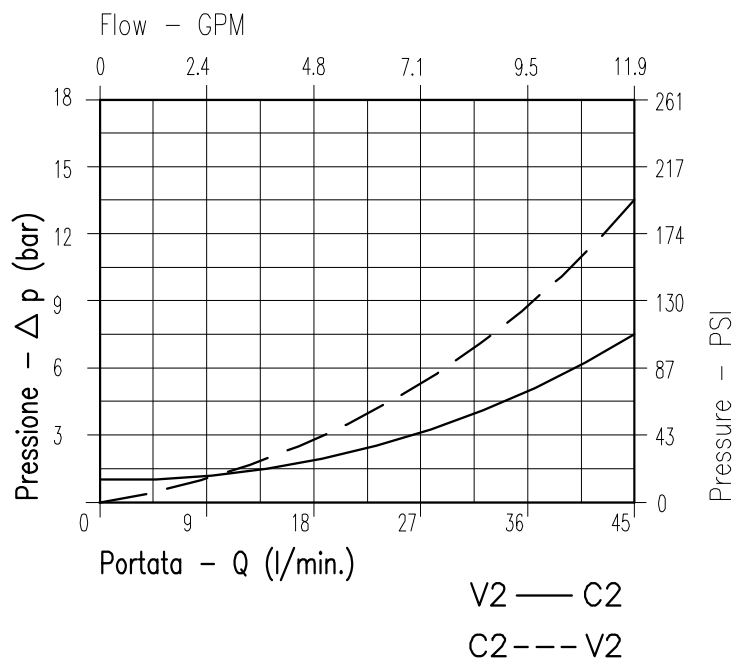


CARATTERISTICHE

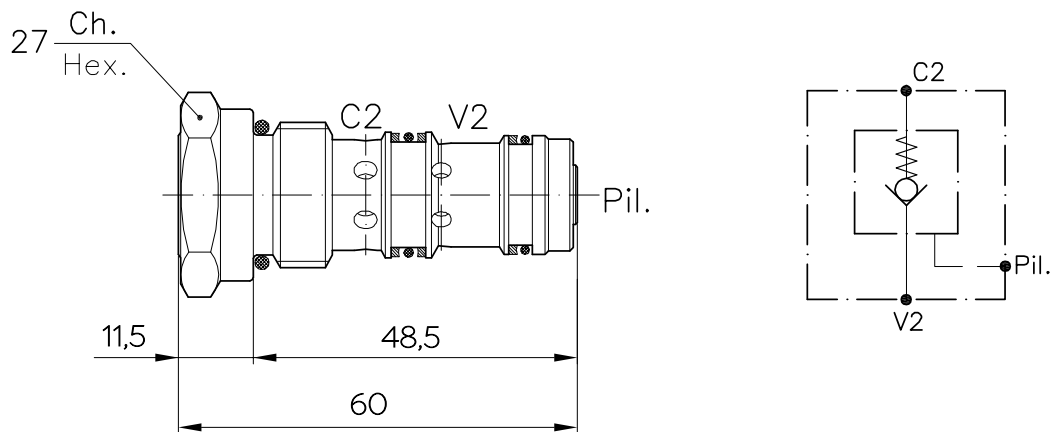
Luce nominale	DN 8
Portata min/max	1/45 l/min - 0.26/11.9 GPM
Pressione di lavoro max.	350 bar - 5075 PSI
Rapporto di pilotaggio	3 : 1
Temperatura ambiente	-30°C + 50°C
Temperatura olio	-30°C + 80°C
Filtraggio consigliato	50 micron
Coppia di serraggio	50÷59 Nm
Peso	0.122 Kg

PERFORMANCE

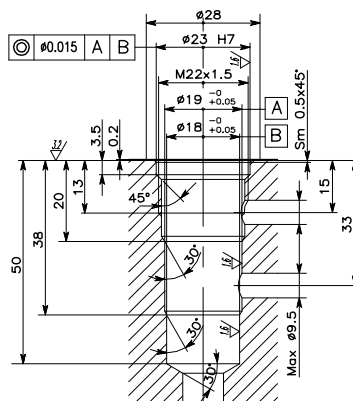
Rated size
Min/max flow-rate
Max working pressure
Pilot ratio
Room temperature
Oil temperature
Recommended filtration
Tightening torque
Weight



Viscosità olio 46 cSt a 50°C - Oil viscosity 46 cSt at 50°C



CAVITA' CAVITY CE.017.N

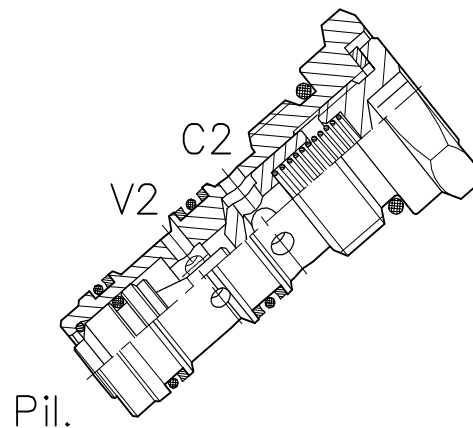
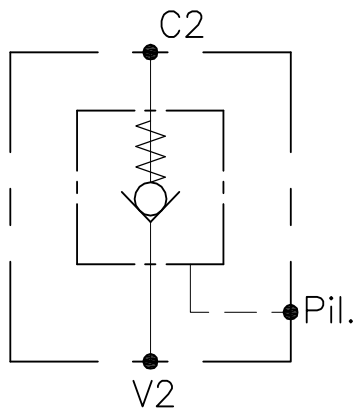


Si raccomanda l'esatta esecuzione della sede
The valve seat should be perfectly tooled

**CODICE DI ORDINAZIONE
HOW TO ORDER**

003 362 A W 0

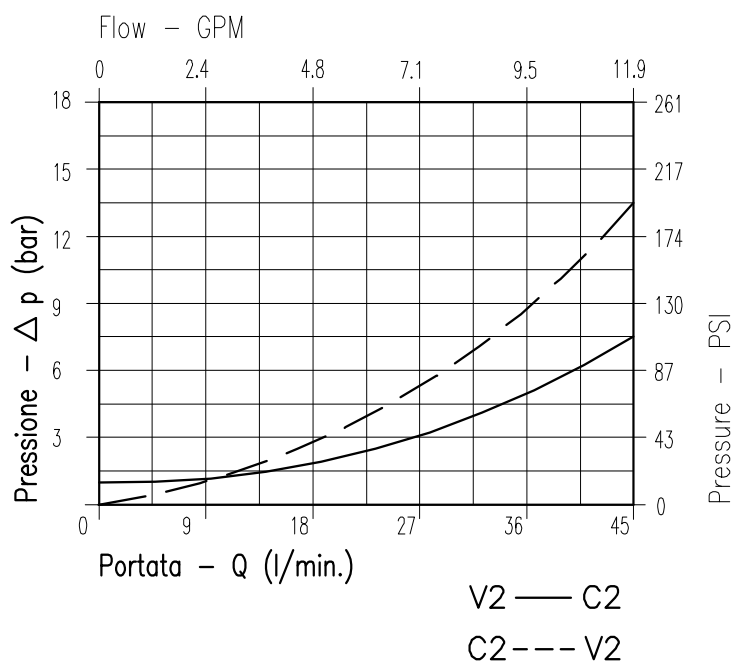
	Inizio apertura Cracking pressure
W	6÷8 bar Molla (colore giallo) Spring (yellow)



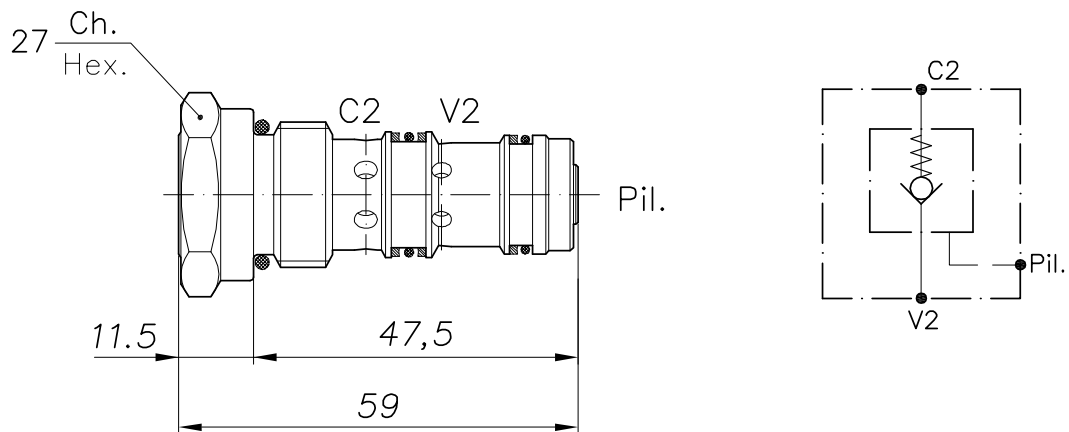
CARATTERISTICHE

PERFORMANCE

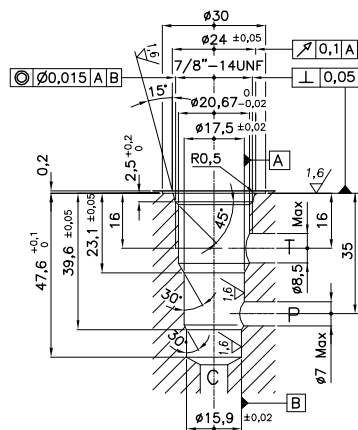
Luce nominale	DN 8	Rated size
Portata min/max	1/45 l/min - 0.26/11.9 GPM	Min/max flow-rate
Pressione di lavoro max.	350 bar - 5075 PSI	Max working pressure
Rapporto di pilotaggio	3 : 1	Pilot ratio
Temperatura ambiente	-30°C + 50°C	Room temperature
Temperatura olio	-30°C + 80°C	Oil temperature
Filtraggio consigliato	50 micron	Recommended filtration
Coppia di serraggio	50÷59 Nm	Tightening torque
Peso	0.122 Kg	Weight



Viscosità olio 46 cSt a 50°C - Oil viscosity 46 cSt at 50°C



CAVITA' CAVITY CE.071.N

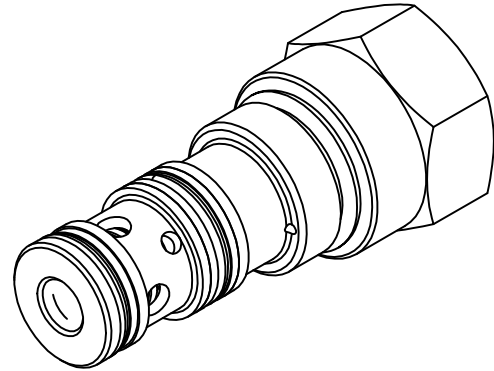
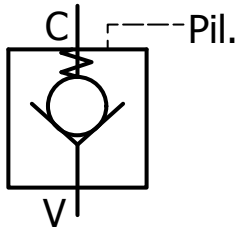


Si raccomanda l'esatta esecuzione della sede
The valve seat should be perfectly tooled

CODICE DI ORDINAZIONE HOW TO ORDER

003 335 0 J 0

	Inizio apertura Cracking pressure
J	1 bar Molle (colore nero) Spring (black)
W	6÷8 bar Molle (colore giallo) Spring (yellow)

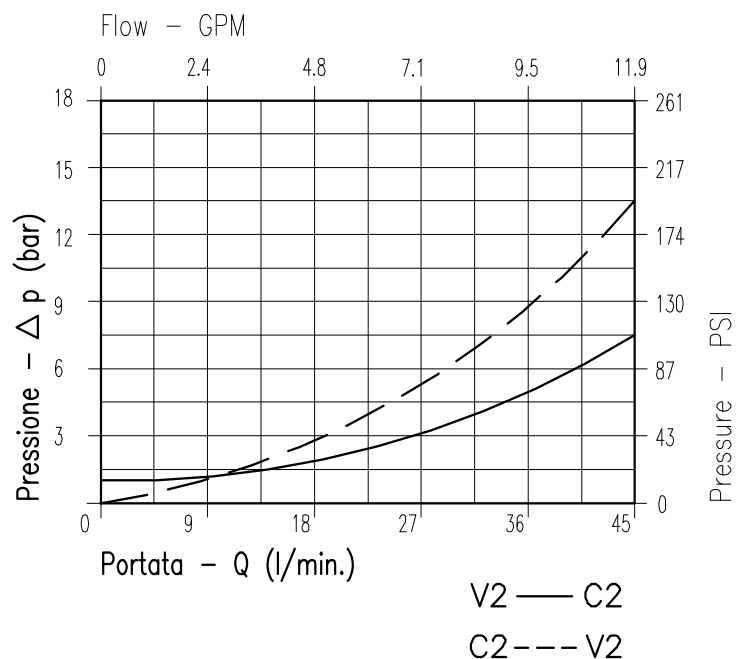


CARATTERISTICHE

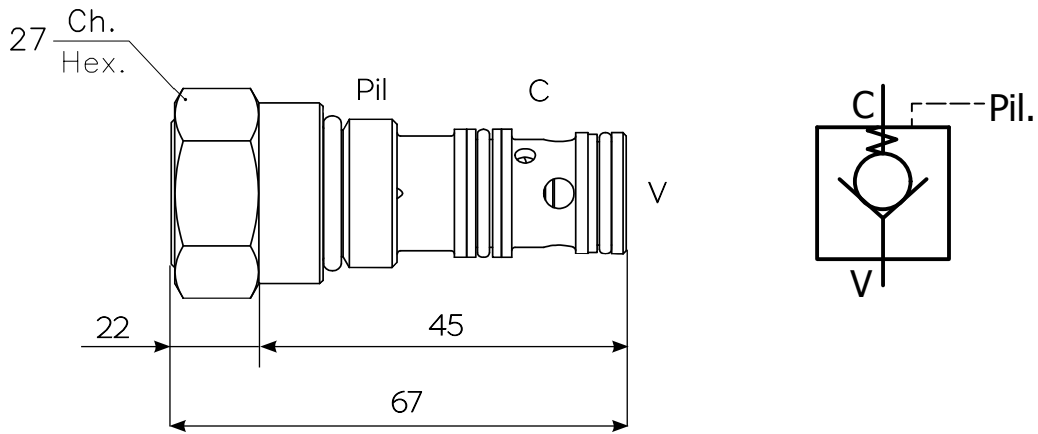
Luce nominale	DN 8
Portata min/max	1/45 l/min - 0.26/11.9 GPM
Pressione di lavoro max.	350 bar - 5075 PSI
Rapporto di pilotaggio	3 : 1
Temperatura ambiente	-30°C + 50°C
Temperatura olio	-30°C + 80°C
Filtraggio consigliato	50 micron
Coppia di serraggio	50÷59 Nm
Peso	0.122 Kg

PERFORMANCE

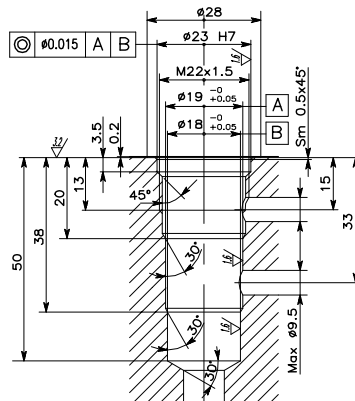
Rated size
Min/max flow-rate
Max working pressure
Pilot ratio
Room temperature
Oil temperature
Recommended filtration
Tightening torque
Weight



Viscosità olio 46 cSt a 50°C - Oil viscosity 46 cSt at 50°C



CAVITA' CAVITY CE.017.N



Si raccomanda l'esatta esecuzione della sede
The valve seat should be perfectly tooled

**CODICE DI ORDINAZIONE
HOW TO ORDER**

003 269 A J 0

	Inizio apertura Cracking pressure
J	1 bar
	Molla (colore nero) Spring (black)