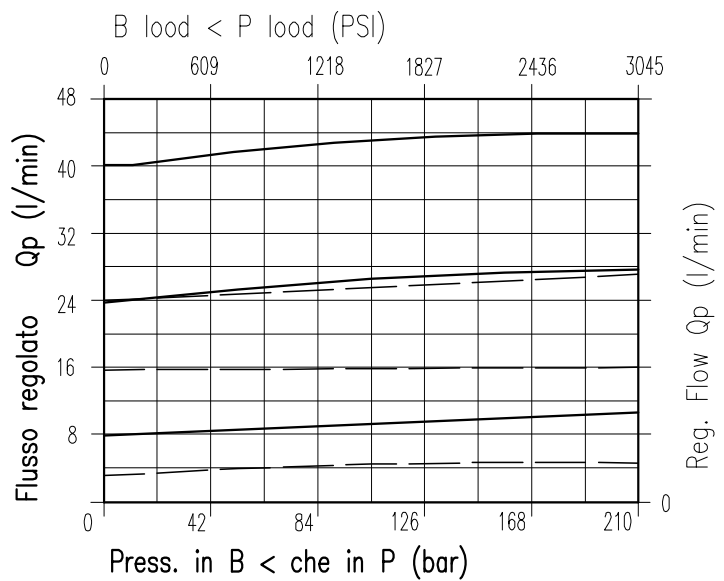


CARATTERISTICHE

PERFORMANCE

Luce nominale	DN 6	Rated size
Portata min/max	1/45 l/min - 0.26/11.9 GPM	Min/max flow-rate
Pressione di lavoro max.	210 bar - 3045 PSI	Max working pressure
Temperatura ambiente	-30°C + 50°C	Room temperature
Temperatura olio	-30°C + 80°C	Oil temperature
Filtraggio consigliato	50 micron	Recommended filtration
Peso	0.426 Kg. 3/8" GAS	Weight
Peso	0.526 Kg. 1/2" GAS	Weight

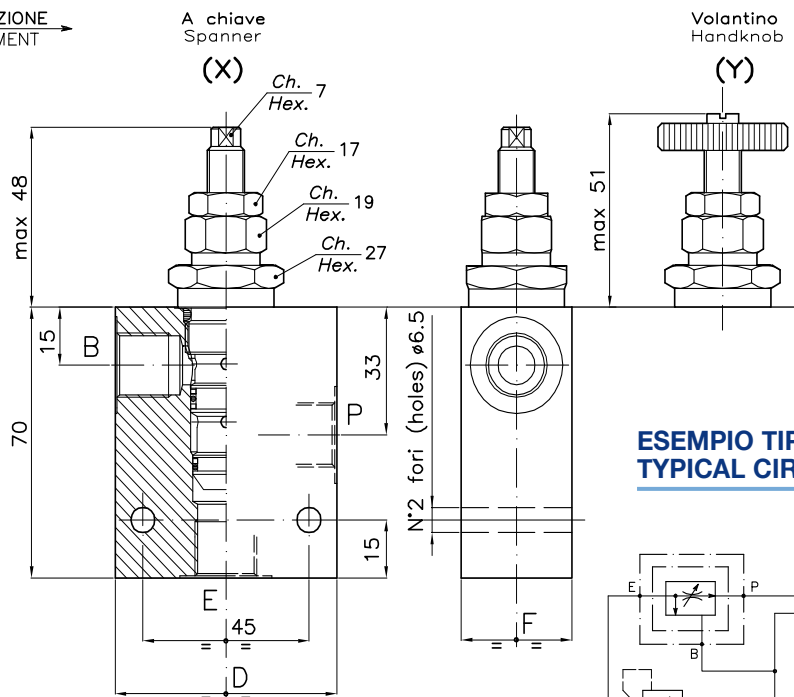


----- 3/8"
————— 1/2"

Viscosità olio 46 cSt a 50°C
Oil viscosity 46 cSt at 50°C

**CARTRIDGE STYLE FLOW CONTROL
VALVE WITH IN LINE BODY**

REGOLAZIONE
ADJUSTMENT



**ESEMPIO TIPICO DI CIRCUITO
TYPICAL CIRCUIT EXAMPLE**

**DIMENSIONI
DIMENSIONS**

NUMERO VALVOLA VALVE NUMBER	D	F	Attacchi Port size E-P-B GAS (BSPP)	Portata max Max flow-rate l/min - GPM
016	60	30	3/8"	30-7.9
017	70	35	1/2"	45-11.9

**CODICE DI ORDINAZIONE
HOW TO ORDER**

004 016 0 X 0

Numero valvola / Valve number

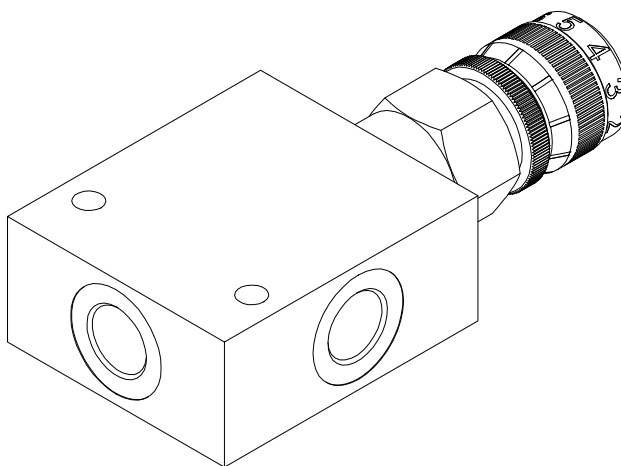
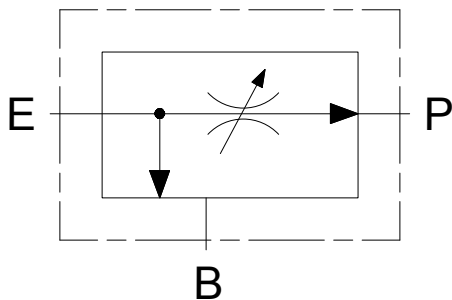
016

017

Regolazione
Adjustment

X | A chiave - Spanner

Y | Volantino - handknob



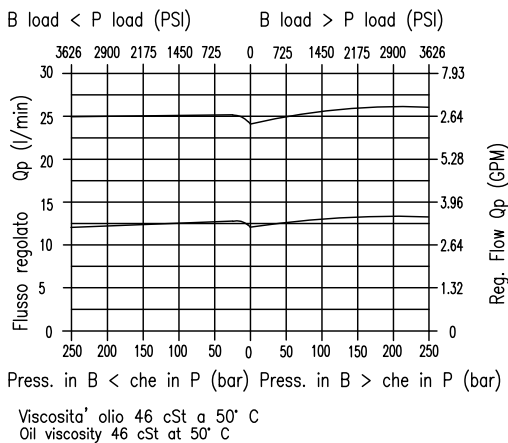
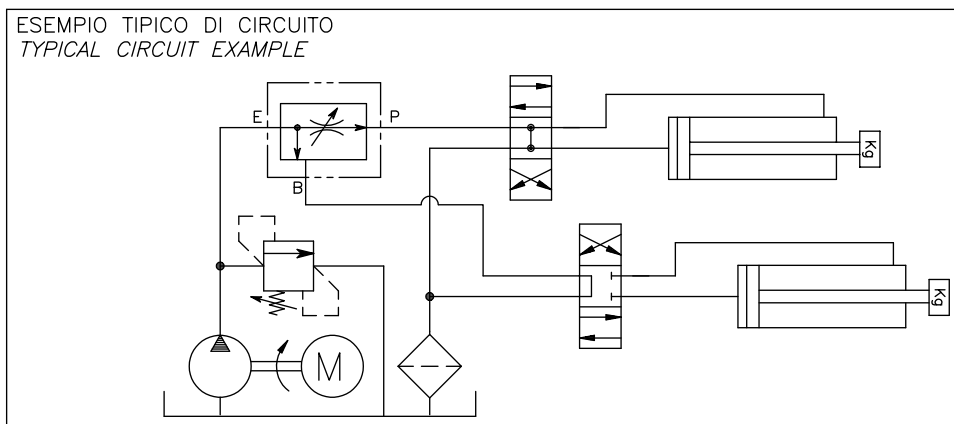
CARATTERISTICHE

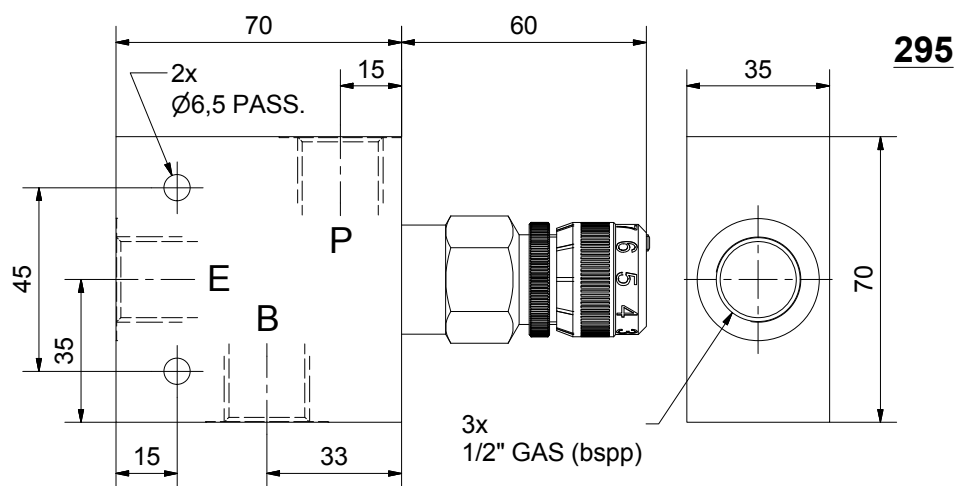
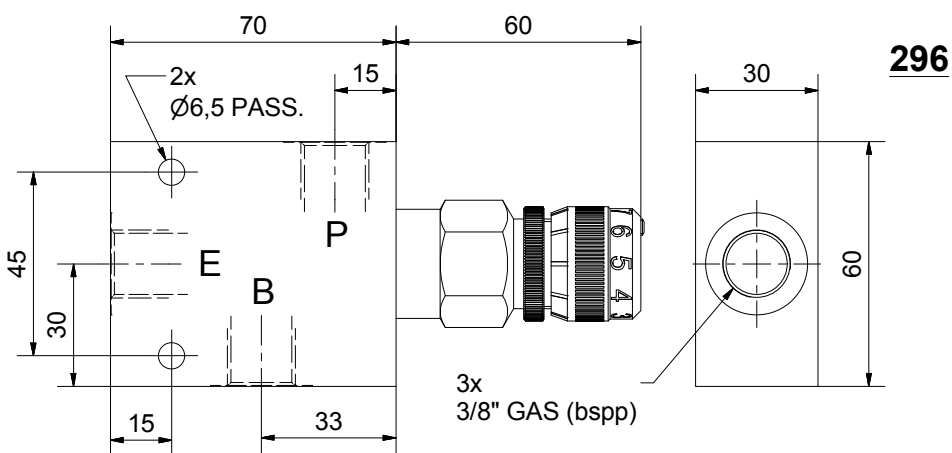
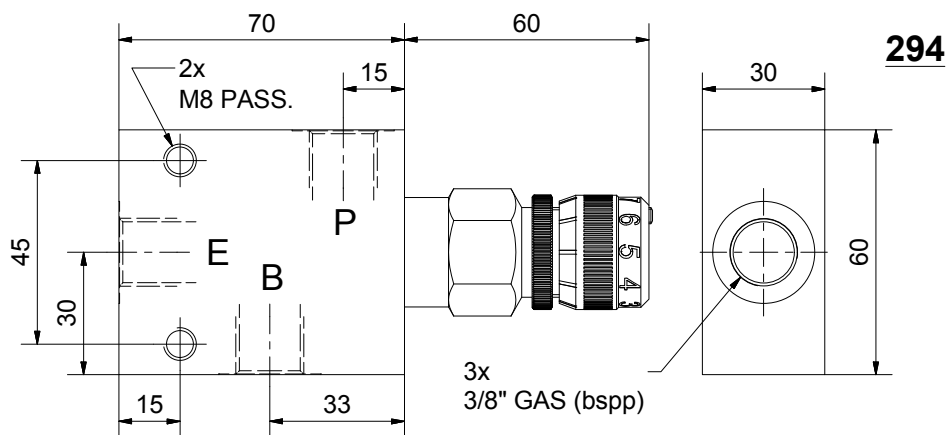
Portata min/max in ingresso
 Portata min/max regolata
 Pressione di lavoro Max.
 Temperatura ambiente
 Temperatura olio
 Filtraggio consigliato
 Collettori in alluminio

0.5/60 L/min - 0.1/16 GPM
0.5/30 L/min - 0.1/8 GPM
315 bar 4568 PSI
-30 + 50°C
-30 + 80°C
25 micron

PERFORMANCE

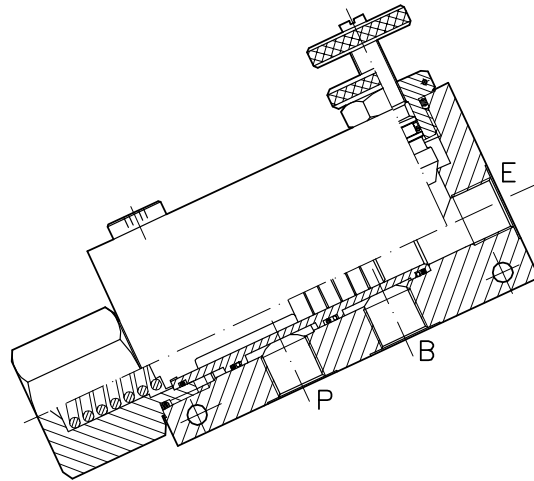
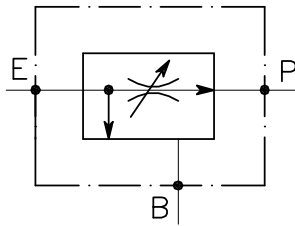
Min/max inlet flow-rate
 Min/max regulated flow-rate
 Max working pressure
 Room temperature
 Oil temperature
 Recommended filtration
 Aluminium body





**CODICE DI ORDINAZIONE
HOW TO ORDER**

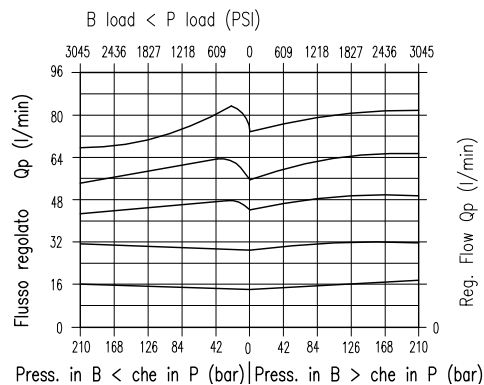
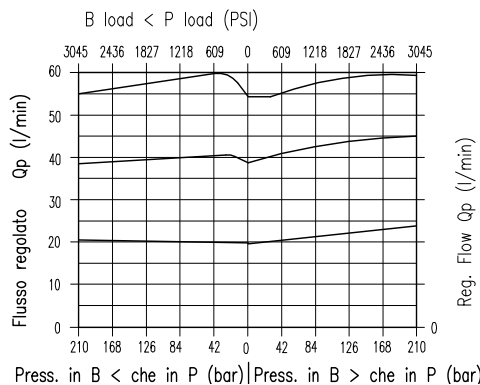
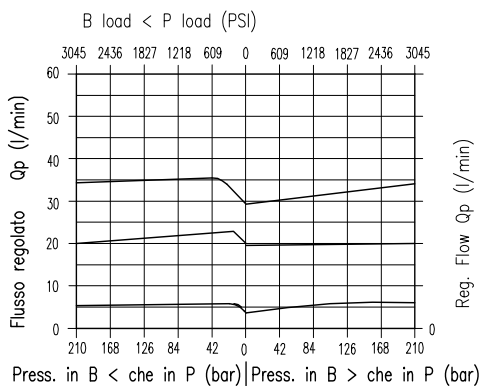
004	.	294	.	0	H	0
004	.	296	.	0	H	0
004	.	295	.	0	H	0



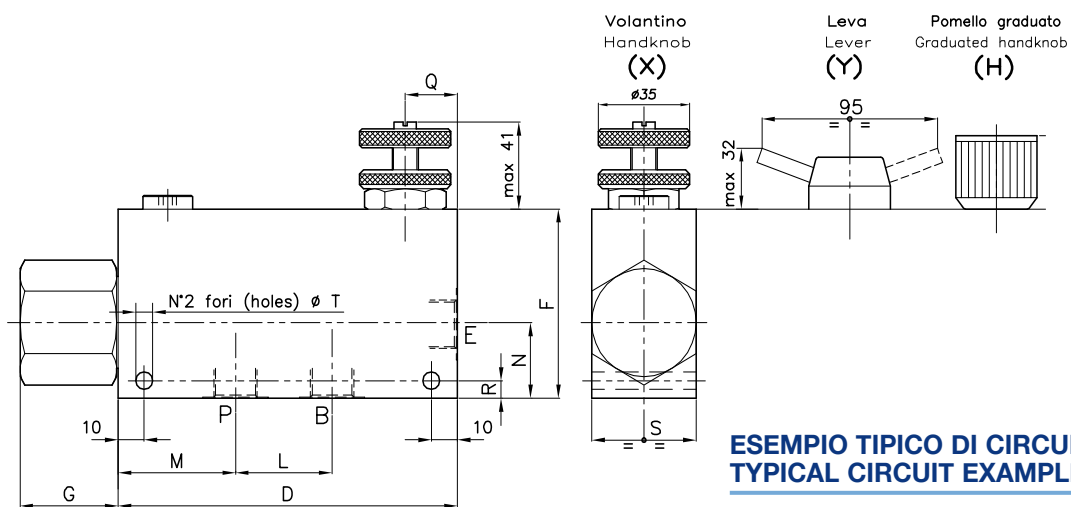
CARATTERISTICHE

PERFORMANCE

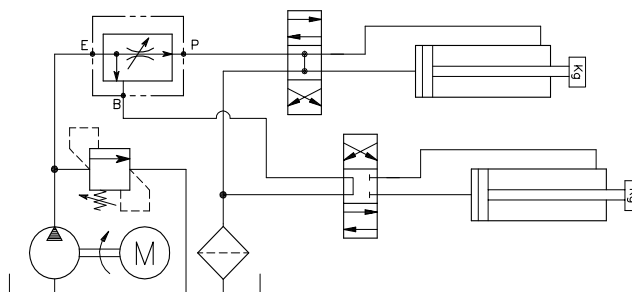
Luce nominale min/max	DN 6/11	Min/max rated size
Portata min/max	1/150 l/min - 0.26/39.6 GPM	Min/max flow-rate
Pressione di lavoro max.	210 bar - 3045 PSI	Max working pressure
Temperatura ambiente	-30°C + 50°C	Room temperature
Temperatura olio	-30°C + 80°C	Oil temperature
Filtraggio consigliato	50 micron	Recommended filtration
Peso	1.194 Kg. 3/8" GAS	Weight
Peso	1.171 Kg. 1/2" GAS	Weight
Peso	2.144 Kg. 3/4" GAS	Weight



Viscosità olio 46 cSt a 50°C / Oil viscosity 46 cSt at 50°C



**ESEMPIO TIPICO DI CIRCUITO
TYPICAL CIRCUIT EXAMPLE**



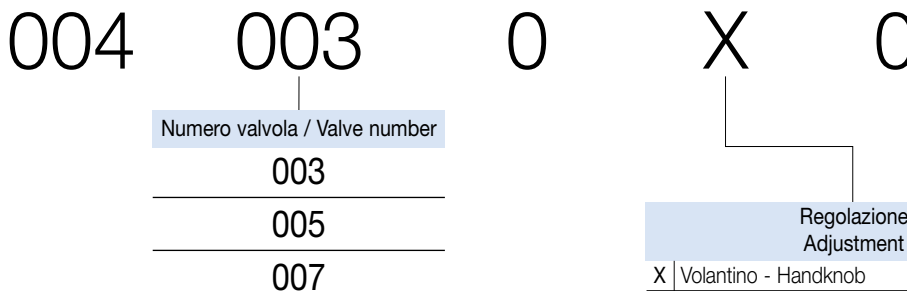
**DIMENSIONI
DIMENSIONS**

NUMERO VALVOLA VALVE NUMBER	D	F	G	L	M	N	Q	R	S	T	Attacchi Port size E-P-B GAS (BSPP)	Luce nominale Rated size DN	QP l/min - GPM	QE l/min - GPM
003	130	70	38	37	45	28	20	6.5	40	6.5	3/8"	6	30-7.9	55-14.5
005	130	70	38	37	45	28	20	6.5	40	6.5	1/2"	8	55-14.5	90-23.8
007	155	90	35	44	54	35	25	7.5	50	8.5	3/4"	11	90-23.8	150-39.6

QE = Portata max in entrata "E" - l/min
QE = Max admitted inlet flow "E" - l/min

QP = Portata max in uscita prioritario "P" - l/min
QP = Max delivery in priority "P" - l/min

**CODICE DI ORDINAZIONE
HOW TO ORDER**



- X Volantino - Handknob
- Y Leva - Lever
- H Pomello graduato - Graduated handknob
- Z Volantino in alluminio - Aluminium handknob