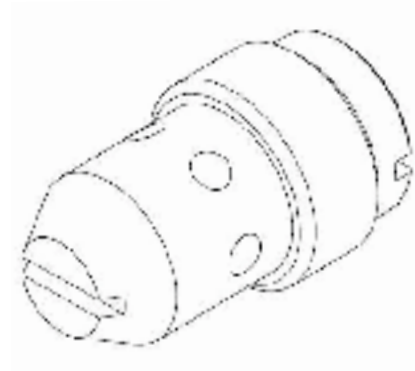


Sono valvole regolatrici di flusso ad inserto filettato a 2 vie compensate alla pressione e a regolazione fissa. Sono disponibili in tre grandezze costruttive tutte molto compatte, di piccole dimensioni e di facile montaggio. La portata viene pre-selezionata tramite il foro calibrato presente sul pistoncino compensatore e mantenuta costante (da B verso A) indipendente dalla pressione e dalla viscosità dell'olio. Nella direzione opposta il flusso (non compensato) attraversa la valvola strozzato creando una caduta di pressione dovuta e corrispondente al foro calibrato scelto.



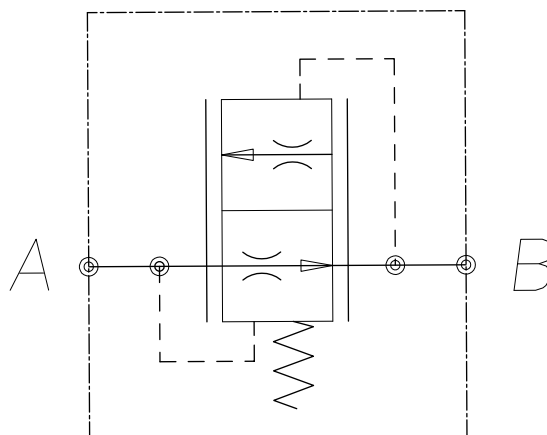
*They are flow control valves, two ways, pressure compensated and with fixed orifice. Flow setting is preadjusted through the calibrated orifice drilled on the compensator piston and is kept constant from 'B' to 'A' regardless of the  $\Delta p$  between port 'B' to 'A'. On the opposite direction the flow is restricted (not pressure compensated) according to the orifice size.*

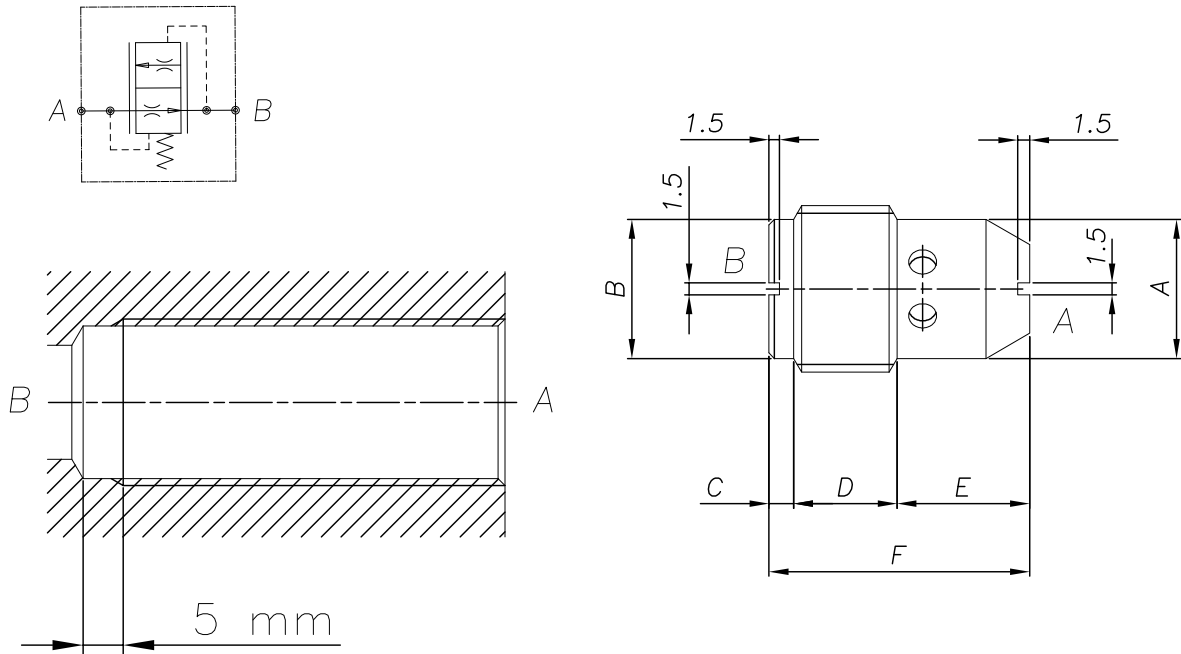
## CARATTERISTICHE

Grandezza	<b>1/4" - 3/8" - 1/2"</b>
Portata min/max	<b>Vedi tabella - See table</b>
Pressione max. di picco	<b>250 bar</b>
Pressione di lavoro max.	<b>210 bar</b>
Temperatura ambiente	<b>-30°C + 50°C</b>
Temperatura olio	<b>-30°C + 80°C</b>
Filtraggio consigliato	<b>30</b>
Peso	<b>Vedi tabella - See table</b>

## PERFORMANCE

Rated size
Min/max flow-rate
Max peak pressure
Max working pressure
Room temperature
Oil temperature
Recommended filtration
Weight





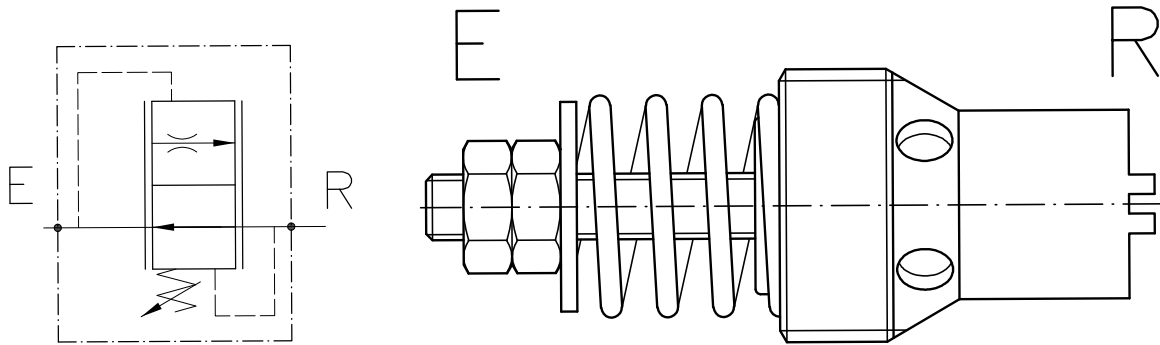
Attacchi Ports	Portata Max Max Flow	A	B	C	D	E	F	Peso Weight (KG)
1/4" GAS	15 (L/min)	10	11	3	9	13.5	25.5	0.013
3/8" GAS	28 (L/min)	14	14.5	2	11	15	28	0.027
1/2" GAS	45 (L/min)	17.5	17.5	2	13.5	19.5	35	0.054

INSERTO FILETTATO INSERT THREAD	SIGLA VALVOLE VALVE CODE	NUMERO VALVOLA VALVE NUMBER
1/4" GAS	VSC-14-*	256
3/8" GAS	VSC-38-*	257
1/2" GAS	VSC-12-*	258

**CODICE DI ORDINAZIONE  
HOW TO ORDER**

004 258 A 0 0

FILETTATURA VALVE SIZE	PORTATA CONTROLLATA L/min FLOW SET RANGE L/min																		
	A	B	C	D	E	F	H	J	K	L	M	N	P	R	S	T	X	J	Z
1/4" GAS	0.6	0.8	1	1.2	1.4	1.6	1.8	2	3	4	5	6	7	8	9	10	11	12	15
3/8" GAS	3	4	5	6	7	8	9	10	11	14	16	18	20	23	28				
1/2" GAS	12	16	20	25	30	35	40	43											

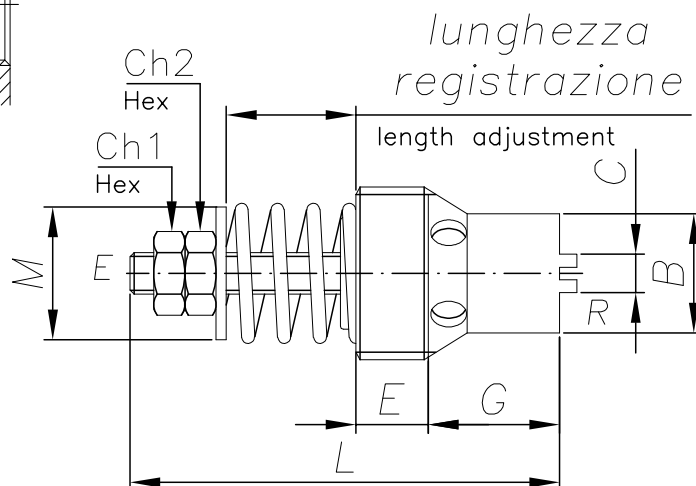
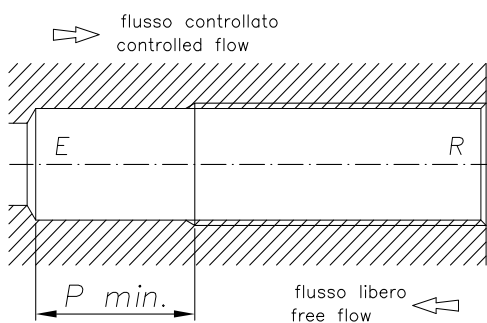


**CARATTERISTICHE**

Grandezza	1/4" - 3/8" - 1/2" - 3/4" - 1" - 1 1/4" - 1 1/2"
Portata min/max	Vedi tabella - See table
Pressione max. di picco	1/4" 3/8" 1/2" 3/4" - 300 bar - 1" 1 1/4" 250 bar
Temperatura ambiente	-30°C + 50°C
Temperatura olio	-30°C + 80°C
Filtraggio consigliato	30
Peso	0.013/0.270

**PERFORMANCE**

Rated size
Min/max flow-rate
Max peak pressure
Room temperature
Oil temperature
Recommended filtration
Weight



LOWERING CONTROL COMPENSATED VALVE "VB" SERIES

Sigla valvola Valve sign	Codice ordinazione Ordering code	B	C	E	G	L	M	CH1	CH2	Attacchi Ports GAS	Portata MAX MAX flow L/min - GPM	Peso Weight Kg
VB-14	<b>001.021.*00</b>	10	4	6.5	13.5	39	10	5.5	5.5	1/4"	15- 4	0.013
VB-38	<b>001.031.*00</b>	11.5	6	7	15	45	14	6	7	3/8"	35- 9.2	0.024
VB-12	<b>001.032.*00</b>	16	6	7	16.5	51	18	6	7	1/2"	65- 17.2	0.037
VB-34	<b>001.033.*00</b>	20	8	9.5	21.5	62	23	6	7	3/4"	150- 39.6	0.070
VB-100	<b>001.034.*00</b>	26	14	15	25	82	28.5	8	8	1"	250- 66	0.150
VB-114	<b>001.035.*00</b>	33	8	20.5	31,5	95	35	10	10	1 1/4"	300- 105.7	0.270

Grandezza Inserto Valve size	Portata controllata / Flow range L/min					
	A	B	C	D	E	F
1/4" GAS	1÷1.6	1.5÷2.5	2.4÷4	3.9÷6.3	6.2÷10	9,5÷15
3/8" GAS	2.5÷4	3.9÷6.3	6.1÷10	9.8÷16	15.8÷25	24.5÷35
1/2" GAS	16÷21	20.5÷25	27.5÷37	36.5÷50	48÷65	
3/4" GAS	37÷50	48÷65	63÷90	88÷120	115÷150	
1" GAS	80÷100	100÷130	128÷162	160÷200	195÷250	
1-1/4" GAS	160÷210	205÷250	245÷280	270÷340	330÷400	

001

035

F

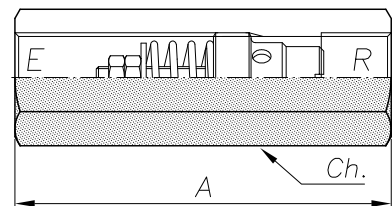
0

SOLO VALVOLA  
ONLY VALVE

0

SIGLA VALVOLA VALVE CODE	Codice Ordinazione Ordering Code	A	Ch	Attacchi Port size GAS (BSPP)	Peso Weight KG
VBC-14-FF	<b>001.016.*00</b>	66	19	1/4"	0.11
VBC-38-FF	<b>001.041.*00</b>	70	22	3/8"	0.12
VBC-12-FF	<b>001.042.*00</b>	80	27	1/2"	0.20
VBC-34-FF	<b>001.043.*00</b>	99	32	3/4"	0.29
VBC-100-FF	<b>001.044.*00</b>	135	41	1"	0.67
VBC-114-FF	<b>001.045.*00</b>	154	50	1 1/4"	1.04

VALVOLA CON CORPO  
VALVE WITH BODY



FEMMINA - FEMMINA  
FEMALE - FEMALE

SIGLA VALVOLA VALVE CODE	Codice Ordinazione Ordering Code	A	B	C	Ch	Attacchi Port size GAS (BSPP)	Peso Weight KG
VBC-14-MF	<b>001.017.*00</b>	78	66	12	19	1/4"	0.11
VBC-38-MF	<b>001.036.*00</b>	82	70	12	22	3/8"	0.14
VBC-12-MF	<b>001.037.*00</b>	100	85	15	27	1/2"	0.24
VBC-34-MF	<b>001.038.*00</b>	113	96	17	32	3/4"	0.34
VBC-100-MF	<b>001.039.*00</b>	135	110	25	41	1"	0.75
VBC-114-MF	<b>001.040.*00</b>	155	125	30	50	1 1/4"	1.09

MASCHIO - FEMMINA  
MALE - FEMALE

