

TECHNICAL INFORMATION

Art.no	EC1000
Capacity (kg)	1000
Weight (kg)	98
Total width (mm)	1000
Dimensions (LxWxH) (mm)	1360x1000x1595
Price	

EC-series | Crane for EUR pallet

Heavy-duty designed work shop crane. Made with Euro pallet dimensions, 840 mm between support legs. U-shaped support legs. There are 4 reach-out positions and lifting capacities. Turnable hook. Built-in overload protection valve. Overload testing before delivery. Distance between floor and lowest part of support leg, 60 mm.



EC1000

CY-series | Crane fork, 1500-3000 kg

This crane fork has a very handy and robust construction which can be operated easily without slings or chains. CY-series, with its self-balancing head, let the crane operator stay in the cabin, no need to step out from lorry/crane to make adjustments. To achieve best balance performance goods should weigh 20% of total crane capacity. Fork width is adjustable and so is the crane tower in height.



CY30



EX-series | Fork extensions

The simple but effective way of lengthening your forks to be able to handle longer loads safely. Heavy duty steel construction, fits on forks which are up to 50 mm in thickness.

TECHNICAL INFORMATION

Art.no	CY15	CY30	EX1800/100	EX1800/125	EX2200/100	EX2200/125	EX2400/125	EX2400/150
Work load limit (kg)	1500	3000	1000	2500	1000	2500	2500	5000
Adjustable fork width (mm)	350-900	450-900	-	-	-	-	-	-
Hook height (mm)	1655-2355	1720-2420	-	-	-	-	-	-
Effective height (mm)	1300-2000	1300-2000	-	-	-	-	-	-
Fork length (mm)	1000	1000	1800	1800	2200	2200	2400	2400
Fork cross (WxH) (mm)	100x40	120x50	-	-	-	-	-	-
Fits to fork width (mm)	-	-	100 x 45	125 x 45	100 x 45	125 x 45	125 x 45	150 x 50
Dimensions (LxWxH) (mm)	1127x932x1650-2350	1140x920x1720-2420	-	-	-	-	-	-
Weight (kg)	165	280	71	71	87	87	94	94
Price								



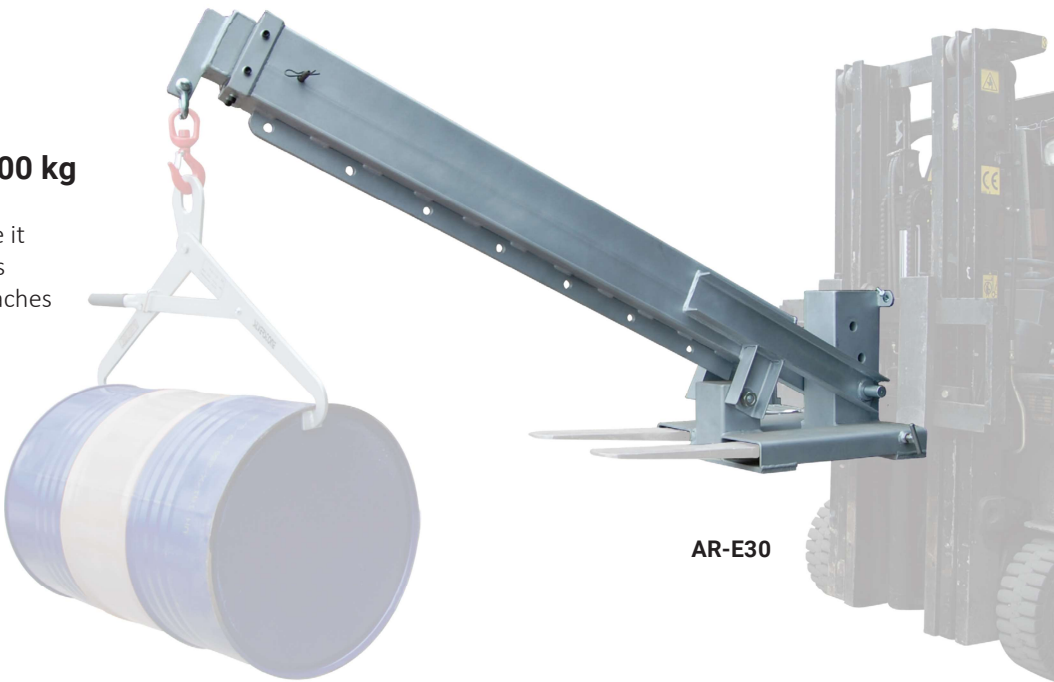
MK25

MK25 | Fork hook, 2500 kg

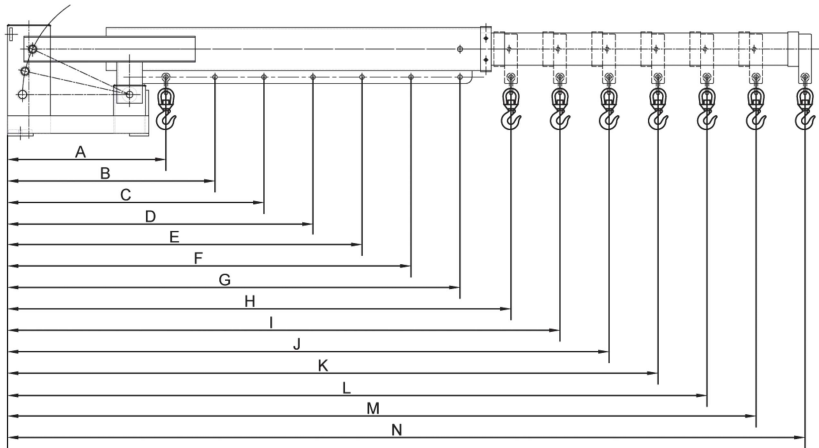
Converts a forklift into a mobile crane in seconds. This fork hook is adjustable along the length of the forks and secures the forks with thumb screws. Swivel hook includes a safety hatch. Weight is 25 kg and suits max. fork dimension 160x60 mm.

AR-E30 | Telescopic fork, 596-3000 kg

Useful fork truck crane for heavy loads where it normally is hard to access/reach. The crane is adjustable in height up to 40 degrees and reaches 3726 mm at most.



AR-E30



TECHNICAL INFORMATION														
Art.no	AR-E30													
Positions	A	B	C	D	E	F	G	H	I	J	K	L	M	N
Length (mm)	740	969	1198	1427	1656	1885	2114	2352	2581	2810	3039	3268	3497	3726
Capacity (kg)	3000	2291	1853	1556	1341	1178	1050	944	860	790	730	679	635	596
Price														