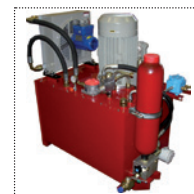
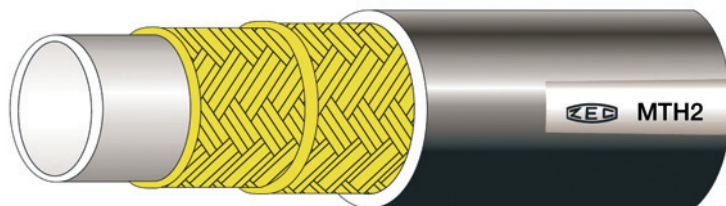
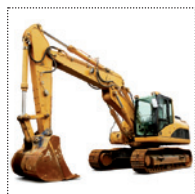


TUBI TERMOPLASTICI SERIE MTH2

Da 165 bar a 400 bar

THERMOPLASTIC HOSES MTH2 SERIES

From 165 bar to 400 bar - From 2400 psi to 5800 psi



Caratteristiche tecniche dei tubi serie MTH2 con doppia treccia in acciaio
Technical features of the MTH2 series hoses with double steel braid

Riferimento	Ø				Pressione a 23°C Pressure at 23°C		Pressione Pressure		Raggio Radius		Peso g/m	Peso lbs/ft	Codice Boccola
	interno inch.	interno mm.	external inch.	esterno mm.	Scoppio min. bar	Scoppio min. psi	Esercizio max. bar	Esercizio max. psi	Curvatura min. mm.	Curvatura min. inch.			
Reference	internal inch.	internal mm.	external inch.	external mm.	min. Burst bar	min. Burst psi	Working max. bar	Working max. psi	min. Bend mm.	min. Bend inch.	Weight g/m	Weight lbs/ft	Ferrule Code
MTH230000	1/4"	6.4	0.531	13.5	1600	23200	400	5800	40	1.57	294	0.198	BP516R7V
MTH240000	5/16"	8.0	0.594	15.1	1400	20300	350	5075	50	1.97	346	0.233	BP38R7V
MTH250000	3/8"	9.7	0.669	17.0	1320	19140	330	4785	60	2.36	418	0.281	BP38R2
MTH260000	1/2"	13.0	0.866	22.0	1100	15950	275	3988	75	2.95	598	0.402	BP12R2T
MTH270000	5/8"	16.3	0.965	24.5	1000	14500	250	3625	110	4.33	660	0.444	BP34R7
MTH280000	3/4"	19.2	1.083	27.5	860	12470	215	3118	150	5.91	788	0.530	BP34R1T
MTH290000	1"	25.6	1.378	35.0	660	9600	165	2400	185	7.28	1053	0.708	BP1R1T

Caratteristiche tecnico-costruttive:

Anima interna in poliestere termoplastico, rinforzo con doppia treccia acciaio ad alta resistenza e rivestimento esterno in poliuretano antiabrasione stabilizzato ai raggi UV e resistente ai microrganismi, a richiesta microperforato per passaggio aria e gas compatibili.

Applicazioni:

Le tubazioni della serie MTH2 sono state create per uso oleodinamico ad alta pressione.

Temperature di utilizzo:

Da -40°C a +100°C Da -40°F a +212°F
 Per aria, acqua e fluidi a base acquosa la temperatura massima di esercizio è +70°C. (+158°F)

Pressioni d'esercizio:

Rapporto di sicurezza 1:4

Valore max. di vuoto:

-0,93 bar; 700 mm Hg

Specifiche:

Tubazioni conformi o superiori alle pressioni della norma SAE 100R2.

Technical-constructive features:

Internal core in thermoplastic polyester, reinforcement in double high tensile steel braid, exterior covering in antiabrasion polyurethane stabilized to UV rays and resistant to microorganisms; on request it is also available in micro perforated version for air and compatible gas.

Applications:

The MTH2 series hoses have been created for hydraulic use at high pressure.

Utilization temperature:

From -40°C to +100°C From -40°F to +212°F
 Max. working temperature of air, water and fluids containing water: +70°C. (+158°F)

Working pressure:

Safety ratio 1:4

Vacuum Rating:

-13,5 psi; 27,5 inch Hg

Specifications:

These hoses are meet or exceed standards SAE 100R2 pressures.