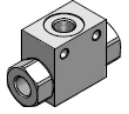
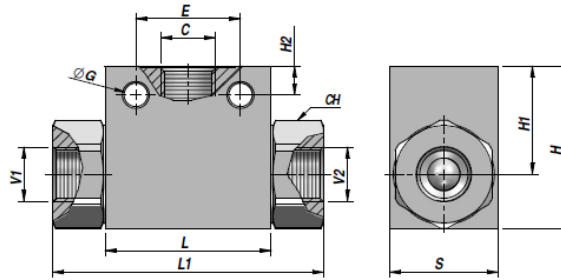
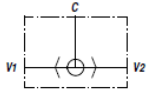


## VU2P shuttle valves



Codice Code Bestell-Nr.	C BSP	V1 - V2 BSP	Q MAX l/min	P MAX bar	Tipo Type Typ	L	L1	ØG	E	H2	CH	H1	H	S	kg
VSG390.100000	1/4"	1/4"	35	500	VU/SF 010	36	69	5,5	25	7,5	22	22,5	35	25	0,27
VSG390.200000	3/8"	3/8"	50	500	VU/SF 020	45	75	6,5	29	8	27	30	45	30	0,46
VSG390.300000	1/2"	1/2"	90	500	VU/SF 030	57	94	5,5	36	9	30	32	50	35	0,74
VSG390.400000	3/4"	3/4"	140	350	VU/SF 040	65	100	6,5	50	6,5	41	37,5	60	50	1,41
VSG390.500000	1"	1"	180	300	VU/SF 050	80	126	10,5	60	11	46	54,5	80	50	1,87

MONTAGGIO IN LINEA  
LINE MOUNTING  
REIHENMONTAGE

MATERIALE - MATERIAL: ACCIAIO - STEEL - STAHL

DP062901, DP062902, DP026275, DP062899, DP062900