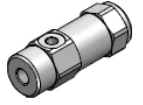
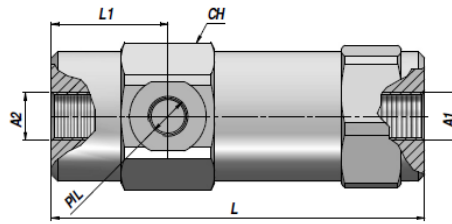
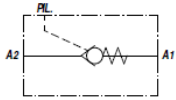


## VBPSL pilot operated check valves



Codice Code Bestell-Nr.	A1 - A2 BSP	PIL BSP	Q MAX l/min	P MAX bar	PILOT RATIO	Tipo Type Typ	L	L1	CH	kg
VSG341.109500	1/4"	1/4"	25	350	1:9,5	VBPS 010	103	32,5	36	0,69
VSG341.206000	3/8"	1/4"	40	350	1:6	VBPS 020	111	35	40	0,93
VSG341.304300	1/2"	1/4"	60	350	1:4,3	VBPS 030	122	38	42	1,08
VSG341.404000	3/4"	1/4"	90	300	1:4,4	VBPS 040	145,5	44,5	55	2,32
VSG341.503500	1"	1/4"	130	260	1:3,5	VBPS 050	164	44,5	55	2,36

Pressione di apertura - Opening pressure - Öffnungsdruck: bar 0,5 (Standard) - 4 - 8

MONTAGGIO IN LINEA  
LINE MOUNTING  
REIHENMONTAGE

MATERIALE - MATERIAL: ACCIAIO - STEEL - STAHL

DP034436, DP056842, DP036775, DP036312, DP062898