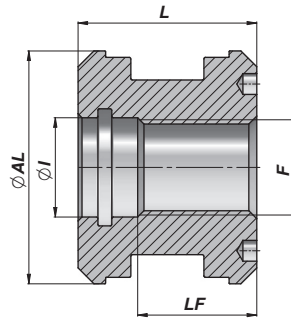
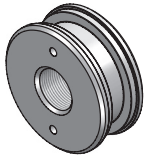
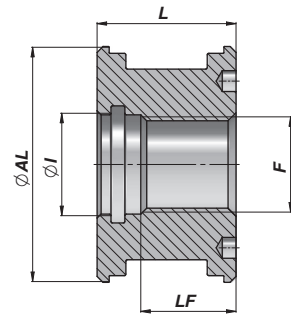
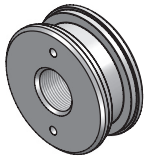


CTF**PISTONE FILETTATO**
THREADED PISTON
KOLBEN MIT GEWINDE**M250**

Codice Code Bestell-Nr.	ØAL	F	LF	L	ØI	kg	Confezione Box Verpackung	Pz Pcs Stk	Set guarnizioni Seal kits Dichtsätze
*CTF2510125	25	M10x1,5	17,5	25	11	0,01	Z00CTF2510125	100	GKGF025010
CTF0401615	40	M16x1,5	30	40	17	0,22	Z50CTF0401615	50	GKGF040016
CTF0502015	50	M20x1,5	28	40	21	0,31	Z50CTF0502015	50	GKGF050020
CTF0602420	60	M24x2	30	45	25	0,58	Z25CTF0602420	25	GKGF060024
CTF0632420	63	M24x2	30	45	25	0,66	Z25CTF0632420	25	GKGF063024
CTF0702420	70	M24x2	30	45	25	0,78	Z25CTF0702420	25	GKGF070024
CTF0802720	80	M27x2	30	45	28	1,08	Z20CTF0802720	20	GKGF080027
CTF0903320	90	M33x2	35	50	35	1,57	Z10CTF0903320	10	GKGF090033
CTF1003320	100	M33x2	35	50	35	2,18	Z10CTF1003320	10	GKGF100033
NEW! CTF1103930	110	M39x3	35	50	42	2,40			GKGF110039
NEW! CTF1204230	120	M42x3	35	50	45	3,00			GKGF120042
NEW! CTF1254230	125	M42x3	35	50	45	3,20			GKGF125042
NEW! CTF1404830	140	M48x3	40	58	51	4,90			GKGF140048
NEW! CTF1504830	150	M48x3	40	58	51	5,80			GKGF150048
NEW! CTF1605230	160	M52x3	40	58	54	6,70			GKGF160052

MATERIALE - MATERIAL:
ACCIAIO - STEEL - STAHL 9SMn28
* ALLUMINIO - ALUMINIUM UNI2011-11S

GUARNIZIONI: VEDI PAGINA 94
SEALS: SEE PAGE 94 - DICHTUNGEN: SIEHE SEITE 94

CTBF**PISTONE FILETTATO**
THREADED PISTON
KOLBEN MIT GEWINDE**M250**

Codice Code Bestell-Nr.	ØAL	F	LF	L	ØI	kg	Confezione Box Verpackung	Pz Pcs Stk	Set guarnizioni Seal kits Dichtsätze
CTBF040M16	40	M16x1,5	19	27	17	0,17	Z00CTBF040M16	100	GKGB040016
CTBF050M20	50	M20x1,5	21	30	21	0,29	Z50CTBF050M20	50	GKGB050020
CTBF060M24	60	M24x2	24	35	25	0,45	Z25CTBF060M24	25	GKGB060024
NEW! CTBF063M24	63	M24x2	23	35	25	0,50	Z25CTBF063M24	25	GKGB063024
CTBF070M24	70	M24x2	24	35	25	0,70	Z25CTBF070M24	25	GKGB070024
CTBF080M27	80	M27x2	26	40	28	1,06	Z20CTBF080M27	20	GKGB080027
CTBF100M33	100	M33x2	26	40	35	1,76	Z10CTBF100M33	10	GKGB100033

MATERIALE - MATERIAL:
ALLUMINIO - ALUMINIUM UNI 2011-11S

GUARNIZIONI: VEDI PAGINA 94
SEALS: SEE PAGE 94 - DICHTUNGEN: SIEHE SEITE 94