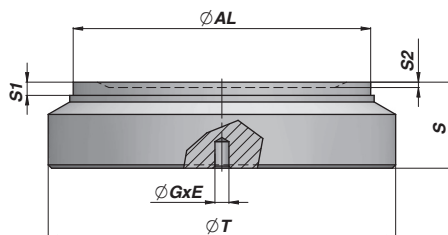
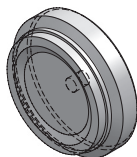


**CFPM**

**FONDELLO**  
END-PLUG  
ZYLINDERBODEN

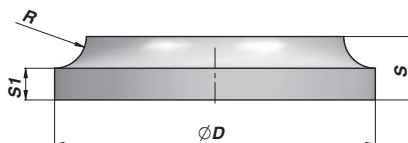
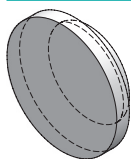


Codice Code Bestell-Nr.	ØAL	ØT	S	S1	S2	ØG x E	kg	Confezione Box Verpackung	Pz Pcs Stk
CFPM060050017	50	60	17	4	2	ø 4,25 x 8	0,30	Z50CFPM060050	50
NEW! CFPM065050017	50	65	17	4	-	ø 4,25 x 8	0,36	Z50CFPM065050	50
CFPM070060019	60	70	19	4	2	ø 4,25 x 8	0,50	Z50CFPM070060	50
NEW! CFPM075060019	60	75	19	4	-	ø 4,25 x 8	0,56	Z25CFPM075060	25
CFPM080070022	70	80	22	4	2	ø 4,25 x 8	0,80	Z20CFPM080070	20
CFPM085070022	70	85	22	4	2	ø 4,25 x 8	0,85	Z20CFPM085070	20
CFPM090075022	75	90	22	4	-	ø 4,25 x 8	1,00	Z20CFPM090075	20
CFPM095080025	80	95	25	4	2	ø 4,25 x 8	1,20	Z20CFPM095080	20
CFPM100085025	85	100	25	4	-	ø 4,25 x 8	1,40	Z10CFPM100085	10
CFPM105090026	90	105	26	4	-	ø 4,25 x 8	1,60	Z10CFPM105090	10
CFPM110090026	90	110	26	4	-	ø 4,25 x 8	1,70	Z10CFPM110090	10
CFPM115100030	100	115	30	4	2	ø 6,25 x12	2,20	Z10CFPM115100	10
CFPM120100030	100	120	30	4	2	ø 6,25 x12	2,30		
CFPM125110031	110	125	31	7	-	ø 6,25 x12	2,80		
CFPM130110031	110	130	31	7	-	ø 6,25 x12	3,00		
CFPM140120034	120	140	34	7	-	ø 6,25 x12	3,70		
NEW! CFPM145120034	120	145	34	7	-	ø 6,25 x12	3,90		
CFPM145125035	125	145	35	7	-	ø 6,25 x12	4,20		
NEW! CFPM150125035	125	150	35	7	-	ø 6,25 x12	4,31		
CFPM160140040	140	160	40	7	-	ø 6,25 x12	5,90		
CFPM170140040	140	170	40	7	-	ø 6,25 x12	6,40		
CFPM170150042	150	170	42	7	-	ø 6,25 x12	7,00		
NEW! CFPM180150042	150	180	42	7	-	ø 6,25 x12	7,50		
CFPM180160045	160	180	45	7	-	ø 6,25 x12	8,50		
CFPM190160045	160	190	45	10	-	ø 6,25 x12	8,50		

MATERIALE - MATERIAL:  
ACCIAIO - STEEL - STAHL S355J0 (Fe510C) - S355JR (A105)

**CFI**

**FONDELLO INTERNO**  
INTERNAL END-PLUG  
INNENBODEN



Codice Code Bestell-Nr.	ØAL	ØD	S	S1	R	kg	Confezione Box Verpackung	Pz Pcs Stk
CFI0410012	40	41	12	5	7	0,09	Z00CFI0410012	100
CFI0510012	50	51	12	5	7	0,15	Z00CFI0510012	100
CFI0610015	60	61	15	7	8	0,27	Z50CFI0610015	50
NEW! CFI0640015	63	64	15	7	8	0,30	Z50CFI0640015	50
CFI0710015	70	71	15	7,5	7,5	0,39	Z50CFI0710015	50
CFI0810017	80	81	17	9	8	0,60	Z25CFI0810017	25
NEW! CFI0910017	90	91	17	9	8	0,80	Z25CFI0910017	25
CFI1010020	100	101	20	10	10	1,10	Z20CFI1010020	20

Ø AL = TUBO: ALESAGGIO - TUBE: BORE - ZYLINDERROHR: INNEN Ø

MATERIALE - MATERIAL:  
ACCIAIO - STEEL - STAHL S355J0 (Fe510C) - S355JR (A105)

PER CILINDRI CON FLANGIA  
FOR CYLINDER WITH FRONT FLANGE  
FÜR ZYLINDER MIT VORDERFLANSCH