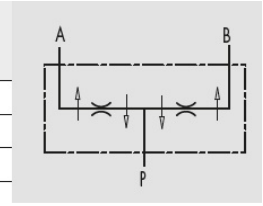
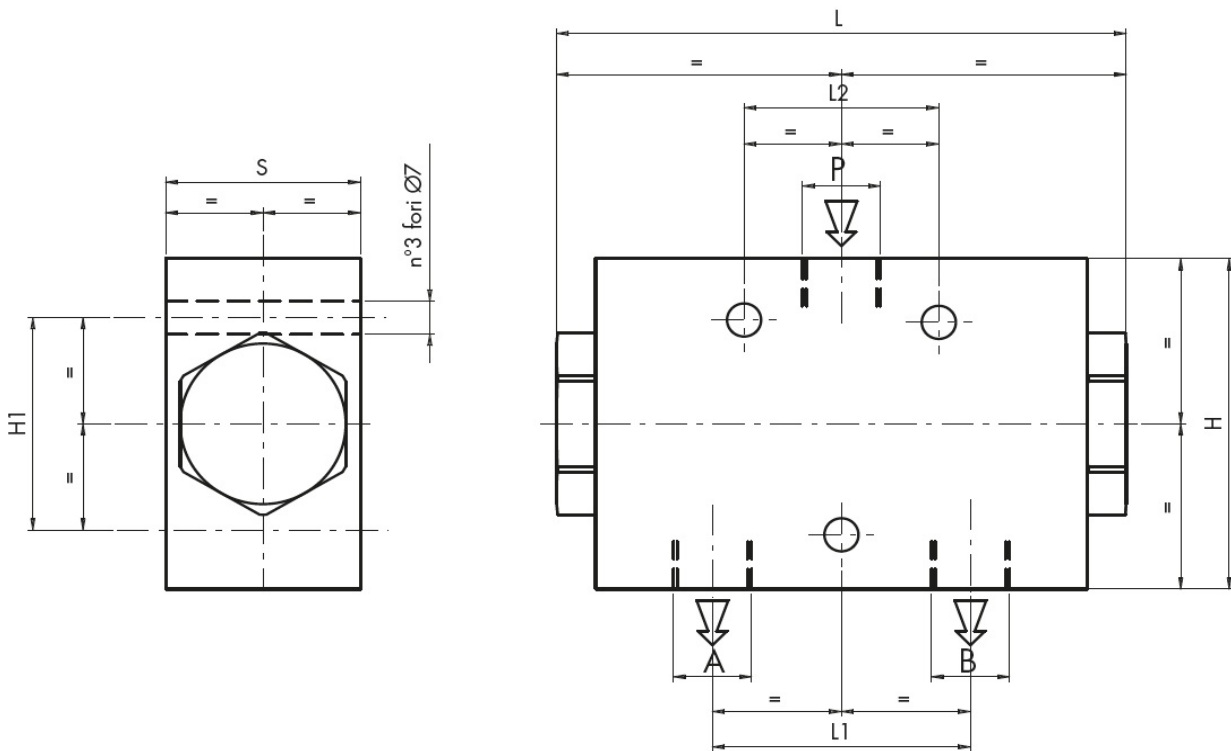


DFL 2-WAYS FLOW DIVERTER

CODICE CODE	SIGLA TYPE	PORTATA MIN.* MIN. FLOW Lt./min	PORTATA MAX.* MAX FLOW Lt./min	PRESS. ESERCIZIO WORKING PRESSURE Bar	PICCO DI PRESSIONE PEAK PRESSURE Bar
V1022	DFL 6-10	6	10	250	300
V1023	DFL 10-20	10	20	250	300
V1025	DFL 25-40	25	40	250	300
V1026	DFL 40-60	40	60	250	300



*Capacity values refers to input P



CODICE CODE	SIGLA TYPE	P	A - B	L	L1	L2	H	H1	S	PESO WEIGHT
		GAS	GAS	mm	mm	mm	mm	mm	mm	Kg
V1022	DFL 6-10	G 3/8"	G 3/8"	117	53	40	70	45	40	2,000
V1023	DFL 10-20	G 3/8"	G 3/8"	117	53	40	70	45	40	2,000
V1025	DFL 25-40	G 1/2"	G 3/8"	117	53	40	70	45	40	2,000
V1026	DFL 40-60	G 1/2"	G 3/8"	117	53	40	70	45	40	2,000

DP055166 DP055167 DP055168 DP069721