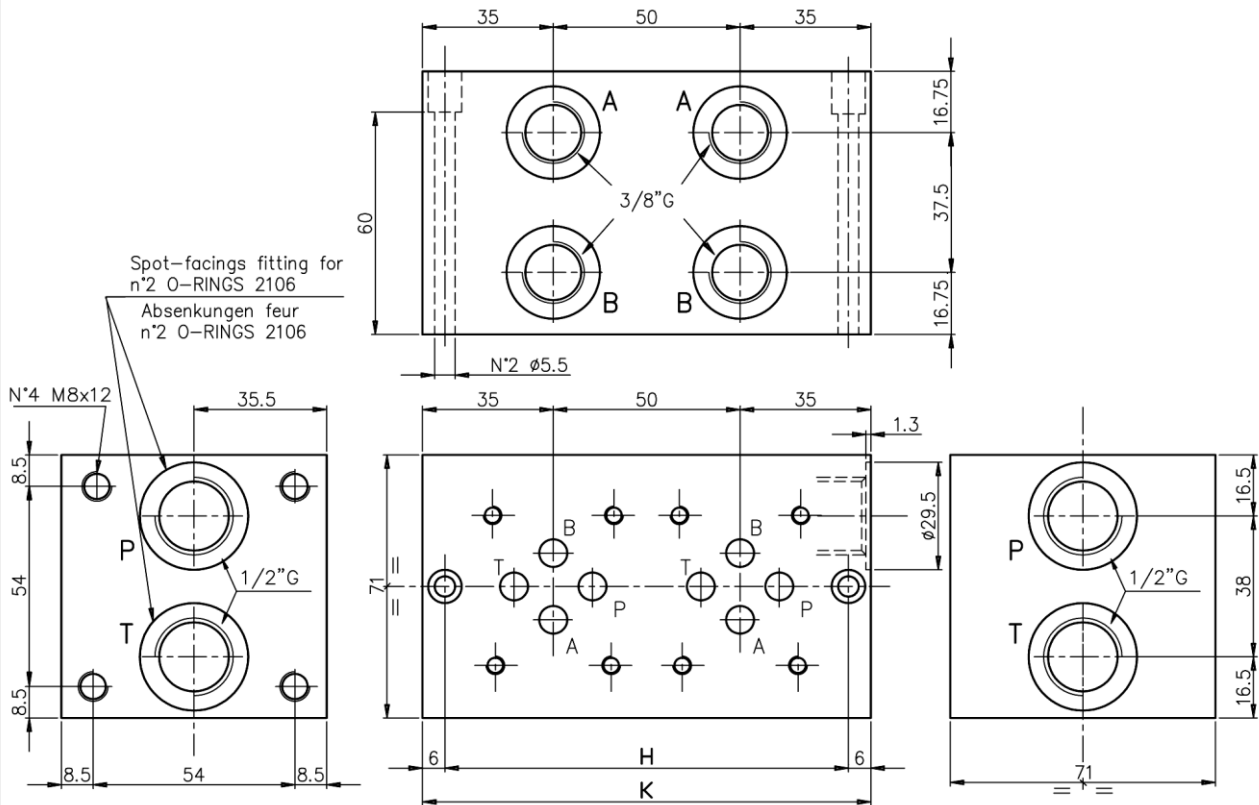
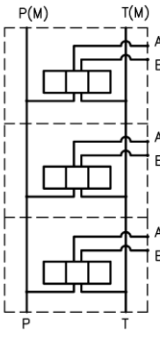


MONOBLOCK TYPE EM213...Y (prearrangement for modular system)

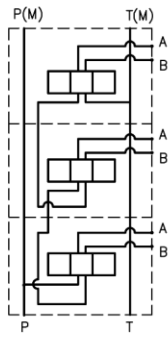
Monoblock with ports A-B = 3/8"G on the side, and P-T = 1/2"G.
Monoblock mit seitlichen Anschlüssen A-B = 3/8"G, und P-T = 1/2"G.



Symbol
parallel conn.
Parallel schalt.

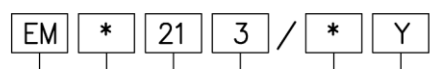


Symbol
Series conn.
Serien schalt.



N° Elem.	H	K	(Kg)
1	58	70	2
2 *	108	120	3.5
3 *	158	170	5
4 *	208	220	6.5
5	258	270	8
6	308	320	9.5
7	358	370	11
8	408	420	12.5
9	458	470	14
10	508	520	15.5
11	558	570	17
12	608	620	18.5

Ordering code
Bestell-Code



EUROFLUID
Monoblock = M

Y = without RV
ohne DBV

(if not indicated) = parallel
(wenn nicht angegeben)
for Series / fuer Serie = S

1, 2,..., 12 N. of elements (*)
Anzahl Elemente (*)

modular system = 21
Verkettungsausführung

CETOP 3

NOTE (*) : The series version is standard from 2 up to 4 elements
BEMERKUNG (*) : Serienversion ab 2 bis 4 fach standard