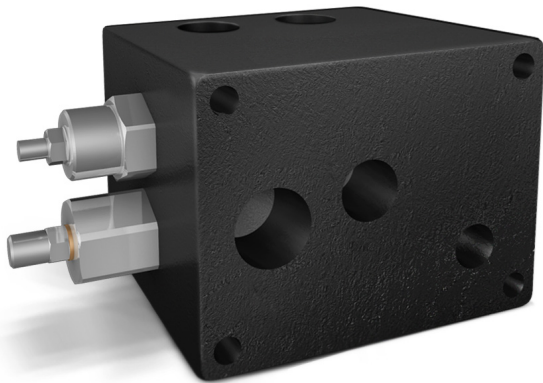
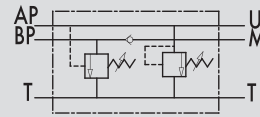


VALVOLE DI ESCLUSIONE ALTA-BASSA PRESSIONE FLANGIABILI PER PIASTRA NG6-NG10 E NG16

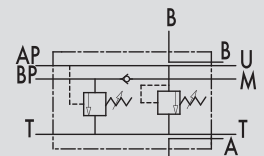
TIPO / TYPE
VABP FL



SCHEMA IDRAULICO
HYDRAULIC DIAGRAM



VABP FL 6 - VABP FL 10



VABP FL 16

TWO PUMP "HI-LOW" UNLOADING VALVES FLANGEABLE (BASE NG6- NG10 AND NG16)

IMPIEGO:

In un circuito alimentato da due pompe in parallelo, valvola utilizzata per mandare a scarico la pompa di maggior portata al raggiungimento di un determinato valore di taratura. Da questo momento in poi l'attuatore lavora con la pompa di minor portata a pressione maggiore, consumando meno energia. È stata studiata appositamente per la flangiatura diretta all'elettrovalvola.

MATERIALI E CARATTERISTICHE:

Corpo: acciaio brunito
Componenti interni: acciaio temprato termicamente e rettificato
Guarnizioni: BUNA N standard
Tenuta: a cono guidato. Trafilamento trascurabile

MONTAGGIO:

Fissare la valvola alla centralina collegando BP alla pompa di maggior portata, AP alla pompa di minor portata, T allo scarico e M all'eventuale manometro. Flangiare l'elettrovalvola alla VABP e collegare gli attacchi A e B all'attuatore.

PERDITE DI CARICO PRESSURE DROPS CURVE

USE AND OPERATION:

This valve is used in a 2 parallel-working pumps circuit in order to release the excess of the higher flow pump to the tank when this gets the required pressure setting. Since this moment and on the actuator works with the lower flow pumps at higher pressure, consuming less energy. It's ideal for direct flange-mounting on solenoid valves.

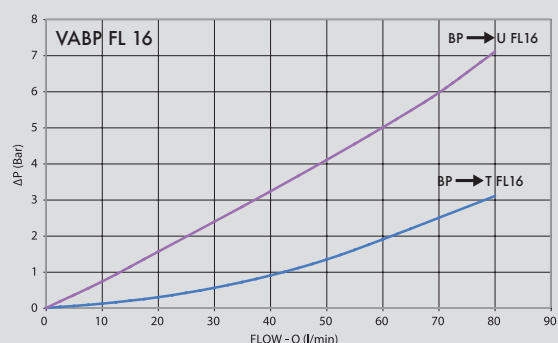
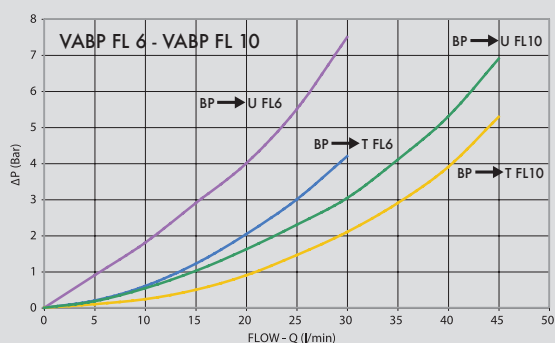
MATERIALS AND FEATURES:

Body: burnished steel
Internal components: grounded and hardened steel
Seals: BUNA N standard
Tightness: minor leakage

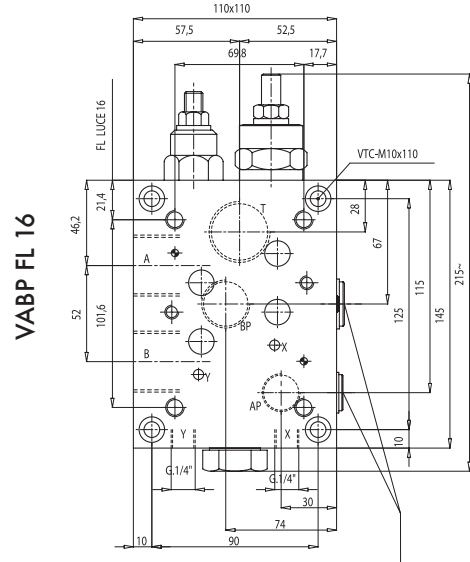
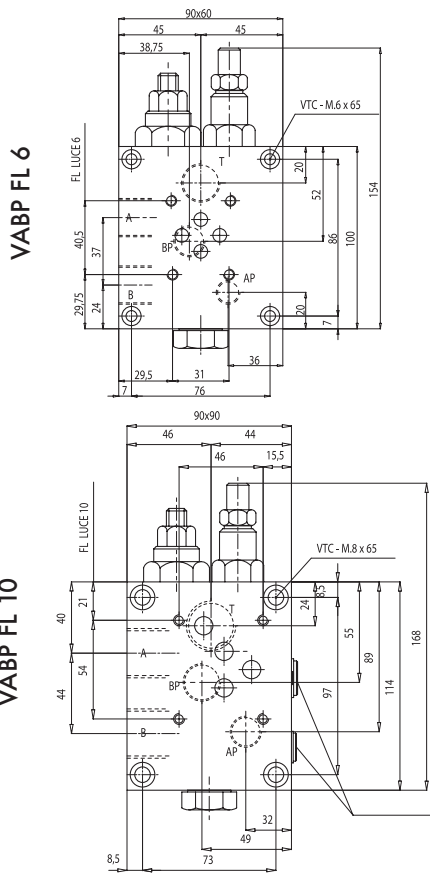
APPLICATIONS:

Fix the valve to the pressure flow by connecting BP to the higher flow pump, AP to the lower flow pump, T to the tank and M to the eventual manometer. Flange the solenoid valve to the VABP and connect ports A and B to the actuator.

Temperatura olio: 50°C - Viscosità olio: 30 cSt
Oil temperature: 50° C - Oil viscosity: 30 cSt



CODICE CODE	SIGLA TYPE	PORTATA MAX MAX FLOW Lt. / min			PRESSIONE MAX MAX PRESSURE Bar
		AP	BP	T	
V0518	VABP FL 6	20	40	60	350
V0515	VABP FL 10	30	50	80	350
V0516	VABP FL 16	40	100	120	350



Tappi reversibili per pompe fuori serbatoio
 Reversible caps

CODICE CODE	SIGLA TYPE	A	B	T	AP	BP	PESO WIGHT kg
		GAS	GAS	GAS	GAS	GAS	
V0518	VABP FL 6	G 1/2"	G 1/2"	G 1/2"	G 1/4"	G 3/8"	3,854
V0515	VABP FL 10	G 3/4"	G 3/4"	G 3/4"	G 3/8"	G 1/2"	6,338
V0516	VABP FL 16	G 1"	G 1"	G 1"	G 1/2"	G 3/4"	11,928

MOLLE - SPRINGS

VALVOLA VALVE	BP (BAR)	AP (BAR)
VABP FL 6	20-80	50-350
VABP FL 10	20-80	50-350
VABP FL 16	20-80	50-330