

BOXER 80/81



STANDARD: II 3/3 GD c IIB T135°C (zone 2)
CONDUCT: II 2/2 GD c IIB T135°C (zone 1)



DIAPHRAGM PUMPS

BOXER diaphragm pumps are characterized by exceptional performance, power and strength, making them ideal for pumping liquids with high apparent viscosity even if containing suspended solids. The **stall-prevention** pneumatic system assures a safe pump running and it does **not need lubricated air**.

Self-priming dry capacity even with considerable suction head, **fine tuning of speed** without pressure loss and the **possibility of dry operation without suffering damage** mean that these pumps offer unrivalled versatility. In addition, the huge choice of construction materials allows selection of optimum chemical compatibility with the fluid and/or environment without neglecting the temperature range. They are specifically designed for **demanding applications with high humidity or in potentially explosive atmospheres (ATEX certification)**.

Intake/delivery connections G 1" f o DN 25 (*) - flow rate 100 l/min

Construction materials: PP - PVDF - Alu - Aisi 316





PP



PVDF

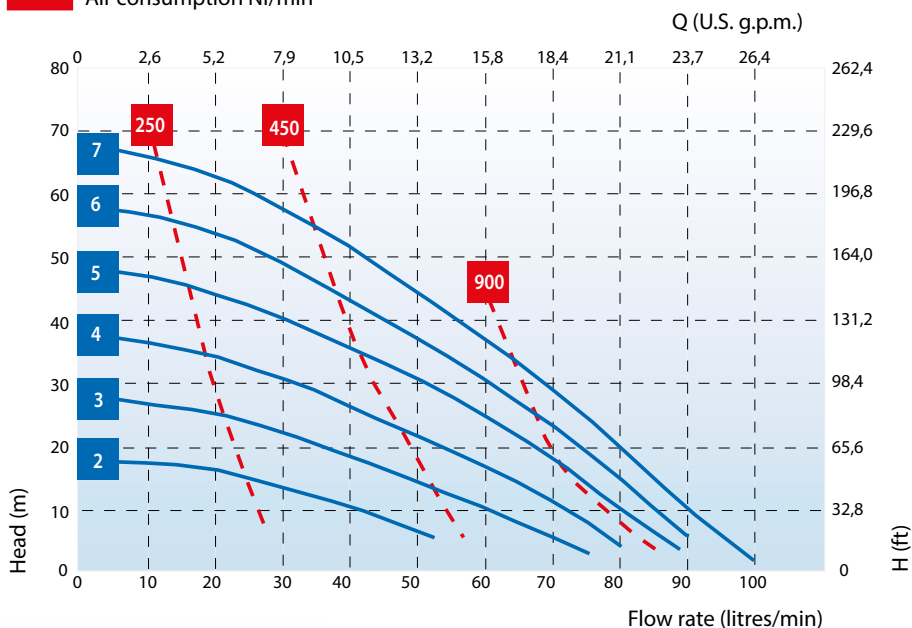


Alu



Aisi 316

Air supply pressure (bar)
 Air consumption NI/min



*The curves and performance values refer to pumps with submerged suction and a free delivery outlet with water at 20°C, and vary according to the construction material. ** The value depends on the configuration of the pump.

Intake/delivery connections G 1" fo DN 25 (*)

Air connection G 3/8" f

Max. self-priming capacity** 6 m

Flow rate max* 100 l/min

Max. head* 70 m

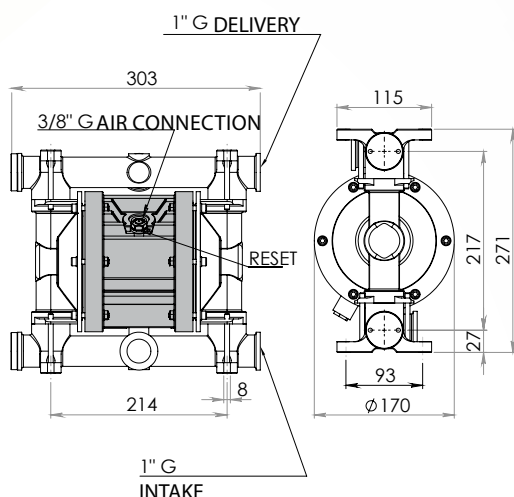
Max. air supply pressure 7 bar

Max. diameter of passing solids 4 mm

Construction materials and net weight	PP	5 Kg	65°C Max Temp.
	PVDF	6,5 Kg	95°C Max Temp.
	Alu	6,5 Kg	95°C Max Temp.
	Aisi 316	10,5 Kg	95°C Max Temp.

(*) NPT connections on request

B80



B81

