
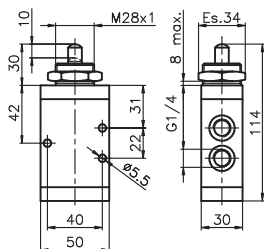
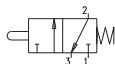

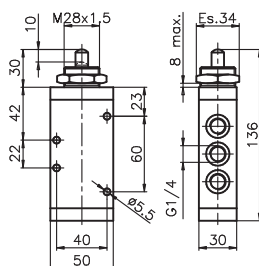


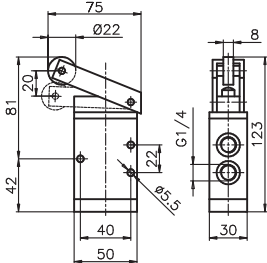
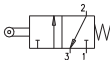

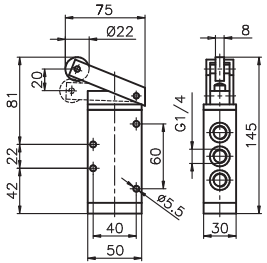
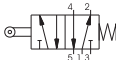

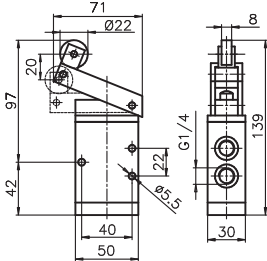
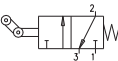
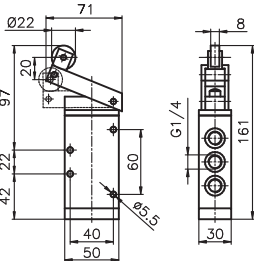
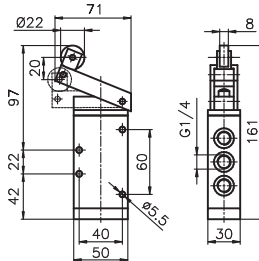
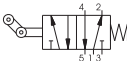


Tappet panel-Spring		3/2	Ordering code	5/2	Tappet panel-Spring	
<div></div> <div></div> <div><p>Weight gr. 370 Operating force 71,5N</p></div>			<b>224.1.1.1</b>	<div></div> <div></div> <div><p>Weight gr. 455 Operating force 71,5N</p></div>		
			TYPE			
			32 = 3 ways			
			52 = 5 ways			
<b>Operational characteristics</b>						
Fluid			Max working pressure		Operating Temperature	
Filtered air, with or without lubrication			10 bar		Min. -5°C Max. +70°C	
					Flow rate at 6 bar with Δp=1	
					1360 Nl/min	
					Orifice size	
					mm 8	
					Working port size	
					G 1/4"	

Lever roller-Spring		3/2	Ordering code	5/2	Lever roller-Spring		
  <p>Weight gr. 510 Operating force 35N</p> 			<b>224. <span>T</span>. 2. 1</b>	  <p>Weight gr. 595 Operating force 35N</p> 			
			TYPE				
			<b>T</b> 32 = 3 ways				
			52 = 5 ways				
Operational characteristics	Fluid	Max working pressure	Operating Temperature		Flow rate at 6 bar with $\Delta p=1$	Orifice size	Working port size
	Filtered air, with or without lubrication	10 bar	Min. -5°C	Max. +70°C	1360 Nl/min	mm 8	G 1/4"

Lever roller unidirectional-Spring		3/2	Ordering code	5/2	Lever roller unidirectional-Spring		
  <p>Weight gr. 525 Operating force 35N</p> 			<b>224.1.3.1</b>	  <p>Weight gr. 610 Operating force 35N</p> 			
			TYPE				
			32 = 3 ways				
			52 = 5 ways				
Operational characteristics	Fluid	Max working pressure	Operating Temperature		Flow rate at 6 bar with $\Delta p=1$	Orifice size	Working port size
	Filtered air, with or without lubrication	10 bar	Min. -5°C Max. +70°C		1360 Nl/min	mm 8	G 1/4"

1

Push button-Spring

3/2

Ordering code

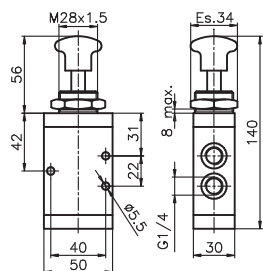
224.1.8.1

TYPE

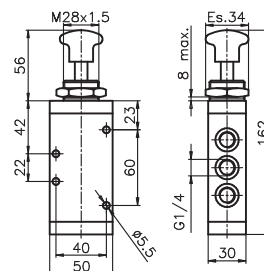
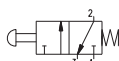
32 = 3 ways  
52 = 5 ways

5/2

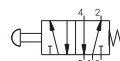
Push button-Spring



Weight gr. 395  
Operating force 71,5N



Weight gr. 480  
Operating force 71,5N



Operational characteristics

Fluid	Max working pressure	Operating Temperature	Flow rate at 6 bar with $\Delta p=1$	Orifice size	Working port size
Filtered air, with or without lubrication	10 bar	Min. -5°C Max. +70°C	1360 NI/min	mm 8	G 1/4"

Push button 2 positions

3/2

Ordering code

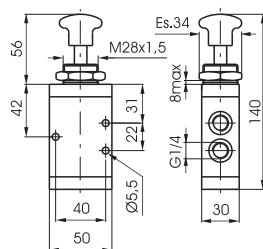
224.1.8

TYPE

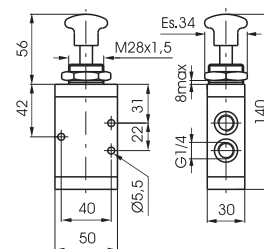
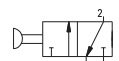
32 = 3 ways  
52 = 5 ways

5/2

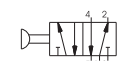
Push button 2 positions



Weight gr. 385  
Operating force 105N



Weight gr. 470  
Operating force 10N



Operational characteristics

Fluid	Max working pressure	Operating Temperature	Flow rate at 6 bar with $\Delta p=1$	Orifice size	Working port size
Filtered air, with or without lubrication	10 bar	Min. -5°C Max. +70°C	1360 NI/min	mm 8	G 1/4"

Lever lateral-Spring

3/2

Ordering code

224.1.9.1/C

TYPE

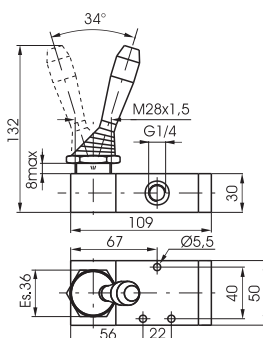
32 = 3 ways  
52 = 5 ways

BUTTON COLOR

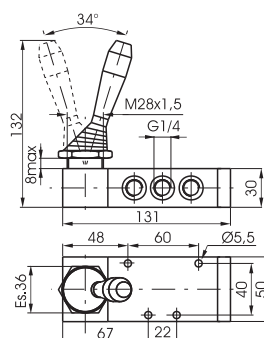
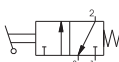
1 = Red  
2 = Black  
3 = Green

5/2

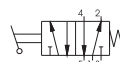
Lever lateral-Spring



Weight gr. 520


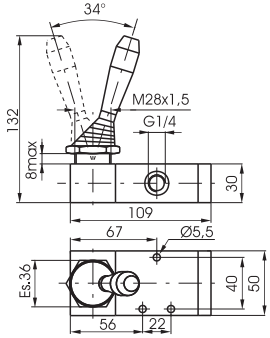

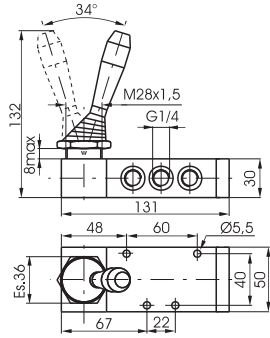
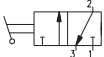



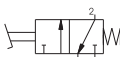
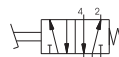
Weight gr. 605


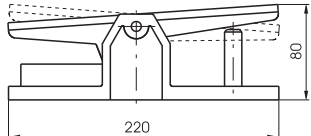
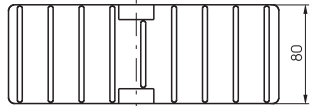
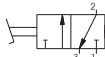
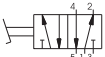


Operational characteristics

Fluid	Max working pressure	Operating Temperature	Flow rate at 6 bar with $\Delta p=1$	Orifice size	Working port size
Filtered air, with or without lubrication	10 bar	Min. -5°C Max. +70°C	1360 NI/min	mm 8	G 1/4"

Lever lateral 2 positions			3/2	Ordering code	5/2	Lever lateral 2 positions		
 			<b>224.1.9/C</b> TYPE 32 = 3 ways 52 = 5 ways BUTTON COLOR 1 = Red 2 = Black 3 = Green			 		
Weight gr. 510						Weight gr. 595		
Operational characteristics	Fluid	Max working pressure	Operating Temperature		Flow rate at 6 bar with $\Delta p=1$	Orifice size	Working port size	
	Filtered air, with or without lubrication	10 bar	Min. -5°C Max. +70°C		1360 Nl/min	mm 8	G 1/4"	

Pedal aluminium-Spring							
Ordering code							
224.1.10.1							
TYPE							
32 = 3 ways 52 = 5 ways							
Weight gr. 1.070 (3/2) Weight gr. 1.155 (3/2)							
Operational characteristics	Fluid	Max working pressure	Operating Temperature		Flow rate at 6 bar with $\Delta p=1$	Orifice size	Working port size
	Filtered air, with or without lubrication	10 bar	Min. -5°C	Max. +70°C	1360 Nl/min	mm 8	G 1/4"

Pedal aluminium 2 positions							
Ordering code							
224.10							
TYPE							
32 = 3 ways 52 = 5 ways							
Weight gr. 1.060 (3/2) Weight gr. 1.145 (3/2)		 					
		 					
Operational characteristics	Fluid	Max working pressure	Operating Temperature		Flow rate at 6 bar with $\Delta p=1$	Orifice size	Working port size
	Filtered air, with or without lubrication	10 bar	Min. -5°C	Max. +70°C	1360 Nl/min	mm 8	G 1/4"

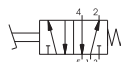
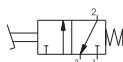
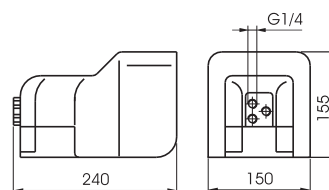
### Pedal protected-Spring

Ordering code

**214.T.10.V**

<b>T</b>	TYPE
	32 = 3 ways
	52 = 5 ways
<b>V</b>	VERSION
	1/1 = Standard version
	2/1 = without safety device

Weight gr. 1.730



#### Operational characteristics

Fluid	Max working pressure	Operating Temperature	Flow rate at 6 bar with $\Delta p=1$	Orifice size	Working port size
Filtered air, with or without lubrication	10 bar	Min. -5°C Max. +70°C	1360 NI/min	mm 8	G 1/4"

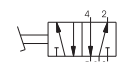
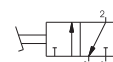
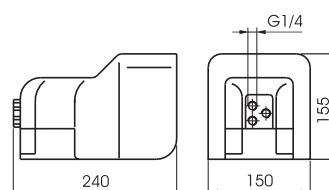
### Pedal protected 2 positions

Ordering code

**214.T.10/1**

<b>T</b>	TYPE
	32 = 3 ways
	52 = 5 ways

Weight gr. 1.730



#### Operational characteristics

Fluid	Max working pressure	Operating Temperature	Flow rate at 6 bar with $\Delta p=1$	Orifice size	Working port size
Filtered air, with or without lubrication	10 bar	Min. -5°C Max. +70°C	1360 NI/min	mm 8	G 1/4"

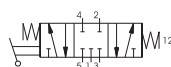
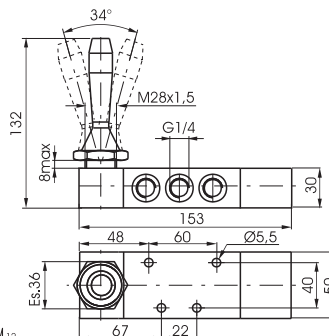
### Lever lateral spring 3 positions

Ordering code

**224.53.F.9.1/C**

<b>F</b>	FUNCTION
	31 = Closed centres
	32 = Open centres
<b>C</b>	BUTTON COLOR
	1 = Red
	2 = Black
	3 = Green

Weight gr. 745



#### Operational characteristics

Fluid	Max working pressure	Operating Temperature	Flow rate at 6 bar with $\Delta p=1$	Orifice size	Working port size
Filtered air, with or without lubrication	10 bar	Min. -5°C Max. +70°C	1280 NI/min	mm 8	G 1/4"

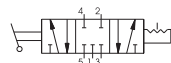
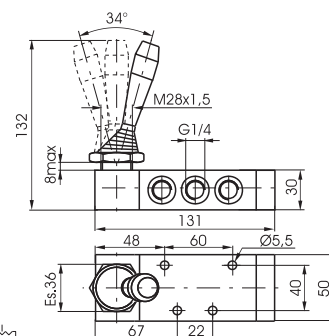
### Lever lateral 3 positions

Ordering code

**224.53.F.9/C**

<b>F</b>	FUNCTION
	31 = Closed centres
	32 = Open centres
<b>C</b>	BUTTON COLOR
	1 = Red
	2 = Black
	3 = Green

Weight gr. 605



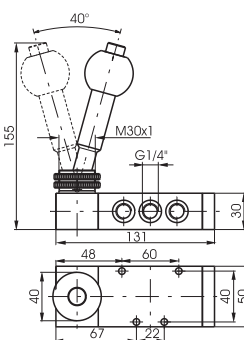
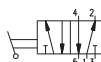
#### Operational characteristics

Fluid	Max working pressure	Operating Temperature	Flow rate at 6 bar with $\Delta p=1$	Orifice size	Working port size
Filtered air, with or without lubrication	10 bar	Min. -5°C Max. +70°C	1280 NI/min	mm 8	G 1/4"

### Lever lateral with locking device-2 positions

Ordering code
<b>224.52.9.2</b>

Weight gr. 825

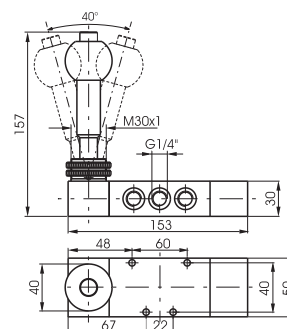
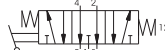
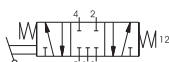


Operational characteristics	Fluid	Max working pressure	Operating Temperature		Flow rate at 6 bar with $\Delta p=1$	Orifice size	Working port size
	Filtered air, with or without lubrication	10 bar	Min. -5°C	Max. +70°C	1020 NI/min	mm 8	G 1/4"

### Lever lateral with locking device-Spring 3 positions

Ordering code
<b>224.53.F.9.2</b>
FUNCTION
<b>F</b> 31 = Closed centres
32 = Open centres

Weight gr. 965

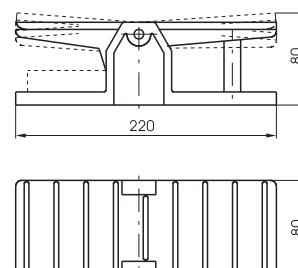
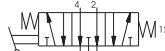
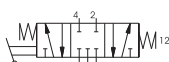


Operational characteristics	Fluid	Max working pressure	Operating Temperature		Flow rate at 6 bar with $\Delta p=1$	Orifice size	Working port size
	Filtered air, with or without lubrication	10 bar	Min. -5°C	Max. +70°C	1020 NI/min	mm 8	G 1/4"

### Pedal-Spring 3 positions

Ordering code
<b>224.53.F.10.1</b>
FUNCTION
<b>F</b> 31 = Closed centres
32 = Open centres

Weight gr. 1.285

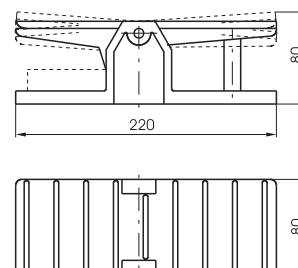


Operational characteristics	Fluid	Max working pressure	Operating Temperature		Flow rate at 6 bar with $\Delta p=1$	Orifice size	Working port size
	Filtered air, with or without lubrication	10 bar	Min. -5°C	Max. +70°C	1280 NI/min	mm 8	G 1/4"

### Pedal 3 positions

Ordering code
<b>224.53.F.10</b>
FUNCTION
<b>F</b> 31 = Closed centres
32 = Open centres

Weight gr. 1.145



Operational characteristics	Fluid	Max working pressure	Operating Temperature		Flow rate at 6 bar with $\Delta p=1$	Orifice size	Working port size
	Filtered air, with or without lubrication	10 bar	Min. -5°C	Max. +70°C	1280 NI/min	mm 8	G 1/4"