

1

Lever lateral-Spring

3/2

Ordering code

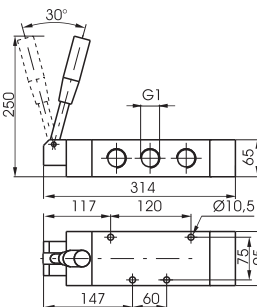
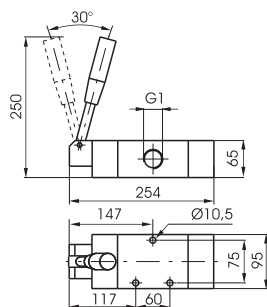
211.1.9.1

TYPE

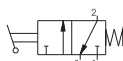
- 32 = 3 ways
- 52 = 5 ways

5/2

Lever lateral-Spring



Weight gr. 4.300



Weight gr. 4900

Operational characteristics	Fluid	Max working pressure	Operating Temperature		Flow rate at 6 bar with $\Delta p=1$	Orifice size	Working port size
	Filtered air, with or without lubrication	10 bar	Min. -5°C	Max. +70°C	6500 NI/min	mm 20	G 1"

Lever lateral 2 positions

3/2

Ordering code

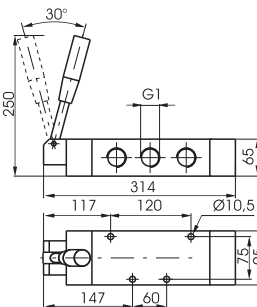
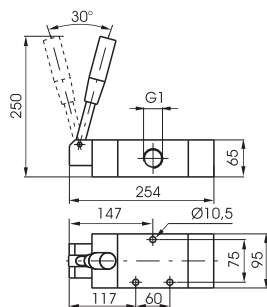
211.1.9

TYPE

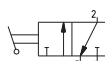
- 32 = 3 ways
- 52 = 5 ways

5/2

Lever lateral 2 positions



Weight gr. 4.300



Weight gr. 4900

Operational characteristics	Fluid	Max working pressure	Operating Temperature		Flow rate at 6 bar with $\Delta p=1$	Orifice size	Working port size
	Filtered air, with or without lubrication	10 bar	Min. -5°C	Max. +70°C	6500 NI/min	mm 20	G 1"

Lever lateral-Spring 3 positions

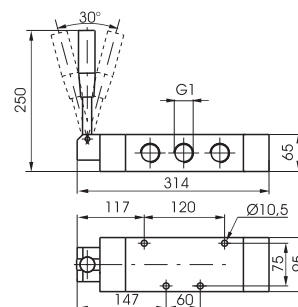
5/3

Ordering code

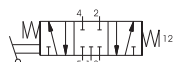
211.53.F.9.1

FUNCTION

- 31 = Closed centres
- 32 = Open centres



Weight gr. 5.000

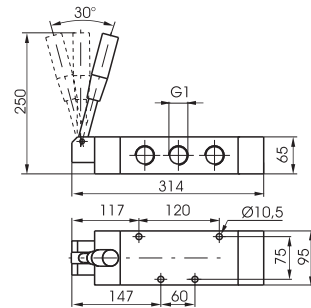


Operational characteristics	Fluid	Max working pressure	Operating Temperature		Flow rate at 6 bar with $\Delta p=1$	Orifice size	Working port size
	Filtered air, with or without lubrication	10 bar	Min. -5°C	Max. +70°C	6500 NI/min	mm 20	G 1"

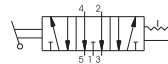
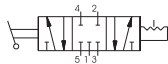
Lever lateral-3 positions

5/3

Ordering code
211.53.F.9
FUNCTION
F 31 = Closed centres
32 = Open centres



Weight gr. 5.000



Operational characteristics	Fluid	Max working pressure	Operating Temperature		Flow rate at 6 bar with $\Delta p=1$	Orifice size	Working port size
	Filtered air, with or without lubrication	10 bar	Min. -5°C	Max. +70°C	6500 Nl/min	mm 20	G 1"

1