

1

**Pneumatic-Spring**

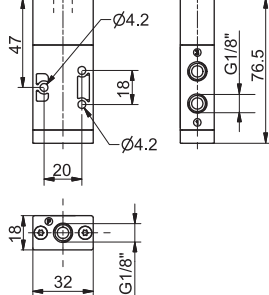
3/2

Ordering code

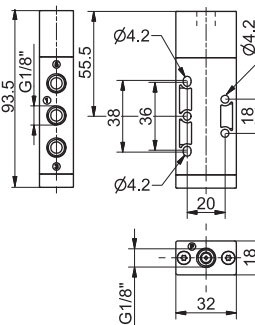
**T228.11.1**

5/2

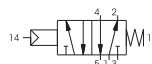
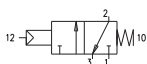
**Pneumatic-Spring**



TYPE  
32 = 3 ways  
52 = 5 ways



Weight gr. 65  
Minimum operating pressure 2,5 bar



Weight gr. 78  
Minimum operating pressure 2,5 bar

Operational characteristics	Fluid	Max working pressure	Operating Temperature		Flow rate at 6 bar with $\Delta p=1$	Orifice size	Working ports size	Pilot ports size
	Filtered air, with or without lubri-	10 bar	Min. -5°C	Max. +50°C	620 Nl/min	mm 6	G 1/8"	G 1/8"

**Pneumatic-Differential (external)**

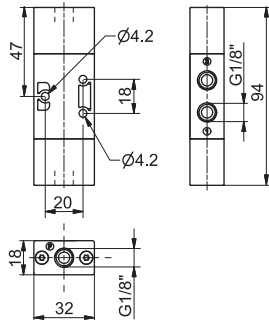
3/2

Ordering code

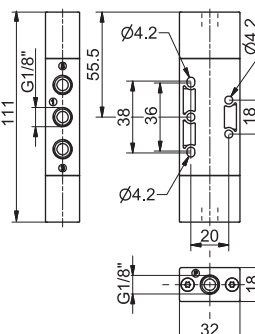
**T228.11.12**

5/2

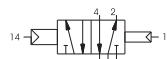
**Pneumatic-Differential (external)**



TYPE  
32 = 3 ways  
52 = 5 ways



Weight gr. 74  
Minimum operating pressure 2,5 bar



Weight gr. 86  
Minimum operating pressure 2,5 bar

Operational characteristics	Fluid	Max working pressure	Operating Temperature		Flow rate at 6 bar with $\Delta p=1$	Orifice size	Working ports size	Pilot ports size
	Filtered air, with or without lubri-	10 bar	Min. -5°C	Max. +50°C	620 Nl/min	mm 6	G 1/8"	G 1/8"

**Pneumatic-Differential self-feeding**

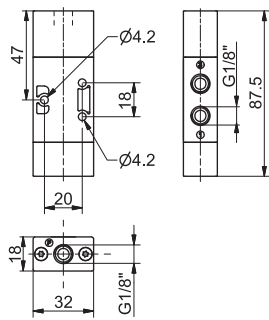
3/2

Ordering code

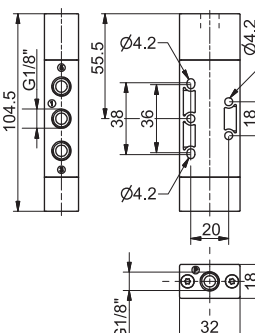
**T228.11.12/1**

5/2

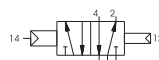
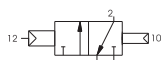
**Pneumatic-Differential self-feeding**



TYPE  
32 = 3 ways  
52 = 5 ways

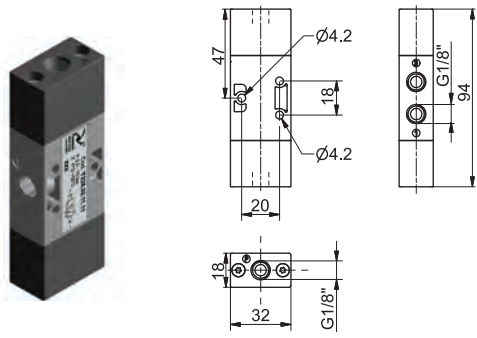
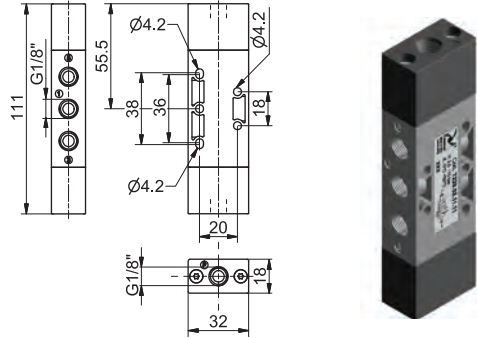
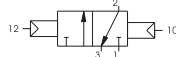


Weight gr. 70  
Minimum operating pressure 2,5 bar


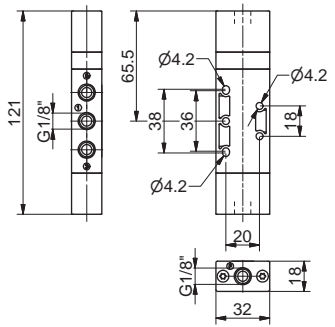
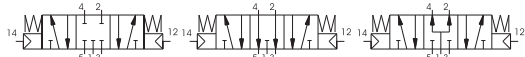


Weight gr. 82  
Minimum operating pressure 2,5 bar

Operational characteristics	Fluid	Max working pressure	Operating Temperature		Flow rate at 6 bar with $\Delta p=1$	Orifice size	Working ports size	Pilot ports size
	Filtered air, with or without lubri-	10 bar	Min. -5°C	Max. +50°C	620 Nl/min	mm 6	G 1/8"	G 1/8"

<b>Pneumatic-Pneumatic</b>	3/2	Ordering code <b>T228.1.11.11</b>	5/2	<b>Pneumatic-Pneumatic</b>
		<p><b>TYPE</b></p> <p>32 = 3 ways</p> <p>52 = 5 ways</p>		
<p>Weight gr. 77 Minimum operating pressure 2 bar</p>			<p>Weight gr. 90 Minimum operating pressure 2 bar</p>	

Operational characteristics	Fluid	Max working pressure 10 bar	Operating Temperature		Flow rate at 6 bar with Δp=1 620 NI/min	Orifice size mm 6	Working ports size G 1/8"	Pilot ports size G 1/8"
	Filtered air, with or without lubri-		Min. -5°C	Max. +50°C				

<b>Pneumatic-Pneumatic 3 positions</b>				5/3
<p>Ordering code <b>T228.53.F.11.11</b></p> <p>FUNCTION</p> <p><b>F</b> 32 = Open Centres</p> <p>33 = Pressured Centres</p>				
<p>Weight gr. 110 Minimum operating pressure 3 bar</p>				

Operational characteristics	Fluid	Max working pressure 10 bar	Operating Temperature		Flow rate at 6 bar with Δp=1 410 NI/min	Orifice size mm 6	Working ports size G 1/8"	Pilot ports size G 1/8"
	Filtered air, with or without lubri-		Min. -5°C	Max. +50°C				