

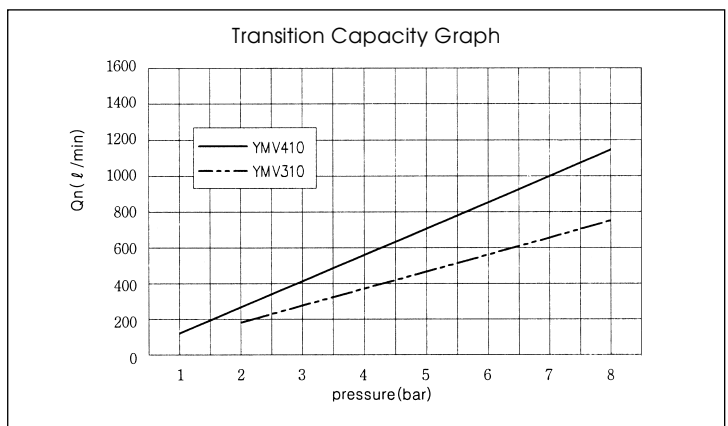
YMV Series

Manually & Mechanically Actuated Spool Valves

- 3/2
- Direct Operation Type
- A Wide Range of Option available
- Simple Panel Mounting

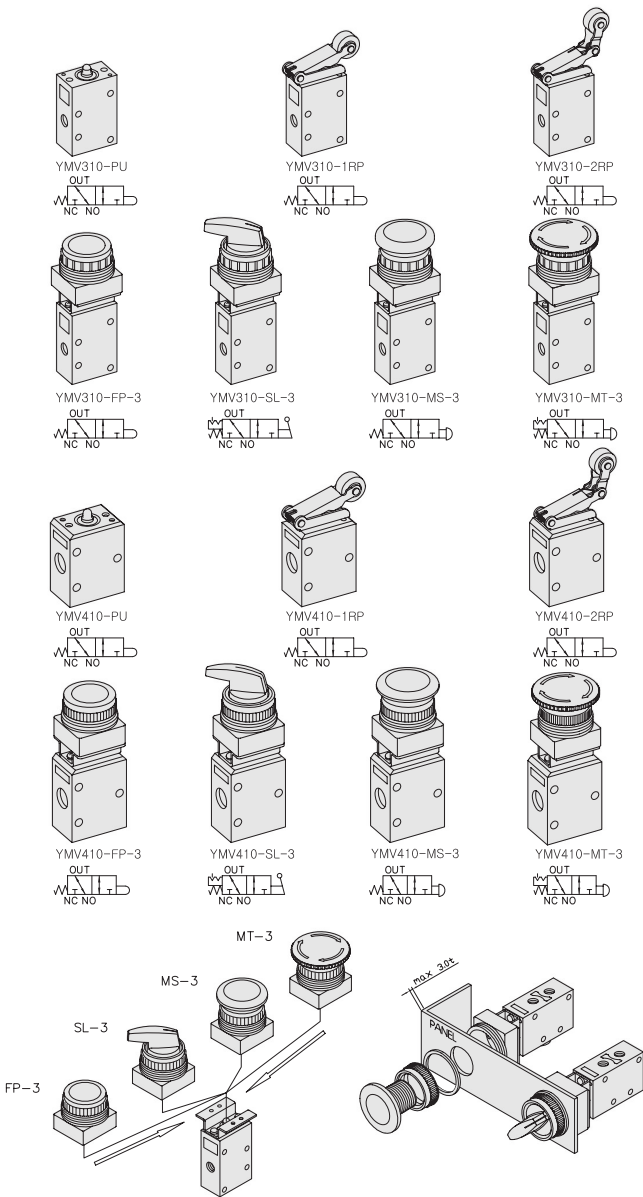
SPECIFICATION

ITEM	SERIES	YMV310	YMV410
FUNCTION		3/2-Way	
Fluids		Compressed Air & Inert Gases	
Port Size		1/8	1/4
Pressure(bar)		0~8.0	
Eff. Sectional Area(mm ²)-5bar		10.5	16.0
Ambient & Fluid Temp.		5~60°C (41~140°F)	
Lubrication		Not Required(Use ISO VG32#)	



- ### The Material of Parts
- Valve Body : Die-Cast Aluminium
 - Switch Parts : Glass Filled Nylon, POM
 - Spool : Aluminium
 - Seals : NBR
 - Spring : Stainless
 - Button Parts : Stainless Steel, POM

※ The specification on each item can be amended without any prenotice to improve a performance.
 ※ The specification on each item can be different from actual specification.

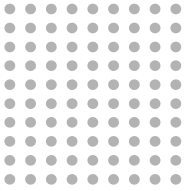


ORDERING NO.

YMV3 1 0 - FP - 3

Valve Series	Function	Port Size & Thread	Switch Type	Mounting Holes
YMV3: 1/8-Port Body	1 3/2 - Spring Return	0 G 1 NPT	PU Pushrod 1RP Two-way Plastic Roller Lever 1RB Two-way Bearing Roller Lever 2RP One-way Plastic Roller Lever 2RB One-way Bearing Roller Lever FP Flush, Push Button (R) SL 2-Position Selector (B) MS Mushroom 40mm dia Spring Return (R) MT Mushroom 40mm dia Turn to Unlock (R)	3 30mm

() Standard Color



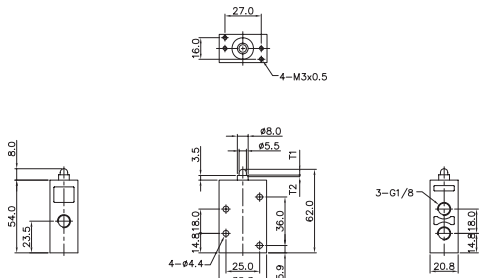
Manually & Mechanically Actuated Spool Valves

Port Thread 1/8, 1/4

3/2-Way, Direct Pushrod Operation Thread-1/8

T1	Valid Operation Dist	3.5mm
T2	Invalid Operation Dist	1.0mm
F1	Pressure for Valid Operation	3.5kgf
F2	Pressure for Invalid Operation	

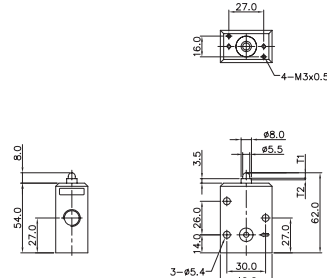
YMV310-PU



3/2-Way, Direct Pushrod Operation Thread-1/4

T1	Valid Operation Dist	3.5mm
T2	Invalid Operation Dist	1.0mm
F1	Pressure for Valid Operation	3.5kgf
F2	Pressure for Invalid Operation	

YMV410-PU



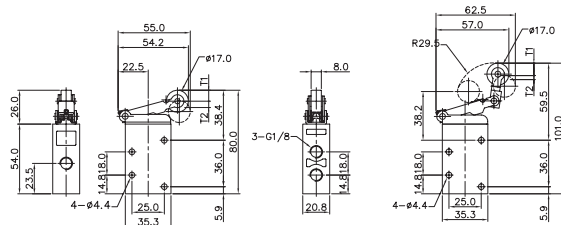
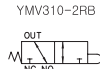
3/2-Way, Direct Roller Lever Operation Thread-1/8

	YMV310-1RP	YMV310-2RP
T1	Valid Operation Dist	8.5mm 9.0mm
T2	Invalid Operation Dist	3.0mm 3.5mm
F1	Pressure for Valid Operation	2.0kgf 2.0kgf
F2	Pressure for Invalid Operation	

YMV310-1RP



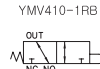
YMV310-2RP



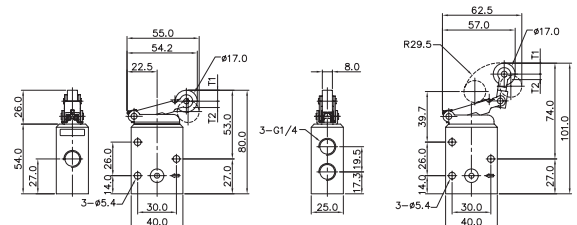
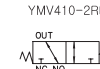
3/2-Way, Direct Roller Lever Operation Thread-1/4

	YMV410-1RP	YMV410-2RP
T1	Valid Operation Dist	8.0mm 9.0mm
T2	Invalid Operation Dist	3.0mm 3.5mm
F1	Pressure for Valid Operation	2.0kgf 2.0kgf
F2	Pressure for Invalid Operation	

YMV410-1RP



YMV410-2RP



3/2-Way, Direct Pushrod & Selector Operation Thread-1/8

T1	Valid Operation Dist	5.5mm
T2	Invalid Operation Dist	1.0mm
F1	Pressure for Valid Operation	3.5kgf
F2	Pressure for Invalid Operation	

YMV310-FP-3



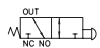
Flush, Push Button

YMV310-SL-3



2-Position Selector

YMV310-MS-3

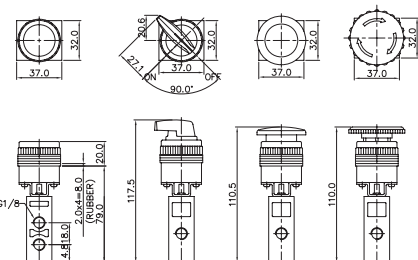


Dia Spring Return

YMV310-MT-3



Turn to unlock



3/2-Way, Direct Pushrod & Selector Operation Thread-1/4

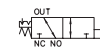
T1	Valid Operation Dist	5.5mm
T2	Invalid Operation Dist	1.0mm
F1	Pressure for Valid Operation	3.5kgf
F2	Pressure for Invalid Operation	

YMV410-FP-3



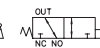
Flush, Push Button

YMV410-SL-3



2-Position Selector

YMV410-MS-3



Dia Spring Return

YMV410-MT-3



Turn to unlock

