



MGE.R BOTTOM Dial 40 - 50 - 63 mm

Use

Pressure gauges suitable for all process gaseous and liquid that don't attack copper alloy parts. Intended for adverse service conditions where pulsating or vibration exists. Hydraulics, Compressors

Description

Pressure gauge made according UNI EN 837.1 norms

- Stainless steel case aisi 304 dial - Dial 40 - 50 - 63 mm. protection degree IP65
- BRASS Spring, movement and pivot
- BOTTOM execution
- conical (UNI EN 10226) connection on dial 40 - cylindrical (ISO 228) connection on dial 50 and 63
- Aluminium index, Aluminium dial White background
- Black BAR scale and Red PSI (except compound gauge)
- Accuracy 2,5% on dial 40 and 50 - Accuracy 1,6% on dial 63

Using range

Working Temperature: -10 +60° C (+14 +140° F)

Working Pressure: Steady 75% - Variable 60%

Overpressure: 25% < 60 bar >15% (according EN837.1)

Models

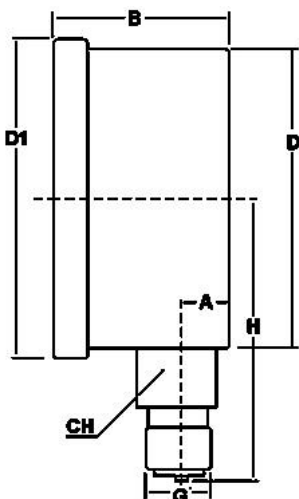
Normalized range: Vacuum -1 / 0 Bar+CmHg;

Compound -1+0,6; -1+1,5; -1+3; -1+5; -1+9; -1+15 BAR only;

0.6; 1; 1,6; 2,5; 4; 6; 10; 12; 16; 25; 40; 60; 100; 160; 250; 315; 400; 600; 1000 Bar + Psi

Options

NPT ANSI B.1.20.1 thread, With or without Glycerin, OXYGEN SERVICE, customize range, scale or logo;
Coloured sector; Bottom connection @ 3 / 9 / 12 hours; refrigerants range with UNF connection



Available sizes

VAR	A	B	D	D1	H	G	CH	Kg	Lotto
dn 40	0,5	25	40,5	44	38	1/8" BSPT	11	0,110	100
dn 50	10	30	52	57	49	1/4" BSPP	14	0,145	100
dn 63	10	29	62	68	57	1/4" BSPP	14	0,207	50