

SILVERSTONE

MATERIAL HANDLING



FAST AND EFFECTIVE MATERIAL HANDLING

Having 11.000 sqm. we need to practice what we preach.

Effective logistics gives you the fastest deliveries for products in stock.

We should mention that we have full range in stock.

You simply save time.

... Everyone knows time is money.

Knowing from start that our assortment is very affordable should make you start turning these pages at once.

Welcome.



Silverstone Group

Silverstone was established in 1995 and is today one of the biggest distributor for light material handling equipment in Europe. Our goal is to provide a broad mix of priceworthy products. We also aim to have all products in stock to provide quick deliveries. Our head office is located in Ljungby, Sweden.



T20-15ET

4-7



T20-16M

8-9



T20-20WA

10-11



T20-20RA

12-13



E-STACKER

14-16



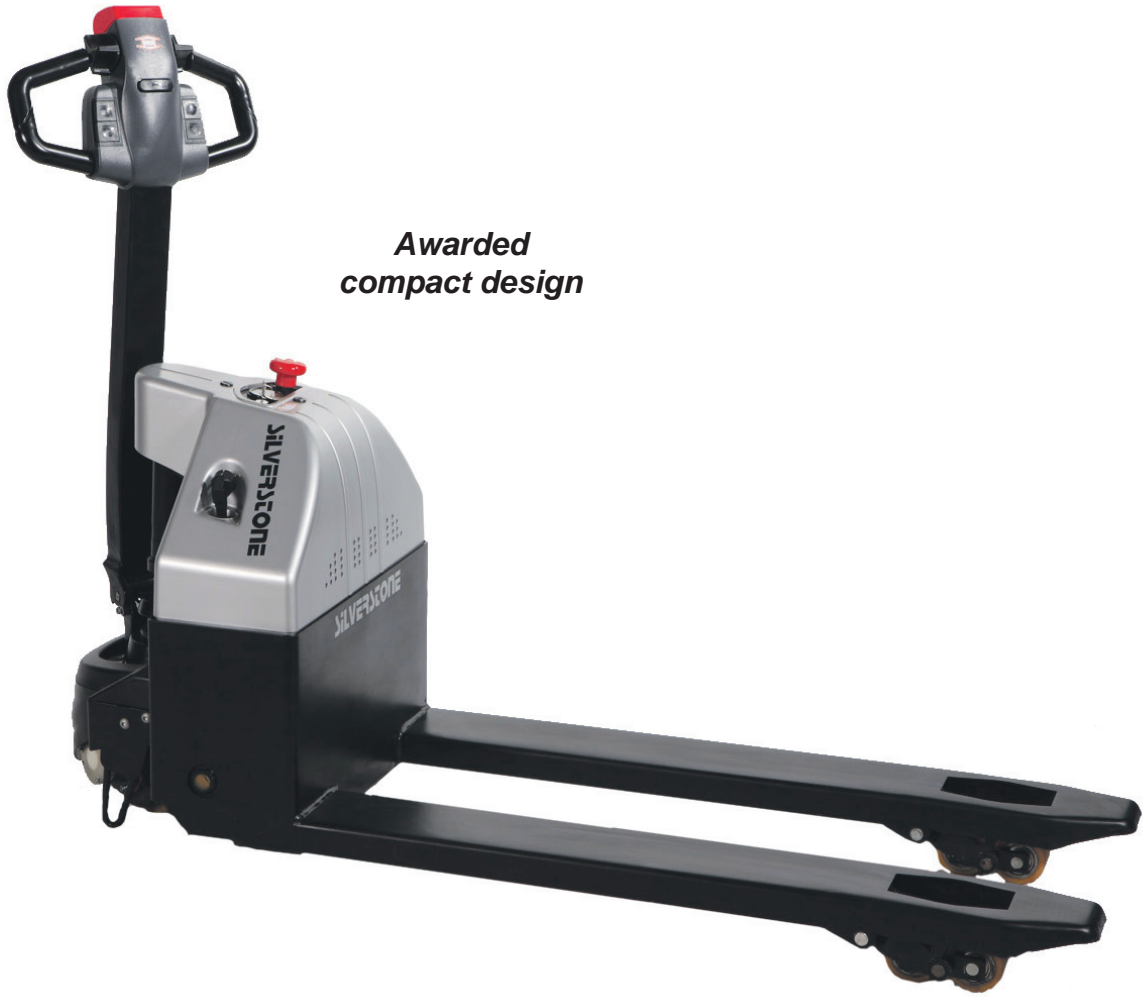
**ES14-14RA/
ES16-16RA**

17-19



CK-05 & Other assortment

20-23



*Awarded
compact design*



*Battery indicator and
emergency stop*



Ergonomically designed handle

Small but Strong

We have often been asked why the full electric pallet trucks are so expensive. "We do not run the machine for more than a few hours a day but then the machine must be able to take a heavy load" Now we have a solution to the problem and to a very attractive price.

We are now pleased to present Silverstone T20-15ET. The thoughts behind the machine has been that to create a strong and smooth full electric mini mover with minimal resources which makes work easy and saves both time and money. We believe the outcome of this is very successful.

Many advantages

- Built in charger.
- Battery of 24 volts and 60 amps, lasts for a normal working day.
- Curtis controller provides reliability and is easily adapted to the operator.
- Electromagnetic disc brake ensures that braking is always safe and reliable.
- A throughout safety thinking have among many things resulted in a creep function and an automatic decrease of speed at sturdy or sudden turnings.
- Friendly to operator's arms and shoulders. Ergonomically designed handle and controls makes the machine comfortable and easy to operate.
- Saves operator power and energy. With a capacity of 1500 kg machine can handle most pallets.
- Reduces the risk of strain and repetitive strain injuries. Gives a very cheap insurance compared to worn out shoulders. According to Swedish work agency guidelines, maximum load for continuous operation with manual pallet truck should not exceed 100 Nm. Most countries follow the same directives.

References

- Coca-Cola USA (600)
- Carrefour
- Metro



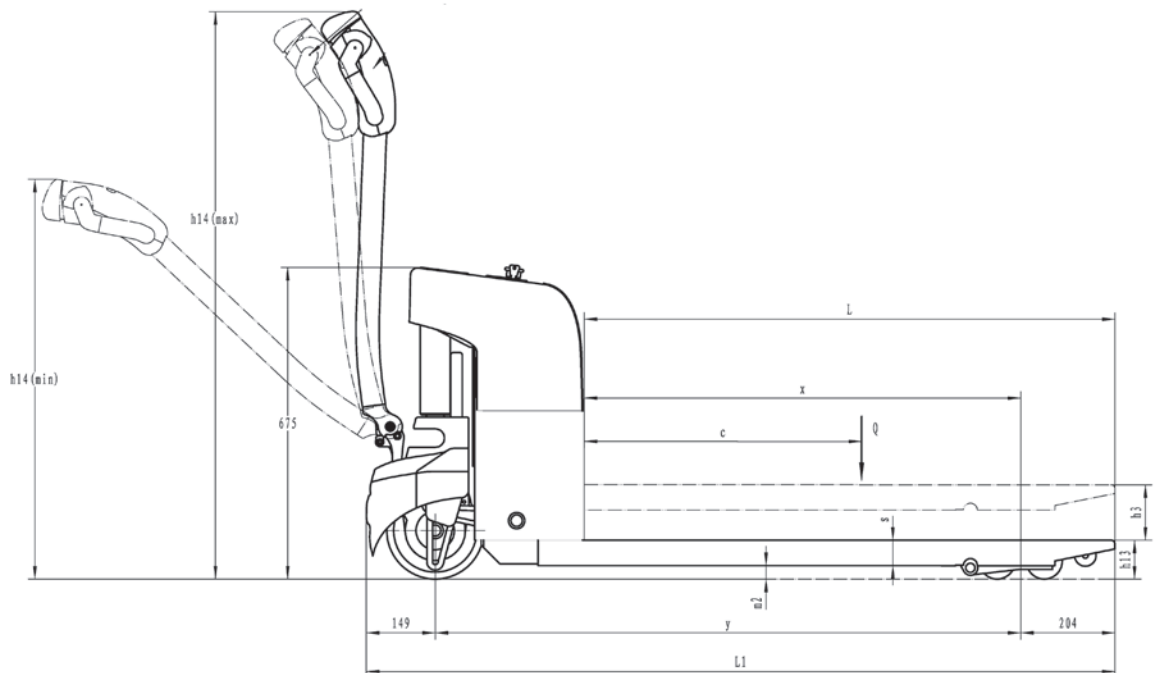
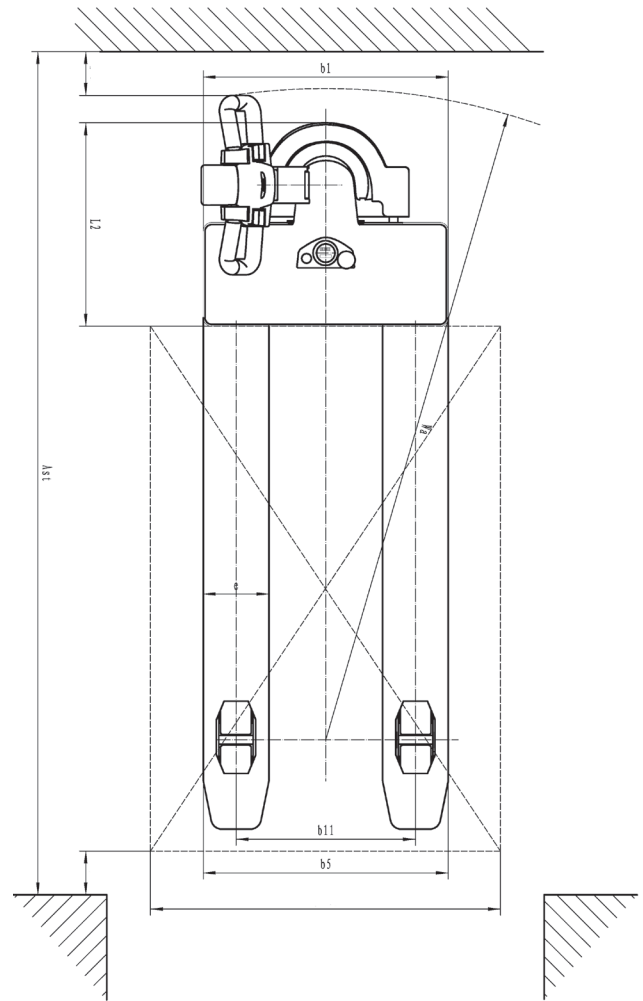
Reliable Curtis controller



Built-in charger

Technical Info

Characteristics		
Model designation		T20-15ET
Drive unit		Battery
Operator type		Walkie
Load capacity	Q (kg)	1500
Load center	c (mm)	600
Load distance	x (mm)	883
Wheelbase	y (mm)	1250
Weights		
Service weight (Incl. battery)	kg	205
Wheels, Chassi		
Tyre type		PU/PU
Tyre size, operator side	mm	Ø210x70
Tyre size, load side	mm	2 x Ø85x60
Wheels, number operator/load side (x=drive wheels)		1x/ 4
Tread, load side	b11 (mm)	380
Dimensions		
Lift height	h3 (mm)	115
Height of tiller arm in operating position, min/ max	h14 (mm)	820/1170
Fork height, lowered	h13 (mm)	85
Overall length	L1 (mm)	1600
Length to face of forks	l2 (mm)	450
Overall width	b1 (mm)	560
Fork dimensions	mm	55x150x1150
Fork spread	b5 (mm)	560
Ground clearance, center of wheebase	m2 (mm)	35
Aisle width, 1000x1200 pallet crossways	Ast (mm)	1779
Aisle width, 800x1200 pallet lengthways	Ast (mm)	1929
Outer turning radius	Wa (mm)	1475
Performance		
Travel speed, with load/ without load	km/ h	3,5/4
Lifting speed, with load/ without load	m/ s	0.051/0.060
Lowering speed, with load/ without load	m/ s	0.052/0.059
Max gradeability, with load/ without load S2 5 min	%	2/6
Service brake		Electromagnetic
Drive		
Drive motor rating S2 60 min	kW	0,65
Lift motor rating at S3 15%	kW	0,84
Battery voltage/ rated capacity (5h)	V/Ah	24/60
Battery weight	kg	22,5x2
Battery compartment dimensions l/ w/ h	mm	260/168/218
Battery type		Maintance free battery
Other		
Type of drive control		DC
Manufacturer		CURTIS
Sound level at operator's ear	dB (A)	74

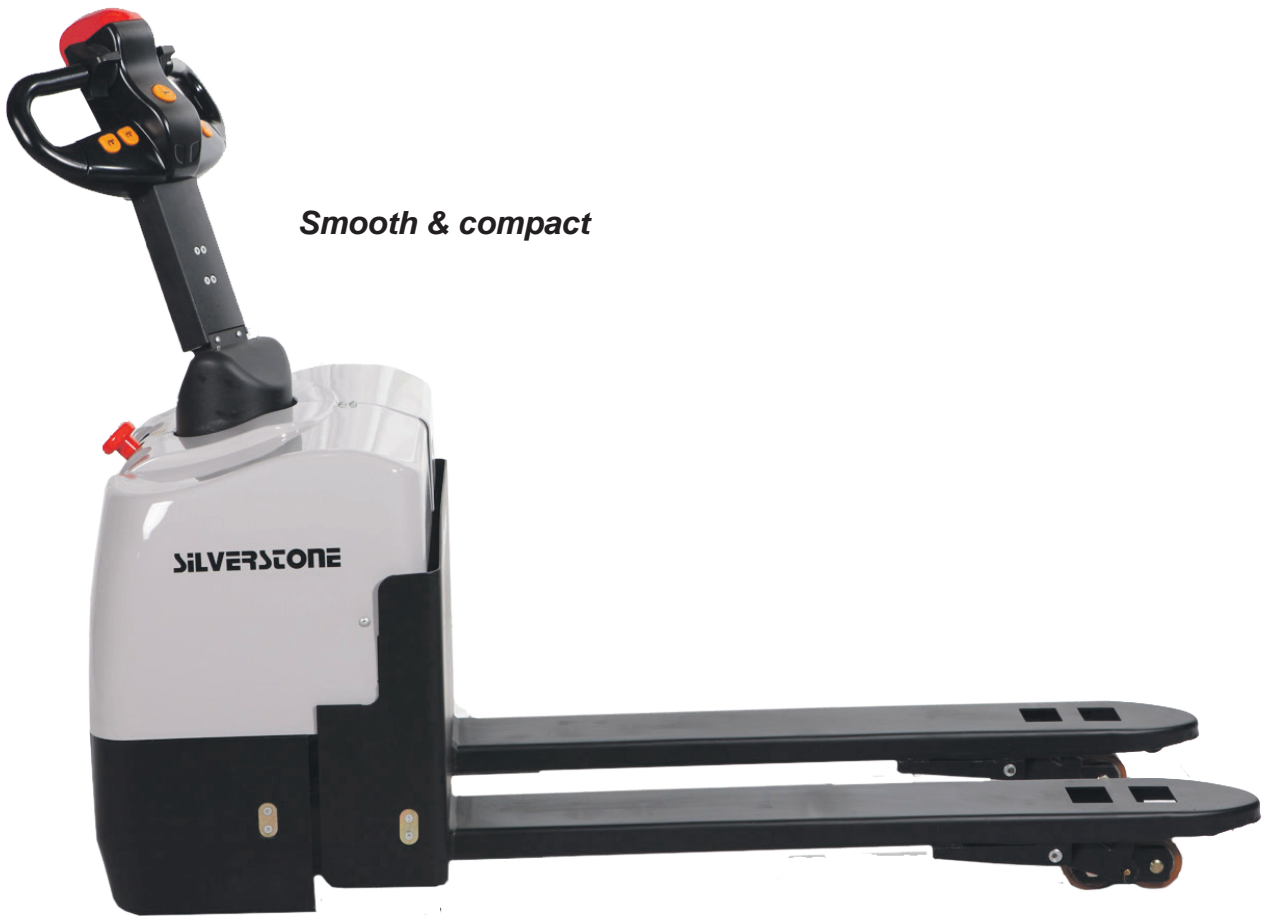




	T20-15ET	Hand pallet truck
Performance	Electric pallet truck with high performance for high efficiency, easy to use, saves time.	Hand pallet truck. Pulled and pumped by the employee which is waste of working time and strength.
Operation	Raises, lowers, moves and turns with the help of electric motors. Ergonomically designed handle makes driving easy and comfortable. Raise and lower with the help of buttons.	Raises, moves and turns using manpower, often a tough and heavy work.
Safety	Designed for maximum safety with focus on the operator, ensures safety under all conditions	Risk for tipping over with heavy loads when moving.
Service friendly	Modular designed which makes servicing and repairs quick and easy, maintenance-free battery.	Simple construction and easy to maintenance.



	T20-15ET	Other electric pallet truck
Performance	Compact, gets through narrow spaces, light weighted and with small effective battery, energy saving.	Large and heavy machine, wide turning radius.
Operation	Smart design, comfortable and easy to drive.	Requires more from the operator, can be perceived as a bit clumsy.
Safety	Designed for maximum safety with focus on the operator, ensures safety under all conditions.	Designed for maximum safety with focus on the operator, ensures safety under all conditions.
Service friendly	Module built which makes service and repairs quick and easy, maintenance-free battery.	Varies with different models.



Smooth & compact



Ergonomically designed handle



Curtis controller with battery indicator

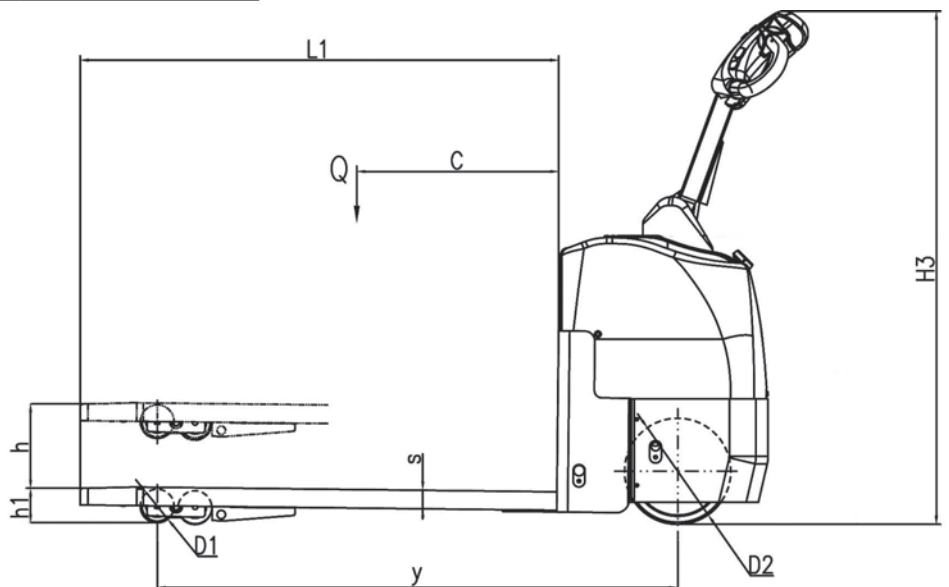
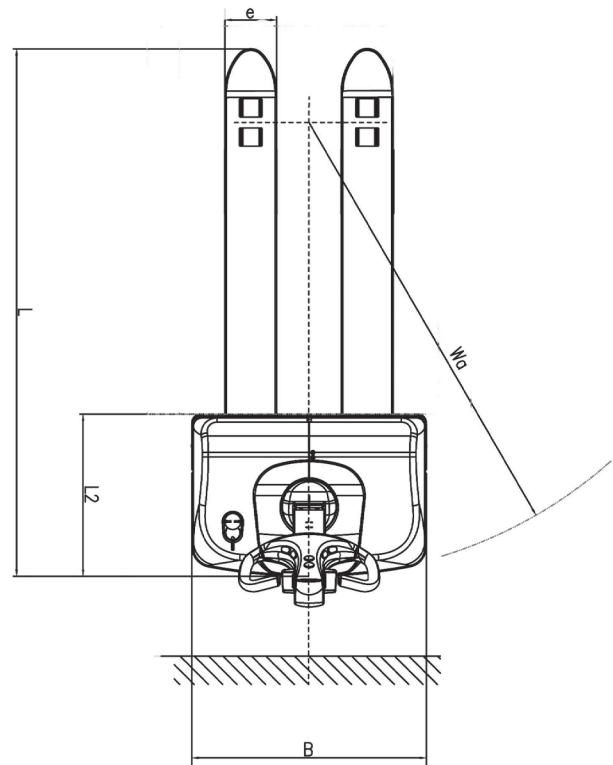
Stable & Smooth

Silverstone T20-16M is a compact and flexible pallet truck that makes its way even in tight spaces. With its twin balance wheels and bogie wheels in forks T20-16M is a stable worker.

An excellent machine for small warehouses, stores and workshops where you sometimes need to handle heavy pallets. Maintenance free batteries makes care and maintenance easy.

Technical Info

Characteristics		
Model designation		T20-16M
Drive unit		Battery
Operator type		Walkie
Load capacity	Q (kg)	1600
Load center	c (mm)	600
Wheelbase	y (mm)	1234
Wheels, Chassi		
Tyre type		PU/PU
Tyre size, operator side	mm	Ø252x67
Tyre size, load side	mm	Ø73x98 (single) Ø80x58 (double)
Balance wheels (dimensions)	mm	Ø99x54
Wheels, number operator/load side (x=drive wheels)		1x+2/2
Dimensions		
Height of tiller arm in operating position, min/ max	H3 (mm)	777/1200
Fork height, lowered	h1 (mm)	85
Lift height	h (mm)	115
Overall length	L1 (mm)	630
Length to face of forks	L2 (mm)	500
Overall width	b1/ B (mm)	724
Fork dimensions	mm	44x160x1150
Fork spread	b5 (mm)	540
Ground clearance, center of wheelbase	mm	40
Aisle width, 1000x1200 pallet crossways	mm	1720
Aisle width, 800x1200 pallet lengthways	mm	1540
Outer turning radius	Wa (mm)	1400
Performance		
Travel speed, with load/ without load	km/ h	3.5/4
Lifting speed, with load/ without load	m/ s	0.056/0.06
Lowering speed, with load/ without load	m/ s	0.057/0.059
Maximum gradeability, with load/ without load S 2 5 min.	%	5/7
Service brake		Electromagnetic
Drive		
Drive motor rating S 2 60 min.	kW	0.6
Lift motor rating at S 3 15%	kW	0.8
Battery voltage/ rated capacity (5h)	V/ Ah	24/70
Battery weight	kg	66
Battery compartment dimensions l/ w/ h	mm	-
Battery type		Maintenance free battery
Other		
Type of drive control		DC
Manufacturer		CURTIS
Sound level at operator's ear	dB (A)	70





180 degree steering



Central water filling system



AC powered

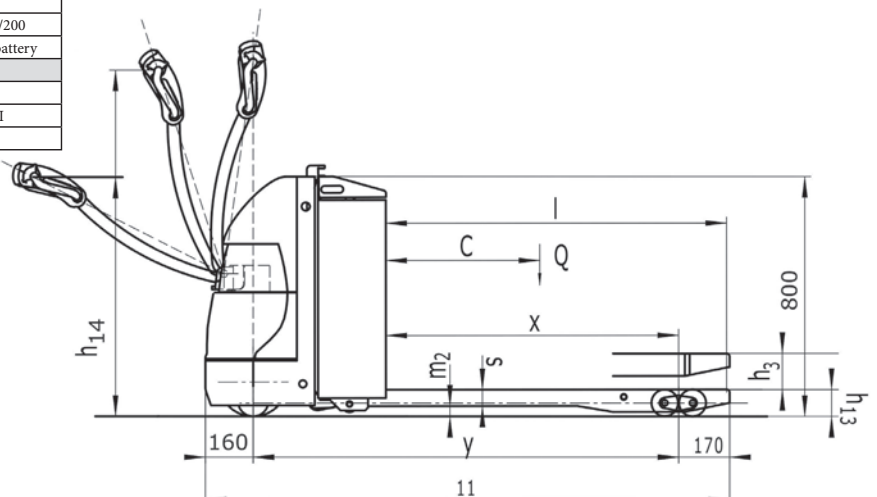
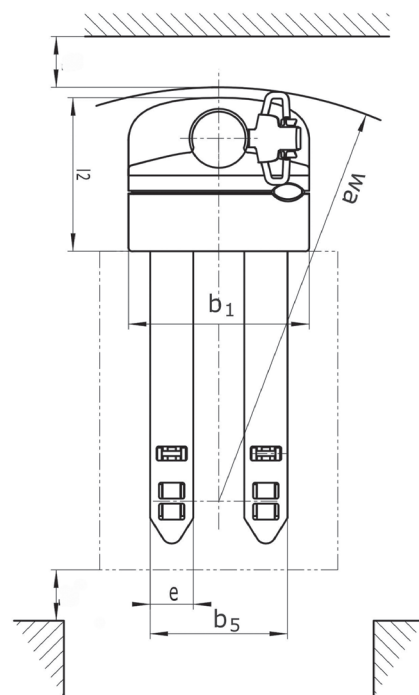
A Powerful Partner

Silverstone T20-20WA is an electrically powered pallet truck for intensive material handling. The latest generation AC motor technology ensures good performance and high security. Regenerative brakes provide good control and reduced wear. All through high quality components are used to get the best usage economy.

The well-designed control lever has easily accessible controls. More than 180 tiller/handle rotation range provides great versatility. Long drawbar provides a good safety distance between operator and machine. 210 Ah battery enables T20-20WA to operate a full working day. Even more powerful batteries are available if needed.

Technical Info

Characteristics		
Model designation		T20-20WA
Drive unit		Battery
Operator type		Walkie
Load capacity	Q (kg)	2000
Load center	c (mm)	600
Load distance	x (mm)	916/982
Wheelbase	y (mm)	1418
Weights		
Service weight (Incl. battery)	kg	535
Axle loading with load, operator/load side	kg	955/1580
Axle loading without load, operator/load side	kg	430/105
Wheels, Chassi		
Tyre type		PU/PU
Tyre size, operator side	mm	Ø230x75
Tyre size, load side	mm	2 x Ø85x70/ Ø85x115
Balance wheels (dimensions)	mm	Ø85x48
Wheels, number operator/load side (x=drive wheels)		1x+2/2 or 4
C/C, operator side	mm	498
C/C, load side	mm	370
Dimensions		
Lift height	h3 (mm)	125
Height of tiller arm in operating position, min/ max	h14 (mm)	825/1190
Fork height, lowered	h13 (mm)	85
Overall length	l1 (mm)	1748
Length to face of forks	l2 (mm)	598
Overall width	b1 (mm)	710
Fork dimensions	mm	55x170x1150
Outside fork width	b5 (mm)	540
Ground clearance	m2 (mm)	35
Aisle width, 1000x1200 pallet crossways	Ast (mm)	2400
Aisle width, 800x1200 pallet lengthways	Ast (mm)	2300
Outer turning radius	Wa (mm)	1638
Performance		
Travel speed, with load/ without load	km/ h	5/5.5
Lifting speed, with load/ without load	m/ s	0.051/0.060
Lowering speed, with load/ without load	m/ s	0.052/0.059
Maximum gradeability, with load/ without load S2 5 min	%	16/8
Service brake		Electromagnetic
Drive		
Drive motor rating S2 60 min	kW	1.1
Lift motor rating at S 3 15%	kW	0.84
Battery voltage/ rated capacity (5h)	V/Ah	24/210
Battery weight (with box)	kg	205
Battery compartment dimensions l/ w/ h	mm	650/540/200
Battery type		Industry battery
Other		
Type of drive control		AC
Manufacturer		ZAPI
Sound level at operator's ear	dB (A)	74





Fast (8,5 km/h)



Compact design



210 Ampere industry battery

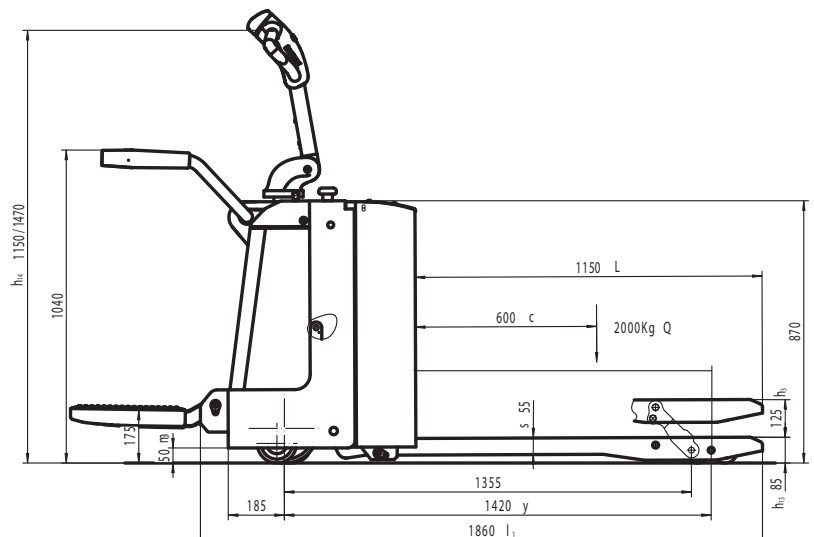
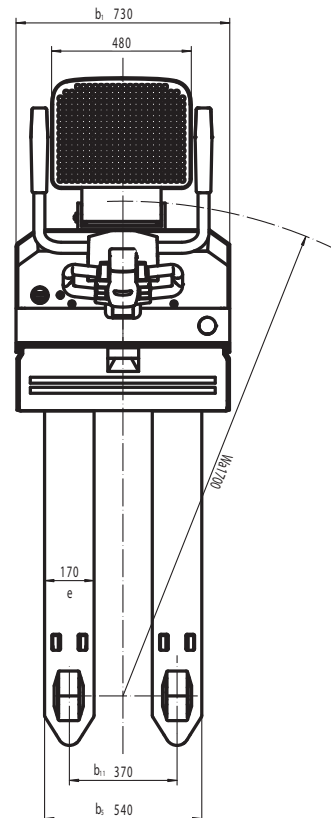
Smooth & Strong

Silverstone T20-20RA is a stand-on pallet mover for quick movements of goods. Latest generation AC motor technology ensures good performance and high security.

Regenerative brakes provides good performance and reduces wear-out. High quality components to achieve the best operating economy, e.g. Bucher lifting motor. A travel speed of 8.5 km / h provides efficient and fast transportation. 210 Ah battery enables T20-20WA to operate a full working day. Even more powerful batteries are available if needed.

Technical Info

Characteristics		
Model designation		T20-20RA
Drive unit		Battery
Operator type		Rider stand
Load capacity	Q (kg)	2000
Load center	c (mm)	600
Load distance	mm	916/982
Wheelbase	y (mm)	1420
Weights		
Service weight (Incl. battery)	kg	670
Axle loading with load operator/load side	kg	1066/1604
Axle loading without load, operator/load side	kg	546/124
Wheels, Chassi		
Tyre type		PU/PU
Tyre size, operator side	mm	Ø230x75
Tyre size, load side	mm	2 x Ø85x70
Balance wheels (dimensions)	mm	Ø130x60
Wheels, number operator/load side (x=drive wheels)		1x+2/2 or 4
C/C, operator side	mm	510
C/C, load side	b11 (mm)	370
Dimensions		
Lift height	h3 (mm)	125
Height of tiller arm in operating position, min/ max	h14 (mm)	1150/1470
Fork height, lowered	h13 (mm)	85
Overall length	l1 (mm)	1860
Length to face of forks	l2 (mm)	710
Overall width	b1 (mm)	730
Fork dimensions	s/ e/ l (mm)	55x170x1150
Outside fork width	b5 (mm)	540
Ground clearance	m2 (mm)	35
Aisle width, 1000x1200 pallet crossways	Ast (mm)	2034
Aisle width, 800x1200 pallet lengthways	Ast (mm)	2084
Outer turning radius	Wa (mm)	1700
Performance		
Travel speed, with load/ without load	km/ h	7.5/8.5
Lifting speed, with load/ without load	m/ s	0.056/0.060
Lowering speed, with load/ without load	m/ s	0.057/0.057
Maximum gradeability, with load/ without load S2 5 min	%	16/8
Service brake		Electromagnetic
Drive		
Drive motor rating S2 60 min	kW	1.5
Lift motor rating at S 3 15%	kW	2.2
Battery voltage/ rated capacity (5h)	V/Ah	24/210
Battery weight (with box)	kg	190
Battery compartment dimensions l/ w/ h	mm	-
Battery type		Industry Battery
Other		
Type of drive control		AC
Manufacturer		ZAPI
Sound level at operator's ear	dB (A)	74



Lifting height up to 3300 mm



Curtis control system



*Built in charger and
maintance free batteries*

Safe & Comfortable Stacking

Compact and smooth

Silverstone ES10-series are three compact electric stackers suitable for light material handling in several places such as shops, warehouses, small industries and such. Ergonomic controls, maintenance free batteries and built in charger makes them all very easy to operate and do maintenance on.

Economical and cost effective

It is not only the purchase price that is attractive on the new Silverstone ES10-series for light material handling. These stackers are all built with well proven components which are easily accessible. This ensures minimal maintenance costs. Forks moves quick up and down, which combined with good walking speed, increases productivity.

Safe

Raising and lowering features are easily accessible on the well-designed steering head. This allows the driver to fully concentrate on the load and stacking movements. The control handle is positioned in a way that provides better visibility for both driving and stacking.

A long tiller arm with low attachment point provides good safe distance between operator and machine, also it increases maneuverability.

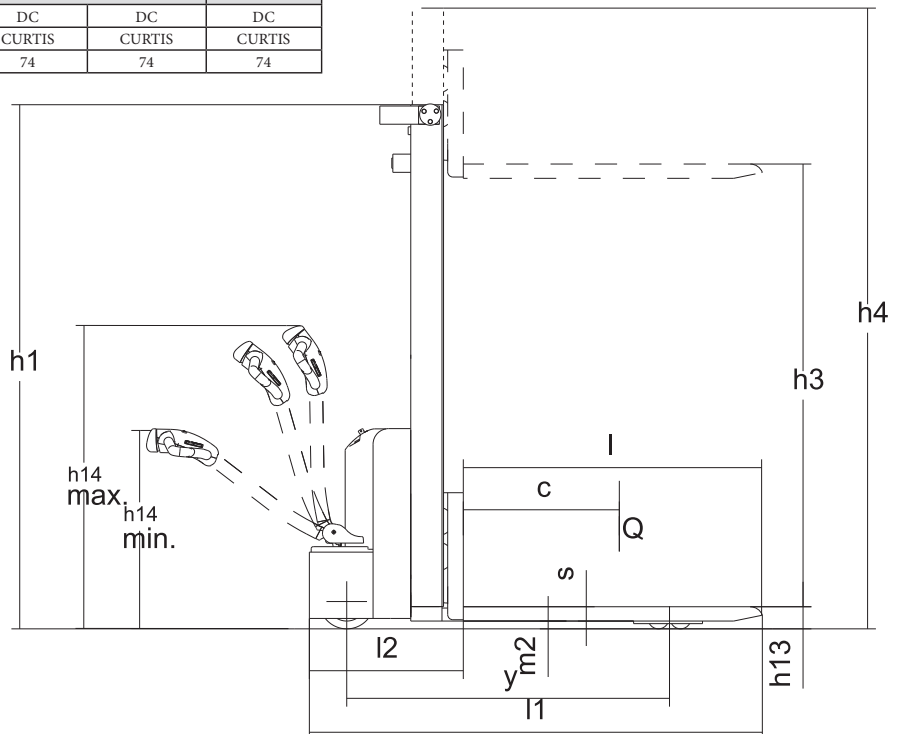
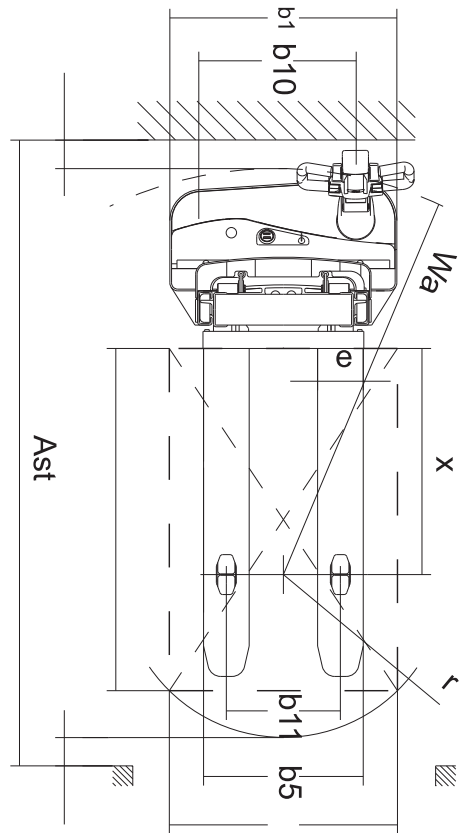
Light weighter

Silverstone ES10-series stackers are compact, slick and light weighted. This allows both running and stacking in places where it might not otherwise possible, such as entresols, narrow aisle or some floors that cannot withstand the burden of a large stacker.



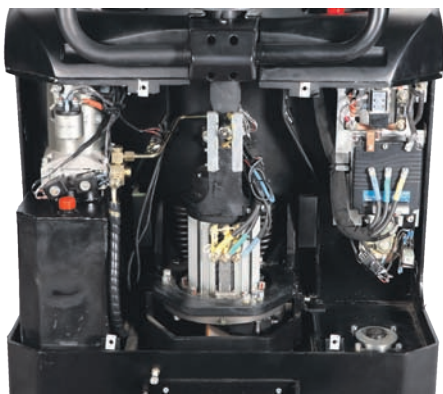
Technical Info

Characteristics				
Model designation		ES10-1600	ES10-2700	ES10-3300
Drive unit		Battery	Battery	Battery
Operator type		Pedestrian	Pedestrian	Pedestrian
Load capacity	Q (kg)	1000	1000	1000
Load center	c (mm)	600	600	600
Load distance	x (mm)	805	795	795
Wheelbase	y (mm)	1126	1240	1240
Weights				
Service weight (Incl. battery)	kg	475	461	461
Axle loading with load, operator/load side	kg	655/820	645/816	645/816
Axle loading without load, operator/load side	kg	362/113	350/111	350/111
Wheels, Chassis				
Tyre type		PU/PU	PU/PU	PU/PU
Tyre size, operator side	mm	Ø 210x70	Ø 210x70	Ø 210x70
Tyre size, load side	mm	Ø 80x60	Ø 80x60	Ø 80x60
Balance wheels (dimensions)	mm	Ø 130x55	Ø 130x55	Ø 130x55
Wheels, number operator/load side (x=drive wheels)		1x+2/4	1x+ 1/ 4	1x+ 1/ 4
C/C, operator side	b10 (mm)	533	533	533
C/C, load side	b11 (mm)	380	400	400
Dimensions				
Height, mast lowered	h1 (mm)	1940	1900	2200
Free lift	h2 (mm)	1590	-	-
Lift height	h3 (mm)	1600	2700	3300
Height, mast extended	h4 (mm)	1955	3180	3780
Height of tiller arm in operating position, min/ max	h14 (mm)	860/1200	860/ 1200	860/ 1200
Fork height, lowered	h13 (mm)	85	85	85
Overall length	l1 (mm)	1615	1740	1740
Length to face of forks	l2 (mm)	465	590	590
Overall width	b1 (mm)	800	800	800
Fork dimensions	s/ e/ l (mm)	60/170/1150	55/ 160/ 1150	55/ 160/ 1150
Outside fork width	b5 (mm)	550	560	560
Ground clearance	m2 (mm)	30	30	30
Aisle width, 1000x1200 pallet crossways	Ast (mm)	2137	2225	2225
Aisle width, 800x1200 pallet lengthways	Ast (mm)	2062	2150	2150
Outer turning radius	Wa (mm)	1295	1408	1408
Performance				
Travel speed, with load/ without load	km/ h	3,5/4	3,5/4	3,5/4
Lifting speed, with load/ without load	m/ s	0.12/0.22	0.12/ 0.22	0.12/ 0.22
Lowering speed, with load/ without load	m/ s	0.12/0.11	0.12/ 0.11	0.12/ 0.11
Maximum gradeability, with load/ without load S2 5 min	%	10/3	3/10	3/10
Service brake		Electromagnetic	Electromagnetic	Electromagnetic
Drive				
Drive motor rating S2 60 min	kW	0.65	0.65	0.65
Lift motor rating at S 3 15%	kW	2.2	2.2	2.2
Battery voltage/ rated capacity (5h)	V/Ah	2x12/80	2x12/105	2x12/105
Battery weight (with box)	kg	2x20	2x30	2x30
Battery compartment dimensions l/ w/ h	mm	260/172/215	305/ 165/ 210	305/ 165/ 210
Battery type		Gel Battery	Gel Battery	Gel Battery
Other				
Type of drive control		DC	DC	DC
Manufacturer		CURTIS	CURTIS	CURTIS
Sound level at operator's ear	dB (A)	74	74	74





Lifting height up to 5 m



*Proven components and ZAPI
electronic control system*



Easy battery replacement

Cost Effective with the Latest Technology

Extraordinary Total Economy

Silverstone stackers with ride-on platform are equipped with the latest technology in terms of engine, steering and brakes. A well proven system of AC motors and ZAPI control electronics provide top-class performances. This combined with an attractive purchase / lease / rent price and long service intervals ensures an incredibly good total economy.

Performance to gain high productivity

Maximum speed of 8.5 km/h for fast driving. The lifting and lowering function has good performance. Overall this means no unnecessary loss of time.

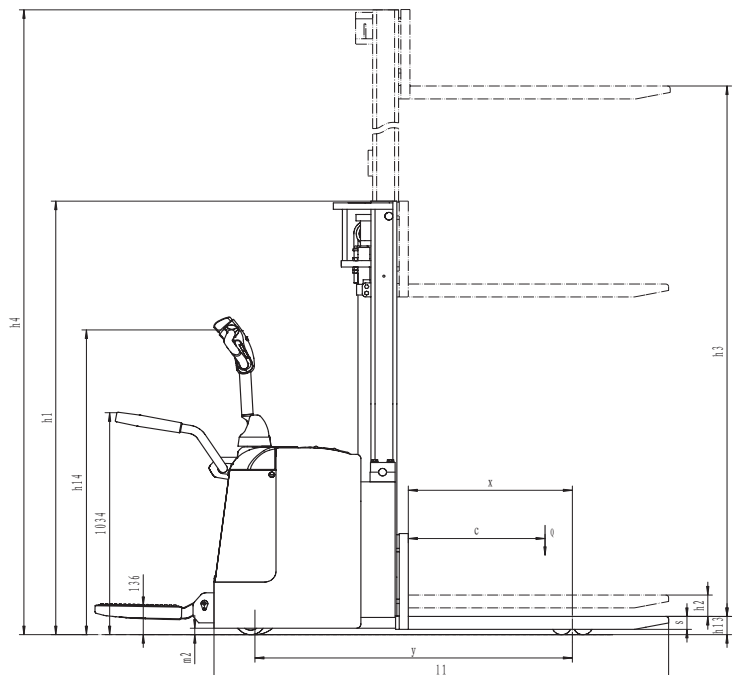
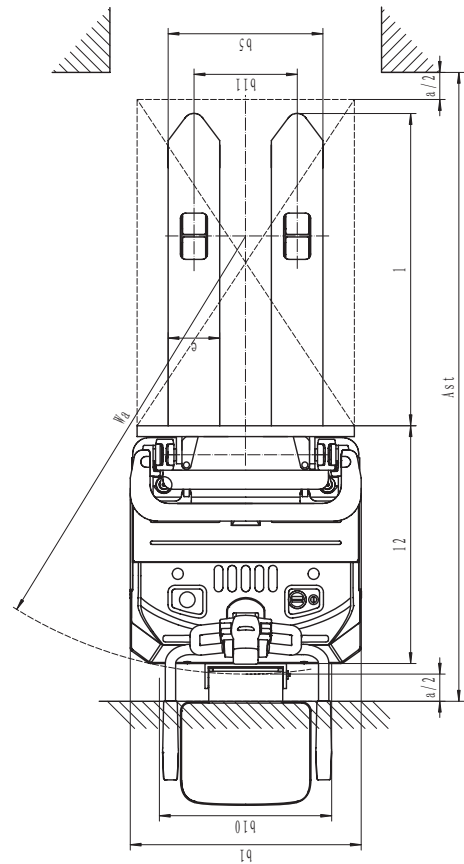
Safety in focus

In addition to the right placed and ergonomic controls Silverstone full electric stackers are all equipped with many safety features. Among others, automatic speed reduction when forks are lifted over 500 mm, safety stop, regenerative brakes, roll-back stop which provide safety at work on slopes, side protection for the operator, good visibility through the mast.



Technical Info

Characteristics			
Model designation		ES14-3300	ES16-5000
Drive unit		Battery	Battery
Operator type		Rider stand	Rider stand
Load capacity	Q (kg)	1400	1600
Load center	c (mm)	600	600
Load distance	x (mm)	713	713
Wheelbase	y (mm)	1394	1394
Weights			
Service weight (Incl. battery)	kg	1330	1400
Axle loading with load, operator/load side	kg	800/1930	940/2060
Axle loading without load, operator/load side	kg	850/480	890/510
Wheels, Chassis			
Tyre type		PU/PU	PU/PU
Tyre size, operator side	mm	Ø230x75	Ø230x75
Tyre size, load side	mm	Ø85x70	Ø85x70
Balance wheels (dimensions)	mm	Ø130x60	Ø130x60
Wheels, number operator/load side (x=drive wheels)		1x+2/4	1x+2/4
C/C, operator side	b10 (mm)	634	634
C/C, load side	b11 (mm)	380	380
Dimensions			
Height, mast lowered	h1 (mm)	2187	2187
Free lift	h2 (mm)	100	1760
Lift height	h3 (mm)	3250	4990
Height, mast extended	h4 (mm)	3765	5545
Height of tiller arm in operating position, min/ max	h14 (mm)	1007/1412	1007/1412
Fork height, lowered	h13 (mm)	85	85
Overall length	l1 (mm)	2003/2525	2003/2525
Length to face of forks	l2 (mm)	860	860
Overall width	b1 (mm)	850	850
Fork dimensions	s/ e/ l (mm)	60/190/1150	60/190/1150
Outside fork width	b5 (mm)	570	570
Ground clearance	m2 (mm)	30	30
Aisle width, 1000x1200 pallet crossways	Ast (mm)	2521	2521
Aisle width, 800x1200 pallet lengthways	Ast (mm)	2454	2454
Outer turning radius	Wa (mm)	1613	1613
Performance			
Travel speed, with load/ without load	km/ h	7.5/8.5	7.5/8.5
Lifting speed, with load/ without load	m/ s	0.15/0.18	0.15/0.18
Lowering speed, with load/ without load	m/ s	0.20/0.15	0.20/0.15
Maximum gradeability, with load/ without load S2 5 min	%	8/16	8/16
Service brake		Electromagnetic	Electromagnetic
Drive			
Drive motor rating S2 60 min	kW	1.5	1.5
Lift motor rating at S3 15%	kW	3	3
Battery voltage/ rated capacity (5h)	V/Ah	24/230	24/280
Battery weight (with box)	kg	280	350
Battery compartment dimensions l/ w/ h	mm	815/222/630	815/222/630
Battery type		Industry battery	Industry battery
Other			
Type of drive control		AC	AC
Manufacturer		CURTIS	CURTIS
Sound level at operator's ear	dB (A)	74	74

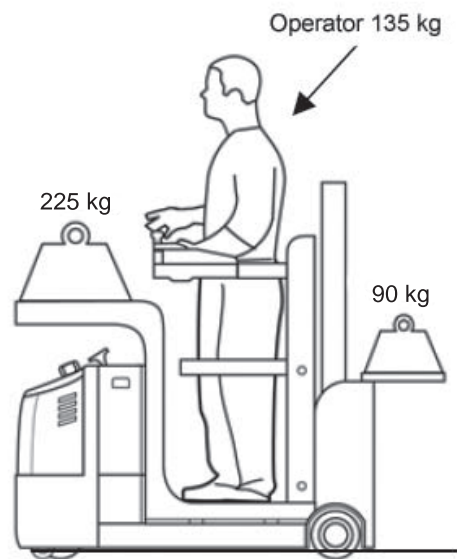




Left controls



Right controls



Operator 135 kg

225 kg

90 kg

Maximum capacity

Up in the Sky

Order picking

Silverstone CK-05 solves many of the high altitude problems and tasks that you may face when working in industry, warehouse and retail shops. Order picking up to 4,8 m is no problem.

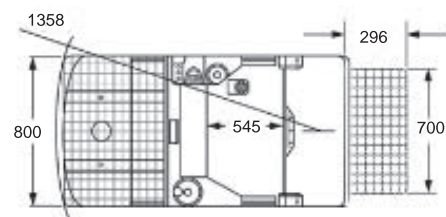
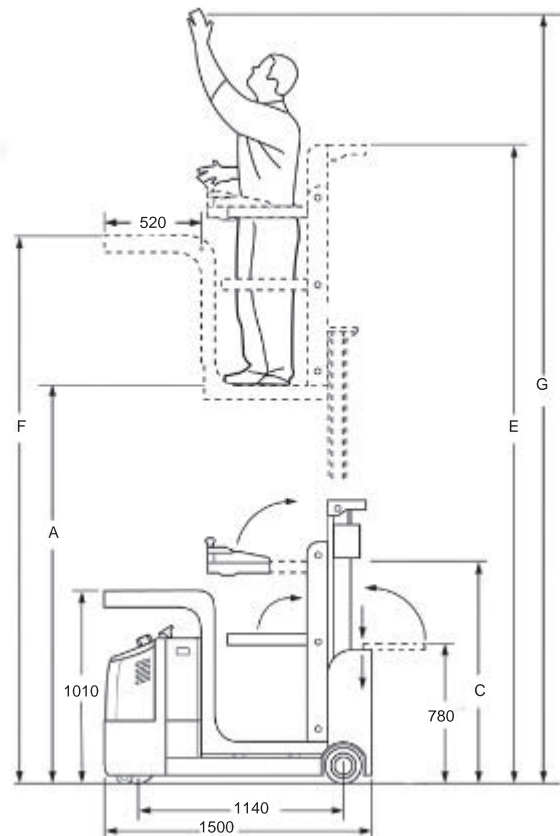
CK-05 is simple and easy to maneuver thanks to the electric steering and well-designed controls. CK-05 only need 1,8 meters aisle width to make a U-turn.

Maintenance work on high levels often means bulky and wobbly ladders in action and yet is stability and space limited. With Silverstone CK-05 you drive around smoothly and easily with space for both materials and tools on-board. Do you need to move around the properties while towing one or many carts? No problem, CK-05 solves this task with elegance and safe.

Silverstone CK-05 is equipped with non-marking polyurethane tires.

Technical Info

Characteristics		
Model designation		CK-05
Drive unit		Battery
Operator type		Rider stand
Load capacity	kg	450
Ground clearance	mm	50
Wheelbase	mm	1140
Weights		
Service weight	kg	960/1200 (excl./incl. battery)
Wheels, Chassi		
Tyre type		PU/PU
Tyre size, operator side	mm	Ø 230x75
Tyre size, load side	mm	Ø 204x76
Driving/loading wheel no		1/2
Dimensions		
Maximal lifting height, working platform	F (mm)	4000
Control height	mm	1010
Collapsed height	C (mm)	1950
Overall length	mm	1500
Overall width	mm	825
Load tray size (front)	mm	520/800
Load tray size (rear/foldable)	mm	296/700
Height load tray (rear)	mm	780
Height working platform (rear)	E (mm)	4550
Operators lower standing height	A (mm)	3200
Maximal working height	G (mm)	ca. 5000
Operator compartment size	mm	545/800
Turning radius	mm	1385
Performance		
Travel speed	km/ h	5.5
Lifting speed	m/ s	0.22
Lowering speed	m/ s	0.30
Maximum gradeability, with load/ without load	%	6/15
Service brake		Electromagnetic
Drive		
Drive motor rating	kW	1.5
Lift motor rating	kW	2.2
Battery voltage/ rated capacity	V/Ah	24/225
Battery type		Industry battery
Other		
Type of drive control		AC
Manufacturer		Zapi





Silverstone CK-05 facilitates a new economical thinking for smaller stocks.



Please find our complete assortment of material handling in our separate catalogue or on our website www.silverstone.se

Vilniaus g. 4a, Grigiškės,
LT-27101 Vilniaus m. sav.,
Lietuva
Tel. +370 5 2432146
Fax. +370 5 2432156
Mob tel. +370 682 31060
e-mail: dominga@dominga.lt

Elektrėnų g. 1S,
LT-51192 Kaunas,
Lietuva
Tel. +370 37 760276
Fax. +370 37 760275

Savanorių pr. 187- B,
LT-02300 Vilnius,
Lietuva
Tel.: +370 5 2322231
Fax: + 370 5 2648229
e-mail: info@dominga.lt

Žemaitės g. 137,
LT-76139 Šiauliai,
Lietuva
Tel. +370 41 452518
Fax. +370 41 452445



Silverstone AB, Gjuterigatan 10, 341 31 Ljungby, Sweden. Tel +46 372-694 30. Fax +46 372-136 71.
info@silverstone.se, www.silverstone.se

We reserve the right for eventual printing and picture errors, as well as the right for changes without prior notice.