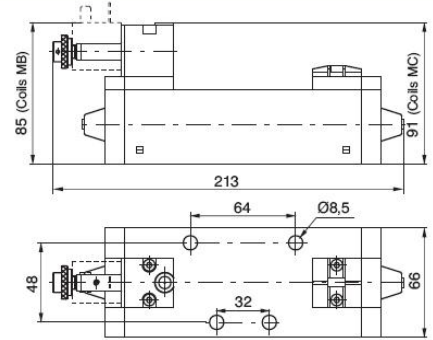


Pneumatic - Spring - 5/2

Ordering code	
1013.52.3.9.M	
M	MECHANICAL CODE
	See Valves Series 300 CNOMO



Weight gr. 1060
Minimum operating pressure 2,5 bar

Operational characteristic	Fluid	Max working pressure (bar)	Temperature °C	Flow rate at 6 bar with $\Delta p=1$ (l/min)
		Filtered and lubricated air	10	-5 - +50