

C60-80

IC-PNEUMATIC LPG/DIESEL

6,000 / 7,000 / 7,500 / 8,000 kg at 600mm L/C
13,500 / 15,500 / 16,500 / 18,000 lbs. at 24" L/C

GEN 2



CLARK[®]
THE FORKLIFT



- Two foot steps with **traction plates** quickly and safely make entry/exit easy... from either side.

- The spacious **operator compartment** includes an easy to read colour display. Real time information including error codes for the transmission and engine are shown in the LCD display.



Highly Maneuverable, Easily Serviceable, Broadly Flexible, Extremely Dependable

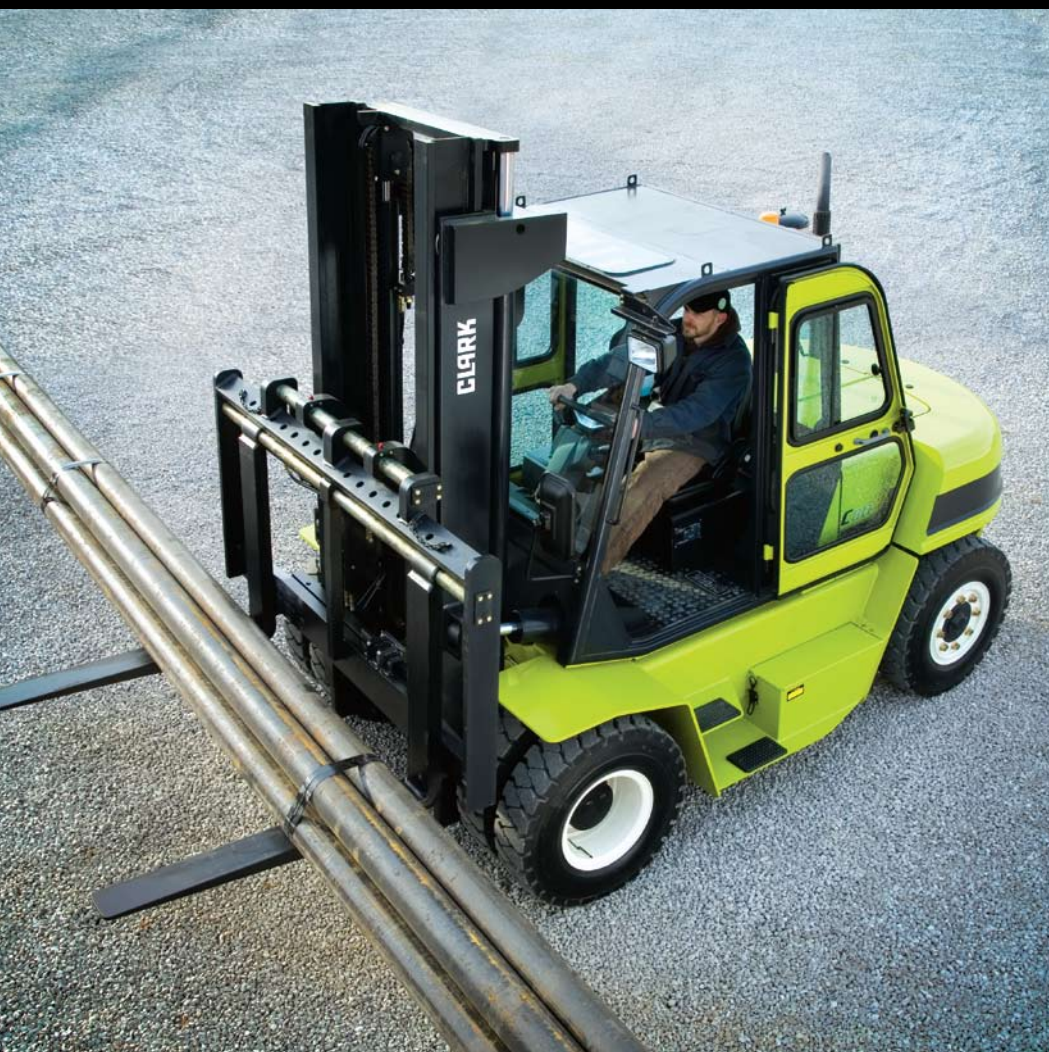
With the combination of a 67 kw diesel engine, fully automatic 3-speed transmission, wet disc brakes and rugged chassis design, the GEN2 C60-80 provides the **exceptional performance, maneuverability and durability** in its class that you've come to expect from CLARK.

8 metric tons

With a **capacity** of up to 8,000 kg. the CLARK C60/70/75/80 is all the truck you will ever need.

- Nested Upright Rails, Overhead Guard Safety Bars (running parallel to operator's line of sight) and **dual primary cylinders with no center cylinder** expand the vision window and **reduce product damage**.

Maximum Visibility + Minimum Fatigue =
Ultimate Safety & Maximum Productivity



C60-80 STANDARD FEATURES & BENEFITS



PARKING BRAKE

- **Simple & Error Proof**
 - Hand operated parking brake activates brakes.
 - Transmission disengages when parking brake is set preventing driving against park brake.

WET DISC BRAKES ON ALL C60-80 MODELS

- **Enclosed & Oil Cooled**
 - For smooth, quiet operation.
 - Reduced maintenance.
- **Power Assist Design**
 - Low pedal effort reduces operator fatigue.
- **No Adjustments**
 - Longer Service Intervals mean less downtime.



THE POWER BEHIND THE PUNCH

- **4.5 L Turbo Charged 67 kw Iveco Diesel Engine**
 - Provides exceptional output, torque & fuel economy.
 - Cold Start System, Vertical Exhaust and Pre-Cleaner come standard.
 - Increased horsepower for better acceleration.
- **Field-Proven 4.3 L V-6 GM LPG Engine**
 - Built for smooth & quiet operation.
- **Auto Shut-Down**
 - Protects your investment in the event of excessive engine coolant, high transmission oil temperature or low engine oil pressure.
- **CE Compliant**
 - Engines meet reduced emission and smoke levels.

Optional Equipment

- | | |
|---------------------------------|--------------------------------|
| • Wide range of upright options | • Full comfort operator cab |
| • Double auxiliary valve | • Air conditioner |
| • Double hose adaptation | • Solid pneumatic tires |
| • Integral sideshifters | • Horizontal exhaust on Diesel |
| • Integral fork positioners | • Quick-Couplings |
| • Fork options | • Varius seat option |
| • Strobe lights | |



"BUILT TO LAST" CHASSIS

- Heavy duty, welded, integral box frame assembly.
- Integral hydraulic & fuel tanks.
- Wrap-around side frame members for rigidity.
- Integral battery & tool box compartments.



OPTIONAL OPERATOR CAB

- **Maximum Visibility**
 - Unique overhead guard design maximizes the visibility without obstruction of door pillars.
- **180° Fold & Lock Doors**
 - Door recesses within truck frame when locked open.



RUGGED UPRIGHT AND CARRIAGE

- **Maximum Visibility**
 - Lift cylinders, chains & hoses are all mounted within the rail profile.
- **Hydraulic Cushioning Valves**
 - Silent staging reduces shock & vibration.
- **Shimmable, Sealed & Canted Load Rollers**
 - Carriage has 8 rail rollers & 4 side thrust rollers.
 - Maximize load distribution & reduce free play.



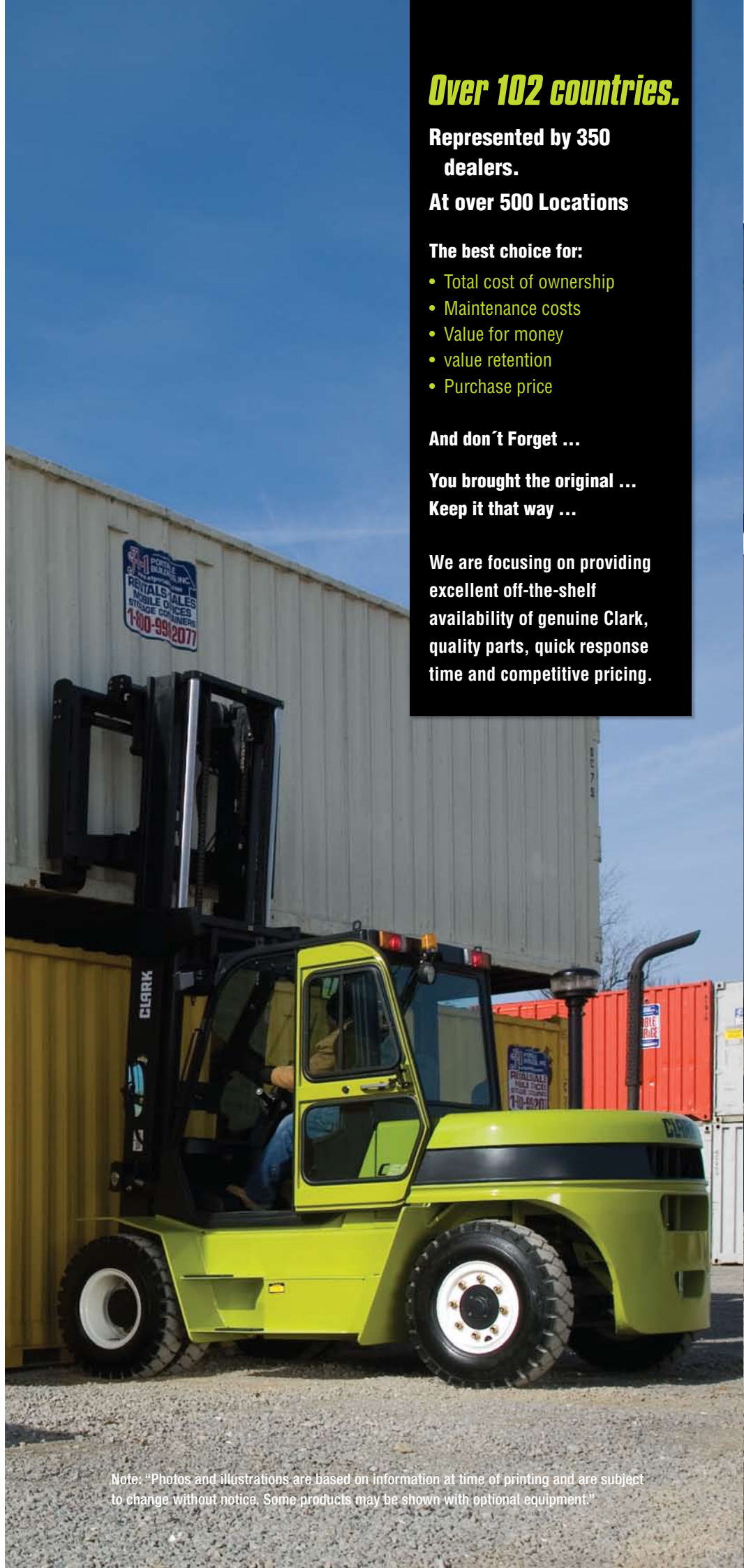
"SMART SHIFT" TRANSMISSION

- **Fully Automatic**
 - 3-Speed Powershift Transmission is standard on LPG & Diesel models.
 - Operator friendly, automatic upshifting and downshifting.
- **Modulated Shift Protection**
 - Smooth engagement, cushioned shifting.
- **Electrically Controlled**
 - No adjustments required.
- **Heavy Duty**
 - Robust components for longer life.
- **Inching Valve**
 - With Left Brake Pedal operation allows for precisely controlled travel speeds during high speed lifting.



OPERATOR COMPARTMENT

- **Fully Adjustable, Full Suspension Seat**
 - 6 cm Vertical Travel • 20° Backrest Adjustment Range
 - 15 cm fore / aft adjustment • Molded for support
 - Retractable Seat Belt
- **Thick Molded Floor Mat**
 - Reduces vibration and noise level.
 - Improves operator comfort.
- **Protected Lights**
 - Headlights, Brake & Taillights and Turn Signals are mounted high to prevent damage.
- **Tilt Steering Column**
 - Adjusts to suit operator & easier entry/exit.
- **Hood Mounted Hydraulic Controls**
 - Located and sized for ease of use.



Over 102 countries.

**Represented by 350
dealers.**

At over 500 Locations

The best choice for:

- Total cost of ownership
- Maintenance costs
- Value for money
- value retention
- Purchase price

And don't Forget ...

**You brought the original ...
Keep it that way ...**

**We are focusing on providing
excellent off-the-shelf
availability of genuine Clark,
quality parts, quick response
time and competitive pricing.**

Note: "Photos and illustrations are based on information at time of printing and are subject to change without notice. Some products may be shown with optional equipment."

- We don't just build forklifts. As a company, we are also focused on providing our customers with the best possible technical service support and aftermarket parts available.
- Even though our business starts with a quality, cost effective product, our organization understands that it is the support and service that help keep your business running at peak efficiency.
- **THE CLARK PartsPRO® SYSTEM** is our industry-leading electronic parts and service documentation tool that provides dealers with a quick and accurate method of identifying parts for every CLARK forklift build since 1961. Parts Pro® ensures the availability of the most current technical information and has the unique capability to create parts manuals specific to your mixed CLARK fleet, making it simple to positively identify and order the correct part(s) from your local CLARK dealer. The right CLARK part - The First Time, Every Time.



DEPENDABLE PARTS = DEPENDABLE TRUCKS



BUILT TO LAST.®



CLARK EUROPE GMBH

Neckarstraße 37 · D-45478 Mülheim an der Ruhr

Tel: +49 (0)208-37 73 36-0 · Fax: +49 (0)208-37 73 36-36

Info-europe@clarkmheu.com · www.clarkmheu.com

GEN2 C60/70/75/80

Dealer

Vilniaus g. 4a, Grigiškės,
LT-27101

Vilniaus m. sav., Lietuva

Tel. +370 5 2432146,

faksas +370 5 2432156

Mob. +370 686 61091

El. paštas: info@dominga.lt